

Future electron-positron colliders and the 4-dimensional composite Higgs model

D. Barducci,^a S. De Curtis,^b S. Moretti^{a,c} and G.M. Pruna^d

^a*School of Physics and Astronomy, University of Southampton,
Southampton SO17 1BJ, U.K.*

^b*INFN, Sezione di Firenze, Via G. Sansone 1,
50019 Sesto Fiorentino, Italy*

^c*Particle Physics Department, Rutherford Appleton Laboratory,
Chilton, Didcot, Oxon OX11 0QX, U.K.*

^d*Paul Scherrer Institute,
CH-5232 Villigen PSI, Switzerland*

E-mail: d.barducci@soton.ac.uk, decurtis@fi.infn.it,
s.moretti@soton.ac.uk, giovanni-marco.pruna@psi.ch

ABSTRACT: In this note we analyse the prospects of a future electron-positron collider in testing a particular realisation of a composite Higgs model encompassing partial compositeness, namely, the 4-Dimensional Composite Higgs Model. We study the main Higgs production channels for three possible energy stages and different luminosity options of such a machine and confront our results to the expected experimental accuracies in the various Higgs decay channels accessible herein and, for comparison, also at the Large Hadron Collider.

KEYWORDS: Beyond Standard Model, Technicolor and Composite Models

ARXIV EPRINT: [1311.3305](https://arxiv.org/abs/1311.3305)

Contents

1	Introduction	1
2	Model	2
3	Results	4
3.1	Decoupling limit in the 4DCHM	6
3.2	Away from the decoupling limit in the 4DCHM	10
3.2.1	Higgs couplings analysis at the LHC	10
3.2.2	Higgs couplings analysis at e^+e^- colliders in HS and VBF	11
3.2.3	The top Yukawa coupling from $e^+e^- \rightarrow t\bar{t}H$	12
3.2.4	The triple Higgs self-coupling	15
4	Conclusions	16

1 Introduction

The long time effort of the physics community to understand the origin of mass has now produced an outstanding result, as the discovery at the Large Hadron Collider (LHC) of a Higgs boson with a mass of roughly 125 GeV has finally been confirmed by both the ATLAS [1] and CMS [2] collaborations. While this is an extraordinary outcome of the CERN machine operations, one of the primary questions that we need to ask now is whether this particle corresponds to the Higgs boson embedded in the Standard Model (SM) or else belongs to some Beyond the SM (BSM) scenario.

In fact the SM suffers from a key theoretical drawback, the so-called “hierarchy” problem, pointing out that the it could be a low energy effective theory valid only up to some cut-off energy Λ . The latter can well be at the TeV scale, hence in an energy range accessible at the LHC, so that new physics could be discovered at the CERN machine in the coming years.

For this reason many BSM scenarios, which could be revealed at the TeV scale, were proposed in the last decades, the most popular being Supersymmetry (SUSY) that solves the instability of the Higgs mass under radiative corrections by predicting new particle states in the spectrum, differing from the SM ones by half unit of spin, i.e., by postulating a symmetry between fermions and bosons [3, 4]. The behaviour of the new SUSY particles with respect to the SM ones is such that the Higgs mass becomes stable to all orders in perturbation theory (see, e.g., [5] and references therein).

Another intriguing possibility is that the Higgs particle may be a composite state arising from some strongly interacting dynamics at a high scale instead of being an elementary state. This will solve radically the hierarchy problem owing to compositeness form factors

taming the otherwise divergent growth of the Higgs mass upon quantum effects. Furthermore, the now measured light mass of this potentially composite Higgs state is consistent with the fact that the latter could arise as a Pseudo Nambu-Goldstone Boson (PNGB) from a particular coset of a global symmetry breaking [6–9].

Models with a composite Higgs state arising as a PNGB generally predict modifications of its couplings to both bosons and fermions of the SM [10], hence the measurement of these quantities represents a powerful way to test the possible non-fundamental nature of the newly discovered state. Furthermore, the presence of additional particles in the spectrum of such composite Higgs models leads to both mixing effects with the SM states as well as new Feynman diagram topologies both of which would represent a further source of deviations from the SM expectations.

The advantages of an electron-positron collider with respect to a hadron collider, e.g., the cleanliness of the environment, the precision of the measurements and the large number of Higgs bosons produced, make an analysis of the prospect of these types of machine in disentangling the fundamental from the composite nature of the Higgs boson of primary importance in view of a future decision of the physics community regarding the new generation of accelerators.

For this reason, in this note we will be analysing the generic potential of the proposed e^+e^- colliders in testing a particular realisation of a composite Higgs model, the so-called 4-Dimensional Composite Higgs Model (4DCHM) of ref. [11]. We will therefore borrow energy and luminosity configurations from machines prototypes such as the International Linear Collider (ILC), the Compact Linear Collider (CLIC) and the Triple Large Electron-Positron (TLEP) collider.

The plan of the paper is as follows. In the next section we describe the features of the model we have chosen. Section 3 illustrates our analysis and presents our results. Section 4 summarises our findings.

2 Model

In this section we briefly introduce the salient features of the 4DCHM, that is, the specific realisation of the composite Higgs model with partial compositeness [12] that we have chosen for our analysis.

The 4DCHM is an effective low-energy Lagrangian approximation that represents an extremely deconstructed version of the Minimal Composite Higgs Model (MCHM) described in [13]. It is based on the $SO(5)/SO(4)$ coset that gives four PNGBs, one of which being the physical Higgs state. The explicit breaking of the $SO(4)$ global symmetry via linear mixing between the SM and new fields give rise to a radiative Higgs potential *à la* Coleman-Weinberg [14] and hence to a mechanism of dynamical Electro-Weak Symmetry Breaking (EWSB). The particular choice of the fermionic sector of the 4DCHM makes the Higgs potential Ultra-Violet (UV) finite at one loop and, remarkably, for a natural choice of the model parameters, it has the correct form to provide EWSB [11] and a Higgs boson mass compatible with the experimental value of the new state discovered at the LHC.

The extra $\text{SO}(5) \otimes \text{U}(1)_X$ gauge group present in the model implies 11 new vectorial degrees of freedom among which 5 are neutral and $3 + 3$ are charged gauge bosons, collectively called Z' and W' , respectively. The choice of the four fundamental representations of $\text{SO}(5) \otimes \text{U}(1)_X$ (called $\Psi_{T,B}$ and $\tilde{\Psi}_{T,B}$) that build up the fermionic sector gives 20 new fermions, 16 with standard electric charge, $+2/3$ and $-1/3$, denoted collectively as t' and b' , respectively, and 4 with exotic charges, $+5/3$ and $-4/3$, denoted collectively as \tilde{t}' and \tilde{b}' , respectively. In our notation, the new particles present in the 4DCHM in addition to the SM ones are¹ then the following:

- Neutral gauge bosons: Z_i (with $i = 1, \dots, 5$)
- Charged gauge bosons: W_i^\pm (with $i = 1, \dots, 3$)
- Charged $+2/3$ fermions: t_i (with $i = 1, \dots, 8$)
- Charged $-1/3$ fermions: b_i (with $i = 1, \dots, 8$)
- Charged $+5/3$ fermions: \tilde{t}'_i (with $i = 1, 2$)
- Charged $-4/3$ fermions: \tilde{b}'_i (with $i = 1, 2$)

Together with the SM matter and gauge fields and neglecting the $\text{SU}(3)_C$ part that is left untouched with respect to the SM (besides the fact that also the new spin 1/2 resonances carries colour charge and so the corresponding QCD terms ought to be added) the 4DCHM is described by the following Lagrangian

$$\begin{aligned}
 \mathcal{L} &= \mathcal{L}_{\text{gauge}} + \mathcal{L}_{\text{ferm}}, \\
 \mathcal{L}_{\text{gauge}} &= \frac{f_1^2}{4} \text{Tr} |D_\mu \Omega_1|^2 + \frac{f_2^2}{2} (D_\mu \Phi)(D_\mu \Phi)^T - \frac{1}{4} \rho_{\mu\nu}^{\tilde{A}} \rho^{\tilde{A}\mu\nu} - \frac{1}{4} F_{\mu\nu}^{\tilde{W}} F^{\tilde{W}\mu\nu}, \\
 \mathcal{L}_{\text{ferm}} &= \mathcal{L}_{\text{ferm}}^{el} + (\Delta_{t_L} \bar{q}_L^{el} \Omega_1 \Psi_T + \Delta_{t_R} \bar{t}_R^{el} \Omega_1 \Psi_{\tilde{T}} + h.c.) \\
 &\quad + \bar{\Psi}_T (i\hat{D}^{\tilde{A}} - m_*) \Psi_T + \bar{\Psi}_{\tilde{T}} (i\hat{D}^{\tilde{A}} - m_*) \Psi_{\tilde{T}} \\
 &\quad - (Y_T \bar{\Psi}_{T,L} \Phi^T \Phi \Psi_{\tilde{T},R} + M_{Y_T} \bar{\Psi}_{T,L} \Psi_{\tilde{T},R} + h.c.) \\
 &\quad + (T \rightarrow B).
 \end{aligned} \tag{2.1}$$

In $\mathcal{L}_{\text{gauge}}$ the covariant derivatives with respect to the SM \tilde{W} fields and the extra \tilde{A} fields, with coupling g_0 and g_ρ , are given by

$$\begin{aligned}
 D^\mu \Omega_1 &= \partial^\mu \Omega_1 - ig_0 \tilde{W}^\mu \Omega_1 + ig_\rho \Omega_1 \tilde{A}^\mu, \\
 D_\mu \Phi &= \partial_\mu \Phi - ig_\rho \tilde{A}_\mu \Phi.
 \end{aligned} \tag{2.2}$$

The link fields Ω_n in the unitary gauge are given by

$$\Omega_n = \mathbf{1} + i \frac{s_n}{h} \Pi + \frac{c_n - 1}{h^2} \Pi^2, \quad s_n = \sin(fh/f_n^2), \quad c_n = \cos(fh/f_n^2), \quad h = \sqrt{\tilde{h}^{\hat{a}} \tilde{h}^{\hat{a}}}, \tag{2.3}$$

¹An increasing number labelling the 4DCHM bosonic and fermionic states corresponds to their increasing masses.

where $\Pi = \sqrt{2}h^{\hat{a}}T^{\hat{a}}$ is the PNCB matrix and the $T^{\hat{a}}$'s are the SO(5)/SO(4) broken generators, with $\hat{a} = 1, 2, 3, 4$.

The field Φ is a vector of SO(5) that describes the spontaneous symmetry breaking of $\text{SO}(5) \otimes \text{U}(1)_X \rightarrow \text{SO}(4) \otimes \text{U}(1)_X$ and is defined as

$$\Phi = \phi_0 \Omega_2^T \quad \text{where} \quad \phi_0^i = \delta^{i5}. \quad (2.4)$$

The f_i 's are the link coupling constants and f the strong sector scale (or 'compositeness' scale), which are related through

$$\sum_{n=1}^2 \frac{1}{f_n^2} = \frac{1}{f^2} \quad (2.5)$$

and the choice $f_1 = f_2 = \sqrt{2} f$ has then been made.

The fermionic Lagrangian $\mathcal{L}_{\text{ferm}}$ contains kinetic terms, mass (m_*) and interaction ($Y_{T,B}, m_{Y_{T,B}}$) parameters between the extra fermions and also mixing parameters ($\Delta_{t,b/L,R}$) between the extra matter and the SM content. $\mathcal{L}_{\text{ferm}}^{\text{el}}$ describes the kinetic terms of the SM fermions.

3 Results

Being our goal the study of this particular composite Higgs framework in its completeness and its detailed analysis with its full particle spectrum included, we have chosen to implement the 4DCHM into numerical tools that allow one to perform dedicated analyses up to event generation. Our simulations have been mainly performed with the help of the CalcHEP package [15] in which the model under discussion had been previously implemented via the LanHEP tool [16], as already illustrated in some detail in refs. [17, 18]. Moreover, since CalcHEP only allows by default the analysis of only tree-level processes, we have also added by hand the one-loop Hgg , $H\gamma\gamma$ and $H\gamma Z$ vertices (again computed with the full model particle spectrum inside them).

A feature specific to future e^+e^- colliders is the presence of Initial State Radiation (ISR) and Beamstrahlung. For the former, CalcHEP implements the Jadach, Skrzypek and Ward expressions of refs. [19, 20]. Regarding the latter, we adopted the parametrisation specified for the ILC project in [21], that is²,

- beam size ($x + y$): 645.7 nm,
- bunch length: 300 μm ,
- bunch population: $2 \cdot 10^{10}$.

We will be considering throughout three values for the Centre-of-Mass (CM) energy, which are standard benchmark energies for a future e^+e^- collider: 250 GeV, 500 GeV and

²While fine details of the emerging electron and positron spectra may be different in other parametrisations (see [22] for CLIC and [23] for TLEP), we can confirm that the gross features of the ensuing 4DCHM phenomenology are generically captured by the present one.

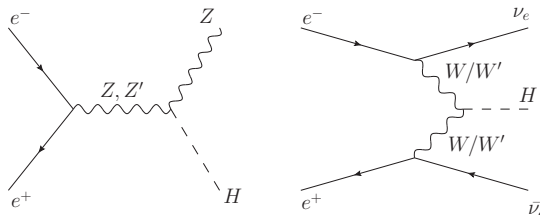


Figure 1. Representative Feynman diagrams for the HS (left) and VBF (right) single Higgs production processes at an electron-positron collider. Extra gauge bosons, Z' and W' , can also be exchanged.

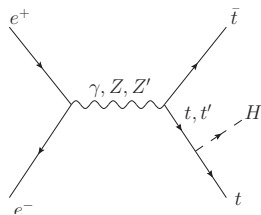


Figure 2. Representative Feynman diagrams for single Higgs production in association with $t\bar{t}$ pairs at an electron-positron collider. Extra gauge bosons, Z' , and/or top partners, t' , can also be exchanged.

1 TeV. Within the 4DCHM, we have studied the phenomenology of a Higgs boson obtained via the standard production mechanisms of lepton colliders: i.e., Higgs-Strahlung (HS) from neutral vector bosons and Vector Boson Fusion (VBF) (the latter primarily onset by an off-shell charged vector boson pairs), as per Feynman diagram shown in figure 1. Furthermore, we have focused the analysis on two other Higgs processes, which are the specialities of future electron-positron machines: i.e., Higgs production in association with top-antitop quark pairs (see figure 2) and double Higgs production, considering both the case of a second Higgs boson emitted in the HS channel, $e^+e^- \rightarrow ZHH$, and the one via VBF, $e^+e^- \rightarrow \nu_e\bar{\nu}_eHH$ (see figure 3). When combining production cross sections and decay Branching Ratios (BRs), our simulated data have been always related to the experimental accuracies presented in refs. [24–26]. There and here, we will indicate the production cross section with $\sigma(ZH)$ for HS, $\sigma(WW)$ for VBF, $\sigma(ttH)$ for Higgs production in association with $t\bar{t}$ pairs, $\sigma(ZHH)$ for double HS and $\sigma(\nu\bar{\nu}HH)$ for double Higgs production via VBF. In keeping with the aforementioned references, we have always assumed a luminosity of $250/500/1000 \text{ fb}^{-1}$ in correspondence to an energy of 250/500/1000 GeV.

In the following (sub)sections we will present several results concerning the studies of the aforementioned Higgs production processes organised as follows. Initially we will confirm the results that in the so-called “decoupling limit” (whereby, essentially, the additional gauge bosons and fermions present in the 4DCHM particle spectrum are made sufficiently heavy) sizable deviations from the SM couplings of the discovered Higgs object are possible and may indicate indirect evidence of a composite Higgs sector. However, we will eventually also argue that such decoupling does not really onset yet for values of

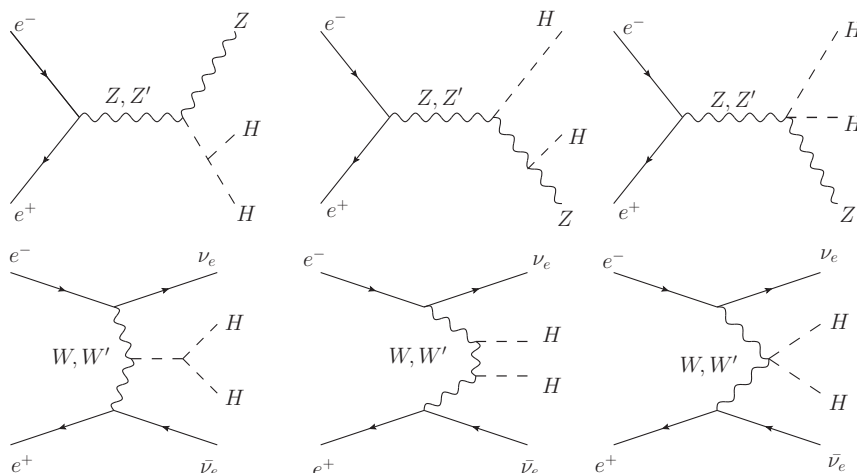


Figure 3. Representative Feynman diagrams for double Higgs production via HS (top) and via VBF (bottom) at an electron-positron collider. Extra gauge bosons, W' and Z' , can also be exchanged.

the new particle masses pertaining to the 4DCHM which are still compatible with current experimental data: i.e., following the LHC measurement of the light Higgs boson mass and the constraints from the Electro-Weak Precision Tests (EWPTs) from LEP, SLC and Tevatron,³ primarily impinging on the fermionic and gauge sector of the 4DCHM respectively, as well as the negative results from Tevatron and LHC direct searches for new gauge bosons and fermions. That is, we will show that genuine 4DCHM effects cannot be relegated to a simple rescaling of the relevant Higgs couplings, as the presence of W' , Z' and/or t' propagator effects in all the production processes analysed cannot generally be neglected. This will in fact be shown to be a relevant effect for HS Higgs production and production in association with $t\bar{t}$ pairs, albeit less so for single Higgs production via VBF and both double Higgs production channels, via HS and via VBF, the latter two being also limited in a phenomenological analysis by the poor experimental accuracies which are expected.

In essence, to generalise our findings, quantitative studies of Higgs boson phenomenology in composite Higgs models at future electron-positron colliders cannot ignore effects from realistic mass spectra. Conversely, studies in the decoupling scenario remain valid so long that such mass spectra are made significantly heavy.

3.1 Decoupling limit in the 4DCHM

In recent years, a popular approach introduced by [29] (for a more recent review, see also [30, 31]) in order to parametrise effects of generic New Physics (NP), has been adapted to the

³In particular, the naive tree-level contribution of the new spin-1 particles to the S parameter leads to a lower bound on their mass around 3 TeV. However, new positive contributions to the T parameter can relax this constraint down to 2 TeV [27, 28].

study of Higgs couplings (see, e.g., [32–34]) in generic decoupling scenarios. The rationale is as follows. It is commonly accepted that any effects arising from NP (at some scale $\Lambda_{\text{NP}} \gg \Lambda_{\text{EW}}$) can be embedded in the SM via 6-dimensional effective operators (thereby assuming that the new physical fields are integrated away), realising the aforementioned decoupling limit, so long that the probing energy is around the EW scale. Then, after a specific theory is chosen, the coefficients of such effective operators can be expressed in terms of coupling modifications of the SM interactions.

Now, focusing onto the 4DCHM as an illustrative example of composite Higgs scenarios with additionally heavy matter and gauge fields, the modifications of the Higgs couplings arise via three effects:

1. the non-linear realisation of the Goldstone symmetry;
2. the mixing between SM and extra particles due to the partial compositeness mechanism;
3. the possibility that, in both tree-level and loop-induced processes, exchange of new particles can occur.

In the aforementioned effective approach, the first two effects are normally captured while the latter is not whenever the masses of the additional states are close to Λ_{NP} , as it is naturally the case. In fact, sometimes, in current literature, even the second effect is not accounted for, so that one achieves a true decoupling of all NP, i.e., all the non-SM particle effects in the model spectrum are neglected, and the analysis consists in the trivial rescaling of the Higgs couplings due to its Goldstone nature. In particular, defining $\xi = v^2/f^2$ and assuming the case of the 4DCHM (i.e., a $\text{SO}(5)/\text{SO}(4)$ coset with extra fermions in fundamental representations of $\text{SO}(5)$), this rescaling values, for vector bosons $V = W/Z$ and SM fermions f , are [10]

$$\frac{g_{HVV}^{\text{SM}}}{g_{HVV}^{\text{4DCHM}}} = \sqrt{1 - \xi}, \quad \frac{g_{Hff}^{\text{SM}}}{g_{Hff}^{\text{4DCHM}}} = \frac{1 - 2\xi}{\sqrt{1 - \xi}}. \quad (3.1)$$

In such a regime of decoupling we can also compute the values of the so-called Higgs signal strengths, defined as

$$\mu_i = \frac{\sigma(e^+e^- \rightarrow HX)_{\text{4DCHM}} \text{BR}(H \rightarrow i)_{\text{4DCHM}}}{\sigma(e^+e^- \rightarrow HX)_{\text{SM}} \text{BR}(H \rightarrow i)_{\text{SM}}}, \quad (3.2)$$

where X represents anything produced in association with the Higgs boson (e.g., Z in the case of HS and $\nu_e \bar{\nu}_e$ or e^+e^- in the case of VBF) and i simply labels a possible final state of the Higgs boson decay (for example $b\bar{b}$, $\gamma\gamma$, WW , ZZ), and relate a measurement of the various μ_i 's to the model parameter f .

An example of this is found in figure 4, limited for illustration purposes to the case of the HS process, which indeed shows that there exists sensitivity at future e^+e^- machines to the compositeness scale f . Further exercises can be performed along similar lines and various such statements can be finally made for a variety of production modes and decay channels as recently done, e.g., in ref. [28].

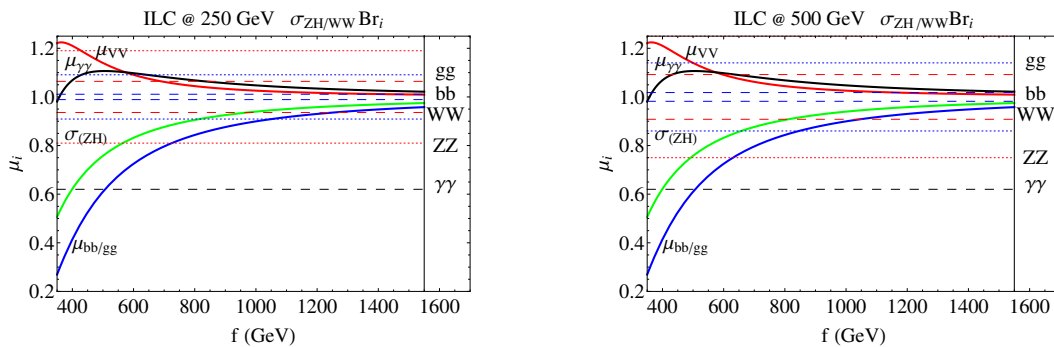


Figure 4. Higgs signal strengths μ_i for $i = VV(= WW/ZZ)$ (red), $\gamma\gamma$ (black) and $b\bar{b}/gg$ (blue) as a function of the model scale f . In green is given the ratio of the inclusive $\sigma(ZH)$ cross section with respect to the SM value. Horizontal lines represent the expected experimental accuracies for cross section times BR measurements at the 250 GeV (left) and 500 GeV (right) stage of a future e^+e^- collider, according to refs. [24, 26]: WW (red dashed), ZZ (red dotted), $\gamma\gamma$ (black dashed), $b\bar{b}$ (blue dashed) and gg (blue dotted).

However, in the light of our previous discussion, a legitimate question arises: does the decoupling limit represent a good approximation for interpreting the phenomenological implication of the 4DCHM? The answer is “generally not”. In the following, we will set out to prove this by studying the impact of the 4DCHM particle spectrum onto the main Higgs production and decay channels for customary values of the NP scale.

We have started by performing a parameter scan⁴ for various benchmark points of our model. We have found that the largest deviations from the SM expectations arise, naturally, for the lowest possible values of $M_{Z'}, M_{W'} \approx fg_\rho$ and, correspondingly, for the lowest choices of the compositeness scale f . We have considered f in the TeV range and fixed the g_ρ parameter in order to have $M_{Z'}, M_{W'} \approx 2$ TeV, which indeed represents an allowed configuration from both EWPTs (see, e.g., figure 1 of [28]) and direct Z', W' searches (see ref. [36]). Furthermore, notice that keeping the mass of the extra neutral vector resonance fixed renders clearer the dependence of the observable onto the compositeness scale f .

In order to separate (factorisable) rescaling effects, due to both the non-linear realisation of the Goldstone symmetry and the mixing between SM and extra particles, from the ones due to the additional propagators, we have introduced the R and Δ parameters for the inclusive HS production cross section as follows:

$$R = \frac{\sigma(ZH)_{4DCHM}}{\sigma(ZH)_{SM}}, \quad \Delta = R - \kappa_{HZZ}^2, \quad \kappa_{HZZ} = \frac{g_{HZZ}^{4DCHM}}{g_{HZZ}^{SM}}. \quad (3.3)$$

Then, by numerical computation, we have proven that, if the new class of neutral gauge bosons are completely stripped off the calculations, R tends to κ_{HZZ}^2 (equivalently, Δ tends

⁴For the details of the latter, including the ranges adopted in modelling the parameter space as well as the experimental constraints implemented, see refs. [17, 18]. However, as an update on those scans, we have here excluded from our analysis points in which the mass of the SM quark partners $t', b', \tilde{t}', \tilde{b}'$ is lighter than 600 GeV, this to take into account limits on the direct search of heavy quarks coming from the LHC experiments, see for example [35].

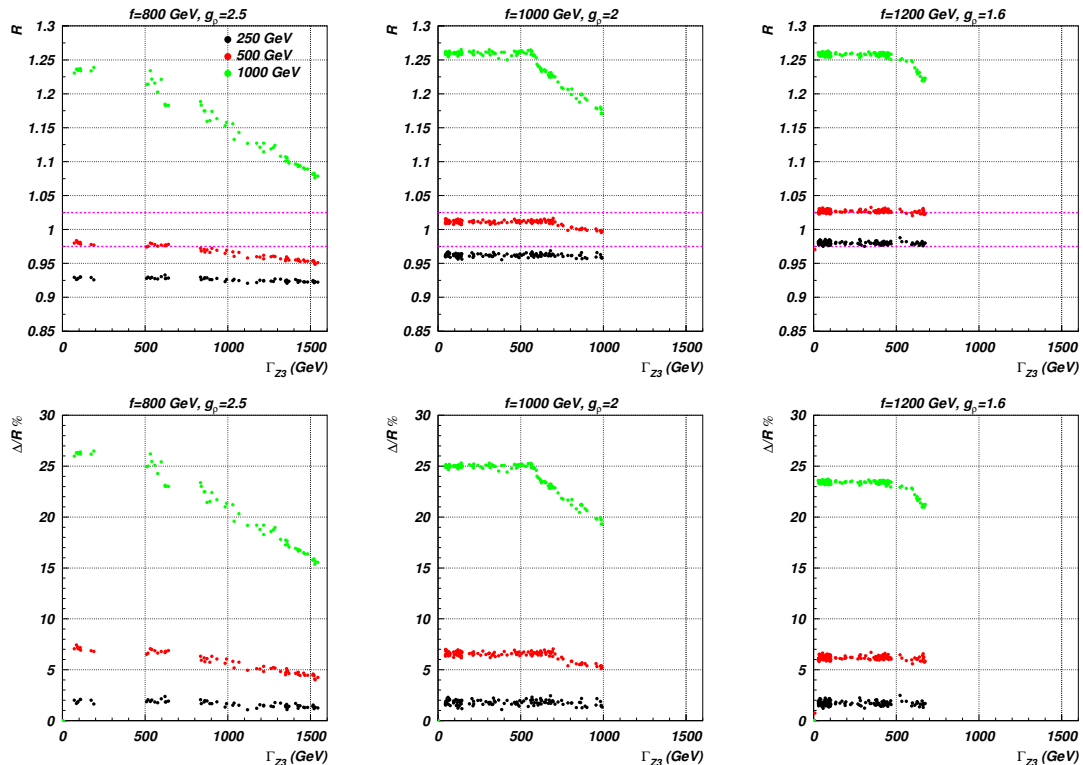


Figure 5. The R and Δ quantities defined in eq. (3.3) plotted against the width of the Z_3 resonance for the benchmark points with $f = 800$ GeV and $g_\rho = 2.5$ (left), $f = 1000$ GeV and $g_\rho = 2$ (centre), $f = 1200$ GeV and $g_\rho = 1.6$ (right). The dotted purple line represents the experimental precision in determining R , according to refs. [24, 26].

to 0) with a negligible deviation $\sim 0.01\%$ due to a slight shift in the C_V and C_A couplings of the SM-like Z to the fermions (herein, e^+e^-), due to the aforementioned mixing. Since HS is generically the most useful process from which deviations of the Higgs couplings from the SM values can be extracted, we are essentially making the generic statement that, even when the CM energy of the collider is below the scale of NP, f in this case, where the additional boson and fermion masses of the 4DCHM naturally tend to cluster, the HS cross section is always affected by propagator effects (see also [37] and [38] for studies in the context of the Littlest Higgs and Minimal Composite Higgs models, respectively). This is well illustrated by figure 5, where we quantify the R and Δ parameters for three of our benchmark choices ($f = 800$ GeV, $f = 1000$ GeV and $f = 1200$ GeV, corresponding to a value of the ξ parameter of 0.1, 0.06 and 0.04, respectively) as a function of the total width of the dominant⁵ extra-vectorial contribution, i.e., Γ_{Z_3} , for the three customary values of CM energy. The rescaling factors are $\kappa_{HZZ}^2 \approx 0.91$ for $f = 800$ GeV, $\kappa_{HZZ}^2 \approx 0.94$ for $f = 1000$ GeV and $\kappa_{HZZ}^2 \approx 0.96$ for $f = 1200$ GeV. The slopes present in the plots, more

⁵We explicitly verified that all the features of the Z_2 and Z_3 contributions are the same, with the exception of the couplings involved: the Z_3 one to leptons is about twice the Z_2 one to the same particles. Z_1 and Z_4 do not couple to leptons and are thus irrelevant in this process. Z_5 is always much heavier.

noticeable the larger the CM energy, make it clear that one is in presence of width dependent propagator effects. In fact, the trend of R (or equivalently Δ) is almost constant but, from some threshold on, it decreases with Γ_{Z_3} (somewhat linearly) reflecting the nature of the interference contribution that is proportional to $1/\Gamma_{Z_3}$ when the CM energy is smaller than the Z_3 masses involved (modulus some dilution induced by the Z_2 state, which is however responsible for the interference in the region where Γ_{Z_3} is small).

The deviations from the SM limit span from $\sim 2\%$ when $\sqrt{s} = 250$ GeV up to $\sim 25\%$ when $\sqrt{s} = 1$ TeV. We have also verified that the effect is completely due to the constructive interference term arising from the SM-like Z resonance and the $Z_2 + Z_3$ contributions, with Z_3 being dominant among the two extra vectors, as already mentioned. A feature of such interference effect is that the R values are always above the expected “reduction” onset in the decoupling limit, to the point that, at $\sqrt{s} = 1$ TeV for the three benchmarks and even at $\sqrt{s} = 500$ GeV for $f = 1000$ GeV and $f = 1200$ GeV, the R value is above 1, which is never expected if the new resonances are totally decoupled.

We have then verified that choosing a bigger $M_{Z'}, M_{W'}$ will render the effects of the extra gauge bosons smaller until one reaches the limit in which they are completely decoupled from the theory, thereby recovering the results of [28] although, for example, even for $M_{Z'} = 3$ TeV, the effects due to the aforementioned interference are still present and lead to deviations up to $\sim 10\%$ with respect to the scaling of the couplings, when $\sqrt{s} = 1$ TeV.

As a conclusion then, we believe that a complete study of composite Higgs models via the HS process should also take into account the possibility of non-decoupled spectra for the extra resonances (in the context of composite Higgs scenarios the effects of resonances, although in different processes, has already been analysed in [39]).

For completeness, we have also analysed the case of VBF, where we have established that such interference effect is taking place but with inverted sign and with a contribution that is one order of magnitude lower than in the HS case. The largest effect is again seen at $\sqrt{s} = 1$ TeV, yielding a destructive interference of $\sim 2 - 3\%$.

3.2 Away from the decoupling limit in the 4DCHM

3.2.1 Higgs couplings analysis at the LHC

As a first step we consider the LHC capability to disentangle the 4DCHM from the SM by means of the measurement of the signal strengths μ_i 's by comparing our predictions against the LHC experimental accuracies that can be found in refs. [24, 26]. In particular, we plot in figure 6 two cases in which our parameter scans predict values of the signal strengths that lie outside the foreseen LHC experimental errors, that are reported for completeness in table 1.⁶ All the other predictions for the 4DCHM are inaccessible in terms of signal strength at the 14 TeV LHC with 300 fb^{-1} of integrated luminosity and this reason, together with the ones already mentioned in the introduction, legitimate our analysis of the chosen model at a different machine, such as a future electron-positron collider.

⁶The quoted sensitivities come from [24–26] where an analysis of ATLAS and CMS projections has been made allowing for an individual analysis of each Higgs production channel.

ggH	14 TeV	ttH	14 TeV
ZZ	0.08	$b\bar{b}$	0.25
$\gamma\gamma$	0.06	$\gamma\gamma$	0.42

Table 1. Expected accuracies for cross section times BR measurements for a 125 GeV Higgs boson produced via gg fusion (left frame) and in associated production with $t\bar{t}$ (right frame) as given in refs. [24, 26] at the LHC with 14 TeV and 300fb^{-1} of luminosity.

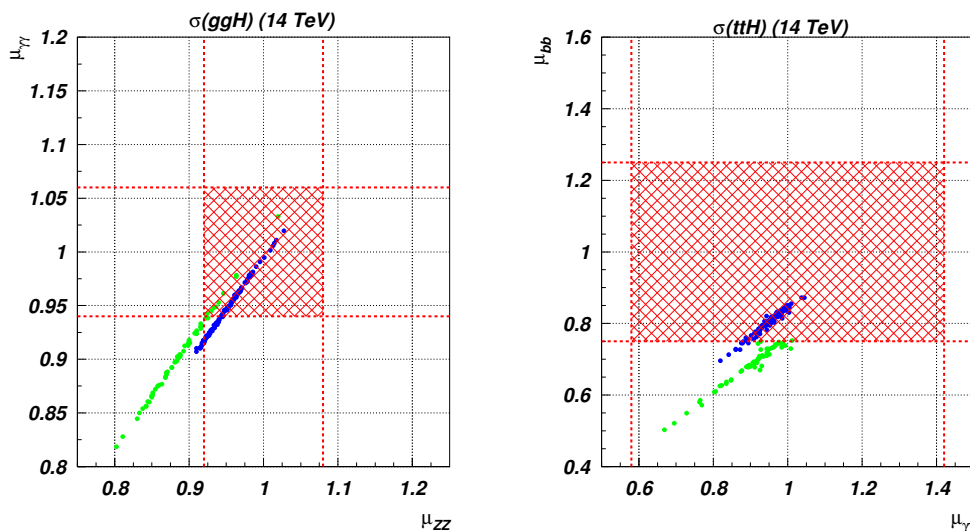


Figure 6. Correlations among relevant μ_i s evaluated at the LHC with 14 TeV and 300fb^{-1} of luminosity, in gg fusion (left frame) and associated production with $t\bar{t}$ (right frame). Plots are for two 4DCHM benchmarks, with $f = 800\text{ GeV}$ and $g_\rho = 2.5$ (green points) and $f = 1000\text{ GeV}$ and $g_\rho = 2$ (blue points). The red shadowed areas represent the experimental precision limits around the SM expectations according to table 1.

3.2.2 Higgs couplings analysis at e^+e^- colliders in HS and VBF

We have shown in section 3.1 that the exchange of sufficiently light new particles in the tree-level diagrams can affect Higgs production cross sections due to interference effects between SM and 4DCHM diagrams, so that the low energy approach cannot be sufficiently accurate in the processes that concern our analysis. Furthermore, as already intimated, extra modifications to the various observables can also arise because of the presence of non-decoupled extra gauge bosons that give extra modifications (via mixing) to the couplings involved in the HS and VBF processes. These coupling alterations can affect both the Higgs-vector-vector and vector-fermion-fermion couplings. Lastly, loop-induced couplings, such as $H\gamma Z$, $H\gamma\gamma$ and/or Hgg , could also be affected by the presence of new fermions and, for the former, bosons running in the corresponding loop diagrams. All these effects can therefore modify the signal strengths in a way that may be detectable with the experimental accuracies expected at future electron-positron colliders.

Motivated by this additional reason, we present our results in terms of scatter plots for two of the three benchmarks already used in section 3.1: $f = 800\text{ GeV}$, $g_\rho = 2.5$ and

HS	250 GeV	500 GeV	VBF	250 GeV	500 GeV	1000 GeV
$\sigma(ZH)$	0.025		$b\bar{b}$	0.105	0.0066	0.0047
$b\bar{b}$	0.011	0.018	WW		0.026	0.033
WW	0.064	0.092	ZZ		0.082	0.044
ZZ	0.19	0.25	$\gamma\gamma$		0.26	0.10
$\gamma\gamma$	0.38	0.38	gg		0.041	0.031
gg	0.091	0.14				

Table 2. Expected accuracies for cross section times BR measurements for a 125 GeV Higgs boson produced via HS (left frame) and VBF (right frame) as given in refs. [24, 26] at a future e^+e^- collider for various energy and luminosity stages, as detailed in the text.

$f = 1000$ GeV, $g_\rho = 2$. We show the results of these scans in figures 7 and 8 for HS and VBF production, respectively. From figure 7 we notice that the deviations in the HS mode from the case in which the full particle spectrum is not taken into account, represented by the stars, could modify the signal strengths for various channels. In some cases these deviations are fully disentangleable while in others they are not, depending on where the scan points fall relative to the SM expectations and according to the corresponding experimental error bars for a particular signature. In the case of VBF, see figure 8, the effects are still present although smaller due to the different topologies of the Feynman diagrams. Altogether, though, it is clear the potential that future leptonic machines can offer in pinning down the possible composite nature of the 125 GeV scalar boson discovered at CERN by measuring its ‘effective’ couplings to essentially all SM matter and forces.

3.2.3 The top Yukawa coupling from $e^+e^- \rightarrow t\bar{t}H$

At the running energy stages of 500 and 1000 GeV one of the most important process to be analysed at a future e^+e^- collider is $e^+e^- \rightarrow t\bar{t}H$.⁷ In this channel, beside the effects already seen in the HS channel due to the exchange of s -channel extra gauge bosons, mainly Z_2 and Z_3 , there could also occur the exchange of t 's that, if light enough and/or produced resonantly, could affect this production process significantly. In fact, in general composite Higgs models these particles are predicted to be relatively light, around the TeV scale (so as to avoid a large fine tuning: see, e.g., [40] for a review on this) which is precisely the region that is starting to be tested by the LHC experiments. As already mentioned, in order to naively take into account the direct search limits of extra coloured quarks coming from the LHC, we have restricted our parameter scans by only allowing for masses of these states greater than 600 GeV. This does not intend to be a precise and accurate exclusion, which is beyond the scope of this work, rather an indication of what a realistic mass bound on these states (which depends non-trivially on different BRs, interference effects and other subtleties) could be, an approach that is indeed sufficient for the purposes our analysis.

Following again the guidance provided by refs. [24, 26], we quote in table 3 the expected accuracies, in correspondence to the chosen energies of a future e^+e^- collider, of the $b\bar{b}$ signal strength (the most easily accessible one) and we show the results of our scans in

⁷Note that the contribution of the Higgs-strahlung diagrams is negligible at the energies considered with respect to those depicted in figure 2, see [26].

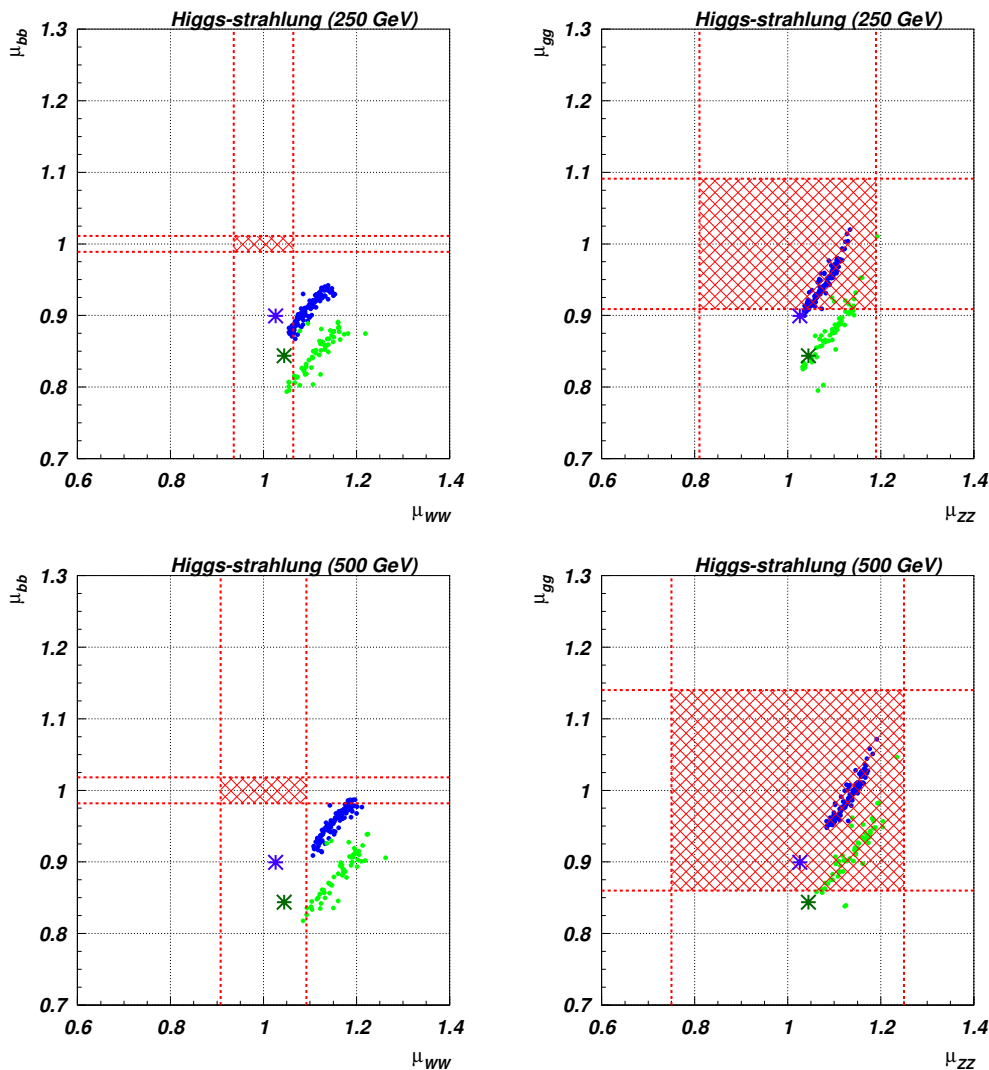


Figure 7. Correlations among relevant μ_{is} evaluated at a future e^+e^- collider for two energy and luminosity stages, as detailed in the text, in the HS process. Plots are for two 4DCHM benchmarks, with $f = 800$ GeV and $g_\rho = 2.5$ (green points) and $f = 1000$ GeV $g_\rho = 2$ (blue points). The red shadowed areas represent the precision limits around the SM expectations according to table 2. The asterisks represent the values obtained in the decoupling limit, whereby only the first effect of those mentioned in section IIIA is accounted for.

figure 9. We present the results for the two benchmark points already used in the previous subsection in one case with the inclusion of t' fermions while in the other we do so by excluding these extra states from the Higgs production process. From the comparison of the two panels of figure 9 it is clear that the enhancement of the signal strength up to a value of 2.5 (or more) relative to the decoupling limit result at $\sqrt{s} = 1$ TeV is due to the exchange of t' states with a mass smaller than $\sqrt{s} - m_t$ that can indeed be resonant in the subsequent production of a Higgs-top pair in the final state. In contrast, at 500 GeV, the more moderate (yet still detectable) departure of the $\mu_{b\bar{b}}$ value from the the decoupling

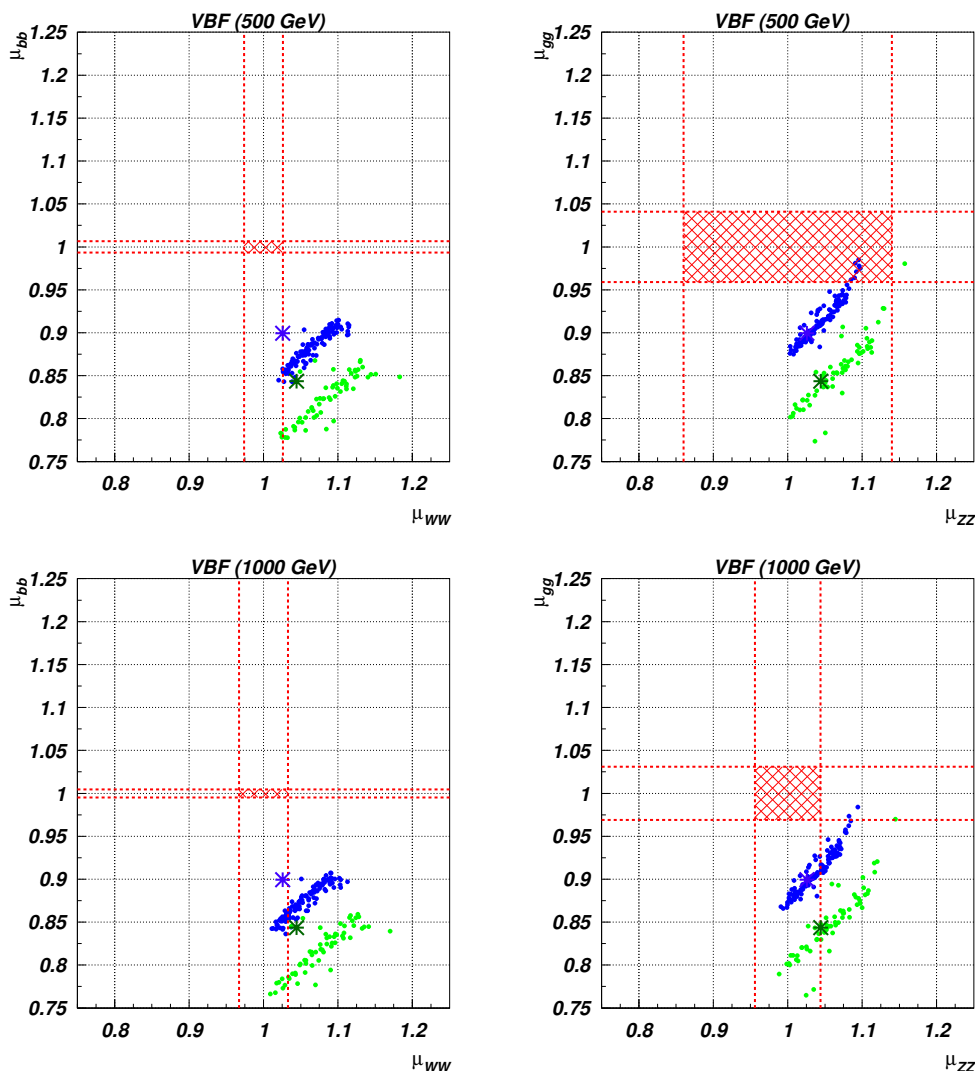


Figure 8. Correlations among relevant μ_i s evaluated at a future e^+e^- collider for two energy and luminosity stages, as detailed in the text, in the VBF process. Plots are for two 4DCHM benchmarks, with $f = 800$ GeV and $g_\rho = 2.5$ (green points) and $f = 1000$ GeV $g_\rho = 2$ (blue points). The red shadowed areas represent the precision limits around the SM expectations according to table 2. The asterisks represent the values obtained in the decoupling limit, whereby only the first effect of those mentioned in section IIIA is accounted for.

limit is due to non-resonant Z' and t' effects (from off-shell propagators and/or mixing), as at this energy (owing to the aforementioned 600 GeV mass limit) no t' mass can at the same time be larger than $m_t + m_H$ and smaller than $\sqrt{s} - m_t$.⁸ Once again, the potential of a future e^+e^- machine in accessing the 4DCHM and also assessing its finite mass effects is very significant also via this process.

⁸Notice that, for $\sqrt{s} = 500$ or 1000 GeV, $t't'$ production for $m_{t'} \geq 600$ GeV is not possible, so that single t' production followed by $t' \rightarrow tH$ could be a discovery process of the heavy fermions or else an independent confirmation of a possible LHC signal of the latter.

ttH	500 GeV	1000 GeV
$b\bar{b}$	0.35	0.087

Table 3. Expected accuracies for cross section times BR measurements for a 125 GeV Higgs boson produced via associated production with $t\bar{t}$ as given in refs. [24, 26] at a future e^+e^- collider for two energy and luminosity stages, as detailed in the text. Only the $b\bar{b}$ decay mode is considered.

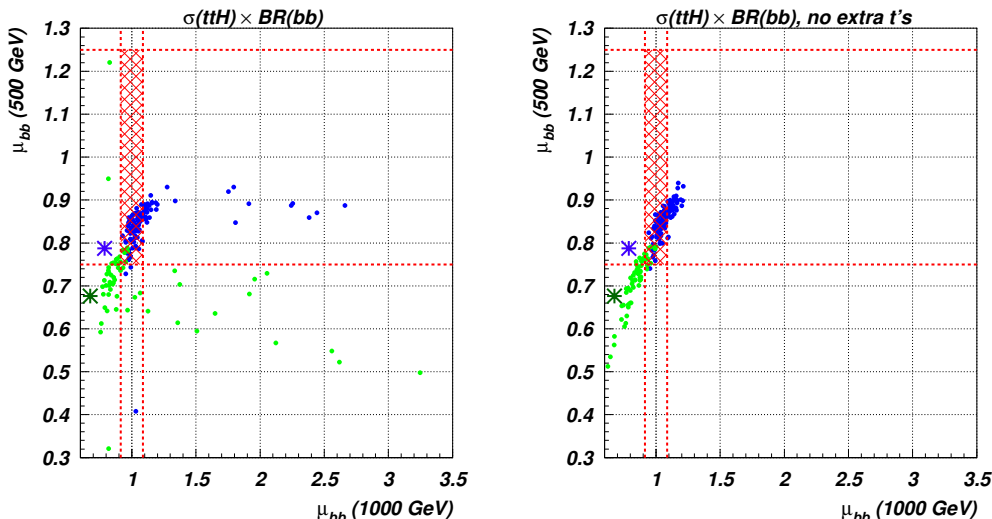


Figure 9. Correlations among μ_{bb} s evaluated at a future e^+e^- collider for two energy and luminosity stages, as detailed in the text, in the associated production with $t\bar{t}$, with the inclusion of t' quarks (left frame) and without these (right frame). Plots are for two 4DCHM benchmarks, with $f = 800$ GeV and $g_\rho = 2.5$ (green points) and $f = 1000$ GeV $g_\rho = 2$ (blue points). The red shadowed areas represent the precision limits around the SM expectations according to table 3. The asterisks represent the values obtained in the decoupling limit, whereby only the first effect of those mentioned in section IIIA is accounted for.

3.2.4 The triple Higgs self-coupling

As mentioned in section 2, in composite Higgs models the Higgs potential is radiatively generated *à la* Coleman-Weinberg [14] and with the 4DCHM choice of the fermionic sector this turns out to be UV finite. From the effective potential and its derivatives at the minimum, one can extract the Higgs vacuum expectation value v , its mass m_H and its triple self-coupling λ . At the leading order in the contribution of the gauge and fermionic loops we get

$$\lambda = \frac{3m_H^2}{v} \frac{1 - 2\frac{v^2}{f^2}}{\sqrt{1 - \frac{v^2}{f^2}}} = \lambda_{\text{SM}} \frac{1 - 2\xi}{\sqrt{1 - \xi}}, \quad (3.4)$$

in agreement with [28].

This modified coupling intervenes in one of the two series of three Feynman diagrams of figure 3, which are, as mentioned, the ones concerning the HS and VBF double Higgs production cross sections at a future e^+e^- collider. Our scatter plot in figure 10 illustrates that sizable deviations in λ are possible in the 4DCHM with respect to the SM, reflecting in

	$ZHH @ 500 \text{ GeV}$	$\nu\bar{\nu}HH @ 1000 \text{ GeV}$
$b\bar{b}$	0.64	0.38

Table 4. Expected accuracies for cross section times BR measurements for a 125 GeV Higgs boson produced in pair via HS as given in ref. [26] at a future e^+e^- collider for two energy and luminosity stages, as detailed in the text. Only the $b\bar{b}$ decay mode of the Higgs boson is considered.

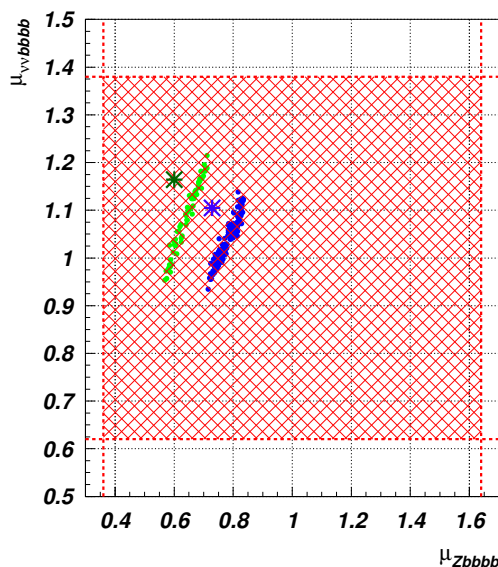


Figure 10. Correlations among $\mu_{Zb\bar{b}b\bar{b}}$ (ratio of double Higgs production cross sections via HS and subsequent decay into $b\bar{b}$ final state) and $\mu_{\nu_e\bar{\nu}_e b\bar{b}b\bar{b}}$ (ratio of double Higgs production cross sections via VBF and subsequent decay into $b\bar{b}$ final state) evaluated at a future e^+e^- collider for two energy and luminosity stages separately for the two processes, as detailed in the text. Plot is for two 4DCHM benchmarks, with $f = 800 \text{ GeV}$ and $g_\rho = 2.5$ (green points) and $f = 1000 \text{ GeV}$ $g_\rho = 2$ (blue points). The red shadowed areas represent the precision limits around the SM expectations according to table 4. The asterisks represent the values obtained in the decoupling limit, whereby only the first effect of those mentioned in section IIIA is accounted for.

a variation of production and/or decay rates at the level of several tens of percent. However, accuracies in the corresponding measurements at a future electron-positron collider ought to be reduced by a factor of two or so, in order to disentangle composite Higgs model effects. This is in line with the pursuit of the so-called ILC(LumUP) high luminosity scenario [25], in the hope to decrease the expected error on such an observable down to a level comparable to the expected departures from the SM value.

4 Conclusions

In summary, we have used the 4DCHM to illustrate the potential of future e^+e^- machines operating at energies between 250 and 1000 GeV, with appropriate luminosity options, in testing the salient features of composite Higgs models. We have in particular shown that the approach of reducing the problem to a simple rescaling of SM production and decay

rates and consequent extrapolations could be inaccurate in certain regions of the parameter space, as it fails to account for significant effects that can arise from mixing between SM and 4DCHM particles or interference effects between the two, whenever the mass spectra of extra gauge bosons or fermions present in these scenarios are allowed to exist around the compositeness scale, as indeed natural in these scenarios. In fact, propagator effects of the additional heavy states present in composite Higgs models are often the most visible signals. Such an approach instead naively integrates out all heavy particles. Clearly, the ensuing inaccuracies are the larger the smaller (higher) the new particle masses (collider energies) are. In short, for mass spectra in either or both the gauge and fermionic sectors of the 4DCHM consistent with all current experimental and theoretical bounds, the effects studied here are tangible in most hallmark observables, such as Higgs production in single mode via HS, VBF, in association with $t\bar{t}$ pairs as well as in (potentially) double Higgs production, both via HS and VBF. Hence, our results indicate that this kind of studies must be based on a complete implementation of the relevant composite Higgs models, one example of which we make available for public use via the High Energy Physics Model Data-Base (HEPMDB) [41] at <https://hepmdb.soton.ac.uk/> under the “4DCHM” name.

Acknowledgments

DB and SM are financed in part through the NExT Institute. The work of GMP has been supported by the European Community’s Seventh Framework Programme (FP7/2007-2013) under grant agreement n. 290605 (PSI-FELLOW/COFUND). DB and GMP would like to thank the Galileo Galilei Institute (GGI) in Florence for hospitality while part of this work was carried out.

Open Access. This article is distributed under the terms of the Creative Commons Attribution License ([CC-BY 4.0](https://creativecommons.org/licenses/by/4.0/)), which permits any use, distribution and reproduction in any medium, provided the original author(s) and source are credited.

References

- [1] ATLAS collaboration, *Observation of a new particle in the search for the Standard Model Higgs boson with the ATLAS detector at the LHC*, *Phys. Lett. B* **716** (2012) 1 [[arXiv:1207.7214](https://arxiv.org/abs/1207.7214)] [[INSPIRE](#)].
- [2] CMS collaboration, *Observation of a new boson at a mass of 125 GeV with the CMS experiment at the LHC*, *Phys. Lett. B* **716** (2012) 30 [[arXiv:1207.7235](https://arxiv.org/abs/1207.7235)] [[INSPIRE](#)].
- [3] Y. Golfand and E. Likhtman, *Extension of the Algebra of Poincaré Group Generators and Violation of p Invariance*, *JETP Lett.* **13** (1971) 323 [*Pisma Zh. Eksp. Teor. Fiz.* **13** (1971) 452] [[INSPIRE](#)].
- [4] J. Wess and B. Zumino, *Supergauge Transformations in Four-Dimensions*, *Nucl. Phys. B* **70** (1974) 39 [[INSPIRE](#)].
- [5] A. Djouadi, *The Anatomy of electro-weak symmetry breaking. II. The Higgs bosons in the minimal supersymmetric model*, *Phys. Rept.* **459** (2008) 1 [[hep-ph/0503173](https://arxiv.org/abs/hep-ph/0503173)] [[INSPIRE](#)].

- [6] D.B. Kaplan and H. Georgi, $SU(2) \times U(1)$ *Breaking by Vacuum Misalignment*, *Phys. Lett. B* **136** (1984) 183 [INSPIRE].
- [7] H. Georgi and D.B. Kaplan, *Composite Higgs and Custodial $SU(2)$* , *Phys. Lett. B* **145** (1984) 216 [INSPIRE].
- [8] H. Georgi, D.B. Kaplan and P. Galison, *Calculation of the Composite Higgs Mass*, *Phys. Lett. B* **143** (1984) 152 [INSPIRE].
- [9] M.J. Dugan, H. Georgi and D.B. Kaplan, *Anatomy of a Composite Higgs Model*, *Nucl. Phys. B* **254** (1985) 299 [INSPIRE].
- [10] J. Espinosa, C. Grojean and M. Muhlleitner, *Composite Higgs Search at the LHC*, *JHEP* **05** (2010) 065 [arXiv:1003.3251] [INSPIRE].
- [11] S. De Curtis, M. Redi and A. Tesi, *The 4D Composite Higgs*, *JHEP* **04** (2012) 042 [arXiv:1110.1613] [INSPIRE].
- [12] D.B. Kaplan, *Flavor at SSC energies: A New mechanism for dynamically generated fermion masses*, *Nucl. Phys. B* **365** (1991) 259 [INSPIRE].
- [13] K. Agashe, R. Contino and A. Pomarol, *The Minimal composite Higgs model*, *Nucl. Phys. B* **719** (2005) 165 [hep-ph/0412089] [INSPIRE].
- [14] S.R. Coleman and E.J. Weinberg, *Radiative Corrections as the Origin of Spontaneous Symmetry Breaking*, *Phys. Rev. D* **7** (1973) 1888 [INSPIRE].
- [15] A. Belyaev, N.D. Christensen and A. Pukhov, *CalcHEP 3.4 for collider physics within and beyond the Standard Model*, *Comput. Phys. Commun.* **184** (2013) 1729 [arXiv:1207.6082] [INSPIRE].
- [16] A. Semenov, *LanHEP — a package for automatic generation of Feynman rules from the Lagrangian. Updated version 3.1*, arXiv:1005.1909 [INSPIRE].
- [17] D. Barducci, A. Belyaev, S. De Curtis, S. Moretti and G.M. Pruna, *Exploring Drell-Yan signals from the 4D Composite Higgs Model at the LHC*, *JHEP* **04** (2013) 152 [arXiv:1210.2927] [INSPIRE].
- [18] D. Barducci, A. Belyaev, M. Brown, S. De Curtis, S. Moretti et al., *The 4-Dimensional Composite Higgs Model (4DCHM) and the 125 GeV Higgs-like signals at the LHC*, *JHEP* **09** (2013) 047 [arXiv:1302.2371] [INSPIRE].
- [19] S. Jadach and B. Ward, *Yfs2: The Second Order Monte Carlo for Fermion Pair Production at LEP/SLC With the Initial State Radiation of Two Hard and Multiple Soft Photons*, *Comput. Phys. Commun.* **56** (1990) 351 [INSPIRE].
- [20] M. Skrzypek and S. Jadach, *Exact and approximate solutions for the electron nonsinglet structure function in QED*, *Z. Phys. C* **49** (1991) 577 [INSPIRE].
- [21] T. Behnke, J.E. Brau, B. Foster, J. Fuster, M. Harrison et al., *The International Linear Collider Technical Design Report - Volume 1: Executive Summary*, arXiv:1306.6327 [INSPIRE].
- [22] M. Aicheler, P. Burrows, M. Draper, T. Garvey, P. Lebrun, K. Peach and N. Phinney et al., *A Multi-TeV Linear Collider Based on CLIC Technology: CLIC Conceptual Design Report*, CERN-2012-007.
- [23] M. Bicer, H. Duran Yildiz, I. Yildiz, G. Coignet, M. Delmastro et al., *First Look at the Physics Case of TLEP*, arXiv:1308.6176 [INSPIRE].

- [24] M.E. Peskin, *Comparison of LHC and ILC Capabilities for Higgs Boson Coupling Measurements*, [arXiv:1207.2516](#) [INSPIRE].
- [25] D. Asner, T. Barklow, C. Calancha, K. Fujii, N. Graf et al., *ILC Higgs White Paper*, [arXiv:1310.0763](#) [INSPIRE].
- [26] H. Baer, T. Barklow, K. Fujii, Y. Gao, A. Hoang et al., *The International Linear Collider Technical Design Report - Volume 2: Physics*, [arXiv:1306.6352](#) [INSPIRE].
- [27] C. Grojean, O. Matsedonskyi and G. Panico, *Light top partners and precision physics*, *JHEP* **10** (2013) 160 [[arXiv:1306.4655](#)] [INSPIRE].
- [28] R. Contino, C. Grojean, D. Pappadopulo, R. Rattazzi and A. Thamm, *Strong Higgs Interactions at a Linear Collider*, [arXiv:1309.7038](#) [INSPIRE].
- [29] W. Buchmüller and D. Wyler, *Effective Lagrangian Analysis of New Interactions and Flavor Conservation*, *Nucl. Phys. B* **268** (1986) 621 [INSPIRE].
- [30] J. Aguilar-Saavedra, *Effective four-fermion operators in top physics: A Roadmap*, *Nucl. Phys. B* **843** (2011) 638 [Erratum *ibid.* **B 851** (2011) 443] [[arXiv:1008.3562](#)] [INSPIRE].
- [31] B. Grzadkowski, M. Iskrzynski, M. Misiak and J. Rosiek, *Dimension-Six Terms in the Standard Model Lagrangian*, *JHEP* **10** (2010) 085 [[arXiv:1008.4884](#)] [INSPIRE].
- [32] G. Giudice, C. Grojean, A. Pomarol and R. Rattazzi, *The Strongly-Interacting Light Higgs*, *JHEP* **06** (2007) 045 [[hep-ph/0703164](#)] [INSPIRE].
- [33] R. Contino, M. Ghezzi, C. Grojean, M. Muhlleitner and M. Spira, *Effective Lagrangian for a light Higgs-like scalar*, *JHEP* **07** (2013) 035 [[arXiv:1303.3876](#)] [INSPIRE].
- [34] I. Brivio, T. Corbett, O. Éboli, M. Gavela, J. Gonzalez-Fraile et al., *Disentangling a dynamical Higgs*, [arXiv:1311.1823](#) [INSPIRE].
- [35] A. De Simone, O. Matsedonskyi, R. Rattazzi and A. Wulzer, *A First Top Partner Hunter's Guide*, *JHEP* **04** (2013) 004 [[arXiv:1211.5663](#)] [INSPIRE].
- [36] D. Barducci, L. Fedeli, S. Moretti, S. Curtis and G. Pruna, *Leptonic final states from di-boson production at the LHC in the 4-Dimensional Composite Higgs Model*, *JHEP* **04** (2013) 038 [[arXiv:1212.4875](#)] [INSPIRE].
- [37] J.A. Conley, J.L. Hewett and M.P. Le, *Determination of lightest Higgs model parameters at the ILC*, *Phys. Rev. D* **72** (2005) 115014 [[hep-ph/0507198](#)] [INSPIRE].
- [38] K. Hartling and H.E. Logan, *High-energy suppression of the Higgsstrahlung cross-section in the Minimal Composite Higgs Model*, *JHEP* **01** (2013) 167 [[arXiv:1208.1018](#)] [INSPIRE].
- [39] R. Contino, D. Marzocca, D. Pappadopulo and R. Rattazzi, *On the effect of resonances in composite Higgs phenomenology*, *JHEP* **10** (2011) 081 [[arXiv:1109.1570](#)] [INSPIRE].
- [40] M. Redi and A. Tesi, *Implications of a Light Higgs in Composite Models*, *JHEP* **10** (2012) 166 [[arXiv:1205.0232](#)] [INSPIRE].
- [41] G. Brooijmans, B. Gripaios, F. Moortgat, J. Santiago, P. Skands et al., *Les Houches 2011: Physics at TeV Colliders New Physics Working Group Report*, [arXiv:1203.1488](#) [INSPIRE].