

## Supporting Active Aging Through A Home Automation Infrastructure for Social Internet of Things

Vittorio Miori\*, Dario Russo, Luca Ferrucci

*Institute of Information Science and Technologies (ISTI), CNR-National Research Council of Italy, Via Moruzzi 1, Pisa 56124, Italy*

---

### ARTICLE INFO

Article history:

Received: 30 May, 2018

Accepted: 05 July, 2018

Online: 29 July, 2018

---

Keywords:

SIoT

IoT

Interoperability

SOA

SOCIALIZE

AAL

Smart Home

Active Ageing

---

---

### ABSTRACT

*The number of smart devices inside the living environments grows more and more every day, and with it the need to interface them in order to share data and activate functions. Each day, new scenarios and new applications emerge to make our lives easier in many different contexts. The AAL SOCIALIZE project aims to create a new reference platform for active ageing by applying technological solutions to care for the health of the elderly, facilitate their daily activities, simplify their access to dedicated services.*

*The work presented herein describes the "Elderly Monitoring service" – an IoT module of the SOCIALIZE platform, whose aim is to monitor elderly people's activities and physiological parameters and to combine smart device functions. This modeling process can actively contribute to anticipating, and thereby preventing, emergency situations, increasing elderly autonomy and making them feel "protected" and "safe".*

*In this regard, the system implements a practicable, scalable solution that allows heterogeneous devices belonging to different domotic systems using diverse protocols to interact with each other, share data and services and bind together through 'friendship', thereby creating an infrastructure suitable for the creation of a true Social IoT (SIoT).*

---

### 1. Introduction

This paper is an extension of the work originally presented in *2017 Global Internet of Things Summit (GIoTS)* [1].

The issues involved in welfare and health costs sustainability are currently the focus of widespread discussion in many nations of the world. Of such issues, one of the most frequently addressed is population ageing. The ageing population will soon become one of the most demanding Big Societal Challenges that the world will face [2]. Over the last 150 years, life expectancy has risen by 50 years, and over the last half century alone it has increased by three years every decade.

Hand in hand with ageing, it is highly likely that the elderly will experience an increase in disability and dependence, along with a greater incidence of age-related illnesses and the need for medication [3]. The majority of the ageing population experiences progressive deterioration of their health from 50 to 80 years of age. As a result, there is an interval of 30 years during which subjects age with deteriorating health – a critical aspect to take into consideration when seeking to preserve good quality of life for the elderly. Over recent years the elderly population has been growing.

This is mainly due to the progressive increase in life expectancy and the low fertility rates affecting an ever greater proportion of the overall population [4]. This progressive increase in the elderly population has led to a new phenomenon: so-called active ageing. According to the definition of the *World Health Organization* [5], active aging is "a process of optimization of opportunities for health, participation and safety in order to improve the quality of life of older people". Active aging is epitomized by elderly people who, rather than spend their entire day sitting at home, bored, in an armchair, voluntarily stay in the workforce for as long as they can, they exercise, they train, they take care of their children and grandchildren. They are over 65-70 years of age, they are healthy, they are satisfied and they often have acquired skills, including on the technological and logical levels. In the near future, the upcoming candidates to join the ranks of the active aging are currently in the age range of 50-60 years. The European Community is actively involved in caring for the active ageing, and to such end has launched the programme "Ageing well in the information society". Moreover, the European Commission declared 2012 "The Year of Active Ageing and Solidarity between Generations". One result of the measures adopted in 2012 is the formulation of the active ageing index, which measures the ability of older people to achieve their full potential in terms of

---

\* Corresponding author: Vittorio Miori, Email: [vittorio.miori@isti.cnr.it](mailto:vittorio.miori@isti.cnr.it)

employment, social and cultural participation and maintaining autonomy.

In an information society, *Information and Communication Technology (ICT)* plays an important role for the active elderly. Utilizing the *WWW*, for example, they can get information, have social interactions, participate in social and political life, enjoy simplified access to administrative and commercial transactions, find online entertainment and leisure activities, and so on [6]. Moreover, *ICT* offers a great opportunity for older people living home alone. According to the *Internet of Things (IoT)* paradigm, objects are rendered 'intelligent'— they can be discovered, localized, and acquire, process and exchange data. Smart Home & Building applications are particularly important in the *IoT* scenario, as they are the link between the individual (citizen, consumer) and the overlying layers implementing the *IoT* paradigm (Smart City, Smart Grid) [7].

The *IoT* is however not merely a distant vision of the future – it is already here and is having an impact on more than just technological developments. It permits sophisticated devices to share information directly with each other and the cloud, making it possible to collect, record and analyze new data streams faster and more accurately. So, it is now possible to exploit a broad set of services able to improve the autonomy of the elderly [8] and constantly monitor their health status and identify any potentially hazardous conditions [9]. Connected 'smart objects' can be used to collect data on the health status of home residents, particularly those at risk. The *IoT* will thus make possible to create environments equipped with such intelligent devices in which an older person's state of health is constantly monitored, allowing for more effective management of his or her long-term well-being. The advent of the *IoT* and its new technological capabilities offers many advantages over traditional health monitoring. In particular, conventional monitoring systems are not predictive, that is, they cannot offer the same accuracy as modern biometric detection systems, which are capable of recognizing emergencies before they occur, and they do not have the ability to "automatically" launch a warning to formal and/or informal caregivers without direct action by the elderly person.

Instead, by combining wearable devices with *IoT* these limitations can be overcome. Commercial products offering similar such features already exist: intelligent watches whose functions range from detecting movements indicating a possible fall and contacting the authorities or relatives, to the ability to "learn" a person's normal activities and send an alert by text message, email, or other app if a significant change occurs (e.g. a user lies in bed for an entire weekend).

The last frontier of the *Internet of Things* is the evolution of objects that are 'merely' smart to objects that can be social. This paradigm is called *Social Internet of Things (SIoT)* [10,11]. The *SIoT* is defined as an *IoT* in which objects are capable of establishing social relationships with other objects, independently of human intervention, thereby creating a social network of objects.

The key principle guiding the *SOCIALIZE* project [12] is to create a complete technological solution which effectively fulfills the general objectives of the third call of the *EU – AAL (Ambient Assisted Living)* programme. The *SOCIALIZE* project is creating a new, specialized platform expressly dedicated to today and tomorrow's active ageing people in order to facilitate their participation in social life.

The authors' main contribution to the project presented in this work is the study and development of a *SIoT* ready service, called the *Elderly Monitor*, which is fully integrated into the *SOCIALIZE* platform. The function of the service is to monitor the activities of home occupants, collect and analyze personal and environmental parameters from various, technologically heterogeneous devices and enable them to cooperate and share data. The results of the monitoring can be accessed by doctors, relatives and/or caregivers as deemed appropriate with regard, for example, to the cognitive, health status and wishes of the person in question.

The paper is organized as follows: in *The Social IoT (SIoT)* section is introduced the feature and advantages of the *SIoT* approach, in the *Related work* section are shown the most significant solutions for the monitoring and analysis of the user's health parameters, the main applications of the *IoT* in the health field and the most widely used *SIoT* approaches. In the section *Socialize Project* is presented the *SOCIALIZE* project with its main features and objectives. This section allows to illustrate the context in which the application presented in this work was studied and developed. In the section *SmartSMILE framework* is described in detail the ideas of the proposed solution. In the *Implementation* section are described how some domotic technologies have been integrated in the framework. In the *Field trials* section are shown the deployment and the experiments carried out to verify the correct functioning of the system. Finally, we have the *Conclusions* section that summarizes and concludes the work.

## 2. The Social IoT (SIoT)

Adoption of the *SIoT* paradigm presents several further advantages: (i) the resulting structure of such object networks can be shaped as required to guarantee network navigability and effectively perform the discovery of objects and services, thereby guaranteeing scalability, just as in human social networks; (ii) a level of trustworthiness can be established to leverage the degree of interaction among things that are 'friends'; (iii) models designed to study social networks can be reused to address *IoT* related issues (intrinsically related to extensive networks of interconnected objects). Thanks to the implementation of this paradigm, devices become part of a social network of objects. As in human social networks, the concept of "friend" plays a key role in *SIoT*. By exploiting device friendship, things can be made to interoperate autonomously by implementing intelligent behaviors [13]. This scenario has opened up the possibility for new object intelligence: the ability to discover new services, activate new contacts with other objects, share information with them, and use the capabilities of other objects towards the attainment of a common goal.

In order for *SIoT* principles to be effectively applied, the communication and integration infrastructure of *IoT* devices must be built in such a way as to address specific challenges. If we consider the domestic environment, most of them concern the lack of interoperability between the diverse installed home automation systems, but not only. The *SIoT* must be based on an infrastructure able to support the following services:

- *Discovery*: the ability for devices to detect the functions of other devices. This service is useful to automatically identify device functions that could be combined together to create new, more advanced ones. This implies that each service of each device must be identified, addressed and described using an ontology, taxonomy or free-text description that follows predefined rules in order to be computed.

- *Composition*: the ability to combine the functions of different devices to create new system capabilities. To do this, the constituent devices of a system have to “speak” the same language. This can only be obtained either by using devices that adopt the same communication technology or by implementing interoperability between natively incompatible devices to share states, values and function calls. Interoperability is the ability of two or more incompatible systems to communicate in a way to create a functional dependence between them, allowing them to act like a single system that behaves as a single entity [14].
- *Trustworthiness management*: the ability to understand how to use the information provided by other devices. To implement this service, it is useful to apply the concepts of centrality, prestige and reliability. Centrality measures the number of contacts any given device has within the network; prestige measures how many other devices seek that device. Centrality and prestige are summarized in a value called reliability. These measures are particularly interesting in big *IoT* scenarios, in which the network is made up of numerous devices and a mechanism is needed to determine which are most dependable for reaching a particular goal.

On the contrary, the vast majority of existing *IoT* interoperability platforms are not designed to offer all these features in an integrated way. Devices and applications do not communicate directly between each other, but use cloud connectivity, computing and storage features as intermediaries.

In fact, in January 2016, with the *Horizon 2020 research programme*, the European Commission funded seven projects to address the interoperability of the *Internet of Things: Inter-IoT* [15], *BIG IoT* [16], *AGILE* [17], *symbIoTe* [18], *VICINITY* [19], *bloTope* [20]. In general, the most widely followed technical approach to address these issues is the implementation of a hierarchical *IoT* stack connecting smart objects and *IoT* gateways with the cloud. In these projects, interoperability is implemented by collecting device data in the cloud (typically in a database) where they can be queried in order to process information.

### 3. Related work

The current scientific literature addresses the issue of elderly health monitoring with solutions that are able to collect and then display data, typically through a web interface, to formal and / or informal caregivers who can check them to oversee an elderly person’s health status. In addition to allowing viewing of the collected data, most of the proposed solutions include a preliminary automatic analysis of the occupant’s health. Such analyses take different approaches. Some check whether a prefixed threshold for some specific health parameter (e.g. heart rate) has been exceeded and then send a notification to designated recipients. Others use more advanced intelligent systems that are able to understand trends in a set of specific user parameters and thereby make decisions and automatically launch alarms and warnings when vital sign values are considered suspicious. Some examples of this kind of systems are those that analyze data in real time. In [21], the author proposes a pervasive patient health monitoring (*PPHM*) system based on wireless wearable devices integrated through a cloud computing infrastructure. The work presents also a solution based on *ECG* to monitor patient suffering of congestive heart failure; in [22], the author proposes a system to monitor cardiac activities using wireless wearable sensors and an *Android* device, taking into consideration cost and ease of use;

*GiraffPlus* [23] project belongs to the Programme for Research and Technological Development in the Seventh Framework (2007-2013), which proposes a monitoring system solution based on environmental wireless sensors and a robot recognising user’s activities and physiological parameters; in [24], the author proposes a work to monitor in mobility patients using *6LoWPAN (IPv6 over Low-Power Wireless Personal Area Networks)* devices in a hospital; in [25], the author presents an *NFC* and *RFID* based telemonitoring mobile solution to monitor blood pressure and heart rate; in [26], the author shows a mobility medication control system exploiting *RFID* technology.

With the growth of information coming from numerous sensors, the management of health data is crucial. Literature presents two interesting and innovative approaches to health data management: in [27], the author offers an engine for querying data from heterogeneous sources; in [28], the author presents a cloud computing system based on data mining procedures to correlate health and lifestyle.

All the presented works are examples of *IoT* technology applied to the health field. Unfortunately, virtually all have been designed for, and are strictly tied to, specific proprietary hardware or devices and technological communication standards, creating quite strong constraints on the choice of devices to be used for monitoring. To overcome such limitation and enable devices to be chosen based on their functionalities, cost and performance, regardless of purely technical and compatibility aspects, a system is needed that allows different devices using different communication standards to work together at the same time.

Current literature studies apply the social concept to *IoT* in two different ways: devices interacting directly with humans, following the example of Social Networks (*SIoT* between devices and humans) [29] and devices that interact amongst themselves in a *Social IoT* way (*SIoT* between devices). This twofold interpretation of *SIoT* has been described in [30], which also provides some examples of interactions between devices. In [31], the author extends and formalizes the differences between these two scenarios by defining the integration of devices within Social Networks as the *Web of Things (WOT)* and direct interactions between devices as the *SIoT* proper. They also detail the state of the art of the underlying technologies and apply these concepts to Wireless Sensor Networks. In [32], the author presents a solution and a prototype able to establish communications between two or more heterogeneous devices by exploiting their proximity (the communication takes place only when devices are near each other). Once again, most of the *SIoT* approaches proposed in the literature are designed for specific proprietary hardware or devices.

With regard to the current state of the art, herein we present a new home automation interoperability architecture based on the “friend” concept applied to services and devices. The greatest advantage offered by the system is that it is designed to integrate new devices, home automation systems or sensor networks, even if they communicate through different, incompatible native protocols. Exploiting the *SIoT* paradigm, devices and services communicate and share values and states with each other directly, without the need for intermediary components such as a database.

One direct consequence of Social paradigm approach is the advantage of being able, as needed or convenient, to freely replace any device or appliance of a specific brand with another brand’s device without interfering with the functioning of the entire system. It moreover allows for the possibility of supporting the

network application layers implementing the *SIoT* functions for different purposes, as well.

#### 4. Socialize Project

The *SOCIALIZE* (Service Oriented Assisted Living Infrastructure) project aims to meet the needs of today's (and future) active ageing. The projects aims to create a complete technological Web solution which integrates into a single platform a multiplicity of services designed specifically for the senior population and their caregivers (secondary end users). These services aim to strengthen social relations among the elderly, and with their relatives, who often live far away, and to create a sense of security and autonomy at home. The distance separating relatives from and older person living alone at home represents a potential health and security risk. In fact, the elderly are more subject to chronic diseases and unexpected critical health events. For these reasons, it is crucial to be able to monitor their health status and activities in order to identify any possible worsening of their conditions and avoid dangerous situations.

Although the *SOCIALIZE* Project is currently aimed at active ageing people with a certain degree of knowledge about the use of technological equipment, the ultimate goal is to make the platform accessible to all elderly people, including and especially, the large proportion of the older population that nowadays has great difficulty accessing and using *ICT*. For this reason, the user interfaces have been given rather simplified designs to make them easy to use, thereby permitting the inclusion of the largest number of elderly as possible.

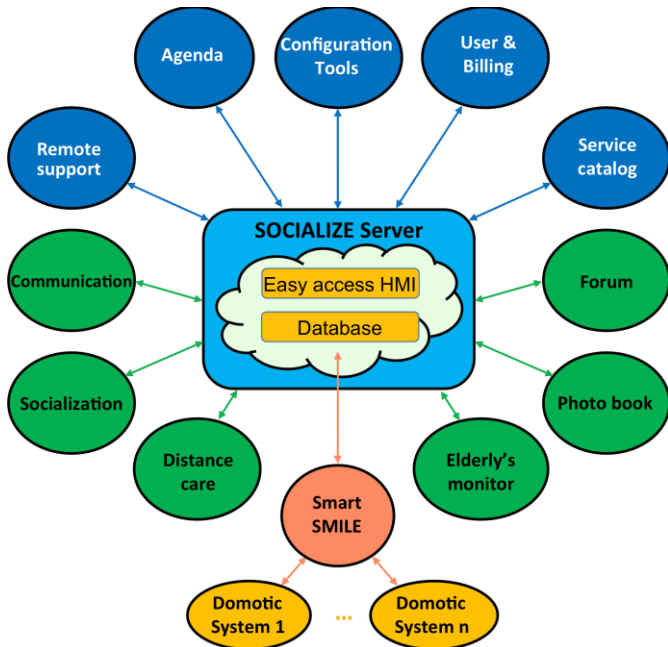


Figure 1: SOCIALIZE services

The services supplied by the project (Figure 1) can be divided in three categories:

- *Socialization* services: which aim to improve older people's social interactions. These include: (a) *communications*: enables exchanging messages and making audio / video call between the members of the *SOCIALIZE* community; (b) *socialization*: a dedicated social network between *SOCIALIZE* members; (c) *forum*: an advanced application for

discussion of topics of general and personal interest; it can also highlight the most interesting discussions; (e) *photo book*: for storing and organizing photos and videos; (f) *distance care*: can follow the member's movements and monitor daily activities, and even warn of any threats; (g) *monitor*: analyzes user activities, as well as personal and environmental parameters; the results of this monitoring can be supervised by doctors, relatives and / or caregivers as is deemed appropriate with regard, for example, to the cognitive, health status and wishes of the elderly;

- *Cross services*: vertical applications common to all socialization services. The cross services currently implemented are: (a) *configuration tool*: provides for configuration of the system and services; (b) *user & billing*: manages *SOCIALIZE* platform users and their access credentials; (c) *remote support*: which provides help on using the *SOCIALIZE* platform or, more generally, computers or the device used; (d) *agenda*: collects all the events and date/time-related activities for a given user; (e) *service catalogue*: manages the available services, enabling them to communicate through the use of an enterprise bus system;
- *Cloud services*: it allows to the different services provided by the platform to communicate by sharing data and functionalities and it hosts the database containing data coming from the different Socialize service components. It consists of: (a) *easy access Human Machine Interface (HMI)*, a web application with public and private content that acts as the entry point to the *Socialize* platform; (b) *database*, containing all the information related to users and services.

#### 5. SmartSMILE framework

##### 5.1. Concepts and use cases

The elderly monitor service is part of the *SOCIALIZE* platform. Its aim is, on one hand, to monitor elderly people's activities and physiological parameters to display processed data to caregivers, doctors, and relatives, to notify them of suspicious values, and on the other, to combine device functions to improve the individuals' life at home, increasing their autonomy and making them feel "protected" and "safe". To these ends, the *SmartSMILE* (Socialize MiddleWare Elderly) framework was created. *SmartSMILE* is a monitoring and interoperability *SIoT* ready software infrastructure for the socialization between devices. It is based on *SOA Web Services* and *XML* technologies to create intelligent domestic environments whose components collaborate to provide for the integration and interoperability of devices and household utilities belonging to different, incompatible native technologies. In fact, *SmartSMILE* creates an abstraction layer that overcomes the limitations of device compatibility, thereby enabling both the monitoring and composition services to work irrespective of the technologies of individual devices.

Figure 2 shows a monitoring use case. When a device changes its state, the new value is collected in a repository. When needed, all stored values are retrieved to be displayed to caregivers, doctors and family members. A device state change can in general occur for three main reasons:

- *Direct interaction*: the user physically acts on the device to change its status (e.g. pressing a button);

- Indirect interaction: the user acts on the device without touching it (e.g. through a smartphone);
- Involuntary interaction: the user does not interact with the device, but its state changes as the result of some event (e.g. a PIR sensor detects a presence in the environment).

Figure 3 shows a use case related to activation of the interoperability function. When a device changes its state, *SmartSMILE* verifies the condition to activate interoperability between devices. To do this, *SmartSMILE* (Figure 3) activates a *friendship manager* that searches for a friend relation that involves the device. If one is found, the other device is identified and the corresponding function is automatically activated. A device function is a command that any given smart device can execute. For example, the functions for a lamp can be *switch on*, *switch off* and *getStatus*. The *friendship manager* is a special component of *SmartSMILE* that defines which devices can interact with each other, and how, to create a composition of functions. As friends, two or more devices are trusted and are thus enabled to access each other's private data and functions, thereby providing interoperability.

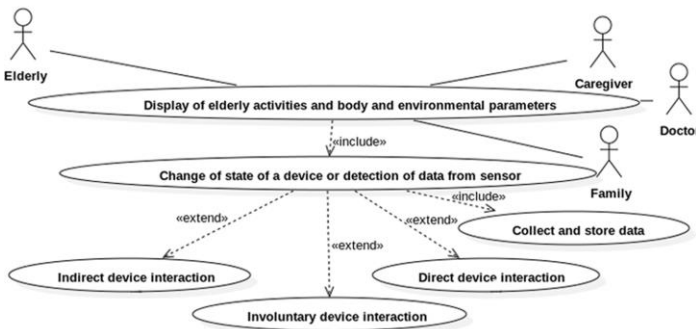


Figure 2: Monitoring use case

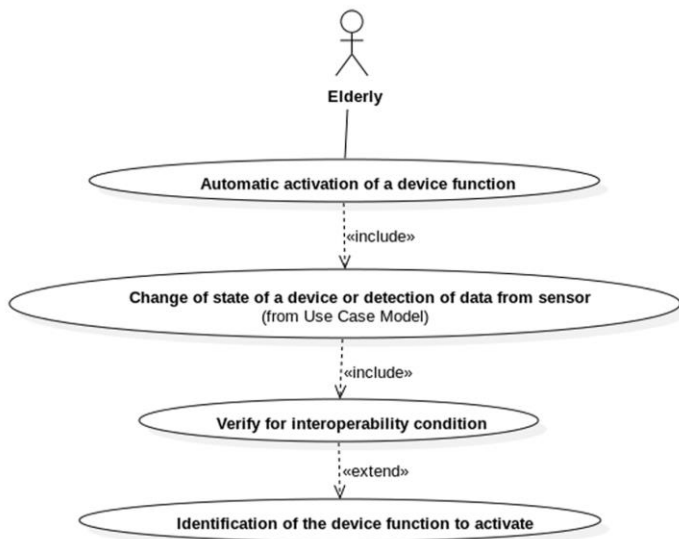


Figure 3: Interoperability use case

### 5.2. Architectural description

The *SmartSMILE* architecture (Figure 4) is made up of a set of sub-modules, called gateways. Each gateway interfaces with specific domotic systems expressly installed inside the home. The

gateway serves the function of managing its own set of devices, integrating and interfacing them with the platform. To uniformize devices belonging to different gateways, *SmartSMILE* uses a high-level ad hoc language, called *SmartSmileML*, to describe devices in a technology-independent fashion. Such description includes their main characteristics, and the functions that they can execute, along with their input and output parameters and defined data types. Moreover *SmartSmileML* describes the possible events (e.g. device state change) specific to the supported domotic technologies for processing. To describe devices, functions and events, *SmartSmileML* uses an XML based language. Its functioning does not require prior definition of taxonomies or classifications for devices and events. By avoiding the use of pre-defined devices, the system is able to manage any kind of device, exploiting all the available functions that are automatically identified during its creation.

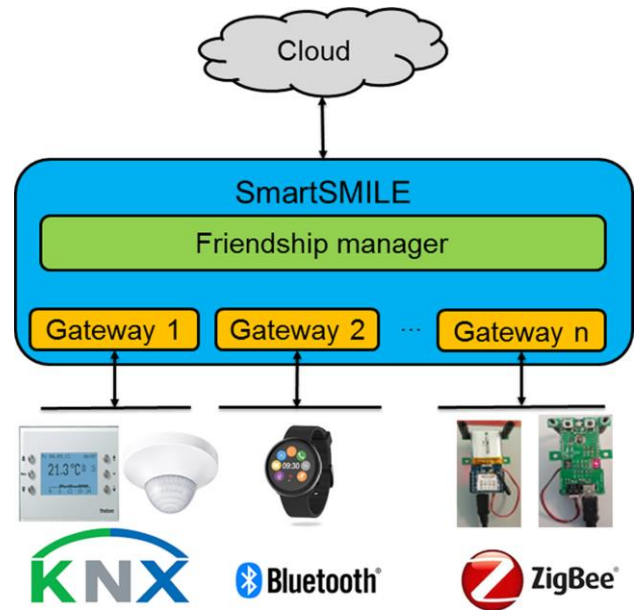


Figure 4: SmartSMILE architecture

In order for the system to work, each gateway has to implement some basic features; these are:

- Creation of the high-level description of devices belonging to its network: This operation enables having a unique view of, and access to all the devices belonging to *SmartSMILE*. In this way, *SmartSMILE* can use a unified way to interact with them. For this to work, the gateway must be able to map the device descriptions with the corresponding real devices.
- Capture of events that occur in the automated home network and translation into the *SmartSmileML* language. This allows for monitoring events in the domotic bus and enables *SmartSMILE* to react accordingly. The obtained information are translated into the *SmartSmileML* and are sent to the cloud server for collection and querying as needed.
- Translation of a *SmartSmileML* function description into the corresponding domotic command. This enables *SmartSMILE* to invoke commands in devices. To do this the system must know the corresponding gateway managing each device.

### 5.3. SmartSmileML language

*SmartSmileML* consists of two main formalisms: *SmartSMILE Device* and *SmartSMILE Message*.

#### SmartSMILE Device

*SmartSMILE Device*: defines devices and their functions. In particular, it describes the characteristics of each device and the processes by which it interacts with other *SmartSMILE Devices*. The XML description includes the following tags:

- *device*: the *root* element that is the *parent* of all other elements. The main attributes contained in this tag are: (a) *description*: a free text field; (b) *id*: the identifier of the device within the *SmartSMILE* framework; such identifier must be clearly unique; (c) *serialNumber*: a device identifier in the domotic technology; (d) *tech*: the domotic technology employed by the device; this allows for immediate assignment of the device to the proper gateway; (e) *type*: the kind of device; this can be a free text field or contain pre-defined values;
- *service*: *child* of the *device* tag. There is a *service* tag for each device function. The main attributes are: (a) *name*: the name used in the relevant domotic technology to call that function; (b) *output*: the *SmartSMILE* data type; this attribute is defined, only if the function returns a value;
- *input*: *child* of the *service* tag. There is an *input* tag for each input parameter that the function requires. The main attributes are: (a) *name*: a label for the input; (b) *type*: the *SmartSMILE* data type;
- *allowed*: *child* of the *input* tag. There is a tag for each possible value that that input value can take. If no allowed tags are defined, it means that any value is allowed for the declared *SmartSMILE* data type (e.g. if the type is *int*, and no *allowed* tags are defined, the input can be any integer value. The main attribute is *value*: the allowed value;
- *linkedService*: *child* of *service* tag. If defined, it describes friendship relations with other devices. The main attributes are: (a) *id*: the id used in *SmartSMILE* to identify the friend device; (b) *service*: the name of the function of the friend device to invoke to create compositions;
- *linkedInput*: *child* of *linkedService*. There is a *linkedInput* tag for each input of the friendly device function to invoke. The main attributes are: (a) *from*: the name of the input to the described function whose value is needed in order to be shared with the friend device function named in the *linkedService* tag; (b) *to*: the name of the input of the friendly device function whose value has to be assigned using the shared one; (c) *value*: if *from* attribute is not defined, this defines a fixed value for the *to* input name.

#### SmartSMILE Message

*SmartSMILE Message* formally describes events, commands and responses. The XML description establishes the following tags:

- *message*: the *parent* tag. The main attributes contained in this tag are: (a) *message*: the name of the function involved in the message; (b) *messageType*: defines the scope of the message: the possible options are: *COMMAND*, when the message is

addressed to a gateway for translation into a domotic message and written to the domotic bus for execution. In this case, the *message* attribute is related to the function to activate; *UPDATE*, when an event related to a device change of state is captured on the domotic bus, it is transmitted to the *Friendship manager* to check whether the conditions for interoperability are satisfied. In this case, the *message* attribute regards the device function that can be correlated to the change of state; (c) *senderId*: if the message is of type *UPDATE*, the id of the *SmartSMILE* device involved in the message; (d) *receiverId*: if the message is of type *COMMAND*, the id of the *SmartSMILE* device involved in the message;

- *input*: *child* of the *message* tag. This describes the values that are involved in the message. The main attributes are: (a) *name*: the name of the value; (b) *type*: the *SmartSMILE* data type; (c) *value*: the new value.

### 5.4. SmartSMILE SIoT features

Using *SmartSmileML*, it is possible to achieve interoperability among services and devices by taking advantage of a single means of communication and data sharing. Thus, it is possible to achieve a social network of intelligent objects, whereby devices are tied to each other by social relationships in order to collaborate and provide a common *SIoT* application. When a message passes through a domotic bus, it is captured by its gateway. The gateway identifies the correspondence between the device that sent the message and the associated description in *SmartSMILE Device*. Using the information in the device description, the captured event is translated into the *SmartSmileML* language, inserted into *SmartSMILE Message* and forwarded to the *Friendship manager* to check for the existence of relations, and finds the device and its function that can achieve the necessary interoperability. To verify and activate the friendship, the *Friendship manager* checks the *linkedService* and *linkedInput* tags to verify the relation between the involved devices, and if it exists, it shares input and output values between them.

By way of example, let us assume we have two devices belonging to different domotic systems whose functions have to be combined as shown in Figure 5. The first device is a "wall switch" employing the *KNX* [33] technology. It has a function named *SET\_STATUS* (the content of the tag *service name*), whose input name *status* is an *OnOff* data type. The values of *OnOff* can be *on* or *off*. The second device is a "lamp", which instead uses *UPnP* [34] technology. It has two functions: *getState* and *setPower*. Both use a value of type *OnOff* as output and input respectively. The *device description* of the function *SET\_STATUS* of the wall switch has a special tag, named *linkedService*. This tag permits the *Friendship manager* to establish a friend relation between the two devices and to create a composition of functions. When the *Friendship manager* receives the event that the wall switch is set to *on* (Figure 6), it 'knows' that it has to invoke the function *setPower* of the device with *id* = 3 (the lamp). The content of the *linkedInput* tag specifies that the wall switch shares the *status* value with the lamp. In the end the *Friendship Manager* invokes the lamp's *setPower* function, which will have the value *on* within the input named *power* (Figure 7).

The device descriptions are for the most part created automatically by the gateway. The complexity involved in this depends on the standard to be managed. For example, in *UPnP* the creation is completely automated because the devices present and

describe themselves each time they enter the network. For KNX, the descriptions are made by parsing a configuration file created by the configuration software named *ETS* [35]. In some cases, automating the process is not possible and it is necessary to write them manually.

```

<device description="wall switch" id="1"
  serialNumber="123" tech="KNX" type="switch">
  <service name="SET_STATUS">
    <input name="status" type="OnOff">
      <allowed value="on" />
      <allowed value="off" />
    </input>
    <linkedService id="3" service="setPower">
      <linkedInput from="status" to="power" />
    </linkedService>
  </service>
</device>

<device description="energetic saving lamp" id="3"
  serialNumber="456" tech="UPNP" type="lamp">
  <service output="OnOff" name="getState" />
  <service name="setPower">
    <input name="power" type="OnOff">
      <allowed value="on" />
      <allowed value="off" />
    </input>
  </service>
</device>
    
```

Figure 5: Two device descriptions in smartSMILE Device

```

<message message=" SET_STATUS " messageType="UPDATE"
  senderId="1">
  <input name="status" type="OnOff" value="on" />
</message>
    
```

Figure 6: The description of an event in SmartSMILE Message

```

<message message="setPower" messageType="COMMAND"
  receiverId="3">
  <input name="power" type="OnOff" value="on"/>
</message>
    
```

Figure 7: Command representation in SmartSMILE Message

## 6. Implementation

*SmartSMILE* exploits W3C-recommended standard Web technologies. It exposes services using *Web Services*, *SOA* and *XML* technologies. The advantage of using W3C standard solutions is that they ensure that the developed applications are fully compatible with other standards-based software and are not tied to any particular software system, programming language or computer architecture.

Figure 4 illustrates the deployment of the *SmartSMILE* component used in the *SOCIALIZE* Project. *SmartSMILE* is connected on one side to the Cloud server, where the values coming from devices are stored and recovered for any further analysis, and on the other side, to the wired or wireless domotic

buses. Through the intervention of *SmartSmileML*, communications between the Cloud server and *SmartSMILE* are performed using high-level messages as shown in Figure 6. In this way, the cloud does not need to ‘know’ how the different domotic technologies work in order to understand messages – it just needs to be able to “speak” *SmartSmileML*. In addition to collecting values, the *Cloud* provides a web server environment and a web application to show each user’s data to the caregivers. To match the received values from *SmartSMILE* with the respective user, the *Cloud* is previously configured associating devices to consumers.

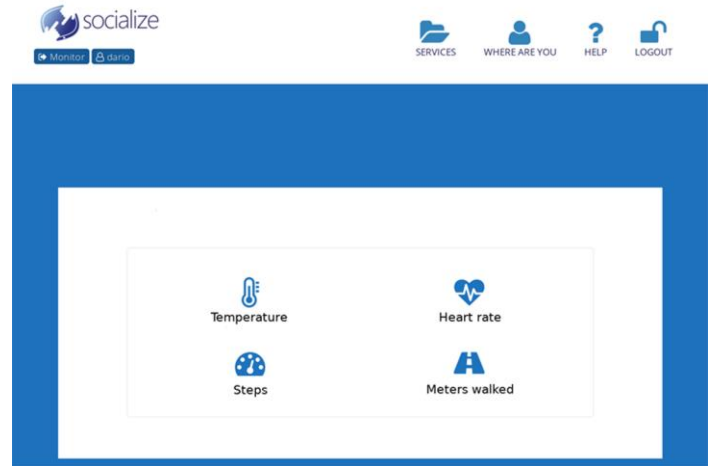


Figure 8: Example of main page of the web application

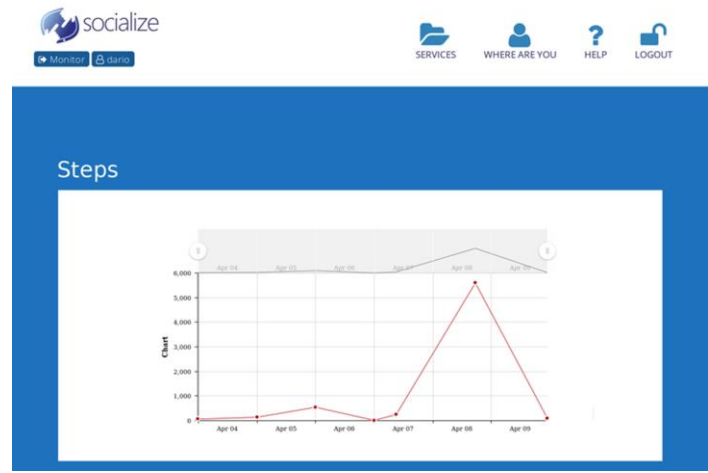


Figure 9: Example of “Steps” page of the web application

The different domotic technologies used in the project were: KNX, UPnP, MyHome [36], ZigBee and Bluetooth [37] KNX gateway. Table 1 shows the implemented classes for each developed *SmartSMILE* gateway. A brief description of each class is provided in the following subsections.

### 6.1. KNX gateway

To integrate *KNX* into *SmartSMILE*, the gateway exploits the API provided by the *Calimero 2* [38] libraries to connect to, capture and write *KNX* messages to and from the domotic bus. At startup time the gateway connects to the bus and initializes the required structures for translation of the data types and values used in *SmartSmileML* to *KNX Datapoint* identifiers and vice-versa. Then, the gateway loads the *ETS* (*KNX Engineering Tool*

Software) configuration file that contains information about different *KNX* devices connected to the *KNX* bus, such as their description, their application programs, and their functionalities. It then implements a listener on the *KNX* bus to manage events. Captured message are translated into *SmartSMILE Message* and can be of two types: a reply to a read request for a device state, or detection of an event that implies a device change of state that can trigger a composition of functions. To invoke functions, *SmartSMILE Message* are translated into *KNX* packages and written to the bus.

Table 1:Used Java Classes to implement gateways

Gateway	Java Classes
KNX	<i>KNX</i> <i>KNXListener</i> <i>KNXServiceMapping</i> <i>SSServiceData</i> <i>KNXServiceData</i> <i>SSParamterMapping</i> <i>KNXDriverException</i> <i>SSTypeValueXlator</i> <i>SSTypeValue</i>
UPnP	<i>UPnPManager</i> <i>UPnPManagerPoint</i> <i>UPnP2SmartSmile</i>
MyHome	<i>BTicino</i> <i>BTicinoDeviceData</i> <i>BTicinoDeviceManager</i> <i>BTicinoMsgsVerifier</i> <i>BticinoServiceData</i> <i>BticinoServiceManager</i> <i>BTicinoDeviceManager</i> <i>BTicinoDimensionValuesMapper</i> <i>SSServiceData</i>
SmartSmileML	<i>SmartSmileMLGateway</i>

To implement the gateway, 9 Java classes have been developed (Figure 10):

- *KNX*: this is the main class that acts as a communications bridge between *KNX* and *SmartSMILE*. It checks all the parameters of configuration files and establishes connections with the *KNX* bus via the *KNX/IP* gateway device. This makes it possible to read and write to the *KNX* bus. Moreover, it creates abstract instances of the *KNX* devices in *SmartSMILE* and maps them to the actual ones, so they can be used by the platform. The class also implements the reading and writing operations on the bus, and their conversion from *KNX* to *SmartSmileML* format and vice versa, including the values of the different data types.
- *KNXListener*: this class implements the functions and interactions with the *KNX* bus. It creates and manages the data flow to and from the *KNX* bus by providing: (a) synchronous reading of data (when the value of a datapoint is explicitly

requested through a group address); (b) asynchronous reading (the system furnishes the value of a datapoint through the group address without any explicit request, such as a thermostat that periodically reports the temperature, or notification of a user activating a device); (c) writing for activation of functions. Using the configuration data of *KNX* devices in *SmartSMILE*, it is possible to associate the correct coding/decoding type of data (*DTP*) to each *group address*.

- *KNXServiceMapping*: defines the mapping between the *KNX group address* and the associated *KNX* data type.
- *SSServiceData*: once both the *individual address* of the device and the corresponding *KNX group address* are known, this Java Class obtains the appropriate *SmartSMILE* function.
- *KNXServiceData*: takes as input the *SmartSMILE* function and finds both the *individual address* and the *KNX group address*.
- *SSParamterMapping*: represents the data structure that allows mapping a *SmartSMILE Message* to the available input and output parameters.
- *KNXDriverException*: defines the exceptions generated during interactions with *KNX*.
- *SSTypeValueXlator*: implements the functionalities to convert a *KNX* value into a *SmartSMILE* value and vice versa, according to the respective data types. By way of example: a) the *KNX* value "on" can be converted to a *SmartSMILE* "true" Boolean value; b) the *SmartSMILE* percentage scale has a range of 0 to 100, while in *KNX* it ranges from 0 to 255; it is thus necessary to convert the values between the two scales.
- *SSTypeValue*: contains information about *SmartSMILE* data types and their value ranges.

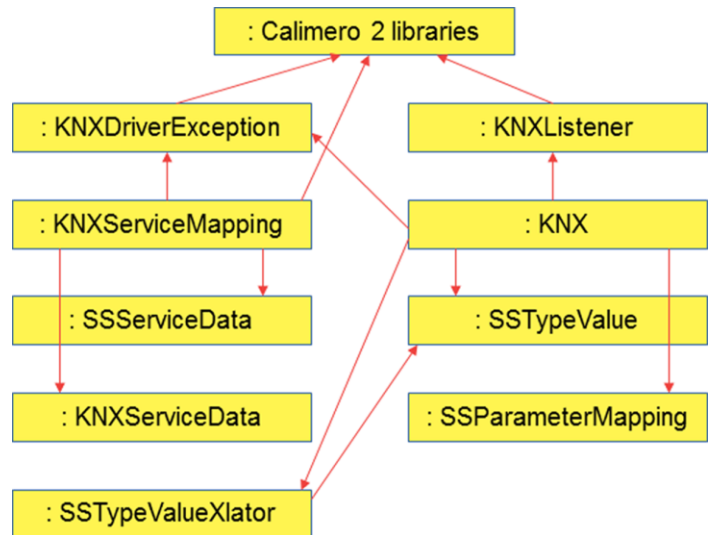


Figure 10: Developed classes for KNX gateway

When a function is invoked using the *SmartSMILE Message* formalism, the *KNX* class searches for the corresponding *KNX* service retrieved via the *KNXServiceMapping* class (using the *getKNXService* method). The value initially expressed in *SmartSMILE* format, is taken from the *KNXServiceData* class using the *GetValue* method. It is converted to the *KNX* value using the *SSTypeValueXlator* class with the *getKNXParameterValue*



method. The data are then written to the KNX bus using the *KNXListener* class. In the end, a reply indicating the execution of the command is sent back, once again using the *KNXServiceMapping* class (method *getSSService*) in order to generate confirmation of execution. (Figure 11).

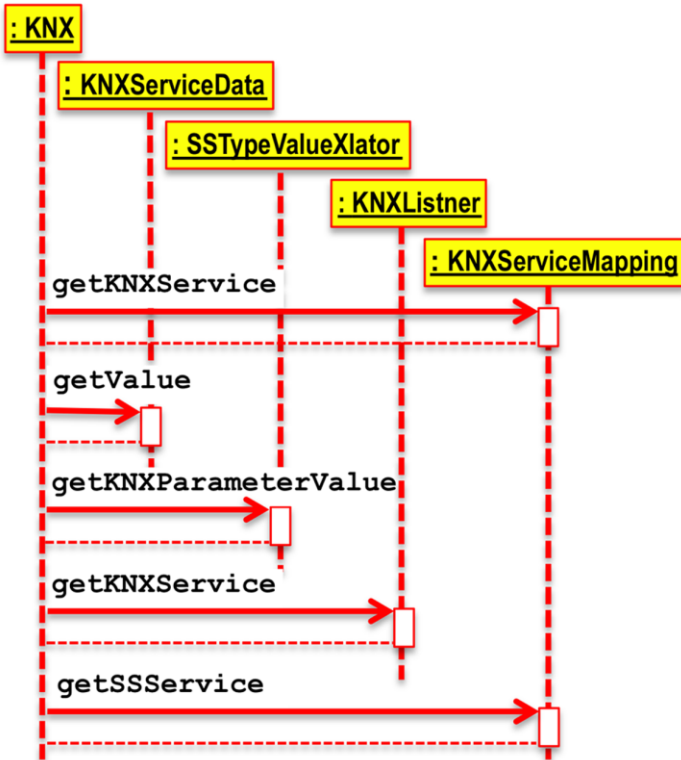


Figure 11: Write operation on KNX gateway

These operating principles of the *KNX Gateway* have also applied to the other gateways implemented in the project. In particular, regarding the development of the *UPnP* and *MyHome* Gateways.

6.2. UPnP gateway

To integrate *UPnP* technology, the gateway exploits the API provided by the *Cyberlink* and *Cidero* libraries [39]. At startup time, the gateway initializes the *ManagerPoint*, which is a *UPnP listener* that enables adding, removing and executing functions on devices. The gateway initializes the data structures for the translation from *SmartSmileML* to the corresponding *UPnP* values and types, and vice-versa. When a new device enters the *UPnP* network, it announces itself and provides a description of itself together with a list of functions that it can offer. This information is represented using *XML* structures that the *ManagerPoint* parses to create the *SmartSMILE Devices*.

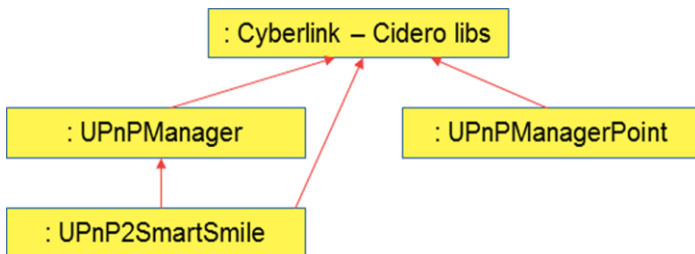


Figure 12: Developed classes for UPnP gateway

Three Java classes have been developed to implement the gateway (Figure 12):

- *UPnPManager*: this is the main class that acts as a communication bridge between *UPnP* and *SmartSMILE*. It checks all the parameters of configuration files and establishes interactive connections with *UPnP*. Moreover, it creates abstract instances of the *UPnP* devices in *SmartSMILE* and maps them to the actual ones. The class also implements the reading and writing operations on the *UPnP* bus and their conversion from *UPnP* to *SmartSmileML* format and vice versa, including the values of the different data types.
- *UPnPManagerPoint*: this class implements the functions of and interactions with *UPnP*. It creates and manages the data flow to and from the *UPnP* system by providing the synchronous and asynchronous functions for reading and writing to the bus.
- *UPnP2SmartSmile*: implements all the data structures and methods to convert descriptions, commands and values of *UPnP* into *SmartSmileML*, and vice-versa.

6.3. MyHome gateway

To integrate *MyHome*, the *btcommlib* [40] library was used, though modified to add the authentication functionalities offered by the *AndroidBetaOwnAuthentication* library. This library makes it possible to manage communications through an *OpenWebNet (OWN)* server by formatting messages according to the *OWN* syntax. It moreover serves to open sessions, creating special threads, and send and receive reply messages as well as syntactic and communication errors. At startup, the gateway opens communications with the *OpenWebNet* server that interfaces with the *MyHome* technology. The server works using two sessions: monitor and command. During the monitoring session the gateway starts a thread that remains in execution to asynchronously intercept the events that it reads from the bus. Messages are parsed by an *LL(1)* [41] grammar. During the command session, instead, the gateway establishes a connection with the server when it has to invoke a function. Unfortunately, auto discovery and auto configuration of *SmartSMILE Devices* is not available because the technology does not offer any device discover process. Hence, it is necessary to create the *SmartSMILE Devices* manually.

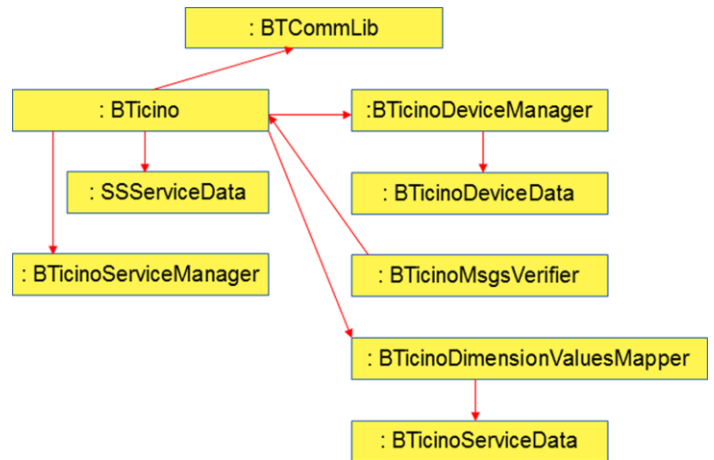


Figure 13: Deployed classes for MyHome gateway

To implement the gateway, 8 Java classes were developed (Figure 13):

- *BTicino*: this is the main class that manages devices and creates all the structures needed to interact with *MyHome* systems. It creates the two threads needed to interface with the monitoring and command sessions.
- *BTicinoDeviceData*: contains data and information related to a *BTicino* device for interactions.
- *BTicinoDeviceManager*: manages *BTicinoDeviceData*, organizing them in a Hash table.
- *BTicinoMsgsVerifier*: checks messages from the monitoring session.
- *BTicinoServiceData*: contains data and information related to *BTicino* messages.
- *BTicinoServiceManager*: organizes *BTicinoServiceData* in a Hash table.
- *BTicinoDimensionValuesMapper*: translates quantities from *SmartSmileML* to *OWN* and vice-versa.
- *SSServiceData*: contains data and information useful for executing a *SmartSmile Message*.

6.4. *SmartSmileML* gateway

In the Socialize project, *ZigBee* and *Bluetooth* technologies are only used to read physical quantities or detect state changes in a controlled system.

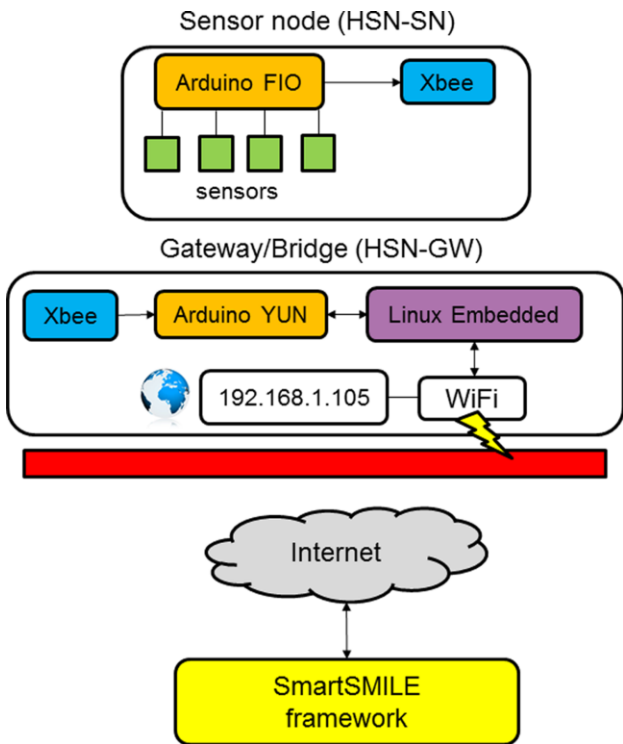


Figure 14: ZigBee architecture

The *ZigBee* architecture (Figure 14) used in the project is fully IEEE 802.15.4 and ZigBee 2007/PRO compliant. The transmitting protocol is ZigBee HA profile. It is composed by two main elements:

- *Smart node* (HSN-SN): this is a device made up of a sensor, an *XBee S2* radio module configured as a *ZigBee* router and a

node. The core of the node is an *Arduino FIO* board with one or more sensors connected to its I/O ports (input/output lines, either digital or analog). Each sensor node receives broadcast messages from the *coordinator* (bridge) and sends events only to the *coordinator* in a so-called *star* network topology. Events generated from sensor nodes are changes in the state of a sensor, power up or reset, low battery and heartbeat (a timed event indicating the node is alive).

- *Gateway/Bridge* (HSN-GW): a device made up of by an *Arduino Yun* board and a *Wireless SD* shield hosting an *XBee S2* radio module configured as a *ZigBee* coordinator for the wireless sensor network. Events from the smart nodes need to be forwarded to the Web service. This task is delegated to the *Linux* processor hosted on the *Arduino Yun* board and connected to the *LAN/WAN* via a *Wi-Fi* adapter. Event messages are then converted to *HTTP* requests (*RESTful API*) and sent to the service back-end.

A simple character-oriented communications protocol has been implemented on the smart node for bi-directional communication, network management and control of the input/output lines between smart nodes and the gateway/bridge. Events notification messages are forwarded directly, while the incoming commands require some tweaks on the server side. Although the communication protocol is able to manage bidirectional messages (from sensor node to gateway and vice versa), only one way is used (Figure 15).

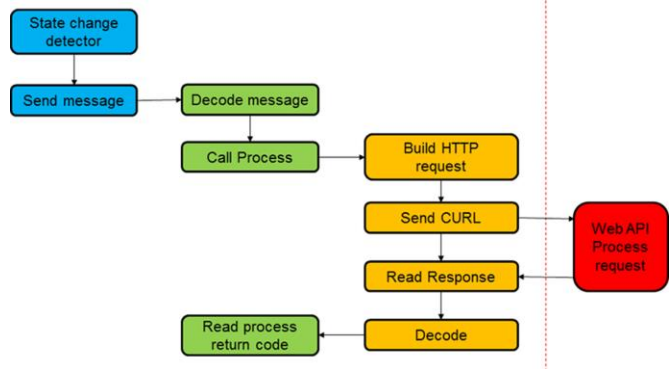


Figure 15: Wireless sensor node communication protocol

*Bluetooth* devices in the project are interfaced using an *Android Smartphone* app (Figure 16).

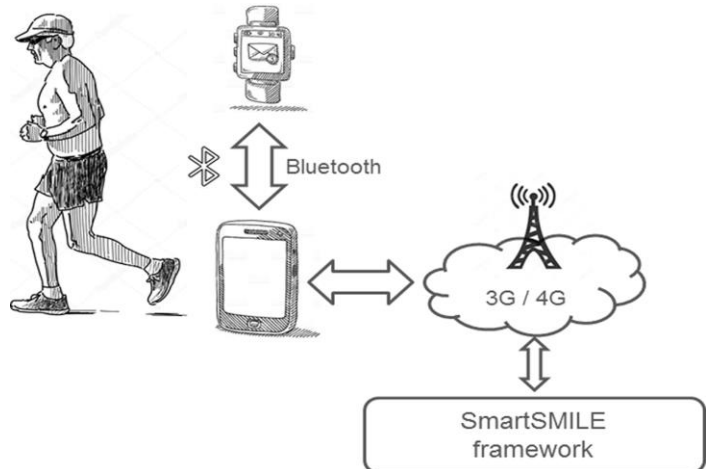


Figure 16: Bluetooth device connected to a Smartphone

Both the *ZigBee* Gateway and the *Android* app for *Bluetooth* are specifically designed to communicate through the *SmartSmileML* language. This provides *SmartSMILE* with a native *SmartSmileML* gateway, which has the task of setting up a connection as a *TCP* or *UDP* socket or a *REST* service to which devices can send messages. Incoming messages are directly forwarded to the *SmartSMILE* core for analysis by the *Friendship manager* and then forwarded on to the cloud server. Since this gateway does not require any special implementations to convert data, values and functions, it was sufficient to include all the features described in a single class called *SmartSmileMLGateway*.

In order to make devices able to ‘speak’ *SmartSMILEML*, device developers can refer to a document describing how *SmartSmileML* works and how to use it.

When a device becomes active, it sends a message in which it describes itself using a *SmartSMILE Device* description, as shown in Figure 5. In this case, the attribute *tech* is *SmartSMILE*. The *id* has been left blank because *SmartSMILE* will automatically fill it in. The assigned *id* will be used by the device for its communications. When the device is deactivated, it sends a special *SmartSMILE Message* of the type *REMOVE* containing its *id* (Figure 17).

```
<message id="90A2DAF501A4.ROOM105.NODE101"
messageType="REMOVE" />
```

Figure 17: SmartSMILE Message of type REMOVE

Leveraging the *IoT* capabilities of *SmartSMILE*, we ran a pre-test of the proposed system using remote devices during the development stage. A *SmartSMILE* server was deployed in ... with various devices employing *KNX*, *UPnP* and *MyHome* technologies, including a thermostat, motion detectors, gas and smoke detectors, electrical load control of instantaneous consumption, power actuators, a cooking gas electromagnetic valve and smart TV. All the appliances and devices are part of a demonstration installation that simulates an actual home. *ZigBee* environmental sensors, including temperature and humidity, were fitted at the *SUPSI University* in Switzerland in *Manno*. A *Bluetooth* Smartwatch able to capture users’ heart rates, number of steps and sleep duration was set up at *Spring Techno* in *Bremen Germany* (Figure 18).



Figure 18: Smartwatch and ZigBee sensors

### 7. Field trials

The test and validation processes of the *SOCIALIZE* platform were performed by the end-user partners in the project.

In Switzerland it has been tested in a retirement home, while the Italian test involved two regions (Tuscany and Sicily), making

sure in each case to involve different types of target users in the test:

- Care-dependent elderly people in residential facilities;
- Partially autonomous elderly people assisted at their own residence/homes;
- Autonomous elders who are not beneficiaries of social care or healthcare assistance and participate in associational activities.

Regarding the elderly monitoring service, the test was conducted inside a residential facility in Tuscany. The aim was to collect data from sensors and ensure that they were understandable, and that they were able to constantly follow and track the evolution of those parameters deemed significant for the health and safety of the older persons involved.

A technologically enriched environment was recreated in this residence by assembling and recreating within the pilot site the same *IoT* device configuration already used in the earlier design stage.

The testing period was two weeks. *SmartSMILE* was installed on a computer located inside the residence and connected to the Internet through an *ADSL* connection.

The devices installed were (Table 2): a wireless ambient temperature and humidity sensor in the cafeteria (*ZigBee* technology), a temperature and humidity sensor as well as a SmartTV and Media Server (*UPnP* technology) in the dining room, two PIR wired presence sensors, one in a bedroom and one in the kitchen, which was also equipped with gas electrovalve actuator, push button, gas, water, smoke sensors (*KNX* technology) and electrical load control (*MyHome* technology), and finally two SmartWatches worn respectively by two guests (*Bluetooth* technology). Almost all *IoT* devices used are powered by a mains power source, only the *ZigBee* temperature and humidity monitoring devices could have a battery life problem.

Table 2: Devices in field trials

Device	Technology	Location
Ambient temperature and humidity sensor	ZigBee: wireless bus with plug and play feature. Battery power supply	Cafeteria Dining room
Smart TV and Media Server	UPnP: wireless WiFi bus. Mains electricity supply	Dining room
PIR presence sensor	KNX: wired bus. Mains electricity supply	Bedroom Kitchen
Gas, water and smoke sensors Gas electrovalve and push button Power actuator	KNX: wired bus. Mains electricity supply	Kitchen
Electrical load control	BTicino: Wired bus. Mains electricity supply	Kitchen
Smartwatches	Bluetooth: wireless bus. Rechargeable battery power supply	Wearable device

They have 2 AA (LR-03) batteries and their measured energy consumption is 35mA in transmission and 2.1uA in sleep mode. The run time is 1 year based on sending data per 20 min. Both *SmartSMILE* framework and the corresponding gateways to manage the domotic technologies run on a *Raspberry Pi 3 Model B+* [42].

The data collected by these heterogeneous home automation devices was converted, standardized and normalized by *SmartSMILE*. The data were then sent to a database managed in Cloud Computing mode residing at the Digimat company, in Matera, Italy.

The results of the experimentation made it possible to verify the correct functioning of the entire system. In particular, through the use of dedicated Web interfaces it was verified that data were stored correctly. These interfaces have enabled simple, intuitive aggregation of the data over fixed periods of time and their display in clear, easily understandable graphics.

In fact, the information is displayed as simply as possible, with icons corresponding to the requested service (for example Physical Activity or Heart Rate monitoring). The end user needs only click the corresponding icon to show a graphical representation of the acquired data with the possibility to adjust the timeframe.

The proper functioning of the collaboration and interoperability between the devices has also been verified, as these features are necessary for the implementation of a *SIoT* based on the *SmartSMILE* infrastructure.

The tested monitoring activities included:

- Temperature control inside the home environment. This has led to the discovery that people who tend to keep the room temperature either too hot or too cold are subject to falling ill more frequently;
- Supervision of elderly people who do not get enough physical activity with respect to doctors' recommendations;
- The feeling of safety older people experiences with regard to the hazards of fire, flooding and gas leaks that may occur within the environment.

The strength of the *SIoT*-ready infrastructure is highlighted by the following composite functions:

- Following the voluntary provocation of conditions of flooding, gas leaks and smoke in the kitchen using dedicated *KNX* devices (Figure 19), when a hazardous event was recognized, the corresponding alarm signals from the *UPnP* media server were promptly displayed on the television, together with the simultaneous activation of an acoustic alarm.
- When one or more appliances requiring high power consumption were turned on at the same time (specifically the microwave oven, the traditional oven, the boiler and the washing machine), the electrical load monitoring system of detected an overload. Power actuators were deactivated according to a preset priority until the situation returned to normal. When the load reduced because one of the still functioning household appliances finished, the load control detected this change and reactivated the appliances that were previously stopped. The functionalities were implemented using *MyHome* electrical load control of instantaneous

consumption combined with *KNX* power actuators (Figure 20);



Figure 19: Gas, smoke and UPnP devices

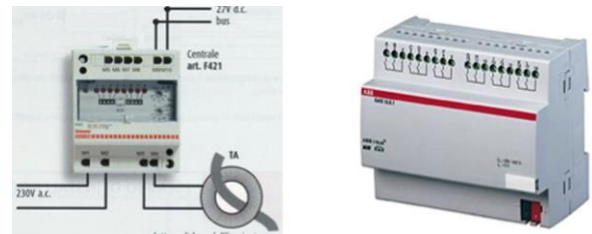


Figure 20: Electrical load control and power actuator

- Switching on the cooking gas requires pressing a button. After a pre-set period of time, an acoustic and luminous alert was activated, and an appropriate message displayed on the TV to remind the user that to continue cooking the button had to be pressed again. This prevented the user forgetting food on the cooker. The combined timer and smart TV functionalities were composed using the *KNX* electromagnetic cooking gas valve (Figure 21).



Figure 21: Gas electrovalve and push button

The most significant anomalies identified were long periods of no information coming from both *SmartWatches*. For the first incident, the reason was that the person took off the watch for 5 nights consecutively, while the second was due to the fact that twice (3 hours and 5.5 hours, respectively) the other person did not notice that the device was no longer working because the battery needed recharging.

## 8. Conclusions

The paper presented *SmartSmile*, a framework that solves the main issues so that *SIoT* paradigms can find actual application. This software infrastructure was developed as an activity of the *Socialize* project, to address the problem of monitoring older

people within the living environment.

Thanks to the potential of *SmartSmileML language*, the framework implements an abstraction layer that hides the underlying, often proprietary technologies, of the integrated devices, leveling them out. In addition, *SmartSmileML* defines a strategy to define the "friendship" relation between devices permitting the sharing of information amongst them even if they are not natively interoperable. On the one hand, *SmartSmile* permits to users to choose the most suitable sensors/actuators for the specific case without concern for their compatibility with the devices or systems already installed and, on the other hand, it provides developers with a unique representation of the acquired data without the need to know the technical details of each single technology.

Summarizing, the most significant features that have allowed the creation of a *SIoT* environment supporting the services of device discovery, combination of device functions and reliability, are:

- Interoperability: the ability of the devices to interoperate with each other even if they belong to natively incompatible home automation systems, thereby permitting full interconnection and interaction amongst them.
- Service-to-service communications: the service provided via a device can share its input and output with the services of other "friends" to achieve a common objective.
- Scalability: in order to attain a certain goal, devices can collaborate with each other; moreover, when changes occur (new devices become available or some are missing), tasks can be re-distributed.

As a future work, *SmartSMILE* will allow to expose its own devices externally. Exploiting the results of the work described in [43], every device within the system will be reachable using an *IPv6* address, and socialization will be achieved between devices belonging to different *SmartSMILE* instances. In addition, the stored data could be made available to special machine learning algorithms that could launch alarms automatically, learning the user's habits.

*SmartSMILE* is released under the *GPL licence* [44]. Its code is shared on GitHub [45].

### Conflict of Interest

The authors declare no conflict of interest.

### Acknowledgment

The *SOCIALIZE* project has been financed by the *European Commission* through the *Ambient Assisted Living Joint Programme* (AAL JP).

### References

[1] V. Miori, D. Russo, "Improving life quality for the elderly through the Social Internet of Things (SIoT)" in *IEEE Global Internet of Things Summit (GIoTS)*, 1-6, 2017. <https://doi.org/10.1109/GIOTS.2017.8016215>

[2] A. Börsch-Supan, M. Brandt, C. Hunkler, T. Kneip, "Data resource profile: the Survey of Health, Ageing and Retirement in Europe (SHARE)" *International Journal of Epidemiology*, 2013, <https://doi.org/10.1093/ije/dyt088>

[3] A. Hofman, D. E. Grobbee, P. De Jong, F. A. Van den Ouweland, "Determinants of disease and disability in the elderly: the Rotterdam Elderly

Study" *European journal of epidemiology* 7.4, 1991. 403-422. <https://doi.org/10.1007/BF00145007>

[4] Kaare Christensen, Gabriele Doblhammer, Roland Rau, James W Vaupel, "Ageing populations: the challenges ahead", *The Lancet*, 374(9696), 2009. [https://doi.org/10.1016/S0140-6736\(09\)61460-4](https://doi.org/10.1016/S0140-6736(09)61460-4).

[5] World Health Organization, *World report on ageing and health*, ISBN: 978 92 4 156504 2, 2015.

[6] M. Sánchez-Valle, M. Vinarás Abad, C. Llorente-Barroso, "Empowering the Elderly and Promoting Active Ageing Through the Internet: The Benefit of e-inclusion Programmes" *Safe at Home with Assistive Technology*, Springer, Cham, 95-108, 2017. [https://doi.org/10.1007/978-3-319-42890-1\\_7](https://doi.org/10.1007/978-3-319-42890-1_7)

[7] J. Gubbi, R. Buyya, S. Marusic, M. Palaniswami, "Internet of Things (IoT): A vision, architectural elements, and future directions" *Future Generation Computer Systems*, Volume 29, Issue 7, 1645-1660, 2013. <http://dx.doi.org/10.1016/j.future.2013.01.010>.

[8] C. Christophorou, S. Kleanthous, D. Georgiadis, D. M. Cereghetti, P. Andreou, C. Wings, E. Christodoulou, G. Samaras, "ICT services for active ageing and independent living: identification and assessment" *Healthcare technology letters*, 3.3: 159, 2016. <https://doi.org/10.1049/htl.2016.0031>

[9] V. Miori, D. Russo, "Preventing Health Emergencies in An Unobtrusive Way", *Internet of Things. User-Centric IoT*. Springer, Cham, 242-247, 2015. [https://doi.org/10.1007/978-3-319-19656-5\\_35](https://doi.org/10.1007/978-3-319-19656-5_35)

[10] L. Atzori, A. Iera, G. Morabito, M. Nitti, "The social internet of things (siot)-when social networks meet the internet of things: Concept, architecture and network characterization" *Computer Networks* 56(16), 3594-3608, 2012. <https://doi.org/10.1016/j.comnet.2012.07.010>

[11] L. Atzori, A. Iera, G. Morabito, "From "smart objects" to "social objects": The next evolutionary step of the internet of things" *Communications Magazine*, IEEE 52.1, 97-105, 2014. <https://doi.org/10.1109/MCOM.2014.6710070>

[12] <http://www.socialize-project.eu/>

[13] V. Miori, D. Russo, "Domotic Evolution towards the IoT" in 28th International Conference on Advanced Information Networking and Applications Workshops (WAINA 2014), Victoria, Canada, 809-814, 2014. <https://doi.org/10.1109/WAINA.2014.128>

[14] British Standards Institute, *Industrial Automation Systems – Concepts and Rules for Enterprise Models*, BS ISO 14258, London: British Standards Institute, 1998

[15] M. Ganzha, M. Paprzycki, W. Pawlowski, P. Szmaja, K. Wasielewska, "Semantic Technologies for the IoT - An Inter-IoT Perspective" in *IEEE First International Conference on Internet-of-Things Design and Implementation (IoTDD)*, Berlin Germany, 271-276, 2016. <https://doi.org/10.1109/IoTDI.2015.22>

[16] A. Broering, S. Schmid, C. K. Schindhelm, A. Khelil, S. Kaebisch, D. Kramer, D. Le Phouc, J. Mitic, D. Anicic, E. Teniente, "Enabling IoT Ecosystems through Platform Interoperability" *IEEE Software*, vol. 34, no. 1, 54-61, 2017. <https://doi.org/10.1109/MS.2017.2>

[17] S. Kubler, J. Robert, A. Hefnawy, K. Främling, C. Cherifi, A. Bouras, "Open IoT Ecosystem for Sporting Event Management," *IEEE Access*, vol. 5, 7064-7079, 2017. <https://doi.org/10.1109/ACCESS.2017.2692247>

[18] S. Soursos, I. Podnar Zarko "symbIoTe: Symbiosis of Smart Objects Across IoT Environments, in *Digitising the Industry*" *Internet of Things Connecting the Physical, Digital and Virtual Worlds*, IERC Cluster Book, 303-307, 2016. <https://doi.org/10.1109/EuCNC.2016.7561070>

[19] Y. Guan, J. C. Vasquez, J. M. Guerrero, "An open virtual neighbourhood network to connect IoT infrastructures and smart objects — Vicinity: IoT enables interoperability as a service" in *Global Internet of Things Summit (GIoTS)*, Geneva Switzerland, 1-6, 2017. <https://doi.org/10.1109/GIOTS.2017.8016233>

[20] S. Kubler, J. Robert, A. Hefnawy, C. Cherifi, A. Bouras, K. Främling, "IoT-based Smart Parking System for Sporting Event Management" in *13th International Conference on Mobile and Ubiquitous Systems: Computing, Networking and Services (MOBIQUITOUS 2016)*, ACM, New York USA, 104-114, 2016. <https://doi.org/10.1145/2994374.2994390>

[21] J. H. Abawajy, M. M. Hassan, "Federated internet of things and cloud computing pervasive patient health monitoring system" *IEEE Communications Magazine*, 55(1), 48-53, 2017. <https://doi.org/10.1109/MCOM.2017.1600374CM>

[22] P. Kakria, N. K. Tripathi, P. Kitipawang, "A real-time health monitoring system for remote cardiac patients using smartphone and wearable sensors" *International journal of telemedicine and applications*, 8-19, 2015. <https://doi.org/10.1155/2015/373474>

[23] S. Coradeschi, A. Cesta, G. Cortellessa, L. Coraci, C. Galindo, J. Gonzalez, L. Karlsson, A. Forsberg, S. Frennert, F. Furfari, et al., "GiraffPlus: a system for monitoring activities and physiological parameters and promoting social

- interaction for elderly" *Human-Computer Systems Interaction: Backgrounds and Applications* 3, Springer, Cham, 261-271, 2014. [https://doi.org/10.1007/978-3-319-08491-6\\_22](https://doi.org/10.1007/978-3-319-08491-6_22)
- [24] M. S. Shahamabadi, B. B. M. Ali, P. Varahram, and A. J. Jara, "A Network Mobility Solution Based on 6LoWPAN Hospital Wireless Sensor Network (NEMO-HWSN)" in *Seventh International Conference on Innovative Mobile and Internet Services in Ubiquitous Computing*, Taichung Taiwan, 433-438, 2013. <https://doi.org/10.1109/IMIS.2013.157A>
- [25] A. Dohr, R. Modre-Oprian, M. Drobics, D. Hayn, G. Schreier, "The Internet of Things for ambient assisted living" in *7th International Conference on Information Technology: New Generations (ITNG 2010)*, Las Vegas USA, 804-809, 2010. <https://doi.org/10.1109/ITNG.2010.104>
- [26] F. Goncalves, J. Macedo, M. J. Nicolau, A. Santos, "Security architecture for mobile e-health applications in medication control" in *21th International Conference on Software, Telecommunications and Computer Networks (SoftCOM 2013)*, Split - Primosten Croatia, 1-8, 2013, <https://doi.org/10.1109/SoftCOM.2013.6671901>
- [27] L. Nie, T. Li, M. Akbari, J. Shen, T. Chua, "Wenzher: Comprehensive vertical search for healthcare domain" in *ACM SIGIR Conf. Res. Develop. Inf. Retrieval*, Gold Coast Australia, 1245-1246, 2014. <https://doi.org/10.1145/2600428.2611176>
- [28] H. Takeuchi, N. Kodama, "Validity of association rules extracted by healthcare-data-mining" in *IEEE 36th Annu. Int. Conf. EMBC*, Chicago USA, 4960-4963, 2014. <https://doi.org/10.1109/EMBC.2014.6944737>
- [29] A. M. Ortiz, D. Hussein, S. Park, "The cluster between internet of things and social networks: Review and research challenges" *IEEE Internet of Things Journal*, 1.3, 206-215, 2014. <https://doi.org/10.1109/JIOT.2014.2318835>
- [30] T. Y. Chung, I. Mashal, O. Alsaryrah, V. Huy, W. H. Kuo, D. P. Agrawal, "Social Web of Things: A Survey" in *International Conference on Parallel and Distributed Systems (ICPADS)*, Seoul South Korea, 570-575, 2013. <https://doi.org/10.1109/ICPADS.2013.102>
- [31] H. Lee, J. Kwon, "Survey and Analysis of Information Sharing in Social IoT" in *8th International Conference on Disaster Recovery and Business Continuity (DRBC)*, Jeju South Korea, 15-18, 2015. <https://doi.org/10.1109/DRBC.2015.13>
- [32] L. E. Holmquist, F. Mattern, B. Schiele, P. Alahutha, M. Beigl, H. Gallersen, "Smart-its friends: a technique for users to easily establish connections between smart artefacts" in *ACM UbiComp'01*, Atlanta USA, 2001. [https://doi.org/10.1007/3-540-45427-6\\_10](https://doi.org/10.1007/3-540-45427-6_10)
- [33] S. D. Bruyne, "Finding your way around the KNX Specifications" in *KNX Technology Tutorial Workshop*, Deggendorf Germany, 2004.
- [34] B. A. Miller, T. Nixon, C. Tai, M. D Wood, "Home networking with Universal Plug and Play" *IEEE Communications Magazine*, vol. 39, no. 12, 104-109, 2001. <https://doi.org/10.1109/35.968819>
- [35] <https://www.knx.org/knx-en/software/ets/about/index.php>
- [36] <http://www.bticino.com/solutions/home-automation/>
- [37] J. S. Lee, Y. W. Su, C. C. Shen, "A Comparative Study of Wireless Protocols: Bluetooth, UWB, ZigBee, and Wi-Fi" in *IECON 2007 - 33rd Annual Conference of the IEEE Industrial Electronics Society*, Taipei Taiwan, 46-51, 2007. <https://doi.org/10.1109/IECON.2007.4460126>
- [38] B. Malinowsky, G. Neugschwandtner, and W. Kastner, "Calimero: Next Generation", in *Konnex Scientific Conference*, 2007.
- [39] A. Bobek, H. Bohn, F. Golasowski, G. Kachel, A. Spreen, "Enabling workflow in UPnP networks" in *INDIN'05 3rd IEEE International Conference Industrial Informatics*, 166-171, 2005. <https://doi.org/10.1109/INDIN.2005.1560370>
- [40] <https://www.myopen-legrandgroup.com>
- [41] A. V. Aho, M. S. Lam, R. Sethi, J. D. Ullman, *Compilers: Principles, Techniques, and Tools* (2nd Edition), Addison-Wesley Longman Publishing Co. Inc., 2006.
- [42] <https://www.raspberrypi.org/products/raspberry-pi-3-model-b-plus/>
- [43] V. Miori, D. Russo "Home automation devices belong to the IoT world" *ERCIM News*, 101, Special theme: The Internet of Things and the Web of Things, ERCIM, 22 - 23, 2015.
- [44] A. G. González, *GNU General Public License v3: A Legal Analysis* SCRIPT-ed, 155-163, 2006
- [45] <https://github.com/darioxrusso/smartSMILE>