


Article

An HBIM Approach for Structural Diagnosis and Intervention Design in Heritage Constructions: The Case of the Certosa di Pisa

Anna De Falco ^{1,*} , Francesca Gaglio ², Francesca Giuliani ¹ , Massimiliano Martino ¹  and Vincenzo Messina ¹

¹ Department of Civil and Industrial Engineering, University of Pisa, 56126 Pisa, Italy; francesca.giuliani@ing.unipi.it (F.G.); m.martino@ing.unipi.it (M.M.); vincenzomessina@consorziofabre.it (V.M.)

² Department of Energy, Systems Territory and Construction Engineering, University of Pisa, 56126 Pisa, Italy; f.gaglio@hotmail.it

* Correspondence: anna.de.falco@unipi.it; Tel.: +39-050-2218211

Abstract: In the conservation of monumental heritage, the collection and utilization of information are of primary importance. The Heritage Building Information Modeling (HBIM) procedure harnesses the potential of three-dimensional models, offering significant advantages in accessing documentation, interoperability, multidimensionality of intervention design, cost evaluation, and maintenance management. Our attention here is focused on the Certosa di Pisa (Italy), a large historical complex built in the 14th century as a monastery of the Carthusian Order, currently in a state of deterioration and in need of restoration and re-functionalization. The multifaceted nature of this monumental complex, with its intricate interplay of architectural elements spanning different historical periods and featuring diverse techniques, poses a significant challenge for structural safety assessment. This case study presents an opportunity to explore an HBIM approach to streamline the diagnostic process and facilitate the intervention design phase. The goal is achieved by utilizing an accurate 3D model enriched with data from multiple sources and automating certain operations for a simplified safety assessment of masonry structures under both gravity and seismic loads. The usefulness of the HBIM methodology is highlighted as a valuable tool in the realm of cultural heritage structures for both practitioners and scholars alike.

Keywords: Certosa di Pisa; architectural heritage; HBIM; 3D modeling; safety assessment



Citation: De Falco, A.; Gaglio, F.; Giuliani, F.; Martino, M.; Messina, V. An HBIM Approach for Structural Diagnosis and Intervention Design in Heritage Constructions: The Case of the Certosa di Pisa. *Heritage* **2024**, *7*, 1850–1869. <https://doi.org/10.3390/heritage7040088>

Academic Editors: Michele Betti, Giovanni Castellazzi and Francesco Clementi

Received: 18 February 2024
Revised: 18 March 2024
Accepted: 19 March 2024
Published: 22 March 2024



Copyright: © 2024 by the authors. Licensee MDPI, Basel, Switzerland. This article is an open access article distributed under the terms and conditions of the Creative Commons Attribution (CC BY) license (<https://creativecommons.org/licenses/by/4.0/>).

1. Introduction

In recent decades, significant progress has been made in the field of two- and three-dimensional digital representation, enabling the acquisition of precise models for documenting existing architectural heritage. The generation of 3D models can be achieved through various techniques, including solid modeling, which can be handled directly or parametrically controlled, as well as meshes created through triangulation of point cloud coordinates [1]. These different techniques are typically used in combination, as none of them individually can guarantee high levels of accuracy, automation, realism, and model manipulation capabilities while ensuring cost- and time-efficiency for surveying and processing [2]. There are many examples showing the application of these techniques in the field of cultural heritage, facilitating the high-resolution reproduction of historical structures and objects, as well as the development of integrated interfaces for the documentation and presentation of multimedia content [3].

Contemporary systems allow not only representation, but also the possibility of enriching 3D models with additional information, thus enabling the creation of ontological models [4,5]. However, when it comes to historical buildings, more research efforts are needed to effectively manage the numerous and diverse information regarding the construction history, transformations, materials, and state of conservation. A potential solution

to address these challenges is provided by Building Information Modeling (BIM) systems. BIM does not refer to a specific object (namely, the 3D model) or software, but rather denotes a collaborative process for producing and managing structured digital information. The goal is to create a shared database that goes beyond traditional representations, constituting a semantically enriched model that centralizes the collection and exchange of information between stakeholders throughout the entire life cycle of construction [6].

The application of the BIM process in the context of heritage buildings is known as Heritage or Historical BIM (HBIM) [7]. HBIM involves modeling building elements as objects in a database library and processing large amounts of data from various sources. While BIM is well established in the new construction sector, its use in historical building contexts is relatively new but is progressively expanding due to its significant advantages, such as quick access to documentation, interoperability in the analysis, multidimensionality in the design phase, ease of cost assessment at each stage, and improved management of maintenance and interventions. In fact, having an informed digital model of the building enables experts to have a comprehensive view that works as a starting point to identify structural and conservation deficiencies and to simulate different scenarios of intervention. Review papers [8,9] illustrate the increasing interest in HBIM among researchers.

Unlike the BIM process, which commonly leverages the combination of elements chosen from a library usually already possessing information, HBIM implies the creation of a model of the construction, with which data are subsequently associated. The HBIM process primarily involves a reverse-engineering operation that transforms survey data into a digital representation of the structure. This process generally consists of three stages: information acquisition, which entails surveying the geometry and relevant features; information processing, which involves creating the actual proprietary model; and data fusion, which incorporates additional information into the model. During this final stage, the potential of the HBIM process for information management in historical architecture becomes evident. The model can systematically incorporate both quantitative and qualitative data, allowing for easy extraction when needed. Furthermore, the ability to accommodate diverse data types and sources promotes collaboration among professionals working on the same asset in different capacities. A comprehensive and well-organized catalog of gathered data can play a vital role in different aspects of building restoration and management, offering valuable assistance, especially during operational phases [10]. This information often spans various disciplinary domains, and correlating diverse datasets can streamline the generation of analyses. Furthermore, the potential exists to employ a dynamic model that remains continually updatable and expandable, fostering collaboration among professionals in different roles [11]. The utilization of semantically enriched 3D elements enables navigation through the model, accompanied by data such as photographs, links, descriptions, and 2D drawings. Additionally, querying the model facilitates the creation of thematic maps [12]. This comprehensive approach serves as an effective solution for synthesizing, organizing, and storing information, which is essential for knowledge acquisition and decision-making in conservation projects. In this interdisciplinary setting, HBIM methodologies emerge as a promising and efficient tool for the preservation of historical assets [13]. They provide an effective approach to understanding, preserving, and restoring historical architecture, with the potential for centralized management of all documentation. In recent years, some experiments have been conducted in this regard [14–17]. Works have demonstrated the advantages of applying the method to complex and multilayered historical buildings, highlighting the transformations caused by restoration work. In [18], an application for studying the architectural history and conservation status of the Cathedral of St. John the Theologian in Nicosia, Cyprus, is presented, while Ref. [15] focuses on managing non-geometric information in HBIM and translating the traditional conservation procedure in the interesting case of the Cathedral of Parma (Italy).

The HBIM method has recently been used for preventive conservation [19,20], restoration project development, and structural analysis [19,21] of ancient constructions of various types and materials. Among these, we can mention its application to the ancient Library of

Salamanca (Spain) for preventive conservation [19], the cloister of Saint-Guilhem-le-Désert (France) [22], and the Four Courts Palace (Ireland) [23] for surveying and representation of architectural heritage. In [24], HBIM was used for collecting and organizing data related to the degradation of existing timber structures; more generally, in [25], the main literature contributions using HBIM for managing data from diagnostic activities and monitoring of existing structures and infrastructure are reported. Similarly, in [26], HBIM was applied for the control and monitoring of the structural safety of the ancient metal bridge O Barqueiro in Galicia (Spain).

Some attempts have aimed to integrate safety assessment into HBIM, using the model as the basis for evaluating the structural performance of the construction. In [27], the algorithm E-PUSH, a computational method to assess the vulnerability of existing masonry buildings [28], was implemented in connection with the BIM model via Grasshopper [29].

Finally, in [30] and [31], the digital representation of the built environment and the management of documentation are addressed, respectively, aiming for better utilization of BIM projects through the use of portable tools and the creation of as-built projects for structures and infrastructure.

The capabilities of integrating HBIM with GIS have also been explored [9], leveraging the strengths of this powerful tool that serves various purposes in geographic and urban contexts, including risk control, planning, analysis, and visualization [32].

For a comprehensive overview of the current state of HBIM implementation and research trends, Ref. [33] provides a valuable review of the existing literature, and Ref. [34] reports an analysis of the scientific literature, with insight into the growing number of experiments conducted by scholars in the field of heritage buildings.

At present, numerous BIM platforms are employed by professionals for tasks such as modeling, visualizing, assembling, and managing architectural heritage knowledge. However, despite the increasing applications of BIM technologies in HBIM workflows, the discipline still lacks a standardized approach to HBIM's implementation. This limitation restricts the application of BIM technology and hinders the realization of associated benefits in the research and preservation of historical structures.

The present work is part of a preliminary study carried out by a multidisciplinary group of experts from the University of Pisa to evaluate the structural safety of the Certosa di Pisa (Italy), a monastery of the Carthusian Order established in the 14th century. The monumental complex, currently in a state of severe deterioration, needs restoration and re-functionalization. This study, focused on the southwestern section of the Certosa, offers the opportunity to explore the application of the BIM methodology. Emphasis is placed on the structural aspects, which require specific strategies to automate some operations for the safety assessment of the historical and artistic structures in a seismic-activity-prone area. The objective of this work is to find a methodology for synthesizing and organizing information to identify critical issues, plan the necessary interventions, and evaluate their technical feasibility. A procedural framework is established for carrying out the structural analyses through an operational process that can be easily extended to the entire monumental complex. This article outlines the fundamental phases of the realization of the model and highlights the characteristics that make it a valid tool in the knowledge acquisition phase and in the planning of rehabilitation and restoration interventions.

2. Materials and Methods

2.1. The Certosa di Pisa

The Certosa di Pisa is a large historical complex located in the Municipality of Calci, a small town near Pisa. In the Val Graziosa, on the slopes of Monte Pisano amidst olive and cypress trees (Figure 1), the Certosa was originally established in 1366 as a monastery of the Carthusian Order of San Bruno [35]. It underwent significant enlargement between the 17th and 18th centuries, resulting in its current Late Baroque appearance (Figure 1). Currently, the site is partially used by the University of Pisa, managing the Museum of

Natural History, and partially by the Ministry of Culture, overseeing the National Museum of the Monumental Charterhouse of Calci.



Figure 1. The Certosa di Pisa: aerial view.

The complex comprises multiple buildings, each serving specific functions (Figure 2). The western façade houses a building aggregate known as Case Basse, which spans approximately 150 m and consists of two aboveground stories. This structure hosted various services for the charterhouse, including the pharmacy, San Sebastiano Chapel, and the parlor, which were accessible to residents as well. In front of the Case Basse there is the actual cloistered monastery, an imposing three-story edifice with the main façade facing west, separated from the Case Basse by a large green area called Corte d'Onore. At the center of the complex there is the church, originally built for the exclusive use of the monks. The church features a grand double-ramp staircase, a magnificent façade covered in white marble and decorated on the tympanum by a statue of the Assumption surrounded by angels (Figure 2).

Next to the church there are the sacristy, the chapels, the chapter house, the lodgings for the lay brothers, and the buildings dedicated to rural activities. At the rear of the church there is the Great Cloister (Chiostrò Grande), lined with the fifteen cells of the monks (Celle dei Padri), as well as the worship rooms, the refectory, and the chapter house. Other cloisters in the southwestern portion are the Chapter House Cloister (Chiostrò del Capitolo), overlooked by the chapel, and the Granduca (or Foresteria) Cloister (Chiostrò del Granduca o della Foresteria), surrounded by the dwellings of the lay brothers.

By around 1390, essential spaces for Carthusian life had been completed, including the church with several chapels, the chapter house, a portion of the monks' cells in the Great Cloister, the cells for the lay brothers, the refectory, and the kitchens [36,37]. In the second half of the 14th century, there was a primarily decorative activity, which came to a halt at the end of the 15th century, when the monastery experienced a period of economic hardship due to renewed tensions between Pisa and Florence. In the early 17th century, a significant renovation phase ensued, involving modifications and expansions of the rooms around the Granduca Cloister, along with the addition of new cells in the Great Cloister. In this period, alterations were also made to the Case Basse, and a new entrance was created in line with the church.

The final significant construction phase that shaped the current appearance of the Certosa di Pisa took place in 1764. In this period, the Corte d'Onore was nearly doubled in size, a bell tower was erected (which remained unfinished), and a large granary was built in the northern area of the complex. However, starting from 1809, the Carthusian community had to face increasingly unfavorable political and economic circumstances, which led to

a deep crisis and the near cessation of building activities. Following the suppression of religious orders by Napoleon Bonaparte, the Certosa lost all of its properties, and the monks were compelled to leave.



Figure 2. Intended uses in the 18th century layout of the Certosa, with indication of the study area.

After the restoration of ecclesiastical communities by Leopold II, the Carthusians returned as secular monks, and some restoration work was carried out. However, after the definitive suppression of religious orders upon the establishment of the Kingdom of Italy, all assets were transferred to the State Property. Fortunately, the law recognized the immense value of the monastic complex, declaring it to be of monumental importance. This fact contributed to the preservation of the Certosa di Pisa from alterations by private individuals, unlike what happened to other Italian Carthusian monasteries.

In 1869, a portion of the southern area was entrusted to the Royal Conservatory of Sant'Anna, resulting in some transformations that were later reversed. From 1871, for almost a century, the monks were allowed to remain in the monastery but were compelled to share the space with other institutions. In 1888, the Carthusian monastery temporarily served as an artillery unit, and in 1915 the non-monastic portion was used as a barracks, followed in 1916 by a reserve hospital and from 1917 to 1919 by a hospital for prisoners of war of the Austro-Hungarian army. In 1972, the last monks definitively left the Carthusian hermitage, which in 1979 was partially assigned to the University of Pisa and transformed into a museum. Currently, the complex is managed jointly by the University of Pisa, which occupies most of the rooms in the northern section as the Museum of Natural History, and by the Ministry of Culture, with the National Museum of the Monumental Certosa di Calci, which occupies most of the rooms in the southern section. The cells of the monks are managed by both administrations: the northern cells are managed by the Ministry of Culture, and the southern ones by the University of Pisa. The ground floor and the second floor of the monastery are mainly used as exhibition spaces that are open to the public, with some areas intended for storage and warehouses. Additionally, certain rooms on the

second floor serve as offices for university staff, and there are accommodations available for staff members in the Case Basse.

At present, the buildings of the Certosa di Pisa are generally in a state of decay, with considerable deterioration in the timber floors, roofs and, in some cases, in the masonry materials. This deterioration is often caused by factors such as water infiltration from roofs or rising damp from the ground, both capable of significantly compromising the integrity of the masonry. Furthermore, the fragmentation of governance, stemming from the existence of two separate administrations, is having a detrimental impact on resolving these critical issues, ultimately exacerbating the deterioration.

The University of Pisa recently acknowledged the necessity of restoring and re-functionalizing the entire complex. They initiated an extensive study, engaging various experts within the university. The southwestern area was selected as a case study for a pilot project, focusing on the cenobitic region, the Granduca Apartments, the Granduca Cloister, and the Chapter House Cloister.

2.2. Investigation of the Southwest Portion of the Certosa di Pisa

Investigating the structures of the monumental complex required significant effort due to their large dimensions, numerous construction phases, and transformations with various uses over time, as well as the extensive decorative elements covering most surfaces. In 2018, a survey campaign was conducted, employing both manual measuring and laser scanners. Additionally, a series of onsite tests were planned and executed to identify the construction elements and their interconnections accurately. To achieve this, specific forms were prepared containing the test list, indicating the position and purpose of each test, describing the room where the test would occur, and recording the presence of decorative elements within it. The forms also included details about equipment, execution methods, estimated costs, and priority levels for each investigation. The survey aimed to characterize the main masonry typologies in the area, utilizing the Masonry Quality Index (MQI) method [38] to estimate strength values for each masonry type. The materials identified include bricks for the vaults and walls, sandstone for the columns of the cloisters, and locally sourced stone, primarily quartzite from the nearby Monti Pisani, used for the general masonry. Three main masonry macro-categories were identified: stone masonry with irregular geometric bond patterns, mixed stone and brick masonry with chaotic geometric bond patterns, and brick masonry with lime mortar. Due to the limited number of tests, the masonry was also mapped by analogy, where the identified masonry typology was extended to areas believed to belong to the same construction phase. A similar approach was also taken for vault types, as investigating their internal structure was often impractical. Additionally, connection deficiencies between wall panels at the interface of different construction phases were hypothesized and later verified through specific investigations. Extensive explorations of the roofs were conducted, with attempts made to assess the physical and mechanical properties of the timber whenever feasible. Concurrently, load values were measured in approximately forty metal tie-rods. This provided an opportunity to employ innovative techniques using acoustic measurement [39]. The investigation included analyzing crack and deformation patterns, creating a three-dimensional geometric model for exploration, and assessing material types and their continuity. These efforts greatly facilitated the identification of underlying causes of instability symptoms, structural deficiencies, potential active mechanisms, and primary seismic vulnerabilities.

Based on these observations, intervention proposals were formulated, and additional investigations were recommended to evaluate their feasibility. In this context, the HBIM played a crucial role by synthesizing all collected data and enabling their visualization on the three-dimensional model. The HBIM model has proven invaluable for synthesizing information and guiding decision-making regarding intervention strategies and further investigations.

2.3. Creation of the HBIM Model: A Workflow for Semantic Modeling and Data Fusion

The southwestern portion of the Certosa has a volume of approximately 40,500 m³. The creation of the HBIM model entailed three primary phases: information acquisition, data processing, and data fusion, all executed using Autodesk Revit (r. 2020) [40] and Autodesk AutoCAD (r. 2020) [41] software. The geometric survey conducted by the A.S.T.R.O. Laboratory at the University of Pisa primarily relied on a three-dimensional point cloud generated from a Leica Scan Station C10 laser scanner (Figure 3). In instances where supplementary information was required, manual measuring was conducted, complemented by archival research.

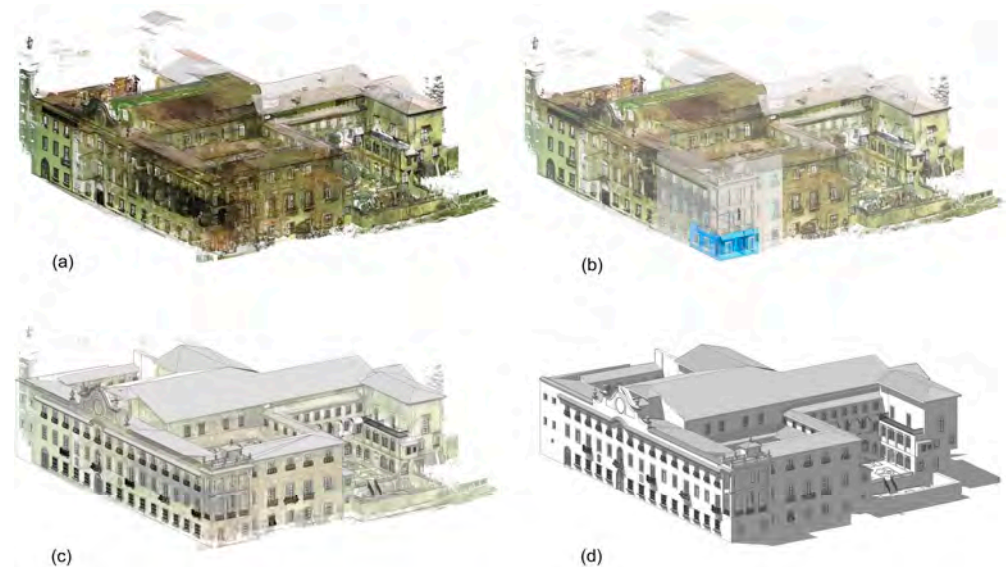


Figure 3. Phases of creating the three-dimensional model, starting from the point cloud. (a) the point cloud; (b) data processing, wall modeling; (c) the model overlaid on the point cloud; (d) geometric model reconstruction.

The point cloud data were imported into Autodesk ReCap Pro (r. 2020) [42] for cleaning and segmentation, streamlining their management and processing. Subsequently, each region of interest was exported in the .rcp format, compatible with Autodesk Revit. The digitized survey was seamlessly integrated with the direct geometric survey to improve accuracy, furnish references, conduct detailed surveys, and correct deficiencies in shaded areas.

Thematic data acquisition was conducted concurrently to align with the objectives of the HBIM model. This involved identifying the construction time of structural elements; determining masonry, vault, and floor types; assessing deterioration conditions and material pathologies; documenting the symptoms of instability of the structures, including cracking and deformation patterns; and mapping the positions of the performed in situ tests. A scan-to-BIM approach was employed, which entailed the creation, manipulation, and positioning of native BIM components in direct reference to the point cloud.

The considerable number of obstacles and furnishings, together with the complexity of the architectural structure, made identifying shapes quite challenging. Converting 3D scanning data into editable solid CAD models required cloud segmentation and shape reconstruction, which in this case could only be achieved manually. Furthermore, the limitations in Revit's capabilities for creating complex shapes meant that the construction of three-dimensional objects was executed primarily by generating parametric shapes on a case-by-case basis. Customized content was indispensable due to the unique nature of architectural heritage elements, unlike the standardized components typically found in new constructions. Freeform modeling programs, such as Autodesk AutoCAD, were utilized to model and mesh complex geometric elements like vaults and cracks using

NURBS geometry. As for vaults, 3D generating curves extracted from the point cloud were utilized to create surfaces, which were then processed and meshed (Figure 4). Each surface was individually modeled, resulting in a total of 205 units. This process involved tracing construction lines and creating a Revit family file (.rfa) up to its final placement within the structure. During this phase, the simplification of geometry inevitably led to a loss of information, such as irregularities on wall or vault surfaces. To address this, the three-dimensional points detected within the file were preserved, enabling useful comparisons with the simplified geometry when necessary (Figure 3c). The resulting model is depicted in Figure 3d. Once the geometry of all components was established, additional relevant data and information were incorporated in a structured manner, associating them with each individual BIM element. Following the processing phase, an extensive digital database was developed, compiling the documentation and information generated during the survey work, which were then refined and synthesized according to specific procedures.

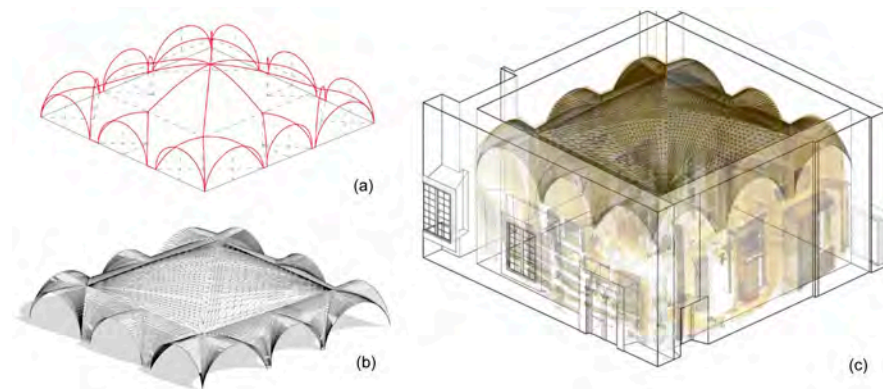


Figure 4. The process of modeling the vaults: (a) generating curves; (b) creating the surface mesh; (c) placing the mesh within the geometric structures.

The model was designed to receive and store any data relevant to it. In contrast to a new construction project, where necessary parameters are typically pre-implemented in BIM software, incorporating customizable attributes is often required for existing buildings. These attributes can be integrated into the model to accommodate various types of information as needed. To achieve this, new project parameters are added to existing items concerning the properties of various elements. These are obtained by defining the name and type of the parameters, the section under which the parameters will be grouped and, finally, the category to which they will refer.

Constructing the database necessitated designing data entry methods tailored for historical buildings. For instance, a workflow was devised to streamline the three-dimensional modeling of cracks, totaling approximately 480 cracks, and their subsequent integration into the HBIM model. These cracks were modeled based on visible traces in the point cloud, supplemented by an extensive photographic survey capturing the vertical and vaulted surfaces to unveil connections between vertical and horizontal crack patterns.

The development of the HBIM model encompassed a thorough workflow integrating diverse software tools and methodologies to capture and integrate both geometric and thematic data, culminating in a refined digital representation of the historical construction.

To represent cracks on construction elements with complex geometry, such as vaults, a process was devised. Initially, the vault mesh was superimposed onto the point cloud using Autodesk AutoCAD. Cracks were delineated using spline curves, which were subsequently extruded to generate surfaces. Within the Revit model, cracks were positioned after defining a new generic metric model family in the Autodesk Revit .rfa file format. On vertical walls, cracks were directly drawn in Revit using solid modeling functions. The point cloud was superimposed on the model to accurately trace the course of the crack, aided by detailed photographic documentation collected onsite. Extrusion along the traced path yielded the creation of an additional element.

The outcomes of the conducted testing investigations, along with their corresponding executive reports, were seamlessly integrated into the model. Specialized forms were utilized for this purpose, showcasing the position of each test in plan, offering images, and providing graphical representations of the surrounding structures, encompassing their historical transformations. The survey results were presented in conjunction with geometric dimensions of the structures or surveyed stratigraphy. Figure 5 depicts the form filled out with data related to investigation number 9. As can be observed in the figure, the general form contains both information about the investigation and details about the surrounding environment and the historical uses of the room where the investigation took place. This is useful for the approval of the test by the responsible Superintendence Office, for which the general information form is intended.

US2_p_01_1.39 Investigation P_1.09

GENERAL INFORMATION	
FLOOR	First floor (Granduca's lodge)
ROOM	1.39
SAMPLE TYPOLOGY	Floor sample at 1/5 of the room width
DIMENSIONS	6.0 m x 4.5 m
INTENDED USE OF THE ROOM	C3 - museum area (5 kN/sqm live load)
TYPE OF FLOOR SLAB	Low rise vault - plastered intrados
CRITICAL ISSUES	Presence of cracks equipped with glass marks (13.06.1997)
HISTORICAL USE	
End of the 14th – 15th cent.	Spaces not yet existing, or about which there is insufficient information.
17th century	The construction of the Great Lodge in the southern wing (1613)
First half of the 18th cent.	Unchanged uses and non-significant interventions
Priore Maggi – 18th century	Granduca's lodge
First half of the 19th cent.	Unchanged uses and non-significant interventions
1871 Regio Conservatorio Sant'Anna	Apartment of the director of the Sant'Anna conservatory.
Barracking	Office and reception room of the commanding officer of the 32nd regiment.
1915– 1917 Italian soldiers' hospital	Spaces with unchanged functions used by the R.R. Spedali
1917–1919 prisoners' hospital	Spaces used by the R.R. Spedali for the reserve hospital with unchanged function.
21st century	Spaces included in the visit path of the National Museum.

cracks
horizontal surfaces

widening cracks
vertical surfaces

spalls, cracks
vertical surfaces

investigation floor (S)

Scale 1:100

Scale 1:5

Date: 06.06.2024 - 06.06.2024

Typology/Description: Low rise masonry vault (plastered intrados) with existing floor slabs (see investigation 1.08)

Stratigraphy:

LEADS	Code	Material	Thickness	Unit weight
1) Terracotta floor tiles	1/1	0.02	2000	20000
2) Subfloor	2/1	0.02	2000	20000
3) Filling	3/1	0.02	1500	15000
4) Brick vault	4/1	0.10	1800	18000
5) Plaster	5/1	0.02	1800	18000

Figure 5. The form related to investigation 9.

The database's logical organization was established to utilize the design parameters, indexing the location of each element by floor, room, and element unit, along with technical and descriptive characteristics. Information regarding imported elements and the relationships between them was meticulously entered along with the results of the onsite tests. Logical markings, such as rectangles denoting tests on vertical elements with corresponding masonry typology, circles representing tests on vaults, and dots indicating the degree of connection between adjacent walls, were employed for this purpose (Figure 6).

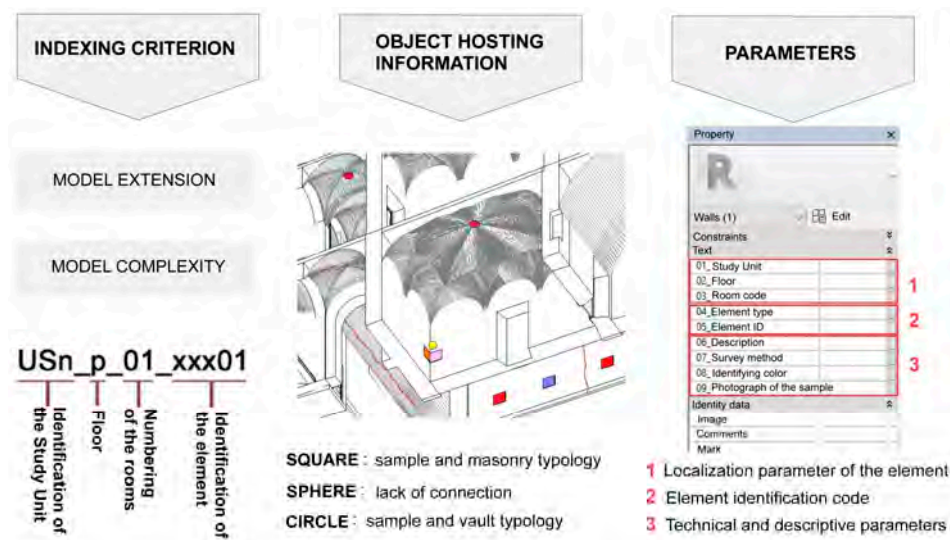


Figure 6. Logical organization of the database.

2.4. Automation of Structural Analyses in the BIM Environment

Another objective of this study was to devise automated and updateable calculation procedures in a BIM environment for the safety assessment of masonry structures. For this purpose, the simplified analysis of masonry walls under static loads was chosen according to the Italian standard [43]. To evaluate seismic safety, limit analysis based on the kinematic approach with rigid blocks was selected to predict the Peak Ground Acceleration (PGA) that may cause collapse of the structure, adopting both force-based and displacement-based criteria. This appeared correct, recognizing that out-of-plane mechanisms are often observed in old buildings during shaking, due to some peculiar characteristics that were also recognized in the present case study: the lack of effective connections between horizontal structures and walls, or between adjacent walls, as well as the considerable slenderness of walls, even when such connections are effective.

The goal of analysis automation was accomplished by harnessing BIM's capabilities to extract geometric parameters, such as areas and volumes, from the model and adapting the HBIM methodology accordingly. The initial phase of automating the calculations entailed enriching the model by integrating all essential information into the BIM environment. Primarily, the static assessment of masonry elements necessitates determining the weights of the overlying structures, along with the loads acting on them and their respective eccentricities.

The analysis encompassed both dead and live loads. Load influence areas for each vertical element were identified and depicted by horizontal entities with specific stratigraphy. Subsequently, the BIM elements were enriched by inputting design parameters from various categories, including geometric dimensions, layer thickness, and the self-weight of the constituent materials.

Once parameter values were assigned, querying the HBIM model generated real tables, referred to as abacus views, containing information derived from the properties of individual elements, such as the loads acting on each element and their corresponding eccentricities. However, due to Revit's inability to perform cross-object operations (operations involving parameters of different objects), an external program was necessary: in this case, Microsoft Excel (r. 16.0.) [44]. The connection between Revit's property tables and the corresponding data tables in the Excel sheet was established using a plugin called Ideate BIMLink (r. 2020) [45]. This facilitated the automation of the procedure and streamlined updates based on new survey campaigns.

Following the guidelines outlined in the Italian Building Code (Section 4.5.6, [43]), the safety assessment of masonry elements under vertical loads was performed on ten sections of 1-meter-wide masonry walls.

Regarding the seismic collapse mechanisms, the automation encompassed both linear and nonlinear verifications. Potential mechanisms were initially identified, taking into account the unique characteristics of the building, including construction phases, three-dimensional crack patterns, and the presence of effective metal tie-rods or other safety measures in critical areas. The main mechanisms involving the top portions of the structure were selected. Due to uncertainties regarding the degree of connection between orthogonal wall elements and between floors and the façade, the simple or compound overturning of panels around a hinge with a horizontal or inclined axis was preferred, assuming one-sided connection of the panel. To streamline this analysis, in order to automatically extract the coordinates of the centroids of all bodies involved in the kinematic motion, a program was developed utilizing Autodesk Dynamo© (r.1.0) [46], an open graphical programming software platform that manages geometrix parameters. These coordinates were then exported to specially designed Excel spreadsheets.

3. Results and Discussion

The results obtained from the model are manifold and demonstrate its ability to provide the technician with a comprehensive view of the structure and the symptoms of instability, thereby facilitating the formulation of intervention proposals and highlighting any new knowledge needs. Structural diagnosis is facilitated through three-dimensional modeling, but also, and above all, through the integration of information from various fields, including historical analysis, surveys, onsite tests, and crack patterns. The safety assessment phase leverages the results of the previous phase and some simple automatic procedures that can be implemented on the model. Finally, the formulation of design proposals is enabled with the contribution of all collected information and a geometric model capable of accommodating both intervention needs and new knowledge requirements that may arise, both in view of the implementation of the same design ideas and from the results of structural analyses.

3.1. The Knowledge Phase

The resulting model collects various information on structures such as floors, vaults, and masonry walls; construction phases of the historical building; load measurements on metal tie-rods; three-dimensional representations of crack patterns on vertical walls and vaults; and the results of approximately 80 onsite tests. The model allows one to generate plans, elevations, sections, detail drawings, and tables. The first interesting result is the representation of load-bearing elements. This product, which facilitates the understanding of the organization of the structural system, represents the first step towards the diagnosis and planning of interventions, especially in such a complex context of spaces and shapes. Figure 7 displays two examples of three-dimensional views of the horizontal structures—those of the attic rooms and the first floor, respectively—accompanied by tables containing detailed information on each element.

Simultaneously, it is possible to create views depicting the structures built during specific time periods, providing information about the construction phases. Figure 8 shows the built environment in the first and second phases, with elements constructed during each period highlighted in red.

HBIM also facilitates the collection and synthesis of information relating to tests on materials and structures. In addition, the model includes details such as images, observations, geometric data, and results obtained. The example depicted in Figure 9 shows an axonometric view of a section of the building's west side, viewed from the interior, with details regarding the location and results of onsite tests provided within the accompanying documentation.



Figure 7. Views of the horizontal structures of the attic floor and the first level of the study area, with relative forms.

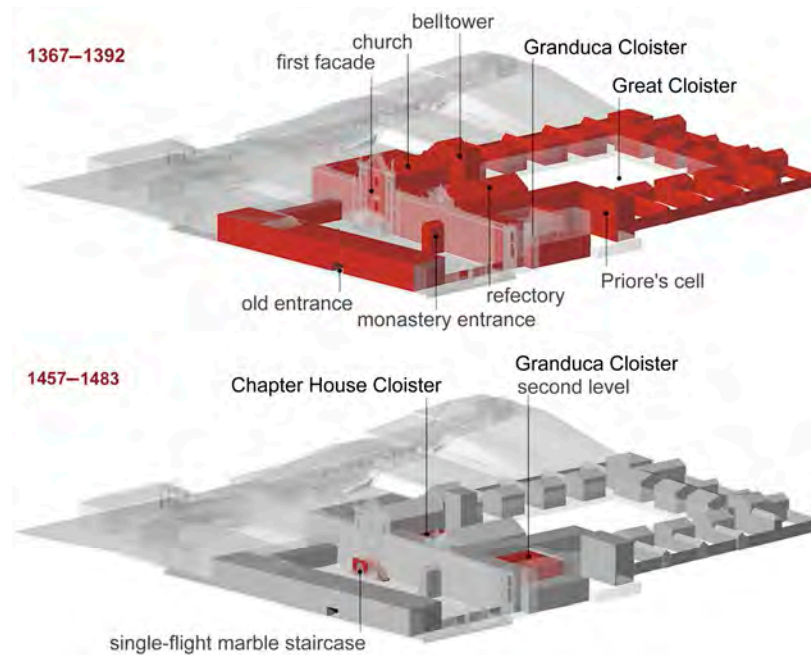


Figure 8. The first two construction phases of the Certosa di Pisa.

A virtual tour implemented in an HTML environment not only allows designers to navigate smoothly within the model and explore its geometric features, but also enables them to access and read the information contained within the model. This not only enhances the perception of space but also activates sensitivity towards the structure's static behavior. Figure 10 showcases a screenshot of the virtual tour of the Granduca Cloister, highlighting a hotspot that enables visualization of the results of an onsite test with plaster removal, allowing exploration of the underlying geometric bond pattern.

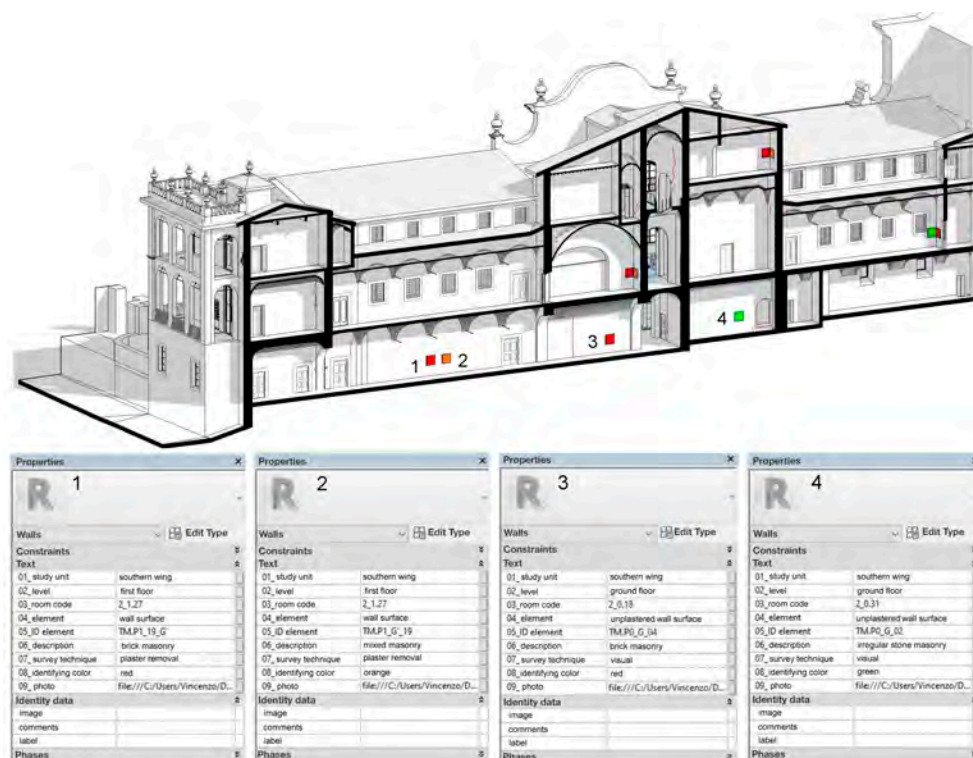


Figure 9. North-south section of the model, with the position of the onsite tests.

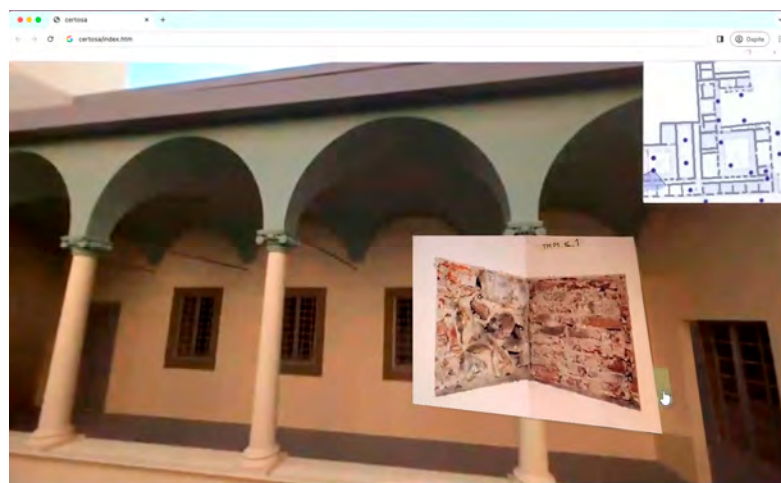


Figure 10. Screenshot of a virtual tour of the Granduca Cloister.

The materials map represents a second important outcome achieved once the fusion of data in the model has been completed, in preparation for the structural analysis phase. The materials map is obtained by incorporating experimental and survey data, along with a variety of indirect information deduced from the analysis of the building's evolution over time [47]. Figure 11 illustrates the map of masonry macro-categories on the first-floor plan, annotated with indications of the various construction periods.

In this study, masonry was classified into three main categories: M1, M2, and M3, along with subcategories based on the constituent materials of the units and their arrangement. The initial phase of the structural diagnosis of the southwest portion of the Certosa relied heavily on this outcome. It was supplemented by information concerning issues affecting the structures, materials, and decorative elements. In this context, the model showcases its ability to visualize the crack pattern in three-dimensional mode, displaying them on both faces of the walls through the transparency option.



Figure 11. Map of wall macro-categories—first-floor plan of the study area.

Through cutaways and elevations, it is possible to observe the correspondence of cracks on both surfaces of the same wall and between adjacent walls. This is crucial for conducting structural diagnoses, especially in complex situations, providing significant assistance in interpreting symptoms of instability, potential local mechanisms, or deterioration. Figure 12 shows some significant perspective images from the HBIM relating to the Granduca Cloister, the vault of the ancient refectory, and other portions of the southwestern side of the monastery furrowed by well-visible cracks.

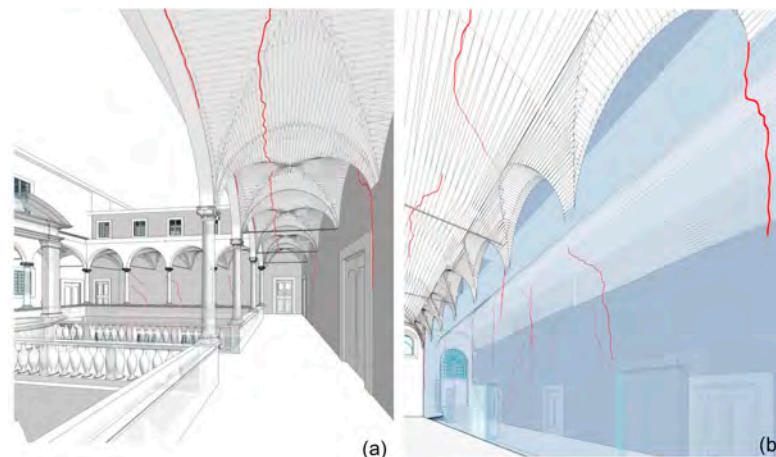


Figure 12. Perspective images exportable from the HBIM: (a) Granduca Cloister; (b) ancient refectory.

Widespread cracks are found near the openings, with clear signs of lintel precariousness, and on the intrados of the vaults, indicating the absence of elements to counteract thrusts. The availability of a three-dimensional model proved to be very useful for evaluating crack patterns, especially their correspondence with the observed deformations, which can be directly deduced from the analysis of the point cloud [48].

3.2. Structural Safety Assessment

The previous considerations were useful for analyzing the maintenance status of the southwestern portion of the Certosa, as well as the safety of the structural elements, highlighting various problems, including deterioration of materials and specific situations that must be promptly addressed to guarantee the building’s safety, as well as regarding seismic actions.

In this context, automating structural analyses within a BIM environment can help provide an initial overview of areas in need of more detailed assessments. In Figures 13 and 14, some results are shown regarding the static analysis of the masonry walls and the seismic analysis of the collapse mechanisms, respectively. In Figure 13, a graduated color bar from green to orange represents the safety level of each wall panel under gravity loads: green indicates safety levels higher than 2, while orange indicates values close to 1. Figure 14 shows some portions of masonry that could be affected by seismic collapse mechanisms. These include the loggia at the southwestern corner and decorative elements on the upper part of the façade, visualized in the HBIM, along with the numerical results included in the object’s property sheet. Overall, the seismic analysis revealed high vulnerability, particularly in slender elements, vaults supporting partitions, and upper portions of walls at elevated positions.



Figure 13. Visualization of the results of the safety assessment of walls in the ten sections (numbers 1–10) under gravity loads in the HBIM environment.

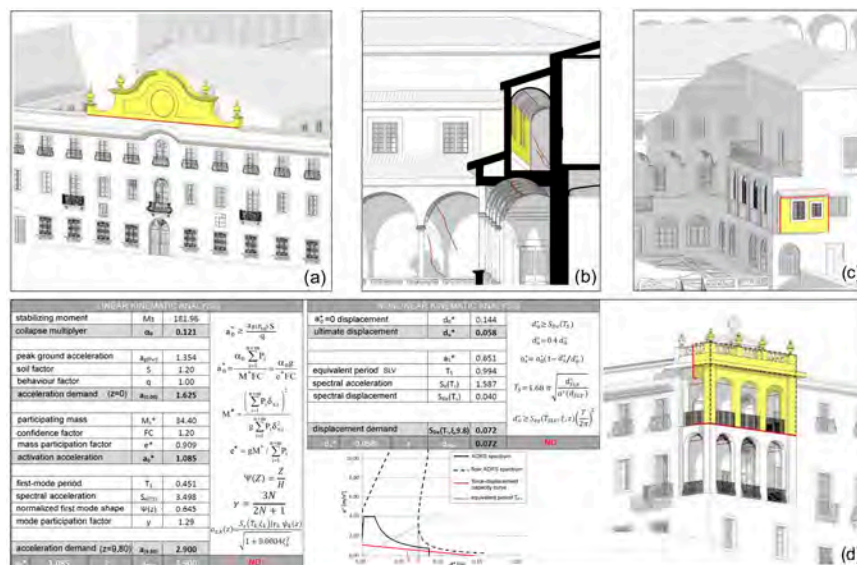


Figure 14. Some seismic collapse mechanisms identified: (a) decorative elements on the upper part of the main façade; (b) prior’s loggia; (c) masonry wall near the prior’s garden; (d) loggia in the southwest corner, with the numerical results included in the object’s property sheet.

In general, the structural safety assessment showed that the horizontal structures are mostly insufficient in their original sizing and lack a suitable degree of safety where deterioration has weakened the materials or made thrust-counteracting elements ineffective. Furthermore, the lack of connection between adjacent walls, whether belonging to the same construction phase or to different phases, was found throughout the building, making it particularly vulnerable to seismic activity.

In this case, limit analysis based on the kinematic approach appeared advantageous because it is particularly simple and easily automatable, thus making it extendable to a very large number of elements. However, as shown in [49], all current analysis methods for identifying potential mechanisms fail to provide realistic predictions, including this one. This makes it clear that more efforts should be employed to improve knowledge and develop methodologies that provide predictions closer to the real behavior of masonry structures. Other seismic vulnerability factors, such as vertical discontinuities of the walls, poor construction quality, and numerous historical modifications, were identified almost everywhere. However, there is uncertainty in assessing the extent and quality of the materials and the load-bearing sections, and in determining the exact position of loads. The analysis indicated no pathologies related to soil behavior affecting the entire building, but it generally highlighted high seismic vulnerability of the structures.

3.3. Intervention Design and New Knowledge Needs

Based on the results of the structural safety assessment, it is possible to devise intervention proposals, as well as new knowledge needs, where onsite analyses and safety evaluations do not result in a reliable conclusion. The preliminary consolidation project includes interventions addressing recurring issues to achieve structural safety and reduce seismic vulnerability. These interventions include the reconstruction of timber floors with degraded or undersized members, employing the same materials and techniques when individual element replacement is ineffective. Additionally, the project entails the installation of additional metal tie-rods in vaults, particularly when absent or existing ones are inefficient. It is also crucial to reduce the load of filling materials on the vaults. Reinforcement options for the in-folio vaults of the roof include reinforced mortar overlay or fiber-reinforced materials, taking into consideration the preservation of decorations on the intrados. Partitioning walls should be secured to prevent out-of-plane mechanisms during earthquakes, while those supported by the vaults may need to be demolished or made safe, potentially through active interventions: for example, by hanging them on a new load-bearing structure.

The database enables interactive three-dimensional visualization of structural elements and critical areas, facilitating the identification of those requiring further analysis or consolidation interventions. Based on this analysis, critical situations and areas needing further investigation can be identified and visually represented on synthetic maps. This aids in depicting the current state and identifying the need for new tests for more in-depth structural analyses, forming the basis for the subsequent consolidation project. Figure 15 illustrates a sample summary map on the plan of the second floor, detailing major critical issues, new investigations to be carried out, and the macro-categories of intervention types proposed in this preliminary study.

Regarding the prioritization of interventions for the mitigation of seismic risk, the recent findings concerning a methodology to assess the macro-seismic risk of monumental historical buildings [50] could be incorporated into this model, exploiting the availability of data collected for the Certosa di Pisa in the present study.



Figure 15. Plan of the second floor of the study area: the map summarizes the detected critical issues, the intervention categories, and the new knowledge needs.

4. Conclusions

The design of consolidation interventions for monumental buildings is a complex task that demands an understanding of structural behavior through a multidisciplinary knowledge process. This process initiates with geometric surveys, delves into the construction history, analyzes material structures, engages in numerical modeling, and ultimately culminates in the assessment of structural safety. In such cases, knowledge is not acquired in a single act following a predetermined method; rather, it is achieved through a series of successive approximations guided by progressive discoveries and subsequent evaluations. Given the significant artistic and historical value of the structures, this process necessitates collaborative efforts involving experts specialized in various aspects of the work. To facilitate this collaboration, systematically organizing the collected data is crucial, enabling integration and information sharing among different professionals. Additionally, the intricate shapes and articulated volumes of monumental buildings pose challenges in obtaining accurate geometric surveys, emphasizing the need for a model capable of rendering data readable and shareable, thereby enhancing knowledge and ensuring interoperability.

While the model presented in this study primarily focuses on the structural aspect of the building, it also has the ability to incorporate information about decorative elements, frescoes, architectural details, and the state of conservation of materials. This flexibility not only streamlines the design of new survey campaigns but also facilitates interventions that preserve the artistic value of the property. Furthermore, the integration of virtual and augmented reality in managing information derived from HBIM opens additional opportunities for consolidating concentrated information within geolocated interactive interfaces. This enables immediate consultation and enhances the effectiveness of the model's utilization. This application showcases the full potential of the HBIM system in the consolidation of existing monumental buildings, establishing it as a fundamental tool to guide the decision-making process in cultural heritage conservation projects.

The HBIM environment is extremely rich in potential and can offer various opportunities in terms of structural assessment, but also more generally in terms of the conservation of cultural heritage. Future advancements of this work could involve the development of algorithms for nonlinear static analyses, to be applied to appropriately simplified models of the construction under examination within the same environment. The aim is to create

an informed model that can be used as a database for both the physical/architectural and the analytical/structural disciplines, preserving all relevant information throughout the entire life cycle of the construction.

Author Contributions: Conceptualization, A.D.F., F.G. (Francesca Gaglio), V.M. and M.M.; methodology, A.D.F., F.G. (Francesca Gaglio), V.M. and M.M.; software, F.G. (Francesca Gaglio), V.M. and M.M.; validation, A.D.F., F.G. (Francesca Giuliani), F.G. (Francesca Gaglio), V.M. and M.M.; formal analysis, A.D.F., F.G. (Francesca Gaglio), M.M. and V.M.; investigation, A.D.F.; resources, A.D.F.; data curation, A.D.F., F.G. (Francesca Giuliani) and M.M.; writing—original draft preparation, A.D.F.; writing—review and editing, A.D.F., F.G. (Francesca Giuliani) and M.M.; visualization, A.D.F. and M.M.; supervision A.D.F. and F.G. (Francesca Giuliani); project administration, A.D.F. All authors have read and agreed to the published version of the manuscript.

Funding: This research received no external funding.

Data Availability Statement: The data presented in this study will be made available by the authors on request.

Acknowledgments: The authors' gratitude goes to Dario Billi for providing the aerial photo of the Certosa di Pisa.

Conflicts of Interest: The authors declare no conflicts of interest.

References

1. Antón, D.; Medjdoub, B.; Shrahily, R.; Moyano, J. Accuracy evaluation of the semi-automatic 3D modeling for historical building information models. *Int. J. Archit. Herit.* **2018**, *12*, 790–805. [\[CrossRef\]](#)
2. Remondino, F.; El-Hakim, S. Image-based 3D modelling: A review. *Photogramm. Rec.* **2006**, *21*, 269–291. [\[CrossRef\]](#)
3. Potenziani, M.; Callieri, M.; Dellepiane, M.; Corsini, M.; Ponchio, F.; Scopigno, R. 3DHOP: 3D heritage online presenter. *Comput. Graph.* **2015**, *52*, 129–141. [\[CrossRef\]](#)
4. Messaoudi, T.; Véron, P.; Halin, G.; De Luca, L. An ontological model for the reality-based 3D annotation of heritage building conservation state. *J. Cult. Herit.* **2018**, *29*, 100–112. [\[CrossRef\]](#)
5. Apollonio, F.I.; Basilissi, V.; Callieri, M.; Dellepiane, M.; Gaiani, M.; Ponchio, F.; Rizzo, F.; Rubino, A.R.; Scopigno, R.; Sobra', G. A 3D-centered information system for the documentation of a complex restoration intervention. *J. Cult. Herit.* **2018**, *29*, 89–99. [\[CrossRef\]](#)
6. Azhar, S. Building information modeling (BIM): Trends, benefits, risks, and challenges for the AEC industry. *Leadersh. Manag. Eng.* **2011**, *11*, 241–252. [\[CrossRef\]](#)
7. Dore, C.; Murphy, M. Integration of historic building information modeling (HBIM) and 3D GIS for recording and managing cultural heritage sites. In Proceedings of the 18th International Conference on Virtual Systems and Multimedia, IEEE, Milano, Italy, 2–5 September 2012. [\[CrossRef\]](#)
8. Volk, R.; Stengel, J.; Schultmann, F. Building Information Modeling (BIM) for existing buildings—Literature review and future needs. *Autom. Constr.* **2014**, *38*, 109–127. [\[CrossRef\]](#)
9. Yang, X.; Grussenmeyer, P.; Koehl, M.; Macher, H.; Murtiyoso, A.; Landes, T. Review of built heritage modelling: Integration of HBIM and other information techniques. *J. Cult. Herit.* **2020**, *46*, 350–360. [\[CrossRef\]](#)
10. Celli, S.; Ottoni, F. An informative tool for the preservation of the wooden encircling tie rod of the dome of Santa Maria del Fiore, in Florence. In Proceedings of the Joint International Event 9th Arqueológica 2.0 & 3rd Geores, Valencia, Spain, 26–28 April 2021. [\[CrossRef\]](#)
11. Cardinali, V.; Ciuffreda, A.L.; Coli, M.; De Stefano, M.; Meli, F.; Tanganelli, M.; Trovatelli, F. An oriented H-BIM approach for the seismic assessment of cultural heritage buildings: Palazzo Vecchio in Florence. *Buildings* **2023**, *13*, 913. [\[CrossRef\]](#)
12. Moyano, J.; León, J.; Nieto-Julián, J.E.; Bruno, S. Semantic interpretation of architectural and archaeological geometries: Point cloud segmentation for HBIM parameterisation. *Autom. Constr.* **2021**, *130*, 103856. [\[CrossRef\]](#)
13. Monchetti, S.; Betti, M.; Borri, C.; Gerola, C.; Matta, C.; Francalanci, B. Insight on HBIM for conservation of cultural heritage: The Galleria dell'Accademia di Firenze. *Heritage* **2023**, *6*, 6949–6964. [\[CrossRef\]](#)
14. Brumana, R.; Della Torre, S.; Oreni, D.; Previtali, M.; Cantini, L.; Barazzetti, L.; Franchi, A.; Banfi, F. HBIM challenge among the paradigm of complexity, tools and preservation: The Basilica di Collemaggio 8 years after the earthquake (L'Aquila). *Int. Arch. Photogramm. Remote Sens. Spat. Inf. Sci.* **2017**, *XLII-2/W5*, 97–104. [\[CrossRef\]](#)
15. Bruno, N.; Roncella, R. Restoration oriented HBIM system for cultural heritage documentation: The case study of Parma Cathedral. *Int. Arch. Photogramm. Remote Sens. Spatial Inf. Sci.* **2018**, *XLII-2*, 171–178. [\[CrossRef\]](#)
16. Della Torre, S.; Moioli, R.; Pili, A. Digital tools supporting conservation and management of built cultural heritage. In *Innovative Built Heritage Models*; Koenraad van Balen, K., Aziliz, V.A., Eds.; CRC Press/Balkema—Taylor and Francis Group: Leiden, The Netherlands, 2018; pp. 101–106. [\[CrossRef\]](#)

17. Mora, R.; Sanchez-Aparicio, L.J.; Mate-Gonzalez, M.A.; García-Alvare, J.; Sanchez-Aparicio, M.; Gonzalez-Aguilera, D. An historical building information modelling approach for the preventive conservation of historical constructions: Application to the Historical Library of Salamanca. *Autom. Constr.* **2020**, *121*, 103449. [CrossRef]
18. Santagati, C.; Papacharalambous, D.; Sanfilippo, G.; Bakirtzis, N.; Laurini, C.; Hermon, S. HBIM approach for the knowledge and documentation of the St. John the Theologian cathedral in Nicosia (Cyprus). *J. Archaeol. Sci. Rep.* **2021**, *36*, 102804. [CrossRef]
19. Calì, A.; do Valle, Â.; de Moraes, P.D. Building Information Modeling and Structural Analysis in the Knowledge Path of a Historical Construction. In *Structural Analysis of Historical Constructions*; Aguilar, R., Torrealva, D., Moreira, S., Pando, M.A., Ramos, L.F., Eds.; RILEM Bookseries; Springer: Cham, Switzerland, 2019; Volume 18, pp. 2071–2079. [CrossRef]
20. Giuliani, F.; Gaglio, F.; Martino, M.; De Falco, A. A HBIM pipeline for the conservation of large-scale architectural heritage: The city Walls of Pisa. *Herit. Sci.* **2024**, *12*, 35. [CrossRef]
21. Crespi, P.; Franchi, A.; Ronca, P.; Giordano, N.; Scamardo, M.; Gusmeroli, G.; Schiantarelli, G. From BIM to FEM: The Analysis of an Historical Masonry Building. In *WIT Transactions on the Built Environment*; Wit Press: Bristol, UK, 2015; Volume 149, pp. 581–592. [CrossRef]
22. De Luca, L.; Driscu, T.; Peyrols, E.; Labrosse, D.; Berthelot, M. A complete methodology for the virtual assembling of dismantled historic buildings. *Int. J. Interact. Manuf.* **2014**, *8*, 265–276. [CrossRef]
23. Dore, C.; Murphy, M.; McCarthy, S.; Brechin, F.; Casidy, C.; Dirix, E. Structural simulations and conservation analysis—historic building information model (HBIM). *Int. Arch. Photogramm. Remote Sens. Spat. Inf. Sci.* **2015**, *XL-5/W4*, 351–357. [CrossRef]
24. Mol, A.; Cabaleiro, M.; Sousa, H.S.; Branco, J.M. HBIM for storing life-cycle data regarding decay and damage in existing timber structures. *Autom. Constr.* **2020**, *117*, 103262. [CrossRef]
25. Bruno, S.; De Fino, M.; Fatiguso, F. Historic building information modelling: Performance assessment for diagnosis-aided information modelling and management. *Autom. Constr.* **2018**, *86*, 256–276. [CrossRef]
26. Bouzas, Ó.; Cabaleiro, M.; Conde, B.; Cruz, Y.; Riveiro, B. Structural health control of historical steel structures using HBIM. *Autom. Constr.* **2022**, *140*, 104308. [CrossRef]
27. Croce, P.; Landi, F.; Puccini, B.; Martino, M.; Maneo, A. Parametric HBIM Procedure for the Structural Evaluation of Heritage Masonry Buildings. *Buildings* **2022**, *12*, 194. [CrossRef]
28. Croce, P.; Landi, F.; Formichi, P. Probabilistic Seismic Assessment of Existing Masonry Buildings. *Buildings* **2019**, *9*, 237. [CrossRef]
29. McNeel Europe Grasshopper—Algorithmic Modeling for Rhino. Available online: <https://www.grasshopper3D.com/> (accessed on 28 January 2020).
30. Barazzetti, L.; Banfi, F.; Brumana, R.; Oreni, D.; Previtali, M.; Roncoroni, F. HBIM and augmented information: Towards a wider user community of image and range-based reconstructions. *Int. Arch. Photogramm. Rem. Sens. Spat. Inf. Sci.* **2015**, *XL-5/W7*, 35–42. [CrossRef]
31. Conti, A.; Fiorini, L.; Massaro, R.; Santoni, C.; Tucci, G. HBIM for the preservation of a historic infrastructure: The Carlo III bridge of the Carolino aqueduct. *Appl. Geomat.* **2022**, *14*, 41–51. [CrossRef]
32. Garcia-Valldecabres, J.L.; Liu, J.; Willkens, D.S.; Escudero, P.A.; Lòpez-Gonzalez, C.; Cortès Meseguer, L.; Orozco Carpio, P. Development of a virtual itinerary with HBIM and GIS. *Int. Arch. Photogramm. Rem. Sens. Spat. Inf. Sci.* **2023**, *48*, 645–652. [CrossRef]
33. Lovell, L.J.; Davies, R.J.; Hunt, D.V. The application of historic building information modeling (HBIM) to cultural heritage: A review. *Heritage* **2023**, *6*, 6691–6717. [CrossRef]
34. Stoleru, A.; Jacquot, K. HBIM: Une analyse de la littérature scientifique. In Proceedings of the SCAN'20—9e Séminaire de Conception Architecturale Numérique, Bruxelles, Belgium, 16–20 November 2020. [CrossRef]
35. Manghi, A. *La Certosa di Pisa: Storia (1366–1866) e Descrizione*; Tipografia Editrice Mariotti: Pisa, Italy, 1911.
36. Piombanti, G. *La Certosa di Pisa e dell'Isola di Gorgona: Con Notizie Inedite e la Descrizione della Prima come Esiste Presentemente/pel Sacerdote Giuseppe Piombanti*; Tipografia Fabbreschi & C.: Livorno, Italy, 1884.
37. Giusti, M.A.; Lazzarini, M.T. *La Certosa di Pisa a Calci*; Pacini: Pisa, Italy, 2003.
38. Borri, A.; Corradi, M.; Castori, G.; De Maria, A. A method for the analysis and classification of historic masonry. *Bull. Earthq. Eng.* **2015**, *13*, 2647–2665. [CrossRef]
39. Resta, C.; Chellini, G.; De Falco, A. Dynamic Assessment of Axial Load in Tie-Rods by Means of Acoustic Measurements. *Buildings* **2020**, *10*, 23. [CrossRef]
40. Autodesk. Revit [Software]. 2020. Available online: <https://www.autodesk.it/products/revit/> (accessed on 18 January 2020).
41. Autodesk. Autocad [Software]. 2020. Available online: <https://www.autodesk.it/products/autocad/> (accessed on 18 January 2020).
42. Autodesk. Recap [Software]. 2020. Available online: <https://www.autodesk.it/products/recap/> (accessed on 18 January 2020).
43. Italian Ministry of Infrastructure and Transport. *NTC 2018-Italian Building Code*; Istituto Poligrafico e Zecca dello Stato: Rome, Italy, 2018. (In Italian)
44. Microsoft Excel [software]. 2020. Available online: <https://www.microsoft.com/it-it/microsoft-365/excel> (accessed on 18 January 2020).
45. Ideate. BIMLink [Software]. 2020. Available online: <https://ideatesoftware.com/ideatebimlink> (accessed on 20 March 2020).
46. Autodesk. Dynamo BIM [Software]. 2016. Available online: <https://dynamobim.org/> (accessed on 20 March 2020).

47. Puncello, I.; Karwacka, E. The Importance of an Integrated Historical Analysis for the Preservation of Cultural Heritage Monumental Buildings: The Case Study of Certosa di Calci. *Int. J. Archit. Herit.* **2023**, *17*, 1542–1570. [[CrossRef](#)]
48. Bartolini, G.; Giuliani, F.; De Falco, A. Proof of Concept for Methodological Framework Including Point Clouds in the Non-Destructive Diagnosis of Historical Masonry Structures. *Int. J. Archit. Herit.* **2023**, 1–24. [[CrossRef](#)]
49. Mendes, N.; Costa, A.A.; Lourenço, P.B.; Bento, R.; Beyer, K.; de Felice, G.; Gams, M.; Griffith, M.C.; Ingham, J.M.; Lagomarsino, S.; et al. Methods and Approaches for Blind Test Predictions of Out-of-Plane Behavior of Masonry Walls: A Numerical Comparative Study. *Int. J. Archit. Herit.* **2017**, *11*, 59–71. [[CrossRef](#)]
50. Puncello, I.; Caprili, S.; Bonanni, E. Macroseismic risk classification of historical constructions: The LEXSIS approach. *Bull. Earthq. Eng.* **2022**, *20*, 287–317. [[CrossRef](#)]

Disclaimer/Publisher’s Note: The statements, opinions and data contained in all publications are solely those of the individual author(s) and contributor(s) and not of MDPI and/or the editor(s). MDPI and/or the editor(s) disclaim responsibility for any injury to people or property resulting from any ideas, methods, instructions or products referred to in the content.