

Negative Hyperselection of Patients With *RAS* and *BRAF* Wild-Type Metastatic Colorectal Cancer Who Received Panitumumab-Based Maintenance Therapy

Federica Morano, MD¹; Salvatore Corallo, MD¹; Sara Lonardi, MD²; Alessandra Raimondi, MD¹; Chiara Cremolini, MD, PhD³; Lorenza Rimassa, MD⁴; Roberto Murialdo, MD⁵; Alberto Zaniboni, MD⁶; Andrea Sartore-Bianchi, MD^{7,8}; Gianluca Tomasello, MD⁹; Patrizia Racca, MD¹⁰; Matteo Clavarezza, MD¹¹; Vincenzo Adamo, MD¹²; Federica Perrone, PhD¹; Annunziata Gloghini, PhD¹; Elena Tamborini, PhD¹; Adele Busico, MD¹; Antonia Martinetti, MDSc¹; Federica Palermo, MDSc¹; Fotios Loupakis, MD, PhD²; Massimo Milione, MD, PhD^{2,3}; Giovanni Fucà, PhD¹; Maria Di Bartolomeo, MD¹; Filippo de Braud, MD^{1,8}; and Filippo Pietrantonio, MD^{1,8}

abstract

PURPOSE We assessed the prognostic/predictive role of primary tumor sidedness and uncommon alterations of anti-epidermal growth factor receptor (EGFR) primary resistance (primary resistance in *RAS* and *BRAF* wild-type metastatic colorectal cancer patients treated with anti-EGFR monoclonal antibodies [PRESSING] panel) in patients with *RAS/BRAF* wild-type (wt) metastatic colorectal cancer (mCRC) who were randomly assigned to panitumumab plus fluorouracil, leucovorin, and oxaliplatin (FOLFOX-4) induction followed by maintenance with panitumumab with or without fluorouracil (FU) plus leucovorin (LV); Valentino trial (ClinicalTrials.gov identifier: NCT02476045).

PATIENTS AND METHODS This prespecified retrospective analysis included 199 evaluable patients with *RAS/BRAF* wt. The PRESSING panel included the following: immunohistochemistry (IHC) and in situ hybridization for *HER2/MET* amplification, IHC with or without RNA sequencing for *ALK/ROS1/NTRKs/RET* fusions, next-generation sequencing for *HER2/PIK3CAex.20/PTEN/AKT1* and *RAS* mutations with low mutant allele fraction, and multiplex polymerase chain reaction for microsatellite instability. PRESSING status (any positive biomarker v all negative) and sidedness were correlated with overall response rate (ORR), progression-free survival (PFS), and overall survival (OS) in the study population and by treatment arm.

RESULTS Overall, left- and right-sided tumors were 85.4% and 14.6%, respectively, and PRESSING-negative and -positive tumors were 75.4% and 24.6%, respectively. At a median follow-up of 26 months, inferior outcomes were consistently observed in right- versus left-sided tumors for ORR (55.2% v 74.1%; $P = .037$), PFS (8.4 v 11.5 months; $P = .026$), and OS (2-year rate: 50.2% v 65.1%; $P = .062$). Similar results were observed in the PRESSING-positive versus PRESSING-negative subgroup for ORR (59.2% v 75.3%; $P = .030$), PFS (7.7 v 12.1 months; $P < .001$), and OS (2-year rate: 48.1% v 68.1%; $P = .021$). The PFS benefit of FU plus LV added to panitumumab maintenance, reported in the study, was independent from sidedness and PRESSING status (interaction for PFS $P = .293$ and $.127$, respectively). However, outcomes were extremely poor in patients who received single-agent panitumumab and had right-sided tumors (median PFS, 7.7 months; 2-year OS, 38.5%) or PRESSING-positive tumors (median PFS, 7.4 months; 2-year OS, 47.0%).

CONCLUSION The combined assessment of sidedness and molecular alterations of anti-EGFR primary resistance identified a consistent proportion of patients with *RAS/BRAF*-wt mCRC who had inferior benefit from initial anti-EGFR-based regimens, particularly after maintenance with single-agent anti-EGFRs.

J Clin Oncol 37:3099-3110. © 2019 by American Society of Clinical Oncology

Licensed under the Creative Commons Attribution 4.0 License 

INTRODUCTION

The decision-making algorithm of the treatment of patients with metastatic colorectal cancer (mCRC) has deeply changed in the recent years, and it should now take into account both clinical and tumor molecular features. Since the introduction of anti-epidermal

growth factor (EGFR) monoclonal antibodies, the progressive refinement of the negative selection paradigm has led to notable improvements of patients' outcomes.¹ All current guidelines recommend consideration of an anti-EGFR-based first-line therapy after the evaluation of *RAS* and *BRAF* mutational

ASSOCIATED CONTENT

See accompanying

Editorial on page 3066

Appendix

Author affiliations and support information (if applicable) appear at the end of this article.

Accepted on July 11, 2019 and published at jco.org on September 20, 2019; DOI <https://doi.org/10.1200/JCO.19.01254>

status in addition to assessment of primary tumor sidedness.^{2,3} Because of the negative predictive role of *RAS* and *BRAF* mutations and right sidedness, patients with left-sided, *RAS* and *BRAF* wild-type mCRC currently are regarded as optimal candidates for anti-EGFR agents alone or in combination with chemotherapy.⁴⁻⁹ However, several gaps in knowledge about primary resistance to EGFR inhibition exist, and more negative predictive biomarkers would be clinically useful in both left- and right-sided primary tumors.

In a recent case-control study in patients with *RAS* and *BRAF* wild-type mCRC treated with single-agent anti-EGFR therapy,¹⁰ we demonstrated the promising negative predictive impact of a panel of uncommon molecular alterations linked to primary resistance to EGFR inhibition. This panel, the Primary resistance in *RAS* and *BRAF* wild-type metastatic colorectal cancer patients treated with anti-EGFR monoclonal antibodies (PRESSING) panel, includes *HER2* amplification/activating mutations; *MET* amplification; *NTRK/ROS1/ALK/RET* rearrangements; *PIK3CA* exon 20, and *PTEN* and *AKT1* mutations.

Here, we present the results of a prespecified exploratory analysis of the Valentino study (ClinicalTrials.gov identifier: [NCT02476045](https://clinicaltrials.gov/ct2/show/study/NCT02476045)) to investigate the prognostic role of tumor sidedness and PRESSING panel in patients with *RAS* and *BRAF* wild-type mCRC who were randomly assigned to maintenance with either single-agent panitumumab or panitumumab plus fluorouracil and leucovorin (FU + LV) after a 4-month induction with panitumumab plus fluorouracil, leucovorin, and oxaliplatin (FOLFOX-4).

PATIENTS AND METHODS

Study Population

The Valentino study was a multicenter, randomized, open-label, phase II trial that investigated the progression-free survival (PFS) noninferiority of maintenance with single-agent panitumumab (arm B) versus panitumumab plus FU plus LV (arm A) after an induction treatment with panitumumab plus FOLFOX-4 in patients with *RAS* wild-type mCRC.¹¹ The trial enrolled 229 patients (arm A, n = 117; arm B, n = 112) and showed that maintenance with single-agent panitumumab is inferior to panitumumab plus FU/LV in terms of PFS.

The main inclusion criteria were as follows: histologically confirmed CRC with *RAS* (exons 2, 3, and 4 of both *KRAS* and *NRAS*) wild-type status confirmed by approved methods; an Eastern Cooperative Oncology Group performance score (ECOG PS) of 0 to 1; no previous treatment of metastatic disease, unresectable metastases, measurable, or just-evaluable disease according to RECIST version 1.1; and availability of baseline tumor samples centrally collected at the coordinating center (Fondazione IRCCS Istituto Nazionale dei Tumori). Patients were excluded if they had experienced relapse during adjuvant oxaliplatin-based chemotherapy or within 12 months from its completion (or within 6 months for

adjuvant fluoropyrimidine monotherapy) or in case of notable comorbidities.

For this exploratory analysis, we selected all those patients enrolled in the trial with at least one radiologic disease assessment and with tumor tissue specimens obtained before enrollment and available for a complete molecular analysis, including PRESSING panel and *RAS/BRAF* mutational status centrally determined at the coordinating center via next-generation sequencing (NGS). Institutional review board and ethics committee approvals were obtained from all participating centers. All of the patients provided written informed consent before any study-related procedures occurred.

Molecular Analyses

The PRESSING panel analysis included the following genomic alterations, as previously reported: *HER2* amplification/activating mutations; *MET* amplification; *NTRK/ROS1/ALK/RET* rearrangements; *PIK3CA* exon 20 mutations, *PTEN* inactivating mutations, and *AKT1* mutations.¹⁰ Briefly, immunohistochemistry (IHC) for *HER2/MET* and dual-color silver in situ hybridization for both genes were performed. IHC analyses for *ALK/ROS1/panTRK/RET* were performed as the screening method for actionable gene fusions; in all samples with evidence of IHC staining of any intensity/extension, whole-transcriptome shotgun sequencing (RNA-seq) was performed to confirm the presence of specific rearrangements. Oncogenic mutations in the hotspot regions of 50 cancer-related genes (Cancer Hotspot Panel v2; ThermoFisher Scientific, Waltham, MA), including *HER2* and *PIK3CA/PTEN/AKT1*, were assessed by means of targeted NGS through the Ion Torrent Personal Genome platform (ThermoFisher Scientific). In addition, by means of targeted NGS, *RAS* and *BRAF* mutational status was centrally reassessed with deeper coverage, and the fractional abundance of *BRAF* and *RAS* mutant allele fractions (MAFs) was reported after correction for tumor cellularity.¹²

On the basis of recent data on microsatellite instability (MSI) as a poor predictive factor in patients who received anti-EGFR-based first-line therapy,¹³ multiplex polymerase-chain reaction (PCR) was performed to evaluate MSI status. For additional details, see the Appendix (online only).

Statistical Analysis

PFS was defined as the interval from random assignment to first objective documentation of progressive disease (PD) or death as a result of any cause, whichever occurred first (censored at last follow-up for patients alive and without PD). Overall survival (OS) was the interval from random assignment to death as a result of any cause (censored at last follow-up for patients alive). Overall response rate (ORR) was defined as the proportion of patients who achieved a complete (CR) or partial response (PR). Binomial two-sided 95% CIs were calculated for ORR. Survival analyses were performed using the Kaplan-Meier

method and the Cox proportional-hazards model. Variables with a P value of $< .1$ at univariable analysis were entered into the multivariable models. An interaction term was included in the statistical models when subgroup analyses were performed. Median follow-up was calculated by the reverse Kaplan-Meier approach. The χ^2 test, the Fisher exact test, or the Mann-Whitney U test was used, as appropriate, to evaluate the association between patient baseline characteristics and tumor sidedness or PRESSING panel status. The χ^2 test or Fisher exact test was used, as appropriate, to assess the association between sidedness and/or PRESSING panel status with ORR. All tests were two sided at α of 5%. The analyses were carried out using R (version 3.5.0) and R Studio (version 1.1.447) and the survival, survminer, and epitools packages.

RESULTS

Baseline Characteristics

A total of 199 (87%) of the 229 enrolled in the Valentino study were eligible for this prespecified exploratory analysis. The CONSORT diagram of the study is illustrated in Appendix Figure A1 (online only).

Baseline patients and disease characteristics are listed in Table 1. Overall, 52.3% and 47.7% patients were treated in arms A and B, respectively. Left- and right-sided tumors accounted for 170 (85.4%) and 29 (14.6%) patient cases, and the PRESSING panel was negative in 150 (75.4%) patients and positive in 49 (24.6%) patients.

The incidence of the singular molecular alterations included in the PRESSING panel is illustrated in Figure 1 and listed in Appendix Table A1 (online only). Notably, amplifications of *HER2* and *MET* genes were present in nine patients (4.5%) and three patients (1.5%), respectively. Gene fusions were reported in five patients (2.5%); specifically, three were rearrangements of *RET*, one was of *ALK*, and one was of *NTRK*. Mutations of *PI3KCA* exon 20 were found in 10 patients (5.0%); of *PTEN*, in six (3.0%); and of *AKT1*, in two (1%). RAS mutations with low MAF ($< 5\%$) occurred in 15 patients (7.5%). Overall, MSI-high status was detected in five patients (2.5%), of whom two (40%) had disease associated with specific PRESSING alterations and only one (20%) had right sidedness.

Regarding the associations between baseline characteristics and tumor sidedness or PRESSING panel, no significant associations were observed except for older age in right-sided tumors ($P = .02$). A borderline correlation was observed between primary tumor sidedness and PRESSING panel, with a higher rate of PRESSING positivity in right-sided tumors (37.9%) versus left-sided ones (22.3%; $P = .07$; Table 1).

At the time of this analysis (cutoff on March 30, 2019), the median follow-up was 26 months (95% CI, 24.6 to 29 months). A total of 167 disease progressions and 85 deaths occurred. Appendix Figures A2A and A2B (online only)

depict, respectively, the PFS (median, 11.1 months) and OS (median, 30.7 months; 2-year OS rate, 63%) curves in the whole-study population.

Response Analyses According to Sidedness and PRESSING Panel

The ORR in the study population was 75.5% (95% CI, 68.4% to 81.5%). According to sidedness, the ORR was 74.1% (95% CI, 66.9% to 80.5%) and 55.2% (95% CI, 35.7% to 73.6%) in left- and right-sided tumors, respectively (odds ratio [OR], 0.43; 95% CI, 0.19 to 0.99; $P = .037$; Appendix Fig A3A, online only). In PRESSING panel-negative and -positive tumors, the ORR was 75.3% (95% CI, 67.6% to 82.0%) and 59.2% (95% CI, 44.2% to 73.0%), respectively (OR, 0.48; 95% CI, 0.24 to 0.95; $P = .030$; Appendix Fig A3B). The ORR for patients with PRESSING-positive versus -negative tumors was 77.3% versus 63.2% (OR, 0.51; 95% CI, 0.23 to 1.12; $P = .080$) in the left-sided subgroup and was 45.6% versus 61.1% (OR, 0.55; 95% CI, 0.11 to 2.57; $P = .466$) in the right-sided subgroup (Appendix Fig A3C). Appendix Table A2 (online only) provides information on sidedness, specific PRESSING panel alterations, and RECIST response at individual patient level. Appendix Table A3 (online only) and Appendix Figure A4 (online only) summarize the results in terms of depth of response and duration of response, respectively, according to sidedness, PRESSING panel status, or both.

Prognostic Analyses According to Sidedness and PRESSING Panel

The PFS was lower in the right-sided versus left-sided subgroup (median PFS, 8.4 v 11.5 months; hazard ratio [HR], 1.60; 95% CI, 1.06 to 2.42; $P = .026$; Fig 2A), as was OS (2-year OS, 50.2% v 65.1%; HR, 1.71; 95% CI, 0.97 to 2.99; $P = .062$; Fig 2B). In parallel, PFS was lower in the PRESSING-positive versus PRESSING-negative subgroup (median PFS, 7.7 v 12.1 months; HR, 1.90; 95% CI, 1.35 to 2.67; $P < .001$; Fig 2C) as well as OS (2-year OS, 48.1% v 68.1%; HR, 1.71, 95% CI, 1.09 to 2.69; $P = .021$; Fig 2D). The median PFS of patients with PRESSING-positive versus PRESSING-negative tumors was 7.8 versus 13.2 months (HR, 2.01; 95% CI, 1.37 to 2.94; $P < .001$) in the left-sided subgroup, and it was 7.7 versus 8.6 months (HR, 1.40; 95% CI, 0.64 to 3.06; $P = .399$) in the right-sided subgroup (Fig 2E). Consistent results were observed in terms of OS: the 2-year OS of patients with PRESSING-positive versus -negative tumors was 49.9% versus 69.7% (HR, 1.78; 95% CI, 1.08 to 2.95; $P = .025$) in the left-sided subgroup and was 40.9% versus 55.6% (HR, 1.16; 95% CI, 0.41 to 3.25; $P = .786$) in the right-sided subgroup (Fig 2F). Finally, PFS was lower in the MSI-high versus microsatellite-stable subgroup (median PFS, 4.1 v 11.1 months; HR, 3.03; 95% CI, 1.24 to 7.42; $P = .015$; Appendix Fig A5A, online only), whereas OS was similar in the two subgroups (2-year OS, 60.0% v

TABLE 1. Baseline Characteristics in the Overall Population and According to Sidedness PRESSING Panel Status

Characteristic	Data for All Patients (N = 199)	Data by Sidedness		P	Data by PRESSING Status		P
		Left (n = 170)	Right (n = 29)		Negative (n = 150)	Positive (n = 49)	
Median age, years (IQR)	62 (54-69)	62 (54-68)	68 (61-71)	.021	63 (55-69)	61 (52-69)	.389
Sex				.342			.602
Female	67 (33.7)	55 (32.3)	12 (41.4)		52 (34.7)	15 (30.6)	
Male	132 (66.3)	115 (67.7)	17 (58.6)		98 (65.3)	34 (69.4)	
ECOG PS				.300			.468
0	146 (73.4)	127 (74.7)	19 (65.5)		112 (74.7)	34 (69.4)	
1	53 (26.6)	43 (25.3)	10 (34.5)		38 (25.3)	15 (30.6)	
Prior adjuvant treatment				.138			.107
Yes	27 (13.6)	26 (15.3)	1 (3.4)		17 (11.3)	10 (20.4)	
No	172 (86.4)	144 (84.7)	28 (96.6)		133 (88.7)	39 (79.6)	
Primary tumor resected				.495			.993
Yes	126 (63.3)	106 (62.4)	20 (69.0)		95 (63.3)	31 (63.3)	
No	73 (36.7)	64 (37.6)	9 (31.0)		55 (36.7)	18 (36.7)	
Liver-limited disease				.07			.394
Yes	71 (35.7)	65 (38.2)	6 (20.7)		56 (37.3)	15 (30.6)	
No	128 (64.3)	105 (61.8)	23 (79.3)		94 (62.7)	34 (69.4)	
Synchronous metastases				.124			.060
Yes	157 (78.9)	131 (77.1)	26 (89.7)		123 (82.0)	34 (69.4)	
No	42 (21.1)	39 (22.9)	3 (10.3)		27 (18.0)	15 (30.6)	
No. of metastatic sites				.634			.270
1	111 (55.8)	96 (56.5)	15 (51.7)		87 (58.0)	24 (49.0)	
> 1	88 (44.2)	74 (43.5)	14 (48.3)		63 (42.0)	25 (51.0)	
Treatment arm				.734			.841
Panitumumab	95 (47.7)	82 (48.2)	13 (44.8)		71 (47.3)	24 (49.0)	
Panitumumab plus FU + LV	104 (52.3)	88 (51.8)	16 (55.2)		79 (52.7)	25 (51.0)	
Primary tumor sidedness				—			.072
Left	170 (85.4)	—	—		132 (88.0)	38 (77.6)	
Right	29 (14.6)	—	—		18 (12.0)	11 (22.4)	
PRESSING panel				.072			—
Negative	150 (75.4)	132 (77.7)	18 (62.1)		—	—	
Positive	49 (24.6)	38 (22.3)	11 (37.9)		—	—	

NOTE. Data presented as No. (%) unless otherwise indicated.

Abbreviations: ECOG PS, Eastern Cooperative Oncology Group performance status; FU + LV, fluorouracil plus leucovorin; IQR, interquartile range; PRESSING, primary resistance in *RAS* and *BRAF* wild-type metastatic colorectal cancer patients treated with anti-EGFR monoclonal antibodies.

62.9%; HR, 1.23; 95% CI, 0.38 to 3.92; $P = .732$; Appendix Fig A5B, online only).

In the univariable analysis for PFS, ECOG PS, number of metastatic sites (one *v* more than one), MSI status, primary tumor sidedness, and PRESSING panel were significantly associated with PFS; however, only ECOG PS (0 *v* 1), number of metastatic sites (one *v* more than one), and PRESSING panel confirmed their prognostic value in the multivariable model, whereas sidedness lost

its significance. Similarly, in the univariable analysis for OS, ECOG PS, prior adjuvant treatment, number of metastatic sites, and PRESSING panel were significantly associated with OS; ECOG PS, prior adjuvant treatment, and PRESSING panel were confirmed in the multivariable model. In particular, the strongest association with poor PFS and OS was reported in the multivariable models for PRESSING-positive tumors ($P < .001$ and $P = .007$, respectively; Table 2).

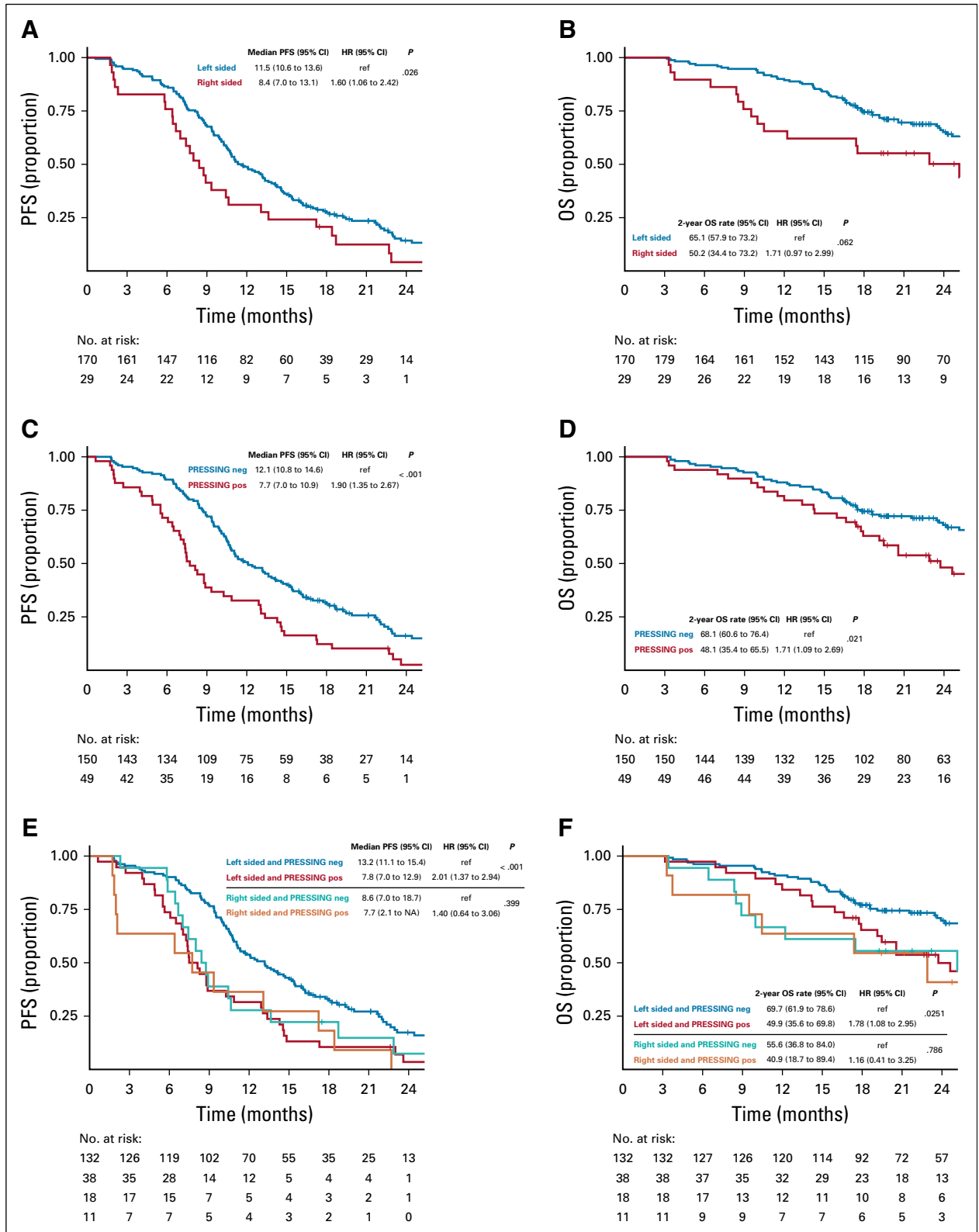


FIG 2. Prognostic analysis according to tumor sidedness and primary resistance in *RAS* and *BRAF* wild-type metastatic colorectal cancer patients treated with anti-EGFR monoclonal antibodies (PRESSING) panel status: Kaplan-Meier curves for (A) progression-free survival (PFS) and (B) overall survival (OS) in patients stratified according to tumor sidedness; (C) PFS and (D) OS according to PRESSING panel status; and (E) PFS and (F) OS according to the combined analysis. HR, hazard ratio; NA, not assessable; ref, reference.

TABLE 2. Univariable and Multivariable Cox Proportional Hazard Regression Models for PFS and OS

Variable	PFS				OS			
	Univariable Analysis		Multivariable Model		Univariable Analysis		Multivariable Model	
	HR (95% CI)	P	HR (95% CI)	P	HR (95% CI)	P	HR (95% CI)	P
Median age, years (IQR)	0.99 (0.98-1.01)	.686			1.02 (0.99-1.04)	.124		
Sex		.676				.738		
Female	Reference				Reference			
Male	0.93 (0.67 to 1.29)				1.08 (0.68 to 1.71)			
ECOG PS		.033		.036		.0003		< .001
0	Reference		Reference		Reference		Reference	
1	1.44 (1.03 to 2.03)		1.45 (1.03 to 2.05)		2.25 (1.45 to 3.48)		2.32 (1.49 to 3.60)	
Prior adjuvant treatment		.072		.071		.011		.003
No	Reference		Reference		Reference		Reference	
Yes	0.66 (0.42 to 1.04)		0.66 (0.42 to 1.04)		0.34 (0.15 to 0.77)		2.27 (0.11 to 0.64)	
Primary tumor resected		.399				.419		
No	Reference				Reference			
Yes	0.87 (0.64 to 1.20)				0.84 (0.54 to 1.29)			
Liver-limited disease		.274				.254		
No	Reference				Reference			
Yes	0.84 (0.61 to 1.15)				0.77 (0.49 to 1.21)			
Synchronous metastases		.316				.157		
No	Reference				Reference			
Yes	1.21 (0.84 to 1.74)				1.50 (0.86 to 2.62)			
No. of metastatic sites		.003		.005		.036		.055
1	Reference		Reference		Reference		Reference	
> 1	1.59 (1.17 to 2.16)		1.58 (1.15 to 2.17)		1.58 (1.03 to 2.42)		1.53 (0.99 to 2.35)	
Treatment arm		.062		.013		.878		
Panitumumab plus FU + LV	Reference		Reference		Reference			
Panitumumab	1.34 (0.99 to 1.82)		1.50 (1.09 to 2.06)		0.97 (0.63 to 1.48)			
MSI status		.015		.626		.732		
MSS	Reference		Reference		Reference			
MSI high	3.03 (1.24 to 7.42)		1.28 (0.47 to 3.47)		1.23 (0.38 to 3.92)			
Primary tumor sidedness		.026		.175		.062		.214
Left	Reference		Reference		Reference		Reference	
Right	1.60 (1.06 to 2.42)		1.36 (0.87 to 2.13)		1.71 (0.97 to 2.99)		1.44 (0.81 to 2.55)	
PRESSING panel		< .001		< .001		.021		.007
Negative	Reference		Reference		Reference		Reference	
Positive	1.90 (1.35 to 2.67)		2.03 (1.41 to 2.92)		1.71 (1.09 to 2.69)		1.89 (1.19 to 3.01)	

Abbreviations: ECOG PS, Eastern Cooperative Oncology Group performance status; FU + LV, fluorouracil plus leucovorin; HR, hazard ratio; IQR, interquartile range; MSI, microsatellite instability; MSS, microsatellite stable; OS, overall survival; PFS, progression-free survival; PRESSING, primary resistance in *RAS* and *BRAF* wild-type metastatic colorectal cancer patients treated with anti-EGFR monoclonal antibodies.

TABLE 3. Predictive Analyses According to Sidedness and PRESSING Panel Status

Survival Data by Sidedness and PRESSING Panel Status	Left-Sided Tumors				Right-Sided Tumors				Interaction Test	
	Arm A	Arm B	HR (95% CI)	P	Arm A	Arm B	HR (95% CI)	P	P	P
Sidedness										
Median PFS, months (95% CI)	13.0 (10.8 to 15.4)	10.8 (10.0 to 13.2)	1.30 (0.93 to 1.81)	.128	9.9 (6.4 to 22.7)	7.7 (6.4 to NA)	1.89 (0.82 to 4.37)	.135		.293
2-year OS rate, %	65.5 (56.0 to 76.7)	64.5 (54.0 to 77.1)	0.84 (0.52 to 1.35)	.463	60.2 (39.5 to 91.7)	38.5 (19.3 to 76.5)	2.02 (0.73 to 5.60)	.178		.068
PRESSING										
PRESSING Negative										
Median PFS, months (95% CI)	13.2 (10.6 to 17.8)	11.6 (10.6 to 13.9)	1.24 (0.86 to 1.77)	.253	12.9 (7.3 to 14.6)	7.4 (6.4 to 8.8)	1.85 (1.01 to 3.40)	.047		.127
2-year OS rate, %	70.1 (60.5 to 81.2)	65.5 (54.4 to 79.0)	0.86 (0.51 to 1.46)	.588	50.6 (34.0 to 75.4)	47.0 (30.0 to 73.8)	1.26 (0.60 to 2.66)	.543		.450

Abbreviations: HR, hazard ratio; NA, not assessable; OS, overall survival; PFS, progression-free survival; PRESSING, primary resistance in RAS and BRAF wild-type metastatic colorectal cancer patients treated with anti-EGFR monoclonal antibodies.

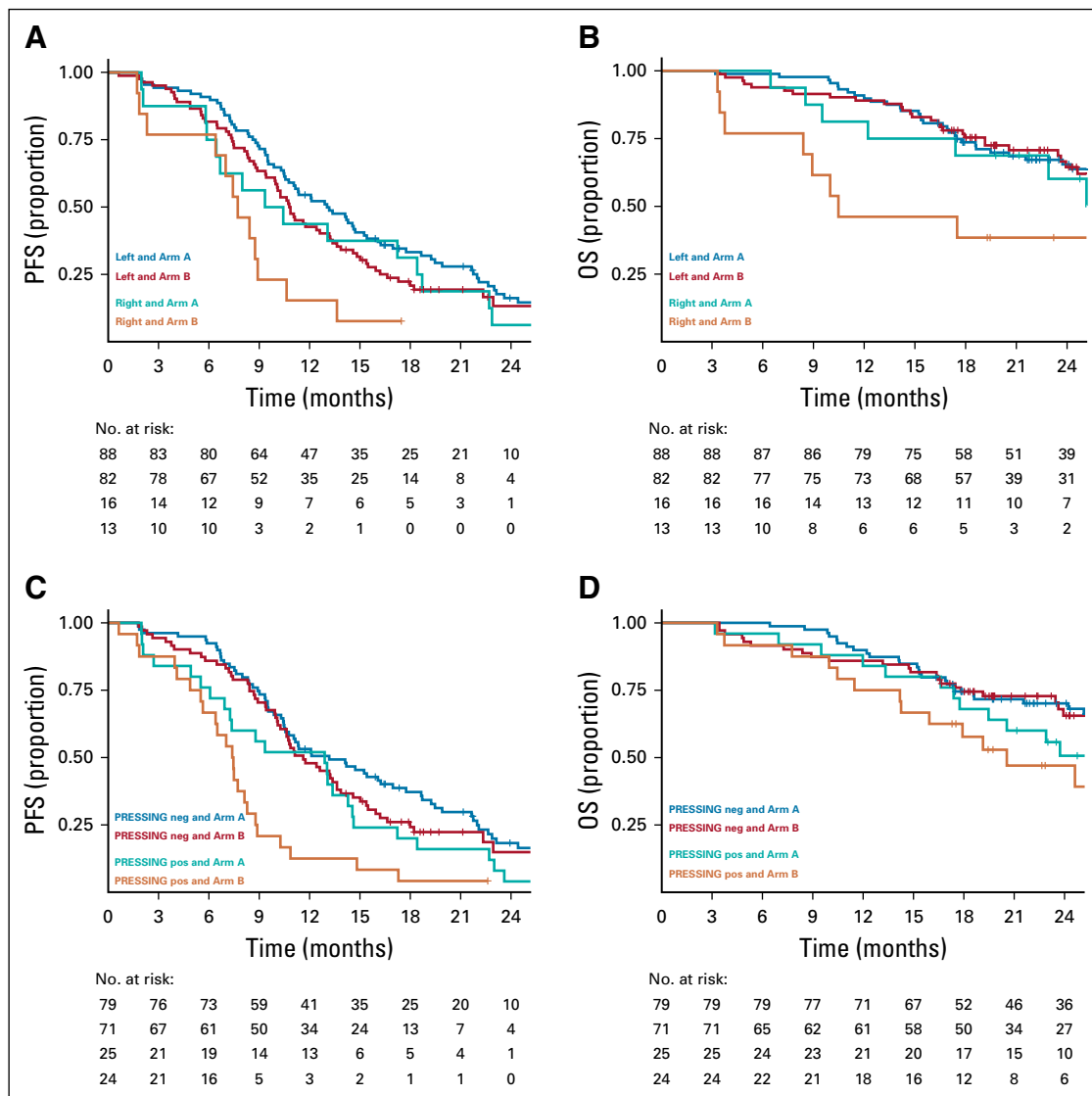


FIG 3. Predictive analysis according to tumor sidedness and primary resistance in *RAS* and *BRAF* wild-type metastatic colorectal cancer patients treated with anti-EGFR monoclonal antibodies (PRESSING) panel status: Kaplan-Meier curves for (A) progression-free survival (PFS) and (B) overall survival (OS) in patients stratified according to the two different maintenance treatment arms and sidedness (right- v left-sided tumors) and for (C) PFS and (D) OS according to treatment arm and PRESSING panel status (positive [pos] v negative [neg]).

Conversely, sidedness was no longer significant, again possibly because of the low number of right-sided tumors. Consistent with the literature,^{13,19} MSI-high status was associated with poor PFS outcome at the univariable analysis, although the number of MSI-high occurrences in this data set was quite small (only five patients) and did not allow us to properly assess its independent prognostic role. The type of maintenance treatment retained its value in terms of PFS but not OS; this result has been already reported¹¹ and may be due to the low number of OS events at the time of data cutoff and to the underpowered sample size.

Interestingly, we observed that ORR and depth of response were numerically increased in patients with right-sided/

PRESSING-negative versus right-sided/PRESSING-positive tumors. A similar role of the PRESSING panel was observed in the left-sided subgroup. However, in the specific subgroup of patients with right-sided tumors, the increase of response rate achieved thanks to negative hyperselection failed to translate into a benefit in terms of duration of response, PFS, or OS. This is in line with post hoc analyses of pivotal trials and meta-analyses that investigated the impact of sidedness on ORR versus survival end points in patients with *RAS* wild-type mCRC who received anti-EGFR-based treatment.^{8,20,21} On the basis of such results, an anti-EGFR-based first-line treatment rarely may be offered on an individual basis to patients with right-sided *RAS* wild-type mCRC, at least whenever tumor response is

the primary goal of treatment and particularly when anti-angiogenics and/or triplet chemotherapy are contraindicated. Given the higher prevalence of PRESSING panel alterations in right-sided tumors, the role of negative molecular hyperselection may be crucial for some patients with *RAS* and *BRAF* wild-type/right-sided tumors.

Furthermore, the PFS benefit of FU plus LV added to panitumumab in the maintenance setting was independent from sidedness and PRESSING panel status, which thus confirmed the crucial role of fluoropyrimidine continuation in the maintenance setting. However, PFS was extremely poor in patients with right-sided or PRESSING-positive disease treated with single-agent panitumumab, with an abrupt decrease of the curves after 4 months (which corresponded to the end of the induction phase). This result highlights that single-agent anti-EGFRs should not be regarded as an effective maintenance treatment strategy in disease subgroups with a lack of clinically or molecularly defined EGFR dependency. In these subgroups, de-escalation to a fully chemotherapy-free maintenance strategy was associated with a significant loss of efficacy, and, in patients with right-sided mCRC (which is itself associated with poorer outcomes²²), a detrimental effect was observed even in terms of OS.

This study has some clear limitations. First of all, because both maintenance treatment arms contained panitumumab, we could not investigate the predictive role of tumor sidedness and PRESSING panel status with regard to anti-EGFR therapy. However, because FU plus LV was administered only in arm A, we could identify a subgroup of patients (ie, right-sided and/or PRESSING-positive disease) who derived a limited benefit from single-agent panitumumab, which confirmed the fundamental role of chemotherapy for maintenance treatment and suggested the limited clinical benefit from anti-EGFR treatment itself in these subsets. Most important, the results of this study should be interpreted with caution, because the role of anti-EGFR therapy added to FU/LV in the maintenance setting is still not established by level I evidence. This is particularly relevant in light of the current lack of comparison with other evidence-based maintenance options that have better long-term tolerability, such as FU plus LV with or

without bevacizumab. Ongoing studies, such as Panama (ClinicalTrials.gov identifier: [NCT01991873](#)) and FIRE-4 (ClinicalTrials.gov identifier: [NCT02934529](#)), we hope will address the still-unanswered questions with their adequate randomized settings.

Also, we acknowledge that, although tumor sidedness is a simple, clearly definable and homogeneous variable, the PRESSING panel is a composite biomarker that includes several genomic alterations. Therefore, each genomic alteration may constitute a single marker, endowed with a potential differential prognostic and/or predictive effect, and our results do not distinguish the relative contribution of individual variables because of the extremely low prevalence of each. The complex molecular interactions of these candidate genomic alterations in the neoplastic signaling pathways and their low prevalences limit their formal validation in prospective clinical studies or in post hoc analyses of randomized clinical trials as negative predictive markers for response to EGFR-targeted therapies, and this limitation may impair their implementation in the tumor profiling work-up, even if many of them are validated therapeutic targets.^{10,14-16,23-29} Regarding *RAS* mutations with an MAF less than the 5% cutoff, which was validated for negative selection of patients for anti-EGFRs, it is still unclear whether mutations with low fractional abundance simply mirror tumor heterogeneity that may be overcome by novel techniques, such as liquid biopsy,³⁰ or may be associated with the rapid onset of acquired resistance and limited long-term PFS benefit under the selective pressure of anti-EGFR agents continued until disease progression develops.³¹

In conclusion, even if patients with left-sided, *RAS* and *BRAF* wild-type tumors currently are considered the optimal candidates for EGFR inhibitors,³ a consistent proportion of them achieve a significantly inferior clinical benefit from upfront anti-EGFR-based regimens, particularly after de-escalation to maintenance treatment with single-agent anti-EGFRs. A negative molecular hyperselection with our PRESSING panel, added to the initial assessment of sidedness and *RAS/BRAF* mutational status, may help identify a subgroup of patients who will exceptionally benefit from anti-EGFR-based initial therapy.

AFFILIATIONS

¹Fondazione Istituto di Ricovero e Cura Carattere Scientifico (IRCCS) Istituto Nazionale dei Tumori, Milan, Italy

²Istituto Oncologico Veneto, IRCCS, Padua, Italy

³University of Pisa, Pisa, Italy

⁴Humanitas Cancer Center, IRCCS, Rozzano, Italy

⁵University of Genoa and IRCCS Azienda Ospedaliera Universitaria (AOU) San Martino-IST, Genoa, Italy

⁶Fondazione Poliambulanza, Brescia, Italy

⁷Niguarda Cancer Center, Milan, Italy

⁸University of Milan, Milan, Italy

⁹Azienda Socio-Sanitaria Territoriale Ospedale di Cremona, Cremona, Italy

¹⁰AOU Città della Salute e della Scienza di Torino, Torino, Italy

¹¹Ente Ospedaliero Ospedali Galliera, Genoa, Italy

¹²University of Messina, Messina, Italy

CORRESPONDING AUTHOR

Filippo Pietrantonio, MD, Oncology and Hemato-oncology Department, University of Milan, via Festa del Perdono 7, 20122 Milan, Italy, and Department of Medical Oncology, Fondazione IRCCS Istituto Nazionale dei Tumori, via Giacomo Venezian 1, 20133 Milan, Italy; e-mail: filippo.pietrantonio@istitutotumori.mi.it.

PRIOR PRESENTATION

Presented in part as a poster discussion at the European Society for Medical Oncology 2018 Congress, Munich, Germany, October 12-23, 2018, and as an oral presentation at the Associazione Italiana di Oncologia Medica National Congress 2018, Rome, Italy, November 16-18, 2018.

SUPPORT

Supported in part with a research grant and drug supply during panitumumab-based maintenance treatment by Amgen.

AUTHORS' DISCLOSURES OF POTENTIAL CONFLICTS OF INTEREST AND DATA AVAILABILITY STATEMENT

Disclosures provided by the authors and data availability statement (if applicable) are available with this article at DOI <https://doi.org/10.1200/JCO.19.01254>.

AUTHOR CONTRIBUTIONS

Conception and design: Federica Morano, Filippo de Braud, Filippo Pietrantonio

Provision of study material or patients: Sara Lonardi, Chiara Cremolini, Lorenza Rimassa, Alberto Zaniboni, Andrea Sartore-Bianchi, Roberto

Murialdo, Gianluca Tomasello, Patrizia Racca, Matteo Clavarezza, Vincenzo Adamo, Fotios Loupakis

Collection and assembly of data: Federica Morano, Salvatore Corallo, Sara Lonardi, Chiara Cremolini, Lorenza Rimassa, Roberto Murialdo, Alberto Zaniboni, Andrea Sartore-Bianchi, Gianluca Tomasello, Patrizia Racca, Vincenzo Adamo, Federica Perrone, Elena Tamborini, Adele Busico, Antonia Martinetti, Federica Palermo, Fotios Loupakis, Massimo Milione, Maria Di Bartolomeo, Filippo Pietrantonio

Data analysis and interpretation: Federica Morano, Salvatore Corallo, Alessandra Raimondi, Matteo Clavarezza, Federica Perrone, Annunziata Gloghini, Elena Tamborini, Fotios Loupakis, Massimo Milione, Giovanni Cucà, Filippo Pietrantonio

Manuscript writing: All authors

Final approval of manuscript: All authors

Accountable for all aspects of the work: All authors

ACKNOWLEDGMENT

We thank all of the patients who agreed to take part in the trial. We also thank the investigators and the study teams who participated.

REFERENCES

1. Van Cutsem E, Lenz HJ, Köhne CH, et al: Fluorouracil, leucovorin, and irinotecan plus cetuximab treatment and *RAS* mutations in colorectal cancer. *J Clin Oncol* 33:692-700, 2015
2. Van Cutsem E, Cervantes A, Adam R, et al: ESMO consensus guidelines for the management of patients with metastatic colorectal cancer. *Ann Oncol* 27:1386-1422, 2016
3. National Comprehensive Cancer Network: Colon cancer (version 1.2019). https://www.nccn.org/professionals/physician_gls/pdf/colon.pdf.
4. Van Cutsem E, Köhne CH, Láng I, et al: Cetuximab plus irinotecan, fluorouracil, and leucovorin as first-line treatment for metastatic colorectal cancer: Updated analysis of overall survival according to tumor *KRAS* and *BRAF* mutation status. *J Clin Oncol* 29:2011-2019, 2011
5. Venook AP, Niedzwiecki D, Lenz HJ, et al: Effect of first-line chemotherapy combined with cetuximab or bevacizumab on overall survival in patients with *KRAS* wild-type advanced or metastatic colorectal cancer: A randomized clinical trial. *JAMA* 317:2392-2401, 2017
6. Heinemann V, von Weikersthal LF, Decker T, et al: FOLFIRI plus cetuximab versus FOLFIRI plus bevacizumab as first-line treatment for patients with metastatic colorectal cancer (FIRE-3): A randomised, open-label, phase 3 trial. *Lancet Oncol* 15:1065-1075, 2014
7. Douillard JY, Oliner KS, Siena S, et al: Panitumumab-FOLFOX4 treatment and *RAS* mutations in colorectal cancer. *N Engl J Med* 369:1023-1034, 2013
8. Arnold D, Lueza B, Douillard JY, et al: Prognostic and predictive value of primary tumour side in patients with *RAS* wild-type metastatic colorectal cancer treated with chemotherapy and *EGFR* directed antibodies in six randomized trials. *Ann Oncol* 28:1713-1729, 2017
9. Holch JW, Ricard I, Stintzing S, et al: The relevance of primary tumour location in patients with metastatic colorectal cancer: A meta-analysis of first-line clinical trials. *Eur J Cancer* 70:87-98, 2017
10. Cremolini C, Morano F, Moretto R, et al: Negative hyper-selection of metastatic colorectal cancer patients for anti-EGFR monoclonal antibodies: The PRESSING case-control study. *Ann Oncol* 28:3009-3014, 2017
11. Pietrantonio F, Morano F, Corallo S, et al: Maintenance therapy with panitumumab alone vs panitumumab plus fluorouracil-leucovorin in patients with *RAS* wild-type metastatic colorectal cancer: A phase 2 randomized clinical trial. *JAMA Oncol* doi:10.1001/jamaoncol.2019.1467 [epub ahead of print on July 3, 2019]
12. Dienstmann R, Elez E, Argiles G, et al: Analysis of mutant allele fractions in driver genes in colorectal cancer: Biological and clinical insights. *Mol Oncol* 11:1263-1272, 2017
13. Innocenti F, Ou FS, Qu X, et al: Mutational analysis of patients with colorectal cancer in CALGB/SWOG 80405 identifies new roles of microsatellite instability and tumor mutational burden for patient outcome. *J Clin Oncol* 37:1217-1227, 2019
14. Pietrantonio F, Di Nicolantonio F, Schrock AB, et al: *ALK*, *ROS1*, and *NTRK* rearrangements in metastatic colorectal cancer. *J Natl Cancer Inst* 109:djx089, 2017
15. Pietrantonio F, Di Nicolantonio F, Schrock AB, et al: *RET* fusions in a small subset of advanced colorectal cancers at risk of being neglected. *Ann Oncol* 29:1394-1401, 2018
16. Sartore-Bianchi A, Trusolino L, Martino C, et al: Dual-targeted therapy with trastuzumab and lapatinib in treatment-refractory, *KRAS* codon 12/13 wild-type, HER2-positive metastatic colorectal cancer (HERACLES): A proof-of-concept, multicentre, open-label, phase 2 trial. *Lancet Oncol* 17:738-746, 2016
17. Guinney J, Dienstmann R, Wang X, et al: The consensus molecular subtypes of colorectal cancer. *Nat Med* 21:1350-1356, 2015
18. Laurent-Puig P, Grisoni ML, Heinemann V, et al: Validation of miR-31-3p expression to predict cetuximab efficacy when used as first-line treatment in *RAS* wild-type metastatic colorectal cancer. *Clin Cancer Res* 25:134-141, 2019
19. Lenz H-J, Ou F-S, Venook AP, et al: Impact of consensus molecular subtype on survival in patients with metastatic colorectal cancer: Results from CALGB/SWOG 80405 (alliance). *J Clin Oncol* 37:1876-1885, 2019
20. Tejpar S, Stintzing S, Ciardiello F, et al: Prognostic and predictive relevance of primary tumor location in patients with *RAS* wild-type metastatic colorectal cancer: Retrospective analyses of the CRYSTAL and FIRE-3 trials. *JAMA Oncol* 3:194-201, 2017
21. Qin S, Li J, Wang L, et al: Efficacy and tolerability of first-line cetuximab plus leucovorin, fluorouracil, and oxaliplatin (FOLFOX-4) versus FOLFOX-4 in patients with *RAS* wild-type metastatic colorectal cancer: The open-label, randomized, phase III TAILOR trial. *J Clin Oncol* 36:3031-3039, 2018

22. Petrelli F, Tomasello G, Borgonovo K, et al: Prognostic survival associated with left-sided vs right-sided colon cancer: A systematic review and meta-analysis. *JAMA Oncol* 3:211-219, 2017
23. De Roock W, Claes B, Bernasconi D, et al: Effects of *KRAS*, *BRAF*, *NRAS*, and *PIK3CA* mutations on the efficacy of cetuximab plus chemotherapy in chemotherapy-refractory metastatic colorectal cancer: A retrospective consortium analysis. *Lancet Oncol* 11:753-762, 2010
24. Yonesaka K, Zejnullahu K, Okamoto I, et al: Activation of *ERBB2* signaling causes resistance to the EGFR-directed therapeutic antibody cetuximab. *Sci Transl Med* 3:99ra86, 2011
25. Bardelli A, Corso S, Bertotti A, et al: Amplification of the MET receptor drives resistance to anti-EGFR therapies in colorectal cancer. *Cancer Discov* 3:658-673, 2013
26. Perrone F, Lampis A, Orsenigo M, et al: *PI3KCA/PTEN* deregulation contributes to impaired responses to cetuximab in metastatic colorectal cancer patients. *Ann Oncol* 20:84-90, 2009
27. Mao C, Liao RY, Chen Q: Loss of *PTEN* expression predicts resistance to EGFR-targeted monoclonal antibodies in patients with metastatic colorectal cancer. *Br J Cancer* 102:940, 2010
28. Overman MJ, McDermott R, Leach JL, et al: Nivolumab in patients with metastatic DNA mismatch repair-deficient or microsatellite instability-high colorectal cancer (CheckMate 142): An open-label, multicentre, phase 2 study. *Lancet Oncol* 18:1182-1191, 2017
29. Overman MJ, Lonardi S, Wong KYM, et al: Durable clinical benefit with nivolumab plus ipilimumab in DNA mismatch repair-deficient/microsatellite instability-high metastatic colorectal cancer. *J Clin Oncol* 36:773-779, 2018
30. Antoniotti C, Pietrantonio F, Corallo S, et al: Circulating tumor DNA analysis in colorectal cancer: From dream to reality. *JCO Precis Oncol* 10.1200/PO.18.00397
31. Van Emburgh BO, Arena S, Siravegna G, et al: Acquired *RAS* or *EGFR* mutations and duration of response to EGFR blockade in colorectal cancer. *Nat Commun* 7:13665, 2016



Apply for Quality Oncology Practice Initiative (QOPI[®]) Certification to Join Over 300 Certified Practices

The QOPI Certification Program provides a three-year certification for outpatient hematology-oncology practices, with the primary mission of supporting and recognizing practice improvement. Benchmarking performance against established thresholds can assist practitioners in achieving specific improvement goals. Preparing for and completing the Site Assessment stimulates an internal discussion on opportunities for practice improvement, team collaboration, and implementation of improved systems. In addition, The Doctors Company now offers a 10% premium discount to eligible physicians whose practices have achieved QOPI Certification. Learn more at qopi.asco.org

ASCO QOPI[®]
Certification Program

AUTHORS' DISCLOSURES OF POTENTIAL CONFLICTS OF INTEREST

Negative Hyperselection of Patients With *RAS* and *BRAF* Wild-Type Metastatic Colorectal Cancer Who Received Panitumumab-Based Maintenance Therapy

The following represents disclosure information provided by authors of this manuscript. All relationships are considered compensated. Relationships are self-held unless noted. I = Immediate Family Member, Inst = My Institution. Relationships may not relate to the subject matter of this manuscript. For more information about ASCO's conflict of interest policy, please refer to www.asco.org/rwc or ascopubs.org/jco/site/ffc.

Federica Morano

Honoraria: SERVIER

Travel, Accommodations, Expenses: Sanofi, SERVIER

Salvatore Corallo

Speakers' Bureau: SERVIER

Sara Lonardi

Consulting or Advisory Role: Amgen, Merck Serono, Lilly

Speakers' Bureau: Roche, Lilly, Bristol-Myers Squibb, SERVIER, Merck Serono

Research Funding: Amgen, Merck Serono

Chiara Cremolini

Honoraria: Roche, Amgen, Bayer, SERVIER

Consulting or Advisory Role: Roche, Bayer, Amgen

Speakers' Bureau: SERVIER

Research Funding: Merck

Travel, Accommodations, Expenses: Roche, SERVIER

Lorenza Rimassa

Honoraria: AstraZeneca, AbbVie, Gilead Sciences, Roche

Consulting or Advisory Role: Bayer, Sirtex Medical, Italfarmaco, Sanofi, ArQule, Baxter, Ipsen, Exelixis, Amgen, Incyte, Celgene, Eisai, Lilly, Hengrui Therapeutics, Merck Sharp & Dohme

Travel, Accommodations, Expenses: ArQule, Ipsen

Alberto Zaniboni

Consulting or Advisory Role: Amgen, SERVIER, Bayer, Merck Serono

Speakers' Bureau: SERVIER

Andrea Sartore-Bianchi

Consulting or Advisory Role: Amgen, Bayer, Sanofi

Speakers' Bureau: Amgen, Bayer, Sanofi

Travel, Accommodations, Expenses: Amgen, Bayer, Sanofi

Patrizia Racca

Honoraria: Merck Serono, Roche, Amgen, SERVIER

Matteo Clavarezza

Speakers' Bureau: Sanofi, Aventis, Amgen

Travel, Accommodations, Expenses: Roche, Genentech, Sanofi, Aventis

Fotios Loupakis

Consulting or Advisory Role: Amgen, Sanofi, Bayer

Speakers' Bureau: Roche, Sanofi, Bayer, Amgen

Research Funding: Roche (Inst), Merck Serono (Inst), Amgen (Inst), Bayer (Inst)

Travel, Accommodations, Expenses: Roche, Amgen, Merck Serono

Maria Di Bartolomeo

Honoraria: Lilly, MSD Oncology, SERVIER

Consulting or Advisory Role: Lilly, MSD Oncology

Research Funding: Lilly (Inst)

Travel, Accommodations, Expenses: Roche, Sanofi

Filippo de Braud

Consulting or Advisory Role: Ignyta, Pfizer, Amgen, Novartis, Daiichi Sankyo, Bristol-Myers Squibb, Dompè, Pierre Fabre, Roche, Octimet, Incyte, Teofarma, EMD Serono

Speakers' Bureau: Merck Sharp & Dohme, Novartis, Bristol-Myers Squibb, Roche, Pfizer, Menarini

Research Funding: Novartis (Inst), Roche (Inst), Merck Sharp & Dohme (Inst), Ignyta (Inst), MedImmune (Inst), Nektar (Inst), Bristol-Myers Squibb (Inst), Merck Serono (Inst), Bayer (Inst), Celgene (Inst), GlaxoSmithKline (Inst), Boehringer Ingelheim (Inst), Lilly (Inst), Pfizer (Inst), SERVIER (Inst)

Filippo Pietrantonio

Consulting or Advisory Role: Amgen, Merck Serono, Bayer, Lilly, Sanofi, Roche, SERVIER

No other potential conflicts of interest were reported.

APPENDIX

Supplementary Methods

The primary resistance in *RAS* and *BRAF* wild-type metastatic colorectal cancer patients treated with anti-EGFR monoclonal antibodies (PRESSING) panel analysis was performed as previously described.¹⁰ Specifically, immunohistochemistry (IHC) for *HER2/MET* and dual-color silver in situ hybridization (SISH) for both genes were carried out and scored as described previously (Pietrantonio F, et al: Clin Cancer Res 23: 2412-2422, 2017; Valtorta E, et al: Mod Pathol 28:1481-1491, 2015). In detail, IHC was performed on 3- μ m formalin-fixed paraffin-embedded (FFPE) tissue sections or on WiDr cytoclots. *MET* protein expression was detected by a rabbit monoclonal anti-MET antibody (dilution 1:200; clone SP44; Spring Bioscience, Pleasanton, CA) directed against the synthetic peptide derived from the C terminus of human MET that displayed membranous and/or cytoplasmic epitope. *HER2* expression analysis was performed using the HercepTest antibody (Agilent; Santa Clara, CA) and automatically on the automated Benchmark Ultrasystem (Ventana Medical Systems, Tucson, AZ) using the Ventana 4B5 antibody according to the manufacturers' instructions. Bright-field dual-color SISH analysis was performed on 3- μ m FFPE tissue sections using the MET DNP Probe (Ventana Medical Systems) along with the Chromosome 7 DIG Probe (Ventana Medical Systems) on a BenchMark Ultra Platform (Ventana Medical Systems) according to the manufacturer's protocol. *HER2* amplification analysis by SISH with a Ventana Medical Systems 4B5 Inform *HER2* dual color on the BenchMark Ultra system (Inform *HER2* DNA dual-color assay; Roche Tissue Diagnostics, Ventana Medical Systems). The scoring and evaluation for in situ hybridization was performed by counting *HER2* and *CEN17* signals from 100 nuclei per case. Nontumor tissue (normal colon mucosa) was used as an internal negative control. *HER2* gene amplification was defined as positive when the *HER2/CEP17* ratio was two or greater or the average number of *HER2* signals per tumor cell nucleus was more than 6, whereas *MET* amplification was defined as positive when the *MET/CEP7* ratio was two or greater or average number of *MET* signals per tumor cell nucleus was more than 6.

IHC for ALK/ROS1/panTRK/RET was carried out as screening method using standard protocols for pan-Trk (including TrkA, TrkB, TrkC; Cell Signaling, Danvers, MA; clone C17F1, 1:25 dilution), ROS1 (Cell Signaling; clone D4D6, 1:500 dilution), ALK (Cell Signaling, Danvers, MA; clone D5F3, 1:500 dilution) and RET (Abcam, Cambridge, United Kingdom; clone EPR2871). In all samples with evidence of IHC staining of any intensity/extension, whole-transcriptome shotgun sequencing (RNA-seq) was performed to confirm the presence of specific rearrangements and to identify the specific fusion partner.¹⁴

Mutational analysis was performed on FFPE specimens for each case; these were sliced in 5- μ m sections and manually microdissected to

isolate the tumor area that carried the highest percentage of neoplastic cells—identified by a pathologist on hematoxylin and eosin. A minimal tumor percentage of 10% was required; the average tumor percentage was 70% (range, 10% to 90%), and no difference of percentages was observed between sensitive and resistant samples. Samples were treated with xylene and 100% ethanol to remove paraffin, and then DNA was isolated using the GeneRead DNA FFPE kit (catalog No. 180134; Qiagen, Hilden, Germany;). DNA amount and quality were identified using Nano Drop platform and Qbit dsDNA BR kit (ThermoFisher Scientific, Waltham, MA) according to the manufacturer's instructions. Oncogenic mutations in the hotspot regions of 50 oncogenes and tumor suppressor genes commonly mutated in human cancers (Cancer Hotspot Panel v2, ThermoFisher Scientific: *ABL1*, *AKT1*, *ALK*, *APC*, *ATM*, *BRAF*, *CDH1*, *CDKN2A*, *CSF1R*, *CTNNA1*, *EGFR*, *ERBB2*, *ERBB4*, *EZH2*, *FBXW7*, *FGFR1*, *FGFR2*, *FGFR3*, *FLT3*, *GNA11*, *GNAS*, *GNAQ*, *HNF1A*, *HRAS*, *IDH1*, *IDH2*, *JAK2*, *JAK3*, *KDR/VEGFR2*, *KIT*, *KRAS*, *MET*, *MLH1*, *MPL*, *NOTCH1*, *NPM1*, *NRAS*, *PDGFRA*, *PIK3CA*, *PTEN*, *PTPN11*, *RB1*, *RET*, *SMAD4*, *SMARCB1*, *SMO*, *SRC*, *STK11*, *TP53*, *VHL*) were assessed by means of targeted next-generation sequencing through the Ion Torrent Personal Genome platform (ThermoFisher Scientific), according to the manufacturer's instructions (Pietrantonio F, et al: Ann Oncol 27:2097-2103, 2016; Pietrantonio F, et al: Clin Cancer Res 24:1082-1089, 2018).

The *BRAF* and *RAS* mutational status was centrally reassessed through targeted next-generation sequencing with deeper coverage to detect low-percentage and atypical *RAS* mutations. The fractional abundances of *BRAF* and *RAS* mutations, called mutant allele fractions (MAFs) were reported. Average sequencing depth was 1,000 \times , and mutations were defined with a minimum MAF of 3%. MAF was corrected for tumor cellularity, defined as the percentage of tissue sample occupied by tumor cells on the total amount of cells, including stromal microenvironment and inflammatory infiltrate.¹²

Microsatellite instability status (MSI) analysis was performed after DNA was extracted from each tumor block and amplified via polymerase chain reaction. The MSI status was identified using five quasi-monomorphic mononucleotide markers able to provide highly accurate determinations of the tumor MSI status from DNA: BAT-25, BAT-26, NR-21, NR-24, and MONO-27 (MSI Analysis System, version 1.2; Promega, Madison, WI). According to previous evidence, cases with instability at two or more of the five markers were classified as MSI high, whereas samples with instability at one marker and without instability were categorized as MSI low and microsatellite stable, respectively (Smyth EC, et al: JAMA Oncol 3:1197-1203, 2017).

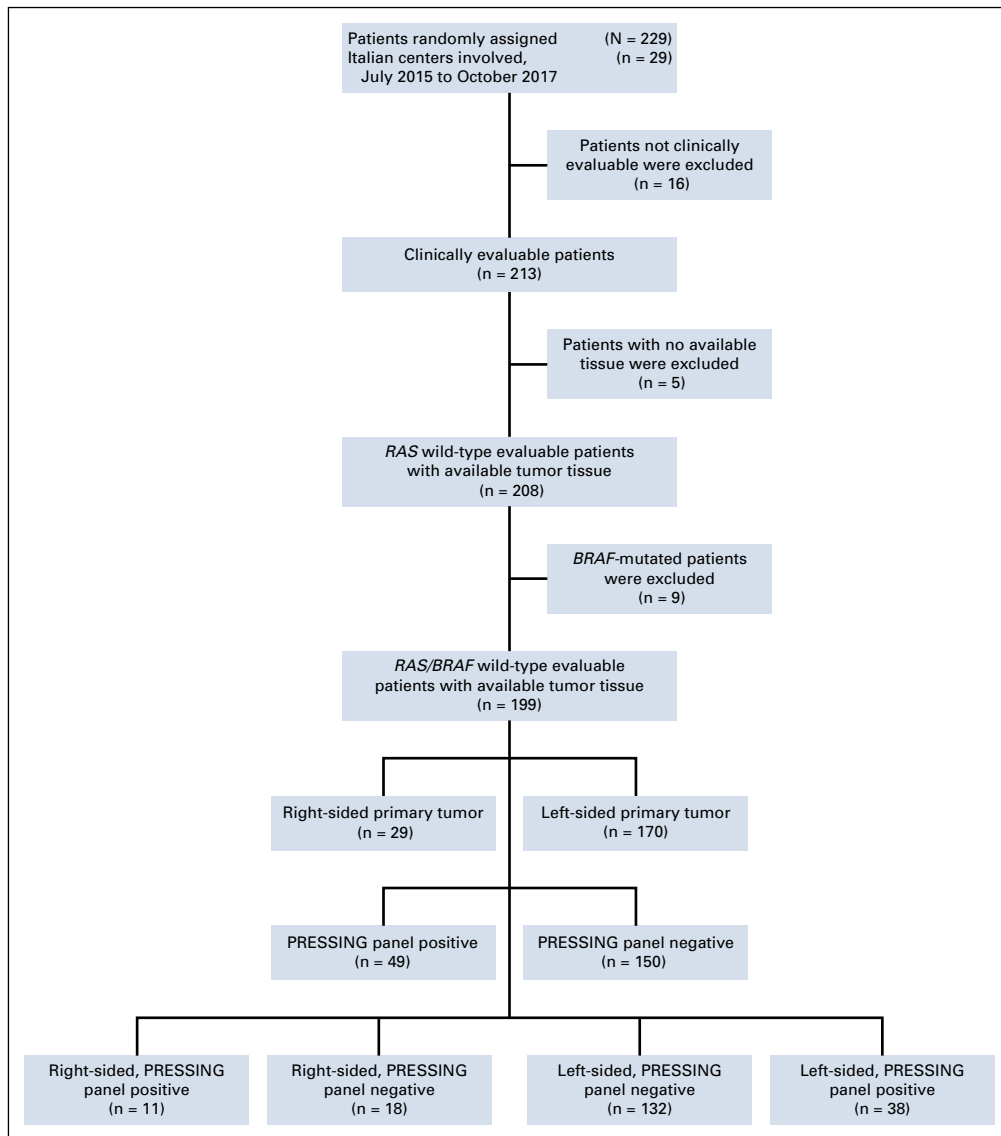


FIG A1. CONSORT diagram of the study.

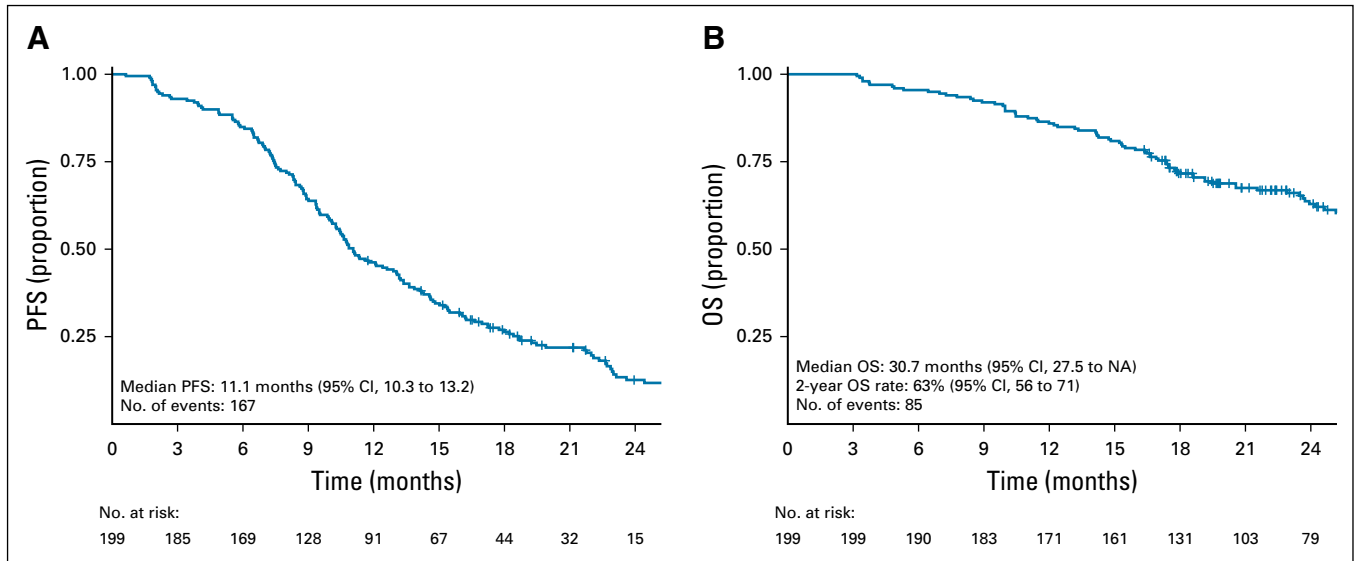


FIG A2. Survival analysis in the overall study population: (A) progression-free survival (PFS) and (B) overall survival (OS). NA, not assessable.

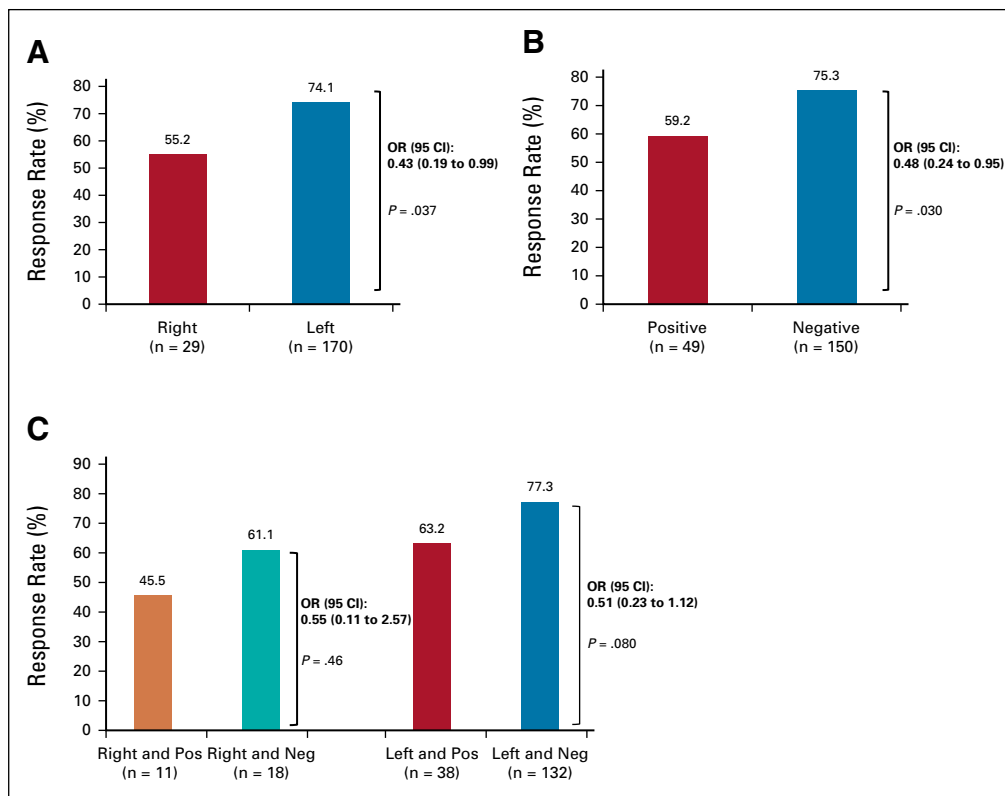


FIG A3. Activity analysis according to tumor sidedness and primary resistance in *RAS* and *BRAF* wild-type metastatic colorectal cancer patients treated with anti-EGFR monoclonal antibodies (PRESSING) panel status: overall response (OR) rate in patients stratified according to (A) sidedness, (B) PRESSING panel status, and (C) combined analysis. Neg, negative; Pos, positive.

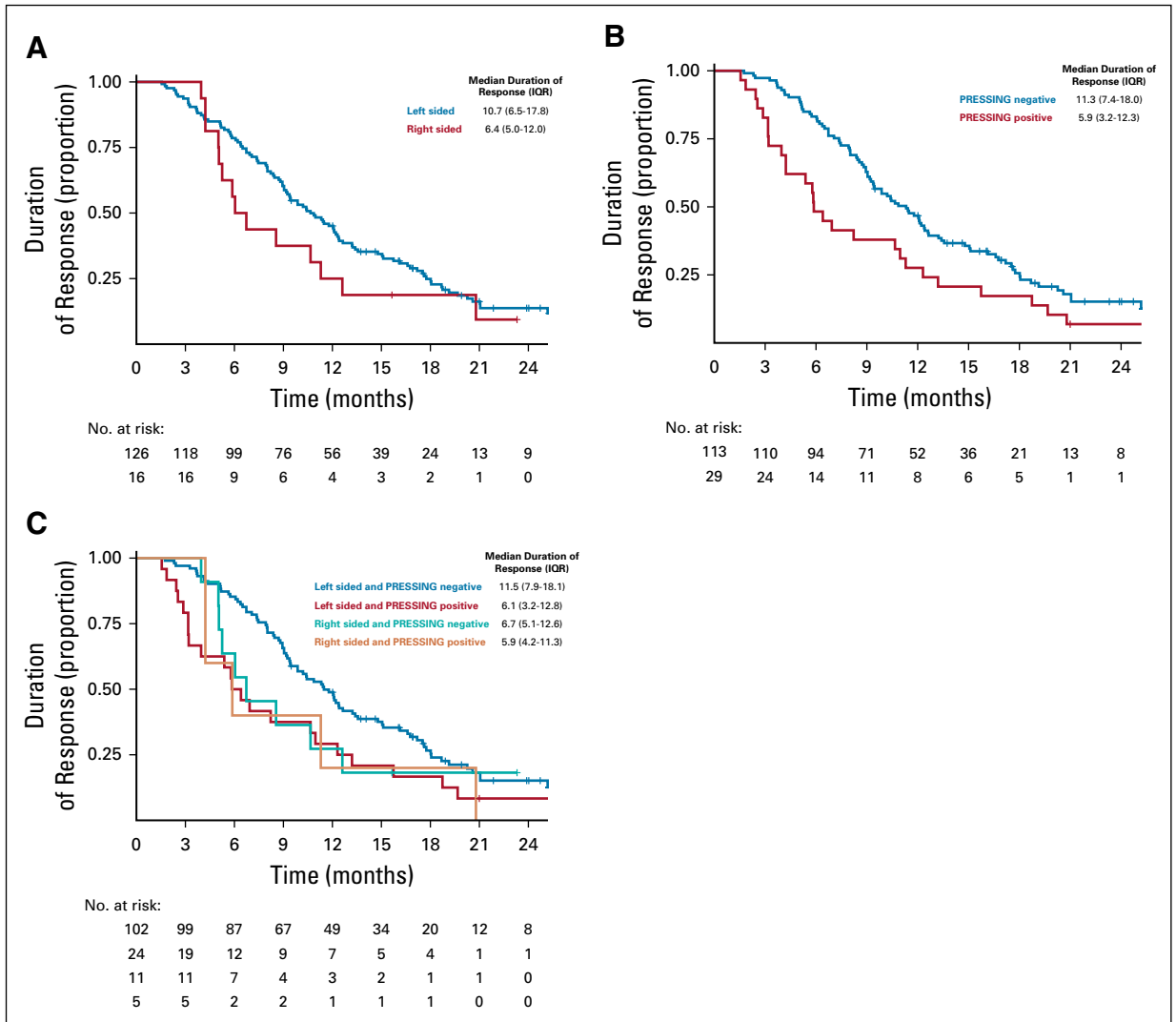


FIG A4. Duration of response analysis according to (A) sidedness: right sided and left sided in red and blue, respectively; (B) primary resistance in *RAS* and *BRAF* wild-type metastatic colorectal cancer patients treated with anti-EGFR monoclonal antibodies (PRESSING) panel status and (C) combined analysis. IQR, interquartile range; PRESSING, primary resistance in *RAS* and *BRAF* wild-type metastatic colorectal cancer patients treated with anti-EGFR monoclonal antibodies.

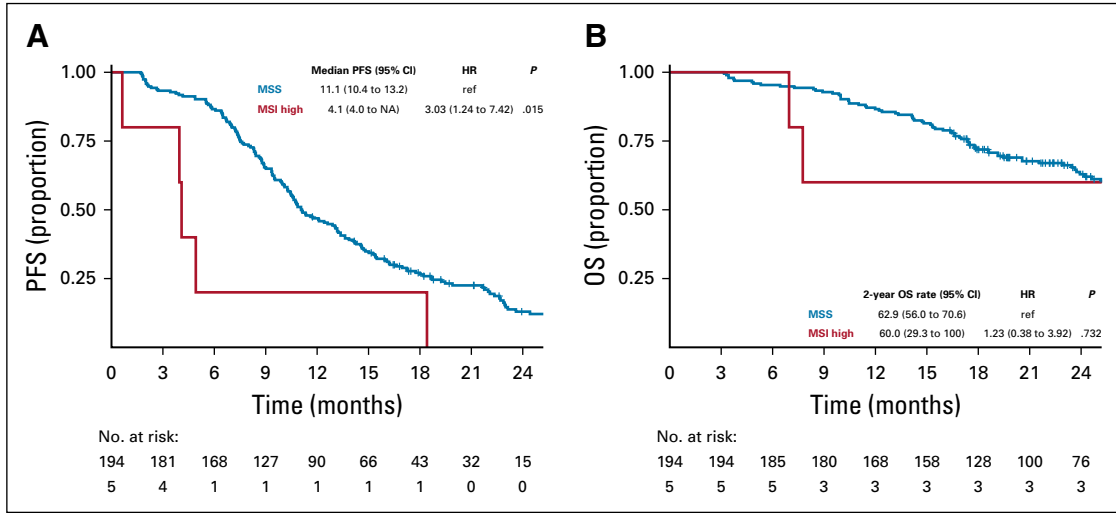


FIG A5. Prognostic analysis according to microsatellite instability (MSI) status: Kaplan-Meier curves for (A) progression-free survival (PFS) and (B) overall survival (OS) in patients stratified according to MSI status. HR, hazard ratio; MSS, microsatellite stable; NA, not assessable; ref, reference.

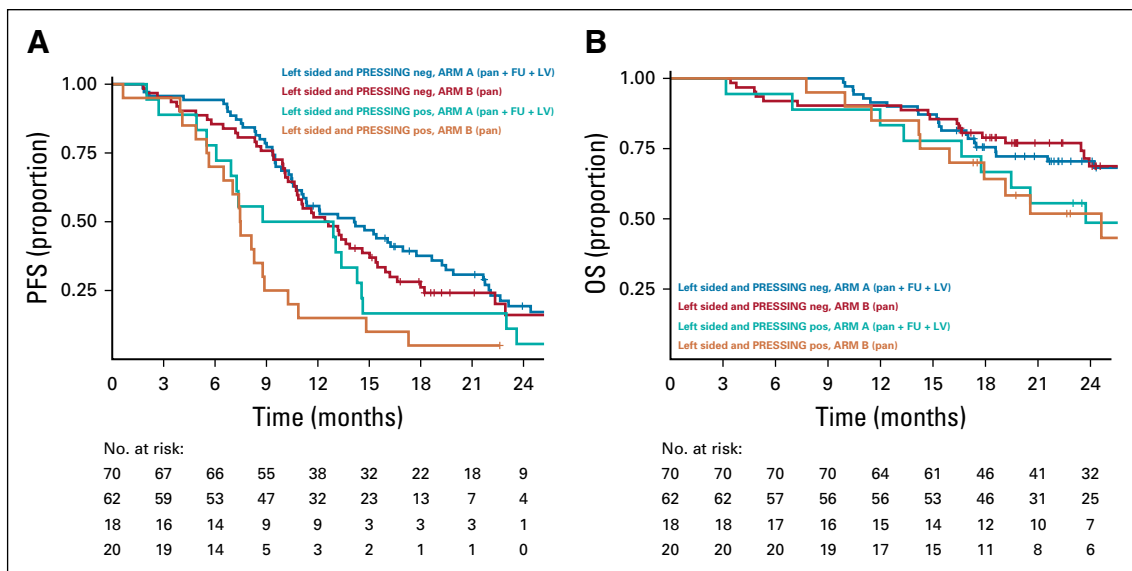


FIG A6. Predictive analysis according to combined tumor sidedness and primary resistance in *RAS* and *BRAF* wild-type metastatic colorectal cancer patients treated with anti-EGFR monoclonal antibodies (PRESSING) panel status in left-sided tumors. Kaplan-Meier curves for (A) progression-free survival (PFS) and (B) overall survival (OS) in the patient subgroup with left-sided/PRESSING-negative tumors stratified according to the two different maintenance treatment arms or the patient subgroup with left-sided/PRESSING-positive tumors stratified according to the two different maintenance treatment arms. FU + LV, fluorouracil plus leucovorin; neg, negative; pan, panitumumab; pos, positive.

TABLE A1. Incidence of the Singular Molecular Alterations Included in the PRESSING Panel

No.	Patient ID	Site of the Sample	PRESSING Panel Alterations (% of tumor cells)	RAS Adjusted MAF
01	001-001	M	WT	WT
02	001-002	M	WT	WT
03	001-003	P	<i>PIK3CA</i> exon 20 mutation: A1035V (32), MSI	WT
04	001-004	M	WT	WT
05	001-005	P	WT	WT
06	001-006	P	<i>MET</i> amplification (100)	WT
07	001-007	P	WT	WT
08	001-008	P	WT	WT
09	001-009	P	WT	WT
10	001-011	M	MSI	WT
11	001-012	M	WT	WT
12	001-013	M	WT	WT
13	001-014	M	WT	WT
14	001-016	M	<i>AKT1</i> exon 2 mutation: A50T (16)	WT
15	001-017	P	WT	WT
16	001-018	P	WT	WT
17	001-019	M	WT	WT
18	001-020	P	WT	WT
19	001-021	P	WT	WT
20	001-022	P	WT	WT
21	001-023	P	WT	WT
22	001-024	P	<i>RET</i> rearrangement (20) <i>KRAS</i> exon 2 mutation: G12D	1%
23	001-025	P	WT	WT
24	001-026	P	WT	WT
25	001-028	P	<i>KRAS</i> exon 2 mutation: G12V	10%
26	001-029	P	WT	WT
27	001-030	M	WT	WT
28	001-031	B	<i>KRAS</i> exon 2 mutation: G12D	7%
29	001-032	M	WT	WT
30	001-033	P	WT	WT
31	001-034	M	WT	WT
32	001-036	P	<i>PTEN</i> mutation: delP248 exon 7 (25); delT321 exon 8 (29) MSI	WT
33	001-037	P	WT	WT
34	001-038	P	WT	WT
35	001-039	P	WT	WT
36	001-040	P	<i>PTEN</i> exon 5 mutation: K128N (36)	WT
37	001-041	M	WT	WT
38	001-043	P	WT	WT
39	001-044	M	<i>HER2</i> amplification	WT
40	001-045	P	WT	WT
41	001-046	P	WT	WT

(continued on following page)

TABLE A1. Incidence of the Singular Molecular Alterations Included in the PRESSING Panel (continued)

No.	Patient ID	Site of the Sample	PRESSING Panel Alterations (% of tumor cells)	RAS Adjusted MAF
42	001-047	P	WT	WT
43	001-048	P	WT	WT
44	002-001	M	WT	WT
45	002-002	B	<i>NRAS</i> exon 3 mutation: Q61R	1%
			<i>KRAS</i> exon 2 mutation: G12V	4%
46	003-001	P	WT	WT
47	003-002	P	WT	WT
48	003-003	P	WT	WT
49	003-004	P	WT	WT
50	003-005	P	WT	WT
51	003-006	P	<i>HER2</i> amplification	WT
52	003-007	P	WT	WT
53	003-008	P	WT	WT
54	004-001	P	WT	WT
55	004-002	P	WT	WT
56	004-004	P	WT	WT
57	004-005	M	WT	WT
58	004-007	P	WT	WT
59	004-008	P	WT	WT
60	004-009	P	<i>NTRK</i> rearrangement (EML4-NTRK3)	WT
61	004-010	P	WT	WT
62	004-012	P	WT	WT
63	004-013	P	<i>PIK3CA</i> exon 20 mutation: H1047L (80)	WT
64	004-014	P	WT	WT
65	004-015	P	WT	WT
66	004-016	P	WT	WT
67	004-017	P	WT	WT
68	004-018	P	WT	WT
69	004-019	P	WT	WT
70	004-020	P	WT	WT
71	004-021	P	WT	WT
72	004-022	P	<i>PTEN</i> exon 7 mutation: C250V-fsTer 5 (39)	WT
73	004-024	P	WT	WT
74	004-025	P	<i>PIK3CA</i> exon 20 mutation –H1047L (38)	WT
75	004-026	P	WT	WT
76	004-027	P	WT	WT
77	004-028	P	WT	WT
78	004-029	P	WT	WT
79	004-030	P	WT	WT
80	004-031	P	WT	WT
81	004-033	P	WT	WT
82	005-001	P	WT	WT
83	005-002	P	<i>MET</i> amplification (53)	WT

(continued on following page)

TABLE A1. Incidence of the Singular Molecular Alterations Included in the PRESSING Panel (continued)

No.	Patient ID	Site of the Sample	PRESSING Panel Alterations (% of tumor cells)	RAS Adjusted MAF
84	005-004	P	WT	WT
85	005-006	P	<i>MET</i> amplification (83) <i>HER2</i> amplification	WT
86	005-009	P	WT	WT
87	006-001	P	WT	WT
88	006-003	P	WT	WT
89	006-004	P	<i>KRAS</i> exon 2 mutation: G12S	1%
90	007-001	P	WT	WT
91	007-002	P	WT	WT
92	007-005	M	WT	WT
93	007-006	P	WT	WT
94	007-007	P	WT	WT
95	007-008	P	MSI	WT
96	007-009	P	WT	WT
97	007-010	P	<i>PTEN</i> exon 5 mutation: R130G (15)	WT
98	007-011	P	WT	WT
99	007-012	P	WT	WT
100	007-013	P	WT	WT
101	007-014	P	<i>HER2</i> amplification	WT
102	007-015	P	<i>HER2</i> amplification	WT
103	008-001	P	WT	WT
104	008-002	P	WT	WT
105	008-003	P	WT	WT
106	008-004	M	<i>NRAS</i> exon 2 mutation: G13S	3%
107	008-005	M	WT	WT
108	008-006	P	WT	WT
109	008-007	P	<i>KRAS</i> exon 2 mutation: G12D	1%
110	008-008	P	<i>PIK3CA</i> exon 20 mutation: H1047R (5)	WT
111	008-009	P	<i>PIK3CA</i> exon 20 mutation: H1047R (70)	WT
112	008-010	P	WT	WT
113	008-011	P	WT	WT
114	008-012	B	WT	WT
115	008-013	M	WT	WT
116	008-014	P	WT	WT
117	008-015	P	WT	WT
118	008-016	P	<i>PIK3CA</i> exon 20 mutation: H1047L (30)	WT
119	009-001	M	<i>HER2</i> amplification	WT
120	009-002	P	WT	WT
121	010-001	M	WT	WT
122	010-002	P	WT	WT
123	010-003	P	WT	WT
124	010-004	M	WT	WT
125	010-005	P	<i>HER2</i> amplification	WT

(continued on following page)

TABLE A1. Incidence of the Singular Molecular Alterations Included in the PRESSING Panel (continued)

No.	Patient ID	Site of the Sample	PRESSING Panel Alterations (% of tumor cells)	RAS Adjusted MAF
126	011-001	P	WT	WT
127	011-002	P	<i>RET</i> rearrangement (50)	WT
128	011-003	M	WT	WT
129	011-004	P	WT	WT
130	011-005	P	WT	WT
131	011-006	P	WT	WT
132	011-007	P	<i>KRAS</i> exon 2 mutation: G12D	1%
133	012-001	P	WT	WT
134	012-002	P	<i>RET</i> rearrangement	WT
135	012-003	P	WT	WT
136	012-004	P	WT	WT
137	012-005	P	<i>HER2</i> amplification	WT
138	012-006	P	<i>NRAS</i> exon 2 mutation: G12C	3%
139	012-007	P	WT	WT
140	012-008	P	WT	WT
141	013-001	P	WT	WT
142	013-002	M	WT	WT
143	013-003	M	WT	WT
144	013-004	P	<i>PTEN</i> exon 5 mutation: H118L (30)	WT
145	013-005	P	WT	WT
146	013-006	P	WT	WT
147	013-007	P	WT	WT
148	015-002	P	WT	WT
149	015-003	P	<i>KRAS</i> exon 2 mutation: G12D	1%
150	015-004	M	WT	WT
151	015-005	M	WT	WT
152	015-006	P	<i>KRAS</i> exon 2 mutation: G13S	1%
153	015-007	M	WT	WT
154	015-008	P	<i>PIK3CA</i> exon 20 mutation: D1045V (9); H1047R (8)	WT
155	016-001	P	WT	WT
156	016-002	P	WT	WT
157	017-001	P	<i>PTEN</i> mutation: c.635-1G>C atypical <i>RAS</i> mutation L19F	NA
158	017-003	P	WT	WT
159	017-004	B	WT	WT
160	017-005	P	<i>HER2</i> amplification	WT
161	018-001	P	<i>PIK3CA</i> exon 20 mutation: H1047R (21)	WT
162	018-003	M	WT	WT
163	018-004	P	<i>PIK3CA</i> exon 20 mutation: Q546K (19)	WT
164	018-006	P	WT	WT
165	019-002	P	WT	WT
166	019-003	M	WT	WT
167	020-001	P	WT	WT
168	020-002	P	WT	WT

(continued on following page)

TABLE A1. Incidence of the Singular Molecular Alterations Included in the PRESSING Panel (continued)

No.	Patient ID	Site of the Sample	PRESSING Panel Alterations (% of tumor cells)	RAS Adjusted MAF
169	020-003	P	WT	WT
170	020-005	P	WT	WT
171	020-006	P	WT	WT
172	020-007	P	WT	WT
173	020-008	P	WT	WT
174	020-009	M	WT	WT
175	021-001	M	WT	WT
176	021-002	P	<i>ALK</i> rearrangement (50)	WT
177	021-003	B	WT	WT
178	023-001	P	WT	WT
179	024-001	M	<i>PIK3CA</i> exon 20 mutation: H1047R (32) <i>KRAS</i> exon 2 mutation: G12D	4%
180	024-002	P	WT	WT
181	024-003	P	<i>AKT1</i> exon 2 mutation: D46E (58)	WT
182	025-001	P	MSI	WT
183	025-002	P	<i>KRAS</i> exon 3 mutation: Q61H	2%
184	025-003	P	WT	WT
185	025-004	P	WT	WT
186	025-005	M	WT	WT
187	025-006	M	WT	WT
188	025-007	M	WT	WT
189	026-001	P	WT	WT
190	026-002	P	<i>KRAS</i> exon 2 mutation: G12V	3%
191	026-003	P	WT	WT
192	026-004	M	WT	WT
193	027-002	P	WT	WT
194	027-003	M	WT	WT
195	027-005	P	WT	WT
196	028-002	P	WT	WT
197	029-002	P	WT	WT
198	030-001	P	WT	WT
199	030-002	P	WT	WT

Abbreviations: B, both metastasis and primary tumor; M, metastasis; MAF, mutant allele fraction; MSI, microsatellite instability; NA, not assessable; P, primary tumor; PRESSING, primary resistance in *RAS* and *BRAF* wild-type metastatic colorectal cancer patients treated with anti-EGFR monoclonal antibodies; WT, wild-type.

TABLE A2. Individual Molecular Alterations, Primary Tumor Sidedness and Best RECIST Response to Induction Treatment in the Patients With PRESSING Panel-Positive or Right-Sided Primary Tumors

No.	Patient ID	PRESSING Panel Alteration (%)	Primary Tumor Sidedness	Best Response
01	001-003	<i>PIK3CA</i> exon 20 mutation: A1035V (32) MSI	Left	SD
02	001-004	WT	Right	SD
03	001-006	<i>MET</i> amplification (100)	Left	PR
04	001-009	WT	Right	SD
05	001-011	MSI	Left	SD
06	001-016	<i>AKT1</i> exon 2 mutation: A50T (16)	Right	PR
07	001-020	WT	Right	NE
08	001-024	<i>RET</i> rearrangement (20%) <i>KRAS</i> exon 2 mutation: G12D (1)	Left	PR
09	001-028	<i>KRAS</i> exon 2 mutation: G12V (10)	Left	SD
10	001-031	<i>KRAS</i> exon 2 mutation: G12D (7)	Left	PR
11	001-036	<i>PTEN</i> mutation: delP248 exon 7 (25) delT321 exon 8 (29%); MSI	Left	PD
12	001-037	WT	Right	CR
13	001-040	<i>PTEN</i> exon 5 mutation: K128N (36)	Right	SD
14	001-044	<i>HER2</i> amplification	Left	PR
15	002-002	<i>NRAS</i> exon 3 mutation: Q61R (1) <i>KRAS</i> exon 2 mutation: G12V (4)	Right	PD
16	003-006	<i>HER2</i> amplification	Left	PR
17	004-009	<i>NTRK</i> rearrangement (EML4-NTRK3)	Right	SD
18	004-013	<i>PIK3CA</i> exon 20 mutation: H1047L (80)	Left	SD
19	004-022	<i>PTEN</i> exon 7 mutation: C250V-fsTer 5 (39)	Left	CR
20	004-025	<i>PIK3CA</i> exon 20 mutation: H1047L (38)	Left	PR
21	004-027	WT	Right	PR
22	005-002	<i>MET</i> amplification (53)	Left	PR
23	005-006	<i>MET</i> amplification (83); <i>HER2</i> amplification	Left	PR
24	006-004	<i>KRAS</i> exon 2 mutation: G12S (1)	Left	NE
25	007-005	WT	Right	NE
26	007-008	MSI	Left	PR
27	007-010	<i>PTEN</i> exon 5 mutation: R130G (15)	Left	PR
28	007-011	WT	Right	PR
29	007-014	<i>HER2</i> amplification	Left	PR
30	007-015	<i>HER2</i> amplification	Left	PR
31	008-002	WT	Right	PD
32	008-004	<i>NRAS</i> exon 2 mutation: G13S (3)	Left	SD
33	008-006	WT	Right	NE
34	008-007	<i>KRAS</i> exon 2 mutation: G12D (1)	Left	PR
35	008-008	<i>PIK3CA</i> exon 20 mutation: H1047R (5)	Left	PR
36	008-009	<i>PIK3CA</i> exon 20 mutation: H1047R (70)	Left	PR
37	008-016	<i>PIK3CA</i> exon 20 mutation: H1047L (30)	Left	SD
38	009-001	<i>HER2</i> amplification	Left	SD
39	010-005	<i>HER2</i> amplification	Left	PR
40	011-002	<i>RET</i> rearrangement (50)	Left	SD

(continued on following page)

TABLE A2. Individual Molecular Alterations, Primary Tumor Sidedness and Best RECIST Response to Induction Treatment in the Patients With PRESSING Panel-Positive or Right-Sided Primary Tumors (continued)

No.	Patient ID	PRESSING Panel Alteration (%)	Primary Tumor Sidedness	Best Response
41	011-007	<i>KRAS</i> exon 2 mutation: G12D (1)	Left	PR
42	012-001	WT	Right	PR
43	012-002	<i>RET</i> rearrangement	Right	PD
44	012-005	<i>HER2</i> amplification	Left	PR
45	012-006	<i>NRAS</i> exon 2 mutation: G12C (3)	Left	SD
46	013-002	WT	Right	PR
47	013-004	<i>PTEN</i> exon 5 mutation: H118L (30)	Right	PR
48	0015-003	<i>KRAS</i> exon 2 mutation: G12D (1)	Left	CR
49	0015-004	WT	Right	NE
50	0015-006	<i>KRAS</i> exon 2 mutation: G13S (1)	Left	SD
51	0015-008	<i>PIK3CA</i> exon 20 mutation: D1045V (9) H1047R (8)	Left	CR
52	0017-001	<i>PTEN</i> mutation: c.635-1G>C atypical <i>RAS</i> mutation L19F	Left	PR
53	0017-005	<i>HER2</i> amplification	Right	PR
54	0018-001	<i>PIK3CA</i> exon 20 mutation: H1047R (21)	Left	PR
55	0018-004	<i>PIK3CA</i> exon 20 mutation: Q546K (19)	Left	PR
56	0019-003	WT	Right	PR
57	0020-002	WT	Right	PR
58	0020-003	WT	Right	PR
59	0020-007	WT	Right	PR
60	0021-002	<i>ALK</i> rearrangement (50)	Right	PR
61	0021-003	WT	Right	PR
62	0024-001	<i>PIK3CA</i> exon 20 mutation: H1047R (32) <i>KRAS</i> exon 2 mutation: G12D (4)	Left	PD
63	0024-003	<i>AKT1</i> exon 2 mutation: D46E (58)	Right	PR
64	0025-001	MSI	Right	NE
65	0025-002	<i>KRAS</i> exon 3 mutation: Q61H (2)	Left	NE
66	0025-007	WT	Right	PR
67	0026-002	<i>KRAS</i> exon 2 mutation: G12V (3)	Right	PD

Abbreviations: CR, complete response; MSI, microsatellite instability; NE, not evaluated (nonmeasurable disease or patients with clinical disease progression prior to the first tumor reassessment); PD, progressive disease; PR, partial response; PRESSING, primary resistance in *RAS* and *BRAF* wild-type metastatic colorectal cancer patients treated with anti-EGFR monoclonal antibodies; SD, stable disease; WT, wild type.

TABLE A3. Depth of Response to Induction Treatment With Panitumumab Plus FOLFOX-4 According to Sidedness, PRESSING Panel or Both

Variable	Depth of Response (%)		P*
	Median	IQR	
Overall population	-44.7	-59.8 to -19.8	—
Arm			.998
A (FU + LV + panitumumab)	-44.7	-59.2 to -21.2	
B (panitumumab)	-44.7	-60.2 to -16.8	
Sidedness			.114
Left	-44.8	-60.1 to -24.2	
Right	-36.0	-54.4 to 21.0	
PRESSING panel			.017
Negative	-46.9	-62.1 to -30.2	
Positive	-38.8	-51.3 to 7.5	
Left-sided subgroup			.062
PRESSING negative	-46.9	-62.4 to -31.1	
PRESSING positive	-39.6	-52.5 to -13.6	
Right-sided subgroup			.230
PRESSING negative	-48.2	-59.2 to 8.3	
PRESSING positive	-20.0	-46.7 to 21.0	

Abbreviations: FU + LV, fluorouracil plus leucovorin; IQR, interquartile range; PRESSING, primary resistance in *RAS* and *BRAF* wild-type metastatic colorectal cancer patients treated with anti-EGFR monoclonal antibodies.

*Wilcoxon test.

TABLE A4. Predictive Analyses According to PRESSING Panel Status in Left-Sided Subgroup

Analysis	Left-Sided Tumors and PRESSING Negative				Left-Sided Tumors and PRESSING Positive				Interaction Test P
	Arm A	Arm B	HR	P	Arm A	Arm B	HR	P	
Median PFS, months (95% CI)	14.1 (11.1 to 18.7)	12.5 (10.8 to 15.4)	1.20 (0.82 to 1.77)	.350	10.8 (6.9 to 14.6)	7.5 (6.5 to 10.3)	1.53 (0.77 to 3.05)	.224	.281
2-year OS rate %, (95% CI)	70.5 (60.3 to 82.3)	68.7 (56.9 to 83.0)	0.77 (0.43 to 1.37)	.367	48.6 (29.8 to 79.3)	51.9 (33.2 to 81.1)	0.96 (0.42 to 2.23)	.929	.682

Abbreviations: HR, hazard ratio; OS, overall survival; PFS, progression-free survival; PRESSING, primary resistance in RAS and BRAF wild-type metastatic colorectal cancer patients treated with anti-EGFR monoclonal antibodies.