

Thermal conductivity reduction in rough silicon nanomembranes

G.Pennelli,* E.Dimaggio, and M.Macucci

Dipartimento di Ingegneria della Informazione, Università di Pisa, Via Girolamo Caruso 16, I-56122 Pisa, Italy

Nanostructured silicon is a promising material for thermoelectric conversion, because the thermal conductivity in silicon nanostructures can be strongly reduced with respect to that of bulk materials. We present thermal conductivity measurements, performed with the 3ω technique, of suspended monocrystalline silicon thin films (nanomembranes or nanoribbons) with smooth and rough surfaces. We find evidence for a significant effect of surface roughness on phonon propagation: the measured thermal conductivity for the rough structures is well below that predicted by theoretical models which take into account diffusive scattering on the nanostructure walls. Conversely, the electrical conductivity appears to be substantially unaffected by surface roughness: the measured resistance of smooth and rough nanostructures are comparable, if we take into account the geometrical factors. Nanomembranes are more easily integrable in large area devices with respect to nanowires and are mechanically stronger and able to handle much larger electrical currents, thus enabling the fabrication of thermoelectric devices that can supply higher power levels with respect to existing solutions.

I. INTRODUCTION

In the last years, significant research effort has been devoted to the investigation of thermal transport in nanostructures, such as silicon nanowires[1–3]. It has been found that their thermal conductivity k_t is often rather small, because phonon propagation is suppressed by scattering on the nanowire surfaces. As demonstrated by several experimental investigations[4–7], and confirmed by theoretical considerations[8–10], rough surfaces do suppress phonon conduction: values of thermal conductivity down by two orders of magnitude with respect to that of bulk silicon can in principle be achieved. The key point is that, in order to achieve satisfactory operation of thermoelectric devices, the electrical conductivity must instead be minimally affected by surface roughness. Suppression of thermal conductivity while keeping a good electrical conductivity opens up interesting opportunities in the field of energy harvesting, because a high thermoelectric conversion efficiency could be achieved with a material, such as silicon, abundant on the Earth’s crust and biocompatible. Since single nanostructures can handle only a limited amount of current, a thermoelectric generator (TG) useful for practical applications must consist in a large collection of interconnected nanostructures[11–13]. Silicon nanomembranes and nanoribbons, with one dimension t_h (thickness) much smaller than the other (width W) represent an interesting alternative to nanowires, since a very large number of them can be packed in parallel[14] with the larger side W perpendicular to the surface. As the nanomembrane approach is promising for practical TGs, our study is aimed at understanding how far surface roughness can go in reducing thermal conductivity of nanomembranes[15]. We developed a process for the fab-

rication of suspended silicon nanomembranes (nanoribbons), together with contacts for the in-plane electrical characterization and a heater for 3ω in-plane thermal transport characterization. We compared the electrical and thermal transport of smooth and rough nanoribbons. We found that electrical transport is only slightly affected by the roughness in our nanomembranes, meanwhile the thermal conductivity is strongly reduced with respect to that of bulk silicon. *Our results confirm the strong effect of rough surfaces in limiting the phonon propagation, which has already been demonstrated in silicon nanowires[4, 16]. We used a technique for thermal conductivity measurements which is reliable and less prone to parasitic effects than DC techniques. The thermal conductivity has been related to the roughness of the surface, which has been quantified by means of the auto-correlation function of AFM images. Thermal conductivity measurements are compared with simple theoretical models, based on the assumption of fully diffusive phonon scattering on the nanomembrane walls. A strong reduction of the thermal conductivity, with respect to that predicted by these diffusive models, is demonstrated. In the case of rough nanowires, specific theoretical models to describe phonon scattering on rough surfaces have been developed[17, 18]. These models explain the strong thermal conductivity reduction in nanowires, and should be adapted to nanomembranes to confirm our experimental results.*

II. DEVICE FABRICATION

The left panel of Fig. 1 shows a SEM image of a typical device, made up of an array of suspended thin silicon membranes, arranged in a double comb configuration with a central silicon body. On this silicon body, a metal (gold) strip is the heater for the 3ω thermal conductivity measurement. The resistance of this metal strip can be measured by means of leads arranged in a four contact configuration. Another couple of contacts allow the

* g.pennelli@iet.unipi.it, tel. +39 050 2217 699, fax. +39 050 2217522

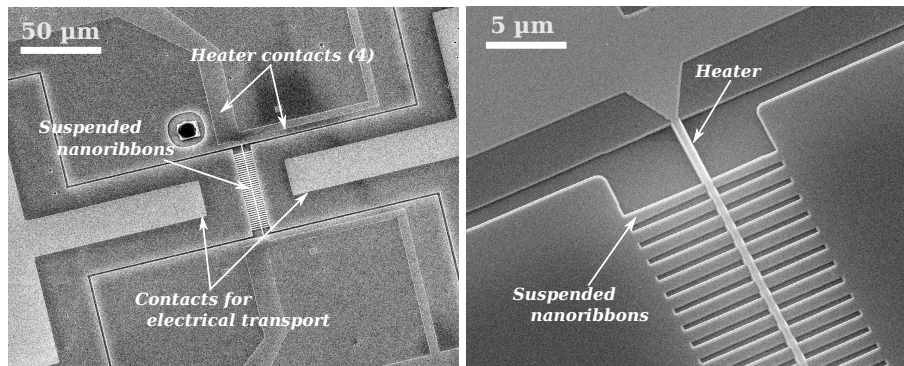


FIG. 1. SEM images of the suspended nanomembranes, used for the thermal and the electrical transport investigations.

measurement of the electrical conductivity of the silicon nanomembranes. The device has been fabricated on the top silicon layer of a Silicon On Insulator substrate. The top silicon layer is 260 nm thick, the buried oxide layer is 1 μm thick and the total substrate thickness is 0.5 mm. The process is similar to that already used for the fabrication of silicon nanowire devices[19–21], and is based on electron beam lithography[22] and silicon anisotropic etching. An eventual thinning of the top silicon layer is performed by dry oxidation and BHF etching. The thicknesses have been measured from Atomic Force Microscopy (AFM) images, taken during the process steps. The process steps can be summarized as follows (see Fig. 2).

1) A 40 nm thick SiO_2 layer is grown on the top silicon layer (Fig. 2a).

2) Electron beam lithography is used for the definition of trenches in the top SiO_2 layer, with the deposition of PMMA resist, e-beam exposure, development, and SiO_2 etching by means of Buffered HF (BHF). In this step, the comb geometry is defined in the top SiO_2 layer. After BHF etching, the thickness of the top SiO_2 layer has been measured, with a result around 40 nm for all the fabricated samples.

3) KOH etching has then been used for transferring this pattern to the top silicon layer (Fig. 2b). After this step, AFM imaging has been performed for the measurement of the thickness of the top silicon plus the top SiO_2 layer. Therefore, the top silicon layer thickness has been obtained by subtracting the SiO_2 thickness, measured before the KOH etching, as KOH has practically no effect on SiO_2 . A final nanomembrane thickness of 240 nm has been measured, if the process is performed on the substrate with a top silicon layer 260 nm thick. Different thicknesses (see the measurement results) have been achieved by thinning the substrate through oxidation/BHF etch before the first lithographic step.

4) Then the top silicon dioxide layer has been removed by means of BHF etching. This etch step allows the deposition of the metal tracks in direct contact with silicon, without any insulating layer in between.

5) An e-beam lithography step has then been performed

on a PMMA double layer, and then a metal layer, consisting of 10 nm of Chromium for adhesion and of 80 nm of Gold, has been deposited by means of thermal evaporation (Fig. 2c). Metal lift off has been performed in hot acetone. This lithographic step has been carefully aligned with the comb structure underneath, so that the metal track has been positioned exactly on the silicon body in the middle of the device.

6) The nanomembranes (both the comb and the central body) have been suspended by underetching the buried oxide by means of BHF (Fig. 2d). The final device is shown in Fig. 3.

The sketch, drawn on the SEM photo, illustrates the purpose of each contact. The contacts at the sides of the comb are used for the measurement of the electrical conductivity of the nanoribbons. The four contacts are used for the precise measurement of the resistance of the metal strip fabricated in the middle of the comb. The nanomembrane roughening is performed after the definition of the metal track, but before the suspension of the nanomembranes by means of SiO_2 underetching: nanomembranes are very delicate, and any attempt at roughening suspended nanostructures has resulted in a very low yield in terms of final number of working devices.

A rough surface has been achieved by soaking the sample in a solution with hydrofluoric acid and silver nitrate; this technique has been already used by Lim[4] and coworkers for roughening silicon nanowires. The SEM image of Fig. 4 shows silver nanoparticles, deposited on the surface of a nanomembrane by soaking the sample in a solution AgNO_3/HF 0.01/5.1 mol for 60 s. Silver is reduced, withdrawing an electron from silicon (i.e. injecting a hole), so that it precipitates, aggregating in nanoparticles on the silicon surface. *Silicon is oxidized and then it is etched by the hydrofluoric acid.* Therefore, a local etching of silicon occurs under the silver nanoparticles. This mechanism is not fully understood yet, even if it is the basis of the Metal Assisted Chemical Etching (MaCE) technique, largely used for the fabrication of silicon nanowires perpendicular to a silicon substrate[23]. We use this MaCE technique to produce shallow holes that are randomly

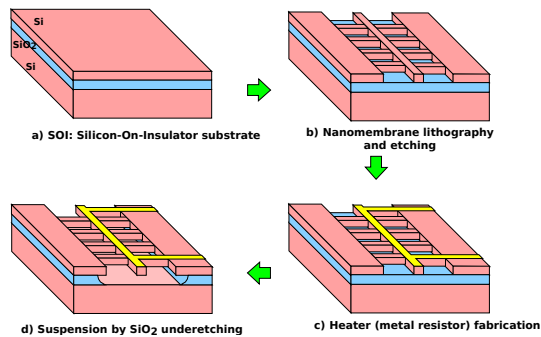


FIG. 2. Sketches showing the process flow for the fabrication of suspended nanomembranes.

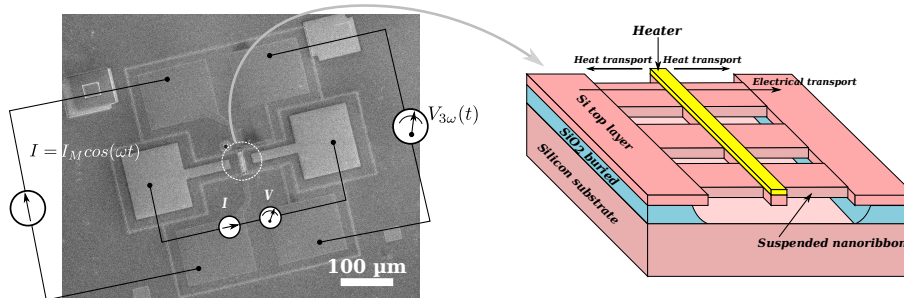


FIG. 3. Left panel: SEM image of the device. The sketches drawn on the image illustrate the measurement procedure. The two contacts at the sides of the comb are used for the measurement of the electrical resistance of the nanoribbons. The other four contacts are instead used for the precise measurement of the resistance of the metal strip fabricated at the middle of the comb. Right panel: sketch of the device, showing the suspended nanomembranes and the central part with the fabricated metal strip (heater). Thermal transport and electrical transport can be investigated in the plane of the silicon nanomembranes.

distributed on the silicon surface. After the etch step, the silver nanoparticles have been removed by soaking the sample in HNO_3 : H_2O 1:5 for 2 m. The result is a very rough surface, as visible in the SEM image in the bottom panel of Fig. 4. The $I - V$ characteristic of the silicon nanoribbons has been measured before and after the roughening process, through the contacts placed at the sides of the comb, as shown in Fig. 3. In this way, the relationship between the electrical conductivity before and after roughening has been established. An important quantity that must be determined for the evaluation both of the electrical and of the thermal conductivity is the final thickness of the silicon nanomembranes. The roughening process leaves a chaotic pattern on the silicon surface, but it also removes a small amount of silicon, thus reducing the thickness of the nanoribbons. As HF etches the SiO_2 buried layer, a direct measurement of the final thickness of the nanomembranes, after the roughening process, is not possible. Therefore, the thickness has been measured using the gold metal tracks as a reference, because gold is substantially unaffected by the etching processes. The thickness of the metal tracks, with respect to the silicon, has been measured by means of AFM imaging before and after the roughening process. The difference between the two measurements corresponds to the amount of silicon that has been removed. Due to the roughness of the silicon surface, an

average thickness has been obtained by averaging over areas of several square microns.

The thermal conductivity is evaluated with the 3ω technique, exploiting the metal structure fabricated in the middle of the double comb both as a heater and as a temperature sensor. A sinusoidal electrical current is injected into the metal track through two of the four available contacts. The heat generated as a result of the Joule effect can be dissipated only through the nanomembranes in the direction of their plane, because they are suspended. The voltage is measured through the other two available contacts (four-probe configuration), and the amplitude of the third harmonic is extracted by means of a lock-in amplifier (see the sketch on the SEM image of Fig. 3). As it has been demonstrated in several applications, the amplitude of the third harmonic is related to the thermal dissipation[24–26], which in our case is due to the thermal conductivity in the film plane. For the proper application of the 3ω technique it is essential to choose the correct model for data reduction. Although an analytical model has been developed for 2D structures[26] (thin membranes), in our case we have fitted the data by means of an approach based on FEM (Finite Element Method) simulations that we have developed [27], using the thermal conductivity as a fitting parameter. The simulation takes into account the thermoelectric transport in the metal and in the silicon nanostructures, considering

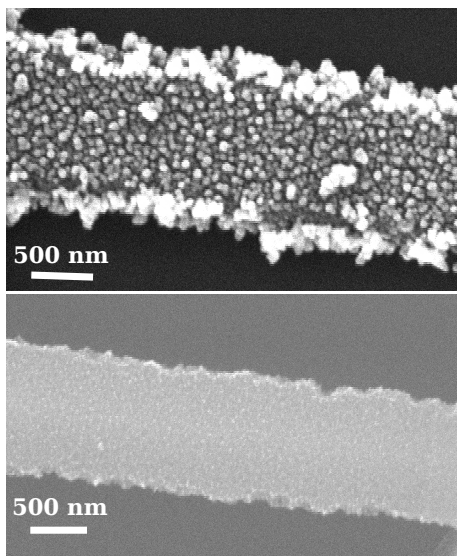


FIG. 4. Top image: SEM image of a silicon nanoribbon, covered by Silver nanoparticles after the MACE step. Bottom image: SEM image of a silicon nanoribbon, once the Silver nanoparticles have been removed by means of HNO_3 etching; the surface appears to be very rough.

the measured electrical conductivities.

III. THERMAL AND ELECTRICAL CONDUCTIVITIES

In Fig. 5 the results of the measured thermal conductivity of smooth and rough silicon nanomembranes are shown. *On the same plot, the thermal conductivity predicted by a model based on diffusive scattering of phonon on the nanoribbon walls is also reported for comparison purposes. The resulting thermal conductivity corresponds to the so-called Casimir limit. Measurements clearly demonstrate that the thermal conductivity is strongly reduced as a result of the surface roughness, well below the Casimir limit.* The theoretical evaluation of the thermal conductivity k_t has been performed following the Callaway-Holland formalism[28, 29], in the vision developed by Asen-Palmer[30] and, in particular, from the expression by Morelli *et al.*[31]:

$$k_t = \frac{1}{3} \frac{1}{2\pi^2} \frac{k^4 T^3}{\hbar^3 v_s} \int_0^{\frac{T_\theta}{T}} \tau(x) \frac{x^4 e^x}{(e^x - 1)^2} dx \quad (1)$$

where T_θ is the Debye temperature, \hbar is the reduced Planck constant, T is the absolute temperature, k is the Boltzmann constant, $x = \hbar\omega/kT$, and $\tau(x)$ is the relaxation time. Both the contribution of k_t^L due to the longitudinal mode and that of k_t^T due to the transverse phonon modes have been evaluated taking into account the proper parameters. The two contributions have then

been combined to derive the total thermal conductivity: $k_t = k_t^L + k_t^T$.

In the evaluation of the relaxation time $\tau(\omega)$, we have taken into account the contribution of different scattering processes, combining them by means of Matienssen's rule. The relaxation times $\tau_N(\omega)$, relative to the phonon-phonon normal scattering, $\tau_U(\omega)$, relative to the phonon umklapp scattering and $\tau_I(\omega)$, relative to the isotope scattering, have been evaluated using the parameters reported by Morelli *et al.* [31] for the longitudinal and the transverse phonon modes. In order to include the contribution from boundary scattering, we followed an approach similar to the one proposed by Sondheimer[32] for the electrical conduction in thin metal films, based on the solution of the Boltzmann transport equation. For the present work, we have used the simpler solution developed by Turney *et al.*[33] for phonon transport in thin silicon layers with a width much greater than the thickness t_h . Following this model, at first a preliminary relaxation time $\tau'(\omega)$ has been computed with Matthiessen's rule, including all the scattering phenomena, but the phonon boundary scattering. Then, the total relaxation time has been evaluated as (see the paper by Turney *et al.*[33], *with the probability of specular boundary scattering $p = 0$, which means that all boundary scatterings are thermalised*):

$$\tau(\omega) = \tau'(\omega) \left(1 - \frac{1}{\delta}\right) (1 - e^{-\delta}) \quad (2)$$

where $\delta = t_h/v_s\tau'(\omega)$ (v_s is v_s^L for longitudinal and v_s^T for transverse phonon). *A more complex model taking into account the anisotropy of silicon has been developed[34].* In Fig. 5 the continuous line represents the thus computed thermal conductivity k_t as a function of the thickness t_h , for a silicon nanoribbon 1 μm wide, which is a width comparable to that of our devices.

The experimental value reported at the top right of Fig. 5 has been obtained on a 240 nm thick smooth nanoribbon, and it appears to be in good agreement with the theoretical prediction. Indeed at the end of the fabrication process the nanoribbons are very smooth if the roughening step has not been performed. The oxidation step used for the definition of the mask for silicon etching preserves the smoothness of the surface, while reducing the thickness of the nanoribbons, whose final value is 240 nm (from AFM measurements).

The thermal conductivity undergoes a dramatic change if the roughening process (described in the previous Section) is performed. The AFM image in the left panel of Figure 6 shows the surface after the roughening process. *No-contact AFM images (PSIA-XE100 AFM) have been taken of several portions of surfaces, using fresh silicon tips with a 10 nm radius. The Gwyddion software for AFM image reduction has been used. Since our XE100 AFM gives quite planar images of the surface, a simple "plane level" step has been performed. Then, the two-dimensional autocorrelation function has been computed, and the main characteristics of the roughness have been*

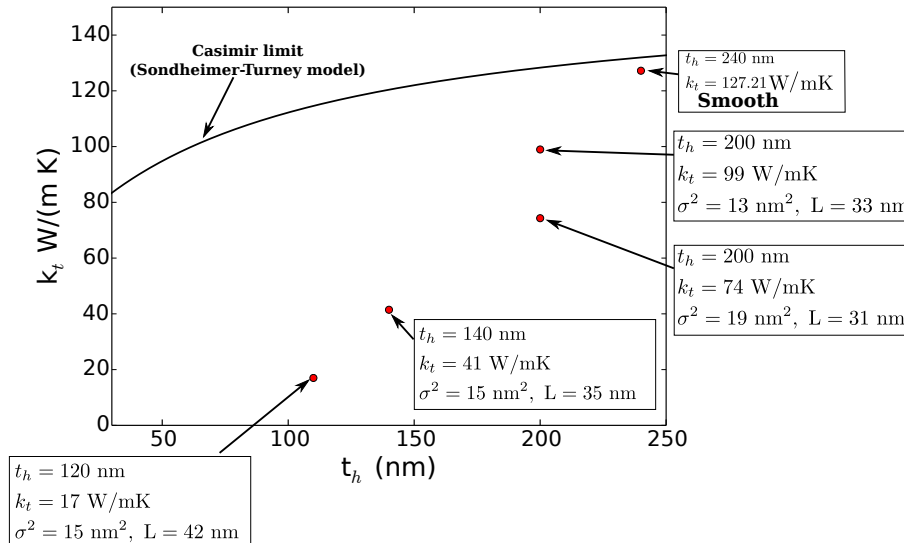


FIG. 5. Comparison between a theoretical model (see text) for thermal conductivity in nanomembranes and nanowires and our experimental results.

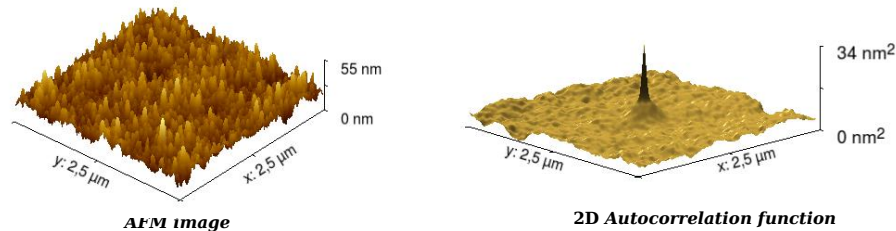


FIG. 6. Left panel: AFM image of the surface after the roughening process. Right panel: two-dimensional autocorrelation function of the surface roughness.

derived. In particular, the autocorrelation function has been fitted with a gaussian: $g(\bar{r}) = \sigma^2 e^{-r^2/L^2}$, where σ is the standard deviation with respect to the average value of the surface and L is the autocorrelation parameter. For the sample shown in Fig. 6 we achieved $\sigma^2 = 17 \text{ nm}^2$ and $L = 42 \text{ nm}$. Part of the silicon is etched during the roughening process, therefore at the end the final thickness of the nanomembranes is reduced: the final thickness is measured by means of AFM imaging, as explained in the previous section.

For a final thickness of 200 nm we report the values of the thermal conductivity for two different values of the roughness variance: while for $\sigma^2 = 13 \text{ nm}^2$ we get 99 W/(m K), for $\sigma^2 = 19 \text{ nm}^2$ k_t is reduced down to 74 W/(m K). It must be noted that the roughening step must be performed before the underetch of the buried oxide, which is needed to achieve the suspension of the nanomembranes. Therefore, we cannot measure the thermal conductivity before and after the roughening process, and the values reported in Fig. 5 have been obtained on different samples.

As the thickness is decreased, we observe, for similar values of the roughness, a sharp reduction of the ther-

mal conductivity, down to 17 W/(m K) for $t_h = 120 \text{ nm}$. Our data indicates a strong effect of the roughness on the thermal conductivity of the nanomembranes, which can drop well below the Casimir limit. This is analogous to what has been measured[1–7] on rough silicon nanowires. Several authors have investigated from the theoretical point of view the effect of the surface roughness on the thermal conductivity[8, 35]. In particular, for nanowires it has been demonstrated that the reduction of phonon thermal conductivity below the Casimir limit can be explained, at least in part, as a result of coherent scattering on highly disordered (rough) surfaces, leading to destructive interference of phonons[17, 36, 37]. Such an effect appears to be strongly related to the standard deviation and, in particular, to the correlation length of the roughness. Some alternative models, based on classical phonon Monte Carlo simulations[18], demonstrate instead that multiple correlated scattering alone on the nanowire walls, without the inclusion of phase coherence, can lead to the measured reduction of the thermal conductivity in nanowires.

We think that the strong reduction of thermal conductivity that we have observed in nanomembranes can be

ascribed to the same phenomena. Adaptation of these complex models of phonon scattering to thermal transport in silicon nanomembranes is beyond the scope of our current work.

We did not investigate nanomembranes with a thickness below 120 nm because of mechanical stability problems. It would instead be possible to study thinner membranes with a different process, defining them in the direction orthogonal to the wafer by means of high-aspect-ratio anisotropic etching.

The electrical resistance has been measured through the contacts fabricated on the sides of the suspended nanoribbons (see Fig. 1). The top silicon layer has a uniform doping of $5 \times 10^{18} \text{ cm}^{-3}$. We report, as a typical example, the resistance of the sample with smooth nanoribbons 240 nm thick: the resistance was $R = 110.35 \text{ } \Omega$. For the rough sample, with nanoribbons 120 nm thick, we measured an electrical resistance of $R = 246.49 \text{ } \Omega$: this is compatible with the final thickness of the sample (120 nm), and with the slight reduction of the nanoribbon width as a consequence of silicon etching associated with roughening. Therefore, the final measured resistance is consistent with the variation of the geometrical parameters (thickness and width), and this means that the electrical conductivity is practically unchanged. Both resistance values, taking into account the geometrical factors, give an electrical conductivity of $0.006 \text{ } \Omega^{-1} \text{ cm}^{-1}$. This value is compatible with the nanoribbon doping.

This is a key point for future applications of the monocrystalline nanoribbons for thermal to electrical energy conversion: the thermal conductivity is strongly reduced by the rough surface, while the electrical conductivity is practically unaffected.

IV. CONCLUSIONS

We have presented an application of the particular version of the 3ω technique that we have developed for the evaluation of the thermal conductivity of rough suspended silicon nanomembranes, for which a direct application of the commonly used analytical approximations would lead to excessive approximations. While in the absence of significant surface roughness the results of our measurements are in agreement with theoretical predictions, the introduction of roughness appears to strongly suppress thermal conductivity, in analogy with what has been previously observed in the literature for silicon nanowires, while substantially leaving the electrical conductivity unaffected. If confirmed, this would make rough silicon nanoribbons quite interesting candidates for silicon-based thermoelectric generators, because of the relatively high figure of merit ZT and the current carrying capability, which is significantly larger than that of silicon nanowires.

-
- [1] D. Li, Y. Wu, P. Kim, L. Shi, P. Yang, and A. Majumdar, *Appl. Phys. Lett.* **83**, 2934 (2003).
 - [2] A. I. Hochbaum, R. Chen, R. D. Delgado, W. Liang, C. E. Garnett, M. Najarian, A. Majumdar, and P. Yang, *Nature Letters* **451**, 163 (2008).
 - [3] G. Pennelli, A. Nannini, and M. Macucci, *J. Appl. Phys.* **115**, 084507 (2014).
 - [4] J. Lim, K. Hippalgaonkar, S. Andrews, C., A. Majumdar, and P. Yang, *Nano Letters* **12**, 2475 (2012).
 - [5] Y.-H. Park, J. Kim, H. Kim, I. Kim, K. Y. Lee, D. Seo, H. J. Choi, and W. Kim, *Applied Physics A* **104**, 7 (2011).
 - [6] J. Feser, J. Sadhu, B. Azeredo, H. Hsu, J. Ma, J. Kim, M. Seong, N. Fang, X. Li, P. Ferreira, S. Sinha, and D. Cahill, *J. Appl. Phys.* **112**, 114306 (2012).
 - [7] H.-Y. Kim, H. and Park, I. Kim, J. Kim, J.-H. Choi, and W. Kim, *Appl. Phys. A* **104**, 23 (2011).
 - [8] P. Martin, Z. Aksamija, E. Pop, and U. Ravaioli, *Phys. Rev. Lett.* **102**, 125503 (2009).
 - [9] L. Liu and X. Chen, *Journal of Applied Physics* **107**, 033501 (2010).
 - [10] J. Carrete, L. Gallego, and L. Varela, *Phys. Rev. B* **84**, 075403 (2011).
 - [11] G. Pennelli, M. Totaro, M. Piotta, and P. Bruschi, *Nano Lett.* **13**, 2592 (2013).
 - [12] M. Totaro, P. Bruschi, and G. Pennelli, *Microelectron. Eng.* **97**, 157 (2012).
 - [13] D. Davila, A. Tarancon, C. Calaza, M. Salleras, M. Fernandez-Regulez, A. SanPaulo, and L. Fonseca, *Nano Energy* **1**, 812 (2012).
 - [14] G. Pennelli and M. Macucci, *Semicond. Sci. Technol.* **31**, 054001 (2016).
 - [15] A. Marconnet, M. Asheghi, and K. Goodson, *Journal of Heat Transfer* **134**, 061601 (2013).
 - [16] W. Chern, K. Hsu, I. Chun, B. de Azeredo, N. Ahmed, K.-H. Kim, J. Zuo, N. Fang, P. Ferreira, and X. li, *Nano Letters* **10**, 1582 (2010).
 - [17] J. Sadhu and S. Sinha, *Phys. Rev. B* **84**, 115450 (2011).
 - [18] L. Maurer, Z. Aksamija, E. Ramayya, A. Davoody, and I. Knezevic, *Appl. Phys. Lett.* **106**, 133108 (2015).
 - [19] S. Ciucci, F. D'Angelo, A. Diligenti, B. Pellegrini, G. Pennelli, and M. Piotta, *Microelectron. Eng.* **78-79**, 338 (2005).
 - [20] G. Pennelli, M. piotta, and G. Barillaro, *Microelectron. Eng.* **83**, 1710 (2006).
 - [21] G. Pennelli and B. Pellegrini, *J. Appl. Phys.* **101**, 104502 (2007).
 - [22] G. Pennelli, F. D'Angelo, M. Piotta, G. Barillaro, and B. Pellegrini, *Review of Scientific Instruments* **74**, 3579 (2003).
 - [23] E. Dimaggio and G. Pennelli, *Nano Letters* **16**, 4348 (2016).
 - [24] D. Cahill, *Rew. of Scient. Instrum.* **61**, 802 (1990).
 - [25] L. Lu, W. Yi, and D. Zhang, *Rew. of Scient. Instrum.* **72**, 2996 (2001).
 - [26] K. Jain, A. and Goodson, *Journal of Heat Transfer* **130**, 102404 (2008).

- [27] G. Pennelli, E. Dimaggio, and M. Macucci, ArXiv e-prints (2017), arXiv:1708.03142 [cond-mat.mes-hall].
- [28] J. Callaway, Physical Review **113**, 1046 (1958).
- [29] M.G. Holland, Physical Review **132**, 2461 (1963).
- [30] M. Asen-Palmer, K. Bartkowski, E. Gmelin, M. Cardona, A. Zhernov, A. Inyushkin, A. Taldenkov, V. Ozhogin, and E. Itoh, K.M. Haller, Physical Review B **56**, 9431 (1997).
- [31] D. Morelli, J. Heremans, and G. Slack, Physical Review B **66**, 195304 (2002).
- [32] E. Sondheimer, Adv. Phys. **1**, 1 (1952).
- [33] J. Turney, A. McGaughey, and C. Amon, Journal of Applied Physics **107**, 024317 (2010).
- [34] Z. Alsamija and I. Knezevic, Phys. Rev. B **82**, 045319 (2010).
- [35] D. Santamore and M. Cross, Phys. Rev. B **65**, 184306 (2001).
- [36] P. Murphy and J. Moore, Phys. Rev. B **76**, 155313 (2007).
- [37] R. Chen, H. A. I., P. Murphy, J. Moore, P. Yang, and A. Majumdar, Phys. Rev. Lett. **101**, 105501 (2008).