

1 **Dermal perifollicular changes in Poodles are not always associated**  
2 **with mineralization.**

3  
4 **V Miragliotta\*, S Buonamici\*, A Coli\*, F Abramo\*.**

5  
6 *\*Department of Veterinary Sciences, University of Pisa, Viale delle Piagge*  
7 *2, I-56124, Pisa, Italy.*

8  
9  
10 Corresponding author

11 Vincenzo Miragliotta, DVM, PhD, Associate professor – University of Pisa

12 Dept. Veterinary Sciences - Viale delle Piagge 2, 56124 – Pisa, Italy

13 Tel. +39-050-2216865 - Fax +39-050-2210655

14 e-mail address: [vincenzo.miragliotta@unipi.it](mailto:vincenzo.miragliotta@unipi.it)

15  
16  
17 Source of funding: This work was accomplished without specific funds.

18  
19 Conflict of interest: none declared

20  
21 VM and SB contributed equally to this work.

22  
23 Short running title: Hair follicle changes in poodles

24

25 Abstract

26 **Background** - It is commonly accepted that canine dystrophic  
27 mineralization of the hair follicle glassy membrane can be seen in  
28 hyperadrenocorticism and as a senile change of poodles. Pathology  
29 textbooks define this change as deposition of calcium salts in form of  
30 basophilic, amorphous, granular material along collagen fibrils. The aim was  
31 to evaluate whether the incidence of the lesion is specific of poodles and if  
32 it is always associated with calcium deposition.

33 **Animals** - One-hundred-forty-seven dogs divided into three groups: 1) 91  
34 normal poodles; 2) 40 dogs of other breeds; 3) 16 dogs with  
35 clinical/histopathological diagnosis of hyperadrenocorticism.

36 **Methods** - Retrospective study; Haematoxylin and Eosin and Von Kossa  
37 staining.

38 **Results** - Our findings demonstrate that perifollicular changes of the hair  
39 follicle glassy membrane of poodles are not always associated with  
40 mineralization.

41 **Conclusions and clinical importance** - A specific staining is needed to  
42 differentiate true mineralization when examining poodles skin.

43

44

45

46 Introduction

47

48 Dermal perifollicular mineralization was first reported as a normal finding  
49 of miniature poodles in 1984.<sup>1</sup> As reported, the lesion consists of deeply  
50 basophilic deposits in dermal collagen immediately surrounding occasional  
51 hair follicles. More specifically, the deposits are located in the glassy  
52 membrane which surrounds the external root sheath. The mentioned work  
53 reported that the mineralized material detected in 22 out of 29 (76%)  
54 female toy poodles, stained black with the von Kossa staining procedure  
55 for calcium and bright blue with the Prussian blue stain for iron. X-ray  
56 microanalysis of the mineral deposits indicated that they were composed  
57 of calcium, iron and phosphorus. Authors reported that in the examined  
58 tissues mineralization prevailed in telogen follicles and in only one  
59 instance it was recorded in the anagen phase. The mentioned data arose  
60 from a larger study whose aim was to determine safety and efficacy of  
61 mibolerone (a non progestational androgenic steroid), in 227 dogs of  
62 seven different breeds that lasted 9.6 years.<sup>2</sup> Since dermal perifollicular  
63 mineralization was recorded only in poodles, the conclusion was that this  
64 is a normal finding in elderly animals belonging to this breed.<sup>1</sup> Since then,  
65 dermal perifollicular mineralization was never investigated and the  
66 reference texts for veterinary dermatology report this lesion (as  
67 dystrophic mineralization) as a breed specific finding related to ageing.<sup>3,4</sup>  
68 Dermal perifollicular mineralization is also a common finding in dogs with  
69 naturally occurring or iatrogenic Cushing syndrome.<sup>4</sup>  
70 To evaluate the incidence of this lesion we performed a retrospective  
71 study in normal poodles, poodles with clinical/histopathological diagnosis  
72 of hyperadrenocorticism and normal dogs of different breeds.

73

74

75 Materials and methods

76

77 One-hundred-forty-seven (147) dogs were included in the study; animals  
78 were divided into three groups: 1) 91 normal poodles (regardless of their  
79 size); 2) 40 dogs of other breeds; 3) 16 poodles with  
80 clinical/histopathological diagnosis of hyperadrenocorticism. Skin samples  
81 were obtained from paraffin embedded blocks of the department  
82 histopathology service. Ethical committee authorization was not necessary  
83 since archival samples were used.

84 Inclusion criteria were: Group 1 (poodles): presence of a skin biopsy  
85 presenting an area of normal skin with at least 5 follicular units; Group 2  
86 (other breeds): as for group 1; Group 3: poodles, clinical/histopathological  
87 diagnosis of hyperadrenocorticism.

88 Two serial sections were obtained from each skin block. The first one was  
89 stained with Haematoxylin and Eosin (H&E) while the second was stained  
90 for calcium deposits with the Von Kossa (VK) staining procedure, using a  
91 commercial kit in order to assure standardization and reproducibility of  
92 data (cat. 04-170801, Bio-Optica Milano SpA, Milan, Italy). Samples were  
93 thus evaluated for the presence/absence of dermal perifollicular  
94 mineralization in the glassy membrane of the hair follicle surrounding the  
95 external root sheath, and classified as either positive or negative,  
96 respectively. Results obtained by two independent investigators were  
97 compared and conflicts were resolved by re-examination of the slide.

98 For statistical purposes, animals from group 1 were arbitrarily divided in  
99 two sub-groups to evaluate the incidence of dermal perifollicular  
100 mineralization with aging: A) animals younger than 6 years (n=17); B)  
101 animals older than 6 years (n=74). Animals belonging to group 2 and 3  
102 aged between 6 and 14 years old and were thus comparable to sub-group  
103 1B. Data obtained within the two staining methods were compared using  
104 the Fisher's exact test.

105

106 Results

107

108 H&E stained samples showed the presence of perifollicular changes  
109 ranging from a slight thickening of basophilic appearance (figure 1a) to  
110 evident basophilic granular deposits (figure 1b) to mineralized spicules  
111 (figure 1c) within or surrounding the hair follicle glassy membrane; its  
112 presence was different among experimental groups. In group 1A, 59% of  
113 animals (10/17) were classified as positive while the remaining (7/17)  
114 were devoid of changes. Elderly animals, belonging to group 1B showed a  
115 significant increase of the presence of the lesion (88%, 65/74) with only  
116 9/74 animals (12%) being negative. Group 2 (animals of other breeds) did  
117 not show a significant presence of the lesion since only 7/40 animals  
118 (17%) were recorded as positive. Group 3 showed a significant presence  
119 of deposits (75% of positives, 12/16). Results are summarized in figure  
120 1d.

121

122 The VK staining showed the same distribution pattern observed with H&E,  
123 appearing as brown/black deposits of calcium (Figure 2a, b, c). Group 1A  
124 showed 24% of positive cases (4/17) while 1B showed 30% of positives  
125 (22/74). Group 3 showed instead 94% of animals recorded as positives  
126 (15/16). VK results are summarized in figure 2d.

127 H&E staining showed statistical differences between group 1A and 1B  
128 (young vs elderly poodles); group 2 (animals of other breeds) was  
129 statistically different from group 1B and not from 1A. The VK stain showed  
130 that groups 1A and 1B are not different for calcium deposits. An high  
131 statistical difference was observed between groups 1B and 3, this latter  
132 composed of dogs with confirmed diagnosis of hyperadrenocorticism.

133

134

135

136 Discussion

137

138 H&E staining showed group 2 to be different from group 1b but not from  
139 group 1a: from these findings it is thus possible to conclude that the  
140 described lesion observed in poodles is related to the breed and increases  
141 with age. Results emanating from the VK staining showed that groups 1A  
142 and 1B are not different for calcium deposits thus leading to the  
143 conclusion that the lesion commonly regarded as "mineralization" is not  
144 always confirmed by a specific staining.

145 The sensibility of the VK staining in this setting is confirmed by the high  
146 statistical difference observed between groups 1B (young poodles) and 3  
147 (poodles with hyperadrenocorticism).

148 Our results demonstrate that dermal perifollicular changes observed  
149 histologically in biopsy samples from poodles are not always associated  
150 with mineralization. The basophilic material may thus account for a  
151 different alteration of for a precocious lesion where calcium deposits are  
152 not yet visible by VK stain.

153 A similar lesion affecting vibrissae was considered as an early biomarker  
154 of disease in *ABCC6*<sup>-/-</sup> mice,<sup>5</sup> this mentioned gene being involved in  
155 aberrant ectopic mineralization.<sup>5-7</sup> *ABCC6* appears among a number of  
156 genes associated with human photoreceptor degeneration, a disease that  
157 may have a counterpart in poodles, namely progressive rod and cone  
158 dystrophy.<sup>8,9</sup> Further studies are thus needed both to characterize the  
159 lesion and to evaluate whether a genetic background is present.

160

161

162

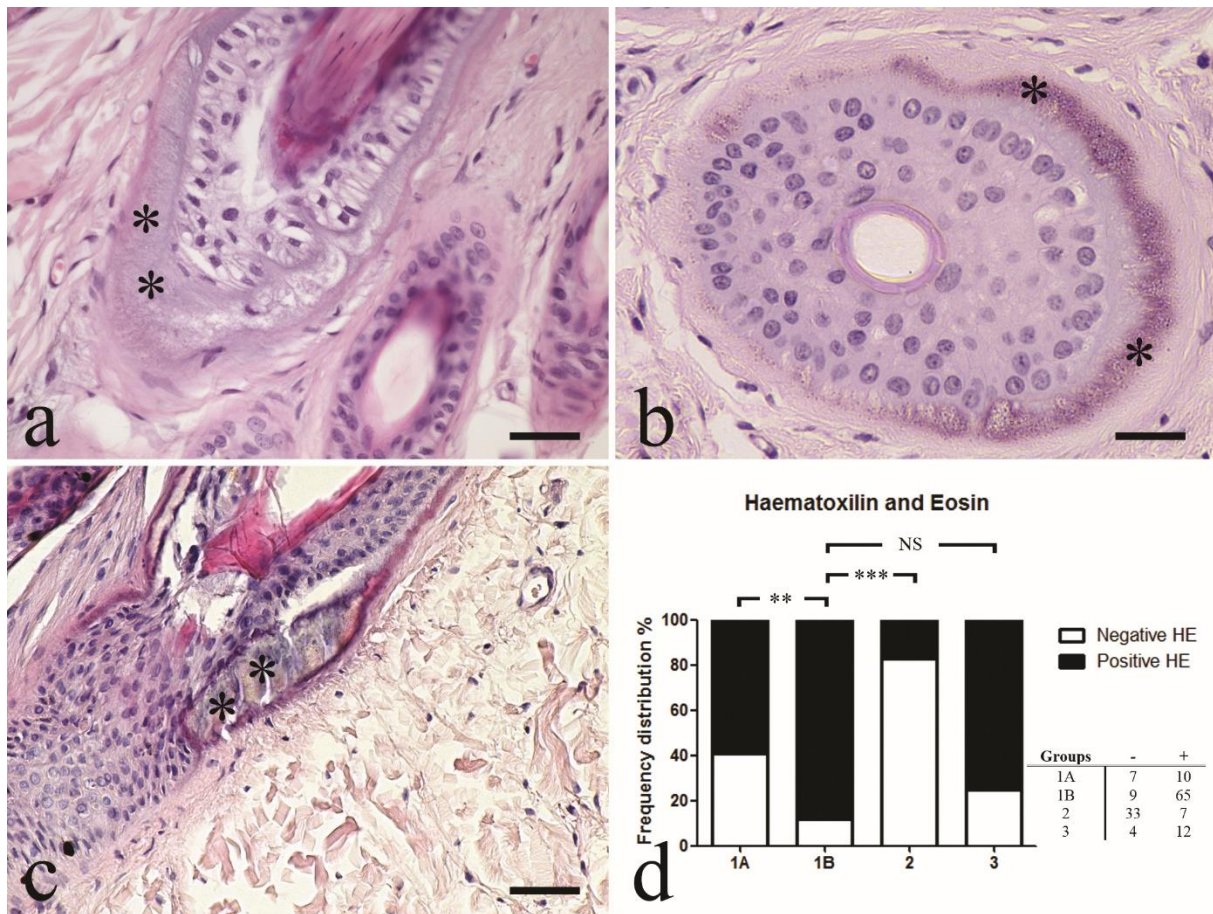
163 References

164  
165  
166  
167  
168  
169  
170  
171  
172  
173  
174  
175  
176  
177  
178  
179  
180  
181  
182  
183  
184  
185  
  
186  
187  
188

1. Seaman WJ, Chang SH. Dermal Perifollicular Mineralization of Toy Poodle Bitches. *Veterinary Pathology* 1984;21:122-123.
2. Seaman WJ. Canine ovarian fibroma associated with prolonged exposure to mibolerone. *Toxicol Pathol* 1985;13:177-180.
3. Maxie MG. Jubb, Kennedy & Palmer's pathology of domestic animals. Volume 1, 2015.
4. Miller WH, Griffin CE, Campbell KL, et al. *Muller and Kirk's Small Animal Dermatology7: Muller and Kirk's Small Animal Dermatology*: Elsevier/Mosby, 2013.
5. Klement JF, Matsuzaki Y, Jiang QJ, et al. Targeted ablation of the abcc6 gene results in ectopic mineralization of connective tissues. *Mol Cell Biol* 2005;25:8299-8310.
6. Jiang Q, Li Q, Uitto J. Aberrant mineralization of connective tissues in a mouse model of pseudoxanthoma elasticum: systemic and local regulatory factors. *J Invest Dermatol* 2007;127:1392-1402.
7. Jiang Q, Uitto J. Restricting dietary magnesium accelerates ectopic connective tissue mineralization in a mouse model of pseudoxanthoma elasticum (Abcc6(-/-) ). *Exp Dermatol* 2012;21:694-699.
8. Pacione LR, Szego MJ, Ikeda S, et al. Progress toward understanding the genetic and biochemical mechanisms of inherited photoreceptor degenerations. *Annu Rev Neurosci* 2003;26:657-700.
9. Aguirre GD, Acland GM. Variation in retinal degeneration phenotype inherited at the prcd locus. *Exp Eye Res* 1988;46:663-687.

189 Legends for figures

190



191

192 Figure 1: photomicrographs of Haematoxylin and Eosin stained samples to

193 show different appearance of the perifollicular lesion, indicated with

194 asterisks: a) basophilic thickening of the follicular glassy membrane; b)

195 basophilic granular deposits; c) amorphous material in form of spiculae; d)

196 frequency distribution of the lesion: \*\* =  $p < 0.001$ , \*\*\* =  $p < 0.0001$ , NS =

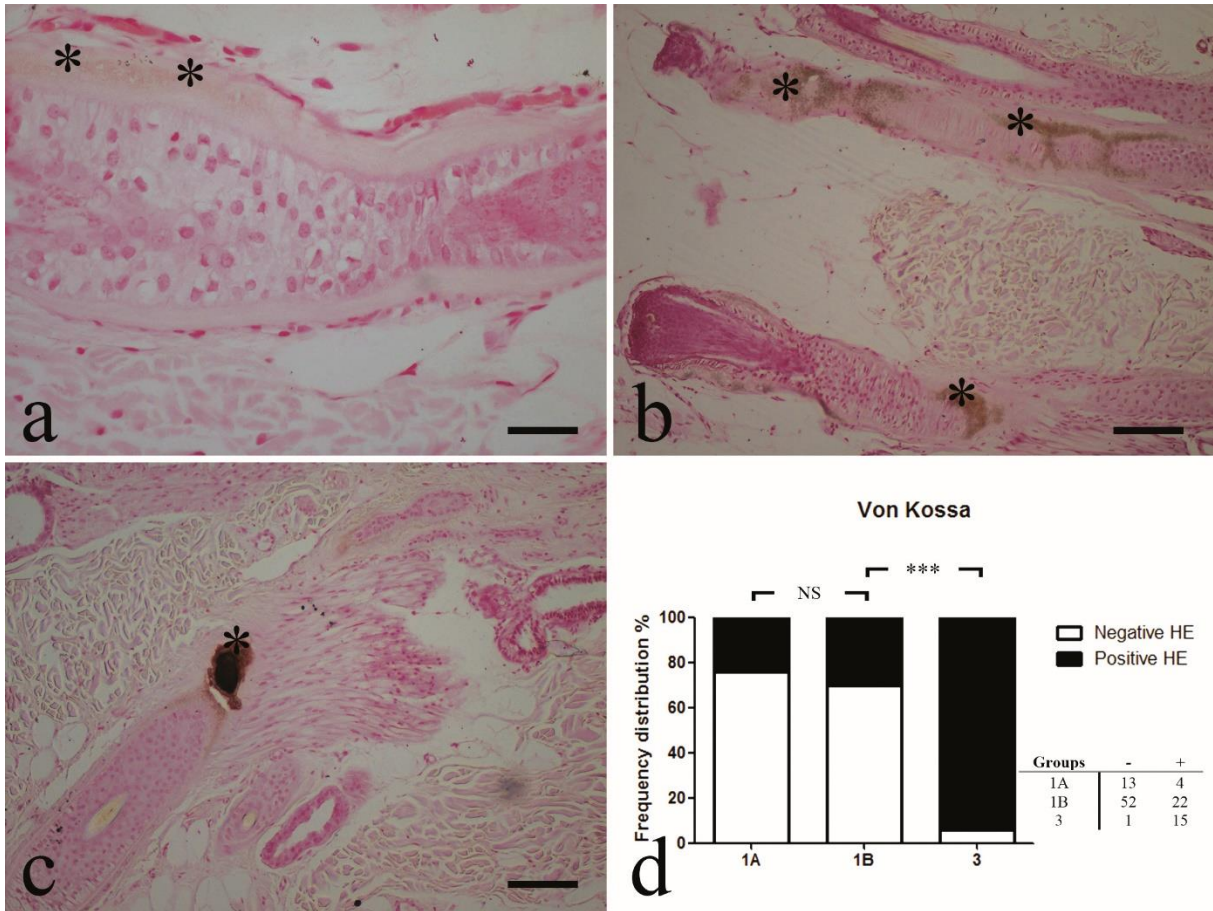
197 non-significant. Scale bars are equal to 25  $\mu\text{m}$  in a and b and to 50  $\mu\text{m}$  in

198 c.

199

200





201  
 202 Figure 2: photomicrographs of Von Kossa stained samples to show  
 203 different appearance of the calcium deposits, indicated with asterisks: a)  
 204 minimal calcium deposition; b) moderate calcium deposition; c) evident  
 205 mineralization of a lesion appearing as a spicula; d) frequency distribution  
 206 of calcium deposits: \*\*\*=  $p < 0.0001$ , NS= non-significant. Scale bars are  
 207 equal to 25  $\mu\text{m}$  in a and 100  $\mu\text{m}$  in b and c.  
 208