

## Article

# Environmental and Oceanographic Conditions at the Continental Margin of the Central Basin, Northwestern Ross Sea (Antarctica) Since the Last Glacial Maximum

Fiorenza Torricella <sup>1,\*</sup>, Romana Melis <sup>2</sup>, Elisa Malinverno <sup>3</sup>, Giorgio Fontolan <sup>2</sup>, Mauro Bussi <sup>2</sup>, Lucilla Capotondi <sup>4</sup>, Paola Del Carlo <sup>5</sup>, Alessio Di Roberto <sup>5</sup>, Andrea Geniram <sup>2</sup>, Gerhard Kuhn <sup>6</sup>, Boo-Keun Khim <sup>7</sup>, Caterina Morigi <sup>1</sup>, Bianca Scateni <sup>1,5</sup> and Ester Colizza <sup>2,\*</sup>

- <sup>1</sup> Dipartimento di Scienze della Terra, Università di Pisa, Via Santa Maria 53, 56126 Pisa, Italy; caterina.morigi@unipi.it (C.M.); bianca.scateni@ingv.it (B.S.)
- <sup>2</sup> Dipartimento di Matematica e Geoscienze, Università di Trieste, Via E. Weiss 2, 34128 Trieste, Italy; melis@units.it (R.M.); fontolan@units.it (G.F.); bussi@units.it (M.B.); andrea.geniram@phd.units.it (A.G.)
- <sup>3</sup> Dipartimento di Scienze dell'Ambiente e della Terra, Università di Milano-Bicocca, Piazza della Scienza 4, 20126 Milano, Italy; elisa.malinverno@unimib.it
- <sup>4</sup> Istituto di Scienze Marine-Consiglio Nazionale delle Ricerche ISMAR-CNR, Via P. Gobetti 101, 40129 Bologna, Italy; lucilla.capotondi@bo.ismar.cnr.it
- <sup>5</sup> Istituto Nazionale di Geofisica e Vulcanologia, Sezione di Pisa, Via C. Battisti 53, 56125 Pisa, Italy; paola.delcarlo@ingv.it (P.D.C.); alessio.diroberto@ingv.it (A.D.R.)
- <sup>6</sup> Alfred Wegener Institute Helmholtz Centre for Polar and Marine Research, Am Alten Hafen 26, 27568 Bremerhaven, Germany; gerhard.kuhn@awi.de
- <sup>7</sup> Department of Oceanography, Pusan National University, Busan 46241, Korea; bkkhim@pusan.ac.kr
- \* Correspondence: fiorenza.torricella@phd.unipi.it (F.T.); colizzae@units.it (E.C.)



**Citation:** Torricella, F.; Melis, R.; Malinverno, E.; Fontolan, G.; Bussi, M.; Capotondi, L.; Del Carlo, P.; Di Roberto, A.; Geniram, A.; Kuhn, G.; et al. Environmental and Oceanographic Conditions at the Continental Margin of the Central Basin, Northwestern Ross Sea (Antarctica) Since the Last Glacial Maximum. *Geosciences* **2021**, *11*, 155. <https://doi.org/10.3390/geosciences11040155>

**Academic Editors:**  
Jesus Martinez-Frias and Angelos G. Maravelis

Received: 26 February 2021  
Accepted: 26 March 2021  
Published: 31 March 2021

**Publisher's Note:** MDPI stays neutral with regard to jurisdictional claims in published maps and institutional affiliations.



**Copyright:** © 2021 by the authors. Licensee MDPI, Basel, Switzerland. This article is an open access article distributed under the terms and conditions of the Creative Commons Attribution (CC BY) license (<https://creativecommons.org/licenses/by/4.0/>).

**Abstract:** The continental margin is a key area for studying the sedimentary processes related to the advance and retreat of the Ross Ice Shelf (Antarctica); nevertheless, much remains to be investigated. The aim of this study is to increase the knowledge of the last glacial/deglacial dynamics in the Central Basin slope–basin system using a multidisciplinary approach, including integrated sedimentological, micropaleontological and tephrochronological information. The analyses carried out on three box cores highlighted sedimentary sequences characterised by tree stratigraphic units. Collected sediments represent a time interval from 24 ka Before Present (BP) to the present time. Grain size clustering and data on the sortable silt component, together with diatom, silicoflagellate and foraminifera assemblages indicate the influence of the ice shelf calving zone (Unit 1, 24–17 ka BP), progressive receding due to Circumpolar Deep Water inflow (Unit 2, 17–10.2 ka BP) and (Unit 3, 10.2 ka BP–present) the establishment of seasonal sea ice with a strengthening of bottom currents. The dominant and persistent process is a sedimentation controlled by contour currents, which tend to modulate intensity in time and space. A primary volcanic ash layer dated back at around 22 ka BP is correlated with the explosive activity of Mount Rittmann.

**Keywords:** diatoms; micropaleontology; sedimentology; cryptotephra; LGM to Holocene; Central Basin; Western Ross Sea; Antarctica

## 1. Introduction

The high-latitude continental margins are key areas where the sedimentary processes are influenced by the advance and retreat of the ice shelf and by different bottom water current activity on the continental slope between the glacial and interglacial periods [1–3].

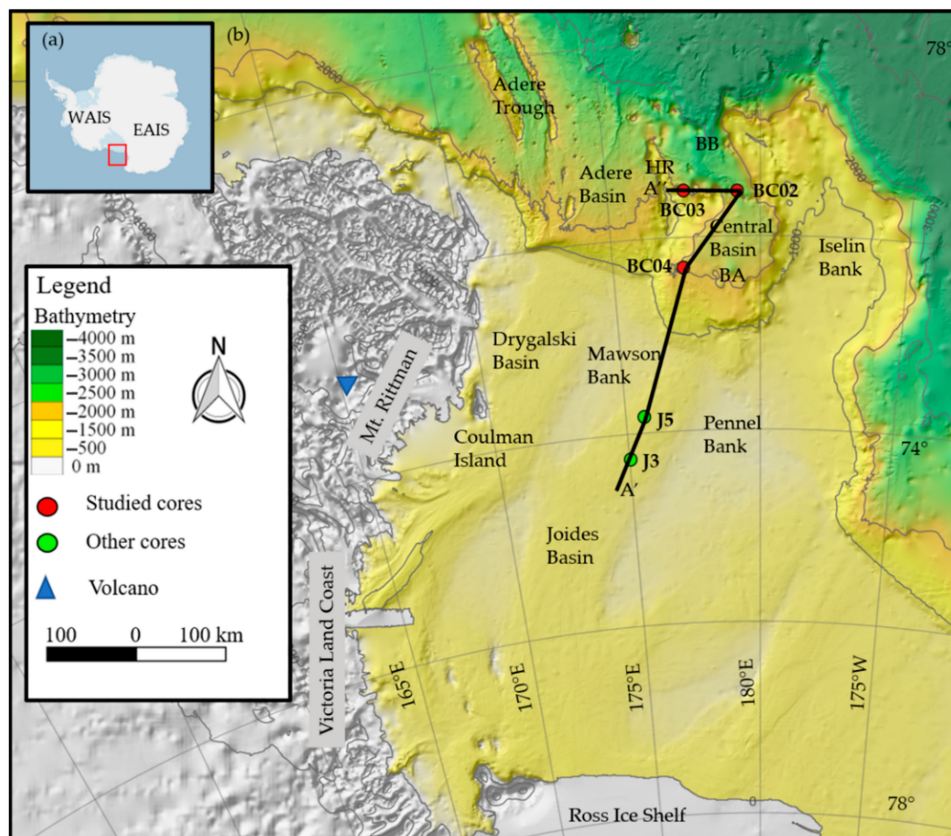
The Ross Sea continental margins record the variation of the Antarctic Ice Sheet (AIS) due to the presence of the largest ice shelf, the Ross Ice Shelf (RIS), which promotes the production of dense shelf water which is the precursor for Antarctic Bottom Waters (AABW) [4]. The RIS dynamics that occurred during the Pleistocene and Holocene have

been extensively studied in the continental shelf (e.g., [5–9]), whereas the marginal areas including the continental slope and rise area, have been less investigated (e.g., [10–16]).

AIS and ice shelves are markedly sensitive to climate change and the study of their past response to climate/environment variations is useful for modelling and prediction of future sea level change [17–21].

The Central Basin forms a deep semi-closed tectonic depression located at the mouth of the JOIDES Basin, along the northwestern margin of the Ross Sea continental shelf. This basin is characterised by different morphological sectors as reported by [3]: the JOIDES mouth and relative continental slope, the intra-slope basin, the ponded basin, located in the south-eastern upper slope, the Central Basin floor and the topographic highs (Iselin Bank to the east, Hallett Ridge to the west, Bank A to the south and Bank B to the north). The Scott Canyon connects the Central Basin to the deep ocean (Figure 1). The semi-closed configuration of the Central Basin favoured the development of contourites associated with the westward-flowing along-slope bottom current [3].

From the oceanographic point of view, the relatively warm Circumpolar Deep Water (CDW) enters into the Central Basin flowing as the modified CDW on the continental shelf where it mixes with the dense shelf water, the High Salinity Shelf Water (HSSW). A branch of the HSSW descends into continental slope through the JOIDES Basin forming the Antarctic Bottom Water (AABW) [22,23].



**Figure 1.** Bathymetric map of the Ross Sea (modified from [24]). WAIS = West Antarctic Ice Sheet, EAIS = Eastern Antarctic Ice Sheet. The red rectangle indicates the studied area. HR = Hallett Ridge, BA = Bank A, BB = Bank B. Red dots indicate the studied box cores: BC02 = KI13–BC02; BC03 = KI13–BC03; BC04 = KI13–BC04. Green dots indicate cores J5 (ANTA99–cJ5) and J3 (ANTA99–cJ3) studied by [25]. The black line is the axis for the schematic model presented in Section 4.3.

This study aims to increase the understanding of the last glacial and deglacial dynamics in the Central Basin slope–basin system, which is an ideal region for studying the oceanographic variations in relation to the RIS dynamics. We used three box cores located in different morphological settings and at different water depths, to highlight the

variations in time and space of the environmental changes recorded by the studied sedimentary sequence, using an integrated analysis of sedimentological, micropaleontological and tephrochronological.

We investigated how the different micropaleontological indicators, together with other proxies, respond to the main environmental/climatic variations. This study allows us to provide the spatial and temporal evolution of the most important environmental and oceanographic phases.

## 2. Materials and Methods

The three-box cores, KI13–BC02, KI13–BC03, and KI13–BC04 (hereafter BC02, BC03 and BC04) were collected during the KOPRI ANA03B cruise onboard the IBRV ARAON in February 2013 in the framework of the scientific cooperation between Korea and Italy (K-PORT and PNRA/ROSSLOPE Projects) (Table 1, Figure 1 [24,25]). The box cores were split, described and x-rayed at the Department of Mathematics and Geosciences (Trieste). Sediment colours were based on the Munsell colour chart.

**Table 1.** List of core locations, core length and water depth.

Core ID	Latitude S	Longitude E	Water Depth (m)	Length (cm)
KI13-BC2	71°21.00	179°30.33	2246	37
KI13-BC3	71°52.47	177°48.08	1800	37
KI13-BC4	72°32.87	177°33.43	1788	45

### 2.1. Chronology

The chronology of the studied box-cores is based on the thirteen Accelerator Mass Spectrometry (AMS) radiocarbon dates performed at the Poznań Radiocarbon Laboratory, Adam Mickiewicz University (Poland) and with the MICADAS [26] at the Alfred-Wegener-Institut Helmholtz-Zentrum für Polar-und Meeresforschung (AWI, Germany). Eleven AMS radiocarbon analyses were carried out using acid insoluble organic matter (AIOM) and two were carried out on *N. pachyderma* tests (Table 2). Uncorrected and calibrated  $^{14}\text{C}$  data are summarised in Table 2.

**Table 2.** Accelerator Mass Spectrometry (AMS)  $^{14}\text{C}$  ages with calibrated calendar ages  $\pm 2\sigma$  (year) and applied local contamination offset and reservoir age correction (see text) of the studied core. The calendar ages were calibrated using CALIB REV 7.1 software [27] with a Marine 13 calibration curve [28]. A constant reservoir correction of  $1144 \pm 121$  years with a  $\Delta R$  of  $791 \pm 121$  years [29] was applied.

Box Core Label	Sample Depth (cm)	Carbon Source <sup>a</sup>	Laboratory Code	Conventional $^{14}\text{C}$ Age (year BP)	Error (year)	LCO <sup>b</sup>	LCO Corr. Age (year BP)	Median Probability Cal Age (year BP)	Lower Cal Range (year BP)	Upper Cal Range (year BP)
KI-13 BC02	0–1	AIOM	OS-107476	4140				0		
KI-13 BC02	8–9	AIOM	4809.1.2	10,813	150	3040	7773	7479	7112	7867
KI-13 BC02	15–16	AIOM	Poz-121677	16,330	100	3040	13,290	14,006	13,585	14,642
KI-13 BC02	18–19	AIOM	Poz-121678	17,010	110	3040	13,970	15,209	14,476	15,776
KI-13 BC02	26–27	AIOM	Poz-121679	17,930	120	3040	14,890	16,546	16,058	17,063
KI-13 BC03	0–1	AIOM	Poz-69634	5050				0		
KI-13 BC03	27–28	<i>N. pachy</i>	4814.1.1	14,421	122	-	-	15,878	15,315	16,332
KI-13 BC03	33–34	<i>N. pachy</i>	4815.1.1	15,596	136	-	-	17,537	17,044	17,979
KI-13 BC04	0–1	AIOM	OS-107477	4500				0		
KI-13 BC04	10–11	AIOM	4807.1.1	16,167	217	3400	12,767	13,451		
KI-13 BC04	16–17	AIOM	Poz-121674	17,100	110	3400	13,700	14,692	14,106	15,239
KI-13 BC04	24–25	AIOM	Poz-121675	20,530	150	3400	17,130	19,233	18,796	19,683
KI-13 BC04	36–37	AIOM	4806.1.1	22,810	419	3400	19,410	22,005		

<sup>a</sup> AIOM: acid-insoluble organic matter; *N. pachy*: monospecific planktic tests. <sup>b</sup> LCO: local contamination offset; see text for explanation.



Taking into consideration the different carbonate and organic carbon matrices, we decided to directly calibrate the carbonate dates and to treat AIOM dates prior to the calibration in  $^{14}\text{C}$  ages. Radiocarbon chronologies using the AIOM fraction from bulk sediments are often compromised by contamination from the reworked old organic carbon derived from glacial erosion and/or from the reworking of unconsolidated sediments (see [30,31] for the discussion). This is evidenced by AIOM dates of Antarctic surface sediments that extend over several thousand years [32,33]. The AIOM dates of the surface levels (0–1 cm) of BC02 and BC04 have been used to correct the respective ages in depth for each box-core. These surficial dates embed the regional marine reservoir effect (MRE) and the local dead carbon contamination offset (LCO), assuming that both MRE and LCO did not change during the Holocene ([29,30] for details). We also assumed that the age difference between the AIOM  $^{14}\text{C}$  age of the core-top of two box cores and the Marine Reservoir Effect (MRE) represents the local contamination with older organic matter in this area, and hereafter it is referred to as LCO (see discussion in [34]). Before calibrating the  $^{14}\text{C}$  dates, the LCO obtained for this area was subtracted from the AIOM  $^{14}\text{C}$  down box-cores ages (LCO corrected ages), assuming that both MRE and LCO did not change over the Holocene ([29,30] for details). We used a MRE of  $1.1 \pm 0.12$  ka  $^{14}\text{C}$  suggested by [29] for the Ross Sea carbonate samples as the box-core BC03 was only dated in two subsurface levels using carbonates (Table 2), the surface level is assumed to be of modern age, similar to the other two box cores.

The LCO corrected AMS  $^{14}\text{C}$  dates performed on AIOM and those performed on *N. pachyderma* tests were converted into calibrated ages by means of the CALIB REV 7.1 calibration program [27], at 95% confidence ranges. The MARINE 13 calibration curve [28], assuming regional marine offset ( $\Delta R$ )  $0.79 \pm 0.12$  ka from the global MRE [29], was used. The new calibration curve (MARINE 20, [35]) was not used since it is not suitable for the calibration of Antarctic sediments, as suggested by [36].

## 2.2. Grain Size Analyses

Grain sizes analyses were performed on 1-cm thick subsamples at 1–2-cm intervals. The fraction  $>1$  mm was separated by sieving to remove the larger grains. Grains were counted as belonging to the same sediment aliquot, and were thus used as an indicator of the coarse detrital component as a whole. The grain size characterisation of the  $<1$  mm fraction was carried out using a Malvern Mastersizer Hydro2000S diffraction laser unit. Sand, silt, and clay fractions were determined using the grain-size classification proposed by [37]. Statistical parameters (mean size  $Mz$ , sorting  $\sigma_i$ , skewness  $Sk$ , kurtosis  $Kg$ ) were determined according to [38]. We did not remove the biogenic silica fraction due to the abundance of siliciclastic particles highlighted during smear slide analyses as suggested by [39]. Moreover, the presence of non-biogenic amorphous silica resulting from volcanic glass or as an output from glacial abrasion should be considered part of the sediment archive. The parameters sortable silt mean size (mean  $SS$ ) and percentage ( $SS\%$ ) were calculated from the grain size dataset according to [40]. Half- $\Phi$  grain size data were used for clustering through the non-hierarchical K-means method. The number of iterations was stopped at  $n = 6$ , e.g., when achieving a number of grain-size end-members (=clusters) representative of the regular fining/coarsening of the grain-size spectra or the uni- or bi-pluri-modal feature of the distribution. Elaboration was carried out using the Past3 open-source program (version 3.18, [41]).

## 2.3. Cryptotephra Analyses

A cryptotephra, i.e., a layer of volcanic ash not visible at the naked eye, was identified during the micropaleontological investigation at 38–39 cm of sediment depth in BC04. The bulk sediment sample was treated using  $\text{H}_2\text{O}_2$  with 40% concentration to dissolve organic matter, washed with deionized water in an ultrasonic bath and dried at  $60^\circ\text{C}$ . The treated sample was then impregnated in epoxy resin, polished and prepared for textural and geochemical (major and minor elements) analyses. The textures and composition of

glass particles in the BC04 38–39 sample were studied using a scanning electron microscope (SEM), Zeiss EVO MA coupled with an Oxford–Aztec Energy EDS Analysis System. Standards of volcanic glass (VG2) were analysed for comparison. Cryptotephra analyses were performed at the Institution of Geophysics and Volcanology (INGV) Pisa Lab.

#### 2.4. Micropaleontological Analyses

##### 2.4.1. Diatoms

A total of 64 samples were performed according to the methodology described in [42]. A diatom count was performed under a microscope at a magnification of 1000×. For each sample, at least 300 diatom valves were counted for each slide following the counting rules proposed by [43] and taxonomical identification is based on [44]. When the diatom concentration was too low, five hundred fields of view per slide were analysed. The total absolute diatom abundance (ADA) in terms of the number of frustules per gram of dry weight (v/gdw), was calculated using the formula described by [45]. The relative abundance (expressed in %) in each sample was also calculated as the ratio between the diatom species and the total diatom abundance. Relative percentage of each diatom species was estimated as a percentage of the *Chaetoceros* resting spore free diatom assemblage (e.g., [46]). Species occurring at <2% were considered as statistically not significant [47].

##### 2.4.2. Silicoflagellates

Silicoflagellates were counted from 69 samples on the same slides prepared for diatoms. Counts were performed at 200× magnification with an Olympus BX50 light microscope. Up to 60 specimens of *Stephanocha speculum* were counted in each sample, to calculate the Absolute Silicoflagellate Abundance (ASA) in terms of silicoflagellates per gram of dry weight (s/gdw) following the same formula used for diatoms. Depending on silicoflagellate density, a slide surface of 8–250 mm<sup>2</sup> was scanned, resulting in a detectability limit of 0.5–1 × 10<sup>4</sup> s/gdw. Each *S. speculum* specimen was observed at 1000× with immersion oil for morphotype identification, following the taxonomic concepts of [48] and recent review of [49]. Morphotypes were grouped according to their ecological preferences [50] and percent values were calculated only when silicoflagellate density was statistically significant.

##### 2.4.3. Foraminifera

A total of 28 samples were collected to study the planktic and benthic foraminiferal assemblage. The samples were washed through a 63-µm sieve; foraminifera were studied in the sediment fraction >63 µm, using a binocular microscope. When the foraminifera were abundant, the samples were subdivided using a dry splitter until an aliquot containing approximately 300 specimens was obtained. The species counts were carried out only on well-preserved specimens and recorded as the number of specimens of each taxon; these data were subsequently converted into frequency expressed as a percentage and as densities (the number of specimens/g of total sediment). The number of broken and/or etched foraminifera allowed us to calculate the % of fragmentation for each level. All foraminifera were identified at species levels, except for *Lagena* and *Oolina* which were identified at the generic level. The identification mainly follows [51–54]. The online catalogue [55] was used to consult original taxa descriptions.

### 3. Results

#### 3.1. Box Core Description

BC02 (Figure 2) consists of 37 cm of soupy and sticky structureless olive (5Y 5/4) silt to sandy silt sediments. X-rays reveal abundant gravel content more concentrated at the base and at the top of the box. BC03 (Figure 2) is composed of 37 cm of soft and hydrated olive (5y 4/4) silty sand to sandy silt sediments with abundant pebbles more concentrated at the base of the box corer. X-rays reveal that the pebbles are iso-oriented at around 30 cm. A weak bioturbation is present. BC04 (Figure 2) consists of 45 cm of olive (5y 4/4) sticky

structureless sandy silt to silt with sparse pebbles more concentrated at the top and bottom of the box.

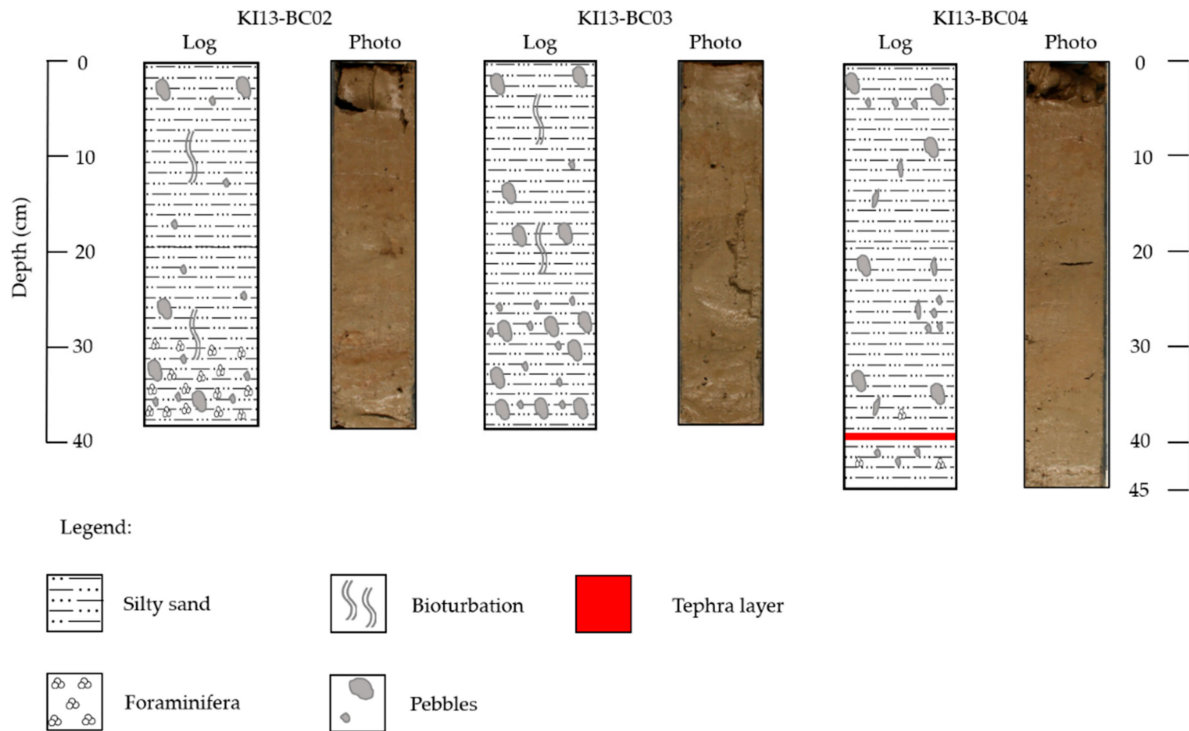


Figure 2. Sedimentological log and photo of three box cores.

### 3.2. Age Model

The chronological reconstruction based on the calibrated ages corresponds to time intervals spanning from 24 ka BP to the late Holocene. The age-depth model was calculated using a linear interpolation function between dated levels (Figure 3).

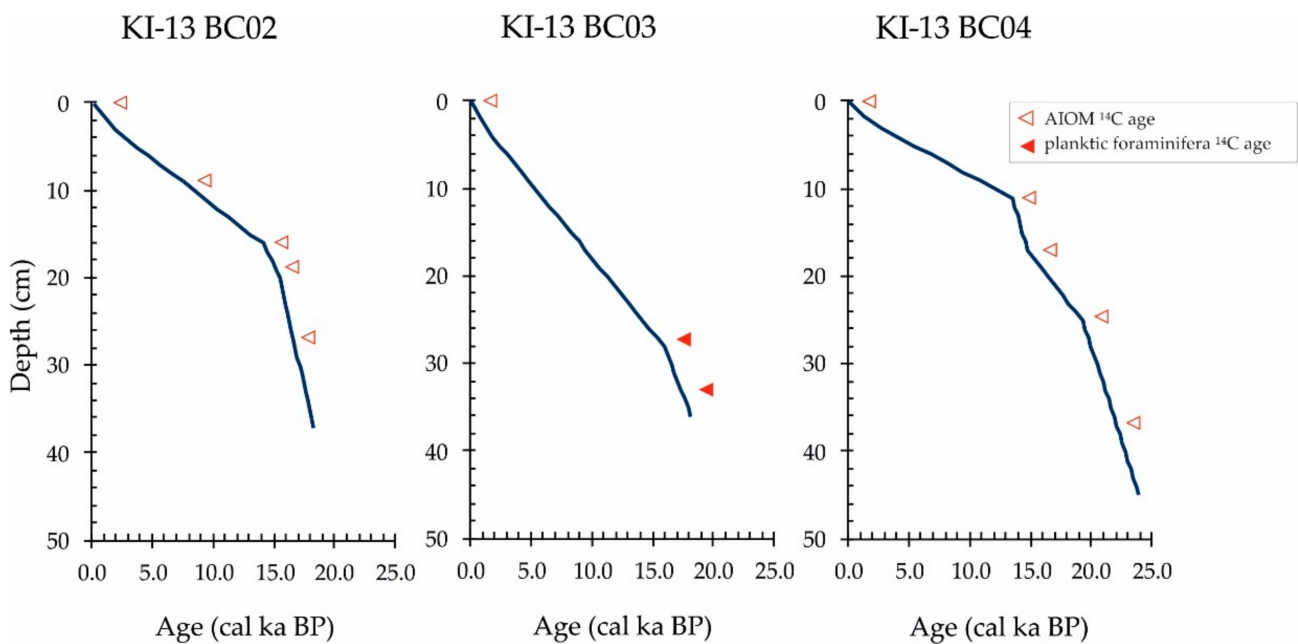


Figure 3. Age–depth model based on the linear interpolation of best point calibration ages from AMS.

Sedimentation rates are variable among the box cores (Figure 3). As a general rule, the box cores show the highest sedimentation rates (from 3.62 to 5.99 cm/ky, without considering a temporary drop in BC 04) for the levels approximately older than 15 ka BP, whereas the lowest sedimentation rates (from 0.74 to 1.70 cm/ky) characterise the entire Holocene.

### 3.3. Sediment Grain Size

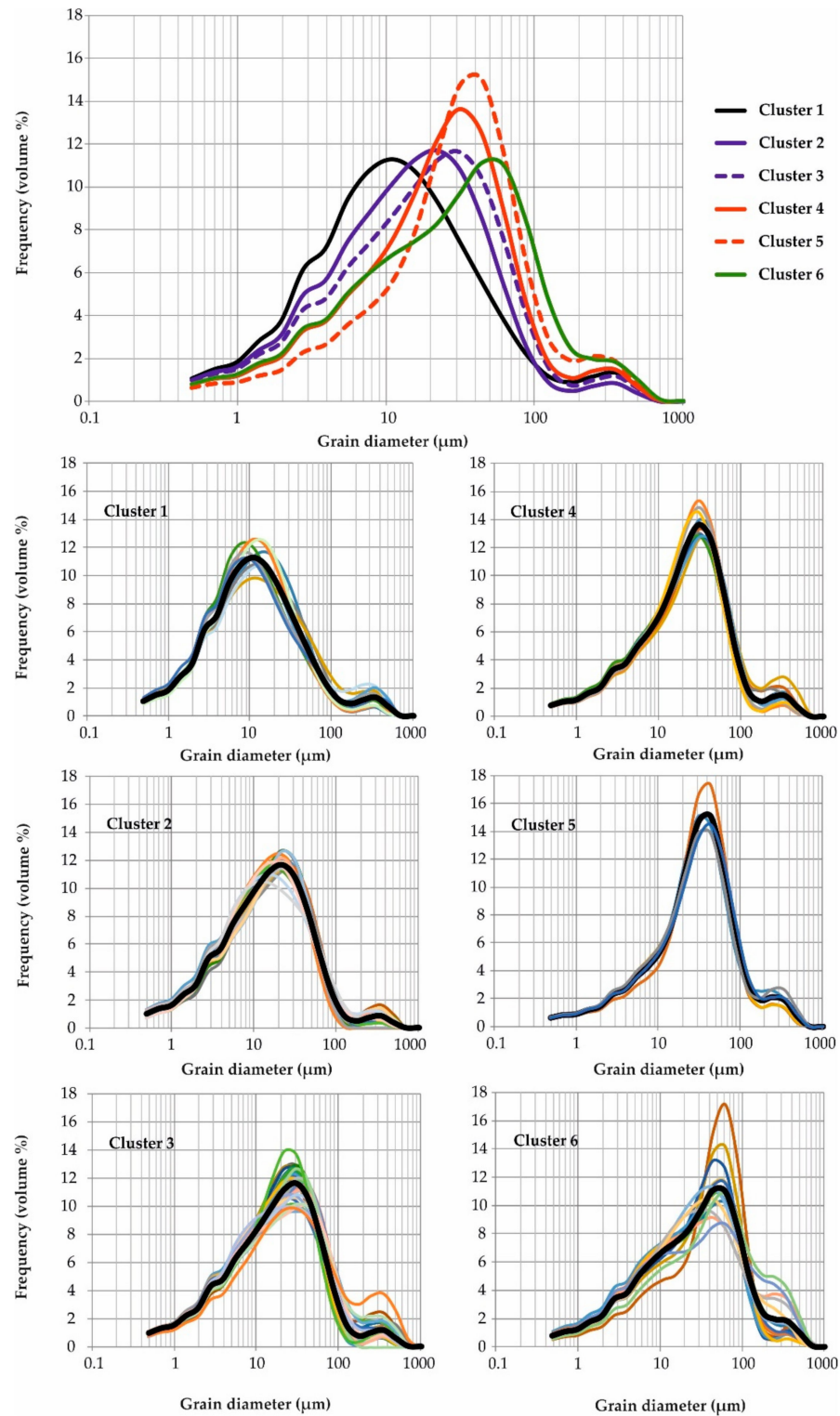
The raw grain-size data are reported in Table S1 and the grain size box core detailed description can be found in Supplementary S1.

The statistical approach allows for the grouping of samples in six clusters (Table S1) with a marked similarity of two pairs of clusters (2 and 3, as well as 4 and 5). Mean grain size distributions are represented in Figure 4 and the main statistical parameters of each cluster are summarised in Table 3. The continuum given by the sequence of clusters from one to five represents the progressive increase in sand and sortable silt (*sensu* Mc Cave et al. [40]), both in terms of proportion to the entire <63  $\mu\text{m}$  fraction (SS%) and the mean SS size. Accordingly, the central tendency parameters (mean and median) also increase from cluster 1 to 5, representative of a clear shifting of the primary mode of the grain size distribution of each cluster (see Figure 4), from 10  $\mu\text{m}$  (cluster 1), 20  $\mu\text{m}$  (cluster 2), 30  $\mu\text{m}$  (cluster 3), 35  $\mu\text{m}$  (cluster 4), to 40  $\mu\text{m}$  (cluster 5). Cluster 6 represents a separate group of samples with the coarsest mode (55  $\mu\text{m}$ ) and a poorly sorted distribution, markedly asymmetrical.

**Table 3.** Main grain size data and statistical parameters for each grain size cluster. Mz,  $\sigma_i$ , Sk and Kg are the mean size, sorting, skewness and kurtosis according to [38], C is the 1st percentile, M is the median, SS is the sortable silt, calculated according to [40].

		Sand	Silt	Clay	Mz	$\sigma_i$	Sk	Kg	C	M	>1 mm	SS%	SSmean
		%	%	%	$\Phi$	$\Phi$			$\mu\text{m}$	$\mu\text{m}$	counts		$\mu\text{m}$
CLUSTER 1	avg	11.1	81.5	7.4	6.25	1.90	−0.01	1.10	445	13	36	53.5	22.2
	SD	3.2	3.7	0.9	0.15	0.18	0.07	0.08	84	2	16	3.5	0.8
CLUSTER 2	avg	11.2	82.2	6.6	5.99	1.80	0.14	1.01	351	17	25	61.9	24.5
	SD	2.2	2.2	0.9	0.11	0.08	0.05	0.05	123	1	26	2.1	0.6
CLUSTER 3	avg	16.6	77.2	6.2	5.71	1.89	0.17	1.02	428	22	25	64.8	26.1
	SD	3.7	3.5	0.5	0.14	0.11	0.06	0.06	87	2	23	1.9	0.5
CLUSTER 4	avg	19.8	75.4	4.8	5.40	1.82	0.20	1.13	450	28	34	71.3	27.7
	SD	3.6	3.5	0.5	0.14	0.13	0.05	0.06	72	3	18	2.1	0.5
CLUSTER 5	avg	27.4	68.9	3.7	4.98	1.77	0.20	1.30	472	37	61	77.0	30.1
	SD	2.0	2.0	0.2	0.09	0.12	0.05	0.07	52	2	9	2.2	0.9
CLUSTER 6	avg	31.3	63.7	5.0	5.14	2.05	0.19	0.99	493	34	48	65.7	27.5
	SD	5.2	4.6	0.8	0.25	0.16	0.10	0.06	88	7	41	3.4	1.4

In order to extrapolate information on selective processes responsible for the different grain size patterns, we tested the sortable silt signal through the classical SS% vs. mean SS relationship ([39] and references therein). Data are grouped according to the extracted clusters and reported as a whole dataset and in separate relationships, one for each core (Figure 5). Linear correlations are significant in all cases; data are very highly correlated both for the whole dataset ( $r = 0.89$ ) and for each core, corresponding to  $r = 0.93$  for BC02,  $r = 0.89$  for BC03 and  $r = 0.88$  for BC04.

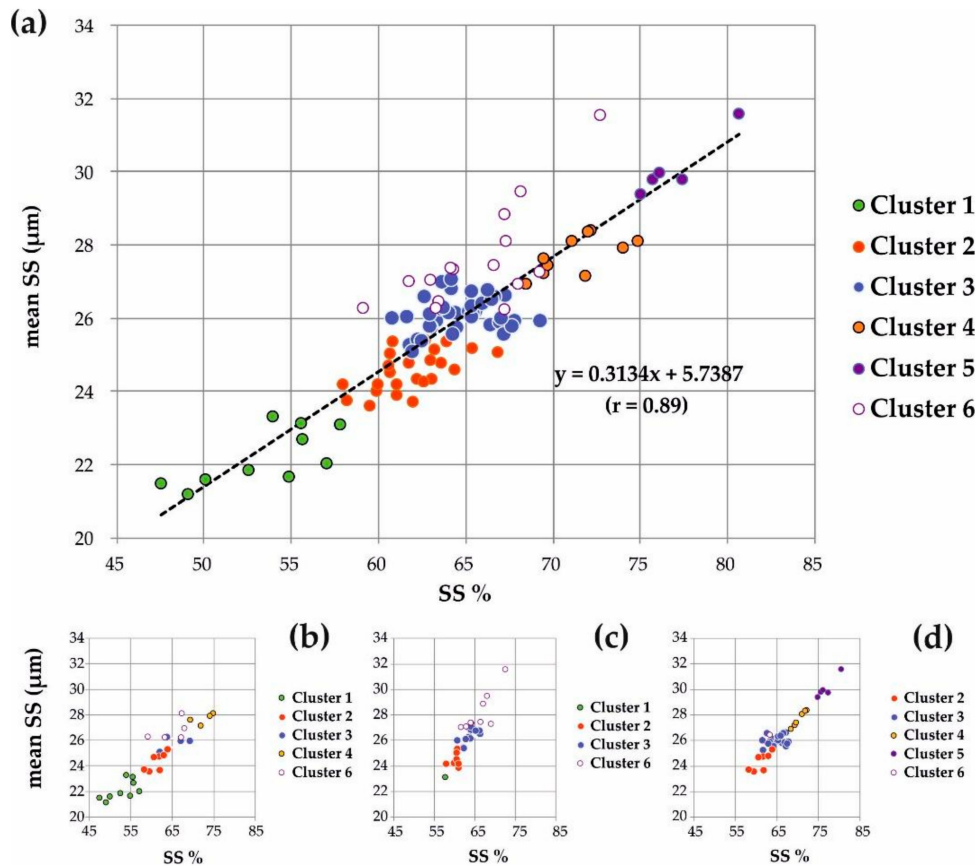


**Figure 4.** Mean grain size distributions of the six extracted clusters (upper plot). The lower plots report the details of the grain size distribution of each cluster, from the finest mode (cluster 1) to the coarsest mode (cluster 6). The black lines represent the mean grain size curves.

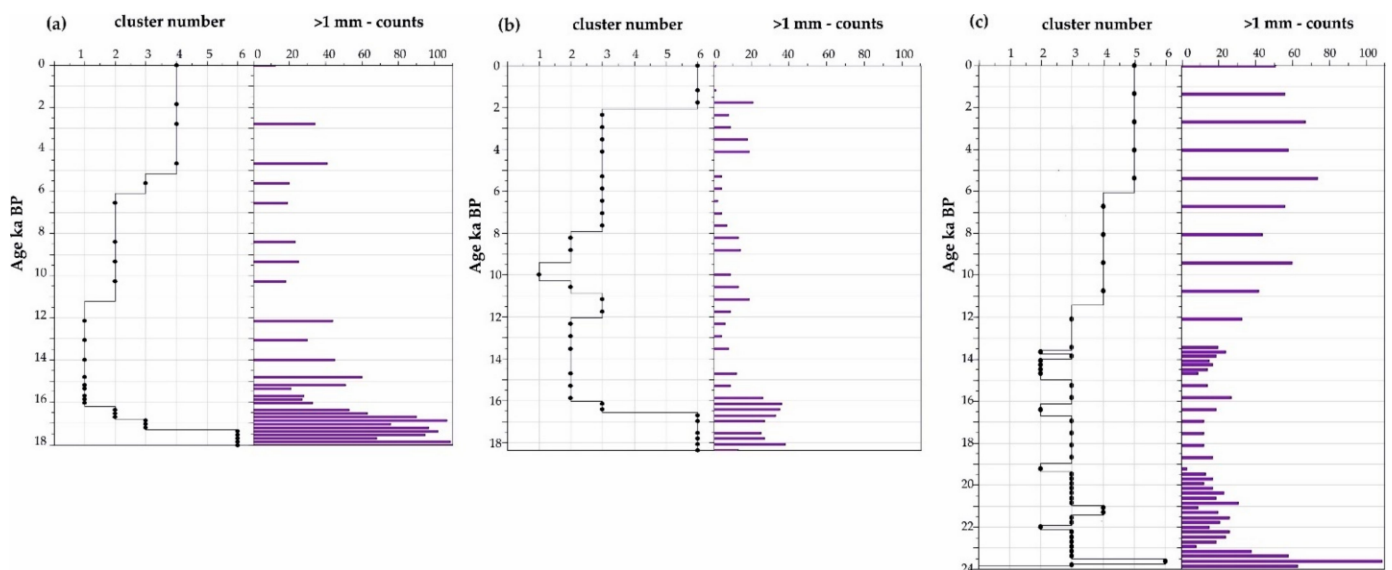
The grain size trend along the three box cores is represented by the vertical distribution of the clusters, (Figure 6). In the same graph the number of dropstones (fraction >1 mm) recovered in the fixed amount of sediment used for the grain size analysis is used as a proxy of the vertical flux linked to the Ice Rafted Debris (IRD). BC02 and BC03 show a



similar fining and subsequent coarsening trend downcore, although not represented by the same cluster sequence. BC04 is texturally quite homogenous, after a coarser 9-cm thick topmost layer (cluster 5 and 4). BC02 and BC04 feature a significant amount of IRD, either at the base of both cores and at the already defined topmost layer of the latter core.



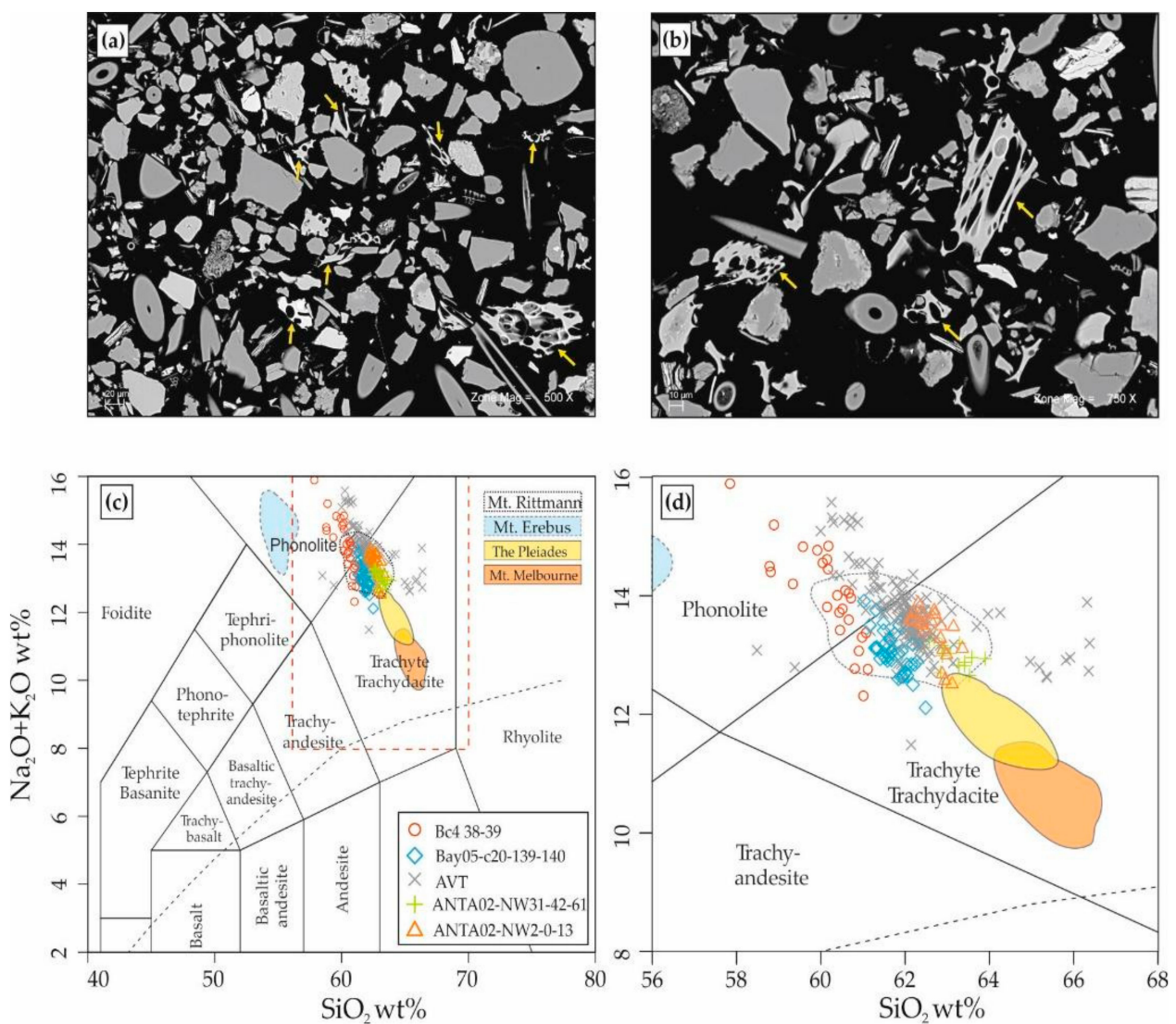
**Figure 5.** Relationship between mean SS and SS% for (a) the whole sediment dataset, (b) core BC02, (c) core BC03, and (d) core BC04, according to the different clusters.



**Figure 6.** Down-core distribution of the grain size clusters and >1-mm fraction: (a) BC02 (b) BC03 (c) BC04.

### 3.4. Cryptotephra Textures and Glass Chemistry

BC04 38-39 cryptotephra is made of glass shards and micropumices set in a matrix made of biogenic (mainly diatoms) and detritic (crystals of quartz and feldspar, granitoids rock fragments, etc.) grains (>32 micron). BC04 38-39 cryptotephra consists of colourless glass shards up to 60–70  $\mu\text{m}$  and micropumices up to 120  $\mu\text{m}$ , respectively, showing pristine morphologies. Micropumices are poorly to moderately vesicular, frothy vesicular to tubular and glass shards comprising blocky, y-shaped to platy-shaped fragments dense to poorly vesicular (Figure 7a,b) [56–61]. Glasses of BC04 38-39 tephra show dominant phonolite compositions with minor trachyte (57.8–61.1 wt%  $\text{SiO}_2$ ; 12.3–15.9 wt%  $\text{Na}_2\text{O}+\text{K}_2\text{O}$ ; (Figure 7c,d) [56–61]. The main compositional variability can be ascribed to the  $\text{Na}_2\text{O}$  that decreases with increasing  $\text{SiO}_2$ , whereas  $\text{FeO}_{\text{tot}}$  (5.9–7.8 wt%),  $\text{Al}_2\text{O}_3$  (16.2–18.1 wt%),  $\text{K}_2\text{O}$  (4.8–5.1 wt%), and  $\text{CaO}$  (0.9–1.6 wt%) contents seem unrelated with  $\text{SiO}_2$  variation.



**Figure 7.** (a,b) SEM backscatter images of glass particles forming the BC4 38-39 cryptotephra; (c,d) Total Alkali Silica (TAS; [56]) classification diagram showing individual glass shard composition in the BC4 38-39 cryptotephra and compared with available analyses of tephra and cryptotephra in the literature from other volcanic centres (Mount Rittmann: [57,58]; The Pleiades: [58]; Mount Melbourne: [58]; Erebus volcano: [59]). Bay05: [58]; AVT: [60]; ANTA02-NW2 and -NW31: [60].

### 3.5. Micropaleontological Contents

#### 3.5.1. Diatom Assemblage

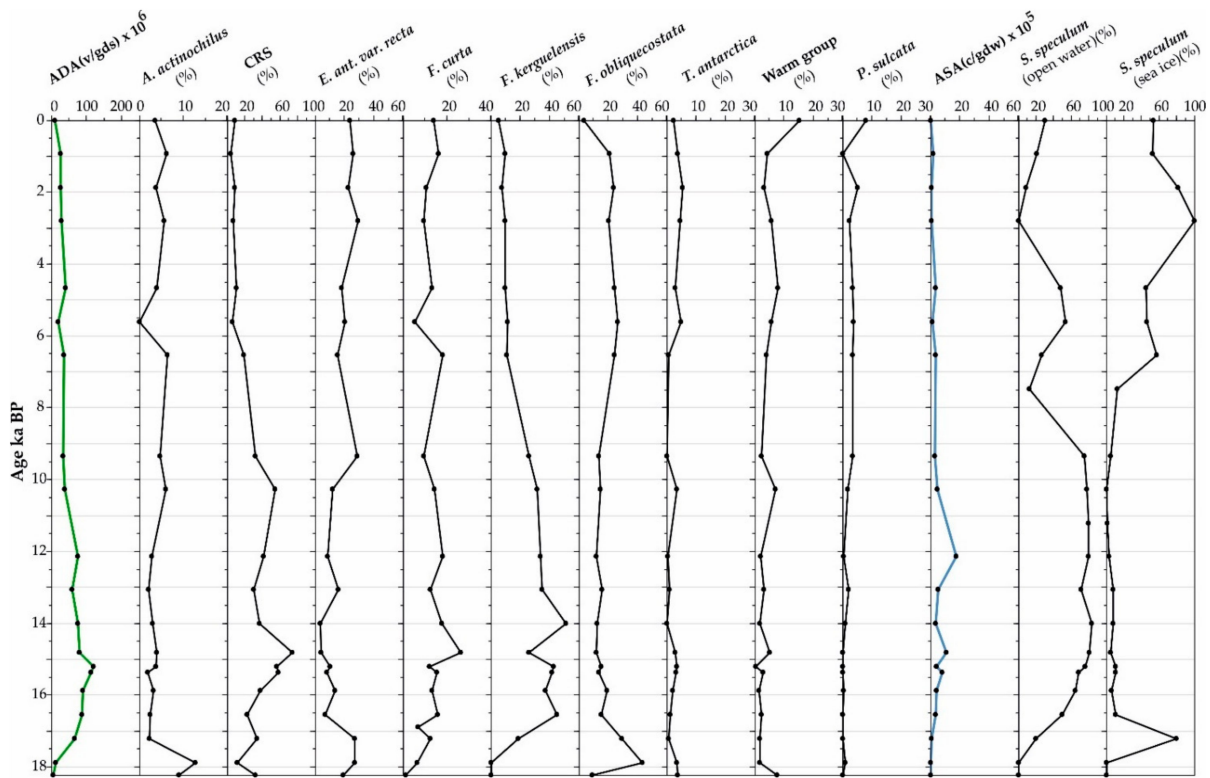
The diatoms are well preserved and do not show dissolution features represented by the loss of valve margin, the breakage of the middle part, distorted or/and conjoined pores on diatom valves, and the breakage of areolae, etc. This is also confirmed, in agreement with [43], by the higher presence of *Fragilariopsis kerguelensis* than *Thalassiosira lentiginosa*. The ecological significance of different taxa can be found in Supplementary S2.

Total absolute diatom abundance (ADA) in BC02 varies between 5.5 and  $120.6 \times 10^6$  valves per gram of dry sediment (v/gds), in BC03 from 9.7 to  $199.1 \times 10^6$  (v/gds) and in BC04 from 4.2 to  $218.4 \times 10^6$  (v/gdw). The diatom record shows low abundance before to 31 cm in BC02, 29 cm in BC03, and 21 cm in BC04 (ca. 17 ka BP), followed by a rapid increase and then at about 14 cm in BC02, 10 cm in BC03 and 10 cm in BC04 (12 ka BP for BC02 and BC04; 9 ka BP for BC03) ka BP ADA decreases towards the core-top.

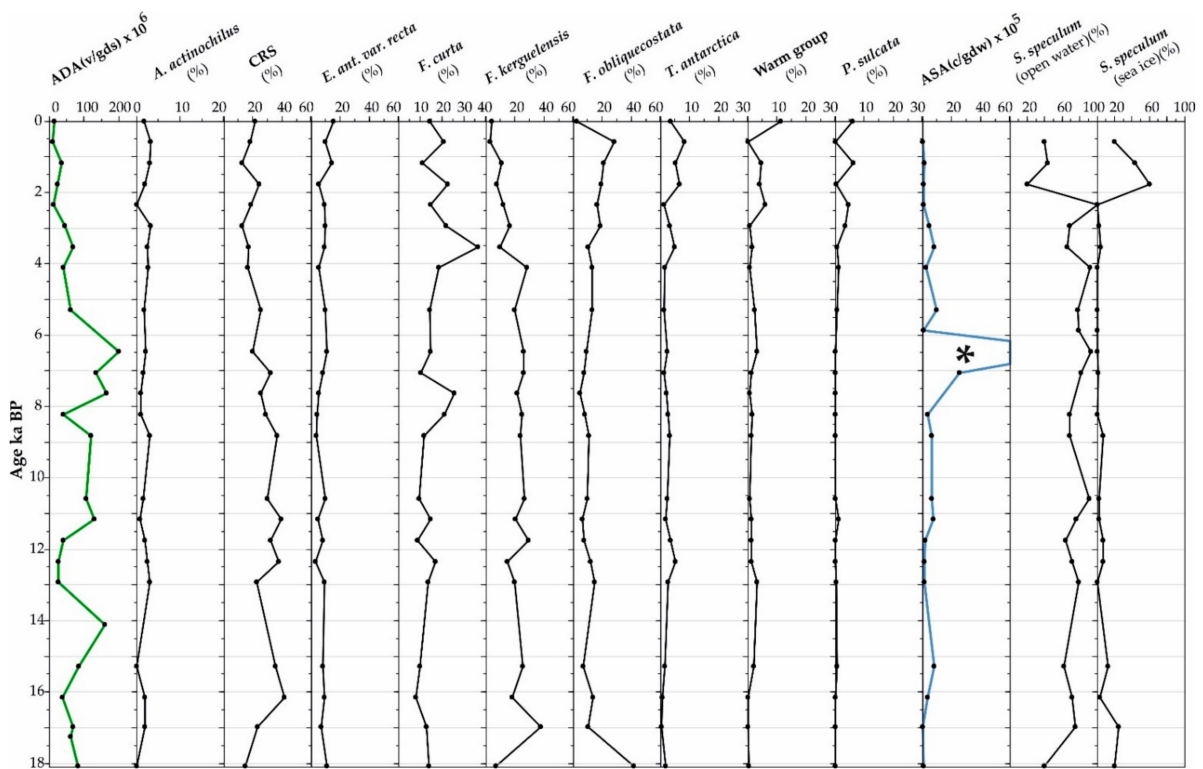
A total of 56 diatom species are identified; the following species mainly characterise the diatom assemblage: *Actinocyclus actinochilus*, *Eucampia antarctica*, *Fragilariopsis curta*, *F. obliquecostata*, *F. kerguelensis*, *Thalassiosira antarctica*, *T. lentiginosa*, *T. oliverana*, and *Chaetoceros hyalochaete* resting spores (CRS). CRS dominate the diatoms assemblage (avg. 30–33%) of all box-cores.

In BC02 (Figure 8), *F. kerguelensis* (avg. 22%) has a positive trend from the core-bottom of the core to 30 cm and then it becomes the dominant species from 30 cm to 8 cm (17 ka BP to 6.5 ka BP), and then it decreases towards the core-top. Relative abundances of *E. antarctica* (avg. 17%) present the downcore opposite trend to the one of *F. kerguelensis* over the entire record. Relative abundances of *E. antarctica* are the highest between the core-bottom and 30 cm (18–17 ka BP) and from 12 cm (10.2 ka BP) to the core-top of the core. *Fragilariopsis obliquecostata* (avg. 18%) presents a higher value until 27 cm (16.5 ka BP), then decreases until 11 cm (9 ka BP). From 11 cm to 2 cm (9 ka BP to 1 ka BP) *F. obliquecostata* slightly increases and subsequently decreases. *Fragilariopsis curta* (avg. 13%) increases from the core-bottom to 19 cm (18–15 ka BP), and then decreases until 12 cm (10.2 ka BP), and it increases again from 12 cm to the core-top (10.2 ka BP–present). The “warm water group”, represented by the sum of *Thalassiosira lentiginosa*, *T. oliverana*, and *T. gracilis* (avg. 4%), presents a very low relative abundance, increasing towards the core-top. *Actinocyclus actinochilus* (avg. 4%) presents the highest value from the core-bottom to 30 cm (18–17 ka BP). *Paralia sulcata* (avg. 2%) increases from 12 cm to the core-top (10 ka BP to present) with the highest value at the top.

In BC03 (Figure 9), *F. kerguelensis* (avg. 19%), increased from 33 cm (17.2 ka BP), becoming the dominant species from 29 cm to 10 cm (17 ka BP to 6.5 ka BP). *F. curta* (avg. 18%) presents a constant trend from 17 cm to 8 cm (14–6.5 ka BP), then increases until 5 cm (4 ka BP) and decreases towards the core-top. Relative percentages of *E. antarctica* (avg. 15%) then decrease from the core-bottom to 17 cm (18–9.4 ka BP) than increase towards the core-top. *F. obliquecostata* (avg. 12%) has the highest value at the bottom (18 ka BP) and at 2 cm (1 ka BP). From 33 cm to 8 cm (17–6.5 ka BP) it presents a lower value, subsequently increasing until 2 cm (1 ka BP). The “warm water group” (avg. 2%) presents low abundances and increases from 5 cm (3.8 ka BP) to the core-top. *P. sulcata* is present from 8 cm (6.5 ka BP) .



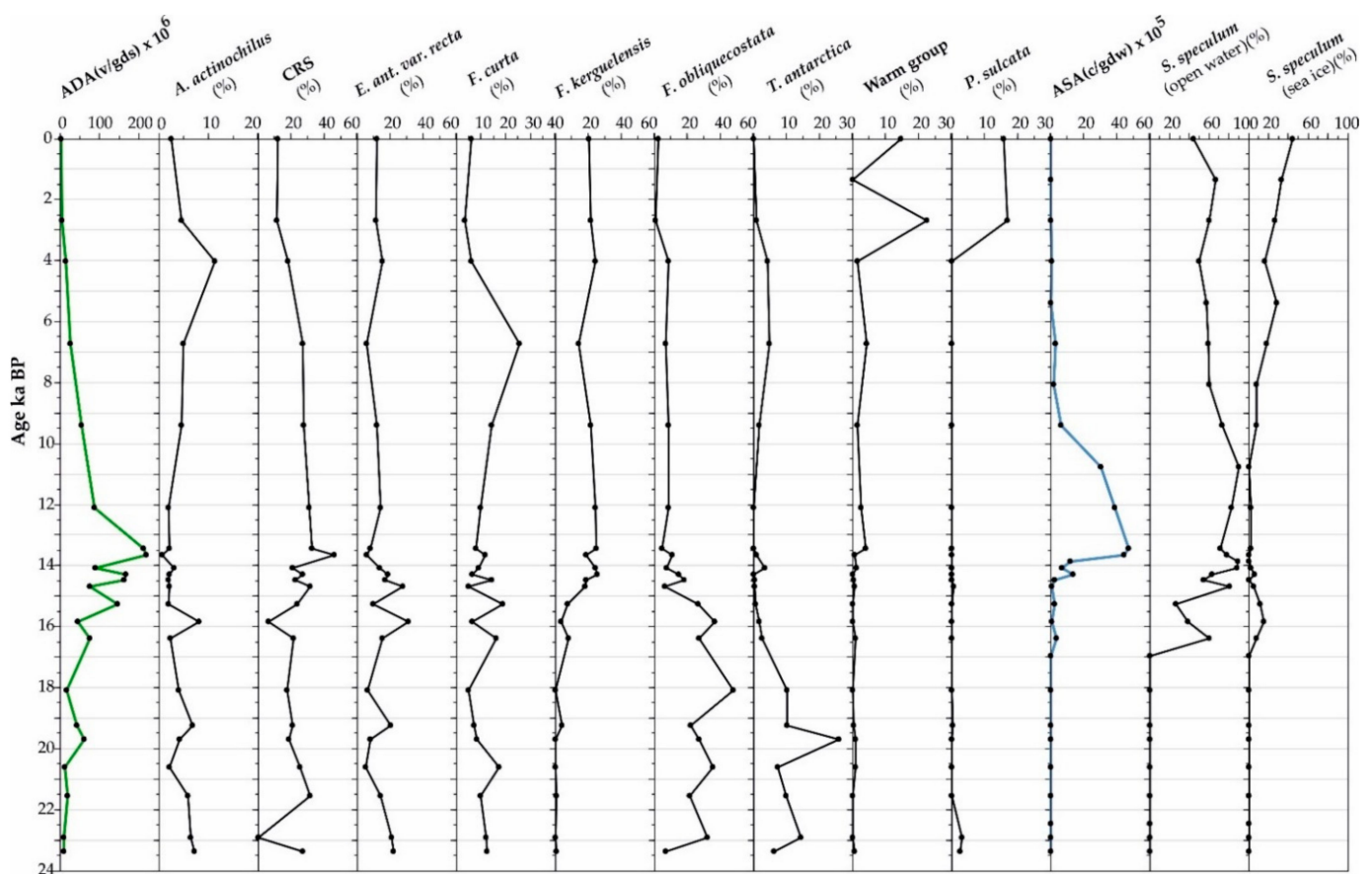
**Figure 8.** Down-core distribution of diatom and silicoflagellate present in BC02. The variety *S. speculum* var. *monospicata* and var. *bispicata*, with var. *speculum*, represent the open ocean, while *S. speculum* var. *coronata* represents the marginal ice zone and the Ross Sea coastal areas.



**Figure 9.** Down-core distribution of diatom and silicoflagellate present in BC03. The variety *S. speculum* var. *monospicata* and var. *bispicata*, with var. *speculum*, represent the open ocean, while *S. speculum* var. *coronata* represents the marginal ice zone and the Ross Sea coastal areas. The asterisk indicates values out of scale ( $112.23 \text{ c/gdw} \times 10^5$ ).



In BC04 (Figure 10), *F. obliquecostata* (avg. 17%) increases from the core-bottom to 19 cm (24–16 ka BP), and then decreases towards the core-top. *E. antarctica* (avg. 14%) presents high percentage values from the core-bottom to 14 cm (24–14 ka BP), then decreases towards the core-top. Similar to BC02 and BC03, *F. kerguelensis* (avg. 13%) increases from 19 cm (16 ka BP) and presents high values to the entire downcore trend. *F. curta* (avg. 11%) presents a constant trend until 21 cm (17 ka BP), and then slightly increases until 7 ka BP, and subsequently decreases from 7 ka BP to the core-top. In BC04, *T. antarctica* (avg. 5%) is present from the core-bottom to 21 cm (24 ka BP to 17 ka BP). The “warm water group” (avg. 3%) presents a low value and increases from 4 cm to the core-top (4 ka BP–present). In contrast, from BC02 and BC03, *P. sulcata* in BC04 reaches the maximum abundances increase from 4 cm to the core-top (4 ka BP–present).



**Figure 10.** Down-core distribution of diatom and silicoflagellate present in BC04. The variety *S. speculum* var. *monospicata* and var. *bispicata*, with var. *speculum*, represent the open ocean, while *S. speculum* var. *coronata* represents the marginal ice zone and the Ross Sea coastal areas.

### 3.5.2. Silicoflagellates

Silicoflagellates are represented by only one species, *Stephanocha speculum* (see Supplementary S2), which shows good preservation in all samples (Figures 8–10). Silicoflagellates are scarce before 33 cm in BC2 and 23 cm in BC04 (ca. 18 ka BP), then increase in abundance with ASA values of  $6.0 \times 10^4$ – $1.6 \times 10^6$  skeletons/gdw in BC02,  $4.9 \times 10^4$ – $11.0 \times 10^6$  in BC03, and  $0.6 \times 10^4$ – $4.7 \times 10^6$  in BC04, and then decrease towards the core-top of all the box-cores.

Within *S. speculum*, the most abundant varieties are var. *speculum*, var. *monospicata*, and var. *coronata*, grouped together as the open ocean varieties. Among these varieties, rare forms with pentagonal/heptagonal outline or with a large apical ring are included. In BC02 (Figure 7), the cumulative abundance of the open ocean varieties is above 50%



between 27 and 11 cm (16.5 and 9 ka BP), then drops at 9–8 cm (7.5–6.5 ka BP), increases again to ~50% at 7–6 cm (5.6–4.6 ka BP), and then decreases to values below 21% in the upper 4 cm (latest 2.8 ka BP); in BC03 (Figure 8) it is above 60% from 32 to 5 cm (17 to 2.3 ka BP), then decreases to lower values in the upper 4 cm (latest 1.7 ka BP); in BC04 (Figure 9), it is above 50% at 20 cm (16.4 ka BP), then decreases and increases again from 17 cm to the core-top (14.7 ka BP–present), remaining high up to the core-top.

*S. speculum* var. *coronata* shows in contrast higher relative abundance in the bottom and top samples: in BC02, it displays high relative abundance at 31 cm (17.2 ka BP) then decreases, while in BC04, it increases to peak values at 19 cm (15.8 ka BP), then decreases. A slight increase in its percent values is observed in both BC02 and BC04 at 11 cm for BC02 and 8 cm for BC04 (9.5 ka BP) and a further increase by 6.5 ka BP, with higher percentage values in BC02 as compared to BC04. *S. speculum* var. *coronata* also includes morphologies with a large apical ring, typically indicated as var. *minuta* [61,62]. The latter constitutes up to 10% in BC03 and BC04 and up to 20–38% in the top samples of BC02. Finally, other varieties are represented by forms with an incomplete crown of apical spines and by aberrant morphologies, i.e., forms with an unclosed basal ring, doubled apical ring or forked spines: all these are usually a minor component of the *S. speculum* assemblage.

### 3.5.3. Foraminifera

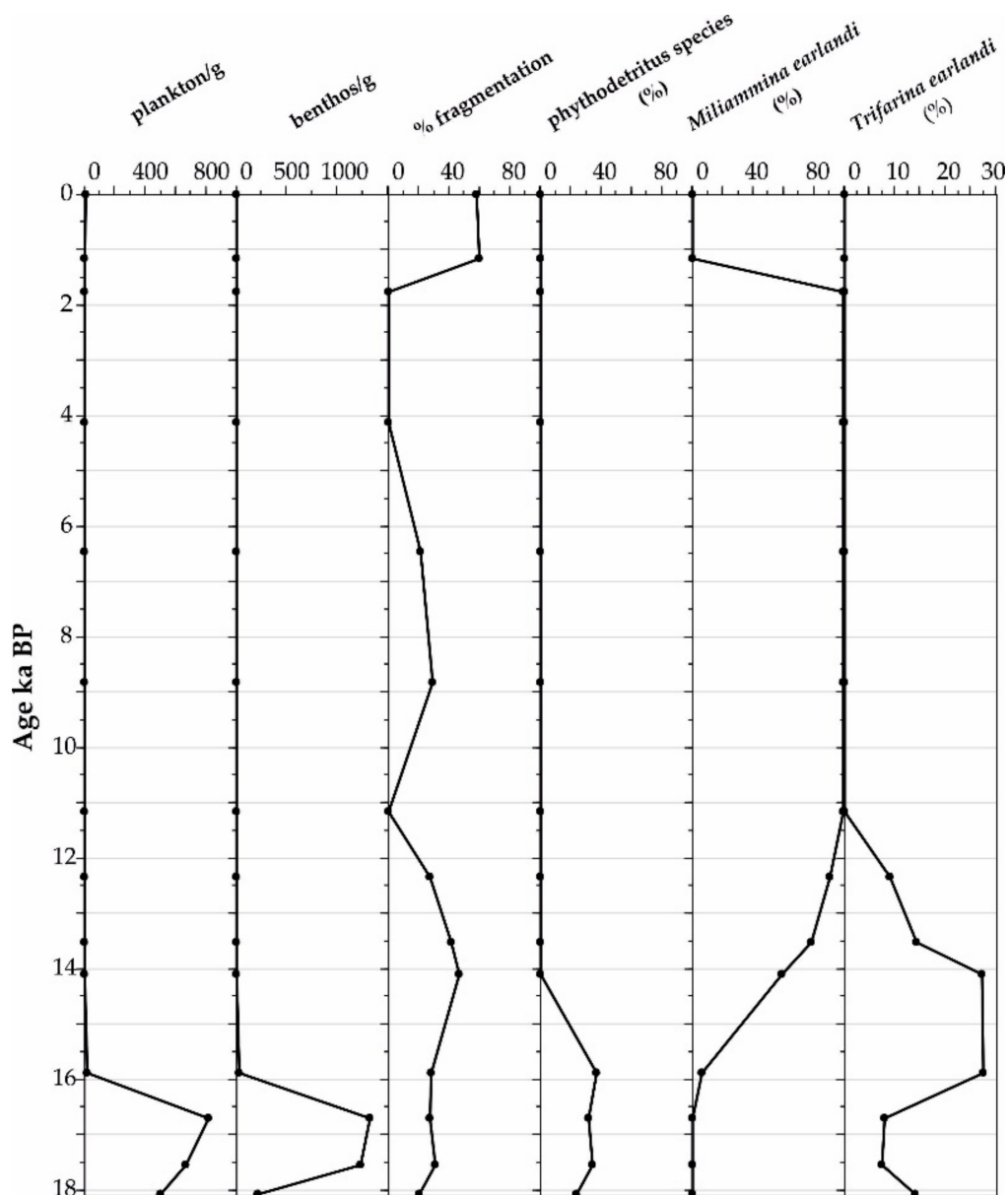
Planktic and benthic foraminifera are present in BC03 and BC04; on the contrary, they are represented only by rare benthic agglutinated and fragmented taxa. Ecological significance of different taxa can be found in Supplementary S2.

*Neogloboquadrina pachyderma* (adults and juvenile tests) is the only planktic species recorded in the investigated sediments. In BC03, *N. pachyderma* varies from 1 to 818 specimens/g and is abundant from 36 to 28 cm (18–16 ka BP), reaching its maximum value at 31 cm (16.7 ka BP) (Figure 11).

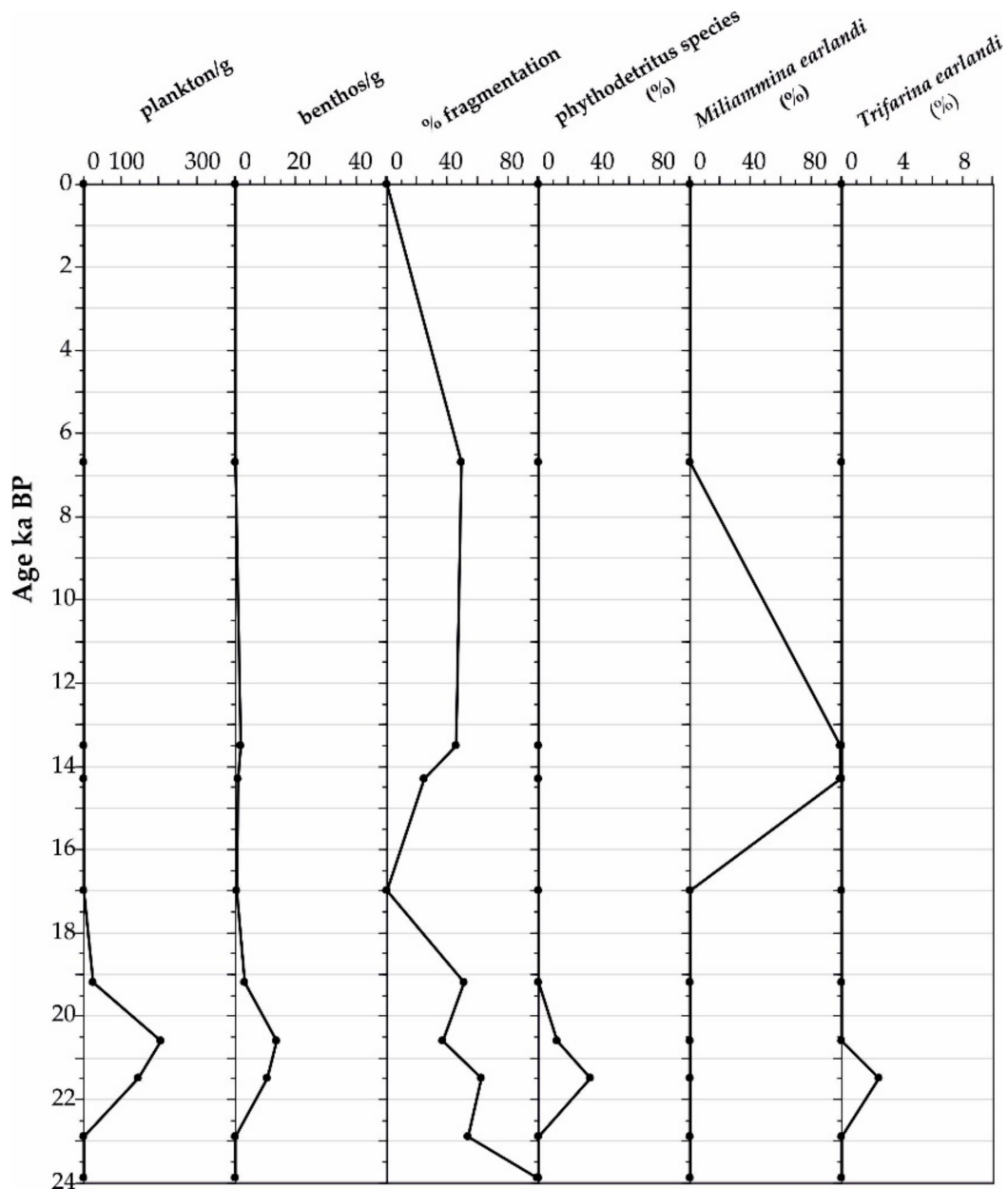
In this interval (18–16 ka BP), adult and juvenile specimens are recorded with a comparable abundance. In the sediments above 24 cm (younger than 14.1 ka BP), *N. pachyderma* is very rare or absent and when present is only represented by adult forms. In BC04, *N. pachyderma* is present from 35 to 25 cm (21.5–19.2 ka BP) with a density ranging from 26 to 206 specimens/g (Figure 12). It reaches the maximum presence at 31 cm (20.6 ka BP). Otherwise, it is nearly absent. In this box-core, only adult specimens are present. Tests of *N. pachyderma* are well-preserved and do not show dissolution or fragmentation.

Twenty-three benthic foraminifera species and twenty-one genera were identified (Supplementary S3). The most abundant species are *Alabaminella weddellensis*, *Epistominella exigua*, *Cibicides lobatulus*, *Globocassidulina biora*, *Globocassidulina subglobosa*, *Nonionella iridea* and *Trifarina earlandi*.

In BC03 (Figure 11), the benthic foraminifera density varies from 215 (36 cm, 18.1 ka BP) to 1318 specimens/g (31 cm, 16.7 ka BP), in the lower portion of the box core (Figure 11). Their presence then rapidly decreases from 25 cm (14.1 ka BP) and they are absent in the upper 3 cm (from 1.2 ka BP). The most abundant species are *T. earlandi* (avg. 8%), *E. exigua* (avg. 7%), *C. lobatulus* (avg. 3%), *N. iridea* (avg. 3%), *G. biora* (avg. 3%), *A. weddellensis* (avg. 2%) and *G. subglobosa* (avg. 1%). *Miliammina earlandi*, agglutinated taxon, is abundant from 25 cm (14.1 ka BP) and is the only species present from 20 to 4 cm (11.2 ka BP to 1.7 ka BP). *E. exigua* and *A. weddellensis* have a similar trend and are abundant from 36 to 28 cm (18.1 ka BP to 15.9 ka BP) (Figure 11). In BC04, benthic species are less abundant and diversified than those of BC03. Their abundance reaches the maximum value of 14 specimens/g at 31 cm (20.6 ka BP) (Figure 12). The most abundant species are *G. subglobosa* (avg. 18%), *Lagena* spp. (avg. 12%) and *E. exigua* (avg. 4.4%) (see Supplementary S3). Agglutinated taxa are represented by *M. earlandi*, which is present at around 11–15 cm (14 ka BP). *Epistominella exigua* and *A. weddellensis* occur at around 31–35 cm (21 ka BP). *Globocassidulina subglobosa* is present from 35 to 25 cm (21.5–19.2 ka BP). In BC04, the test fragmentation is very high (over 50% in almost the entire carbonate interval from 25 to 35 cm (21.5–19.2 ka BP) (Figure 12).



**Figure 11.** From left to right: down-core distribution in BC03 of planktic *N. pachyderma* and benthonic foraminifera (as the number of specimens per gram of dry sediment), fragmentation (%), and relative abundance (%) of benthic foraminifera. The phytodetritus species includes the % of *A. weddellensis* and *E. exigua*.



**Figure 12.** From left to right: down-core distribution in BC04 of planktic *N. pachyderma* and benthonic foraminifera (as the number of specimens per gram of dry sediment), fragmentation (%), and relative abundance (%) of benthic foraminifera. The phythodetritus species includes the % of *A. weddellensis* and *E. exigua*.

## 4. Discussion

### 4.1. Sedimentary Dynamics

As previously observed by Hoffmann et al. [63], an important concern in interpreting sedimentary records is “whether the sortable silt reflects only current-driven sorting, or whether other vectors of sediment supply can bias the record”. As observed in the box cores, IRD is a relevant sedimentary input and may influence grain size due to the delivery of unsorted material. Figure 4 demonstrates a very good fit of the samples from the Central Basin to the typical linear relationship linked to the selection of the SS according to McCave et al. [39]. Cluster 6 represents sediments mostly affected by the influence of the vertical flux due to IRD as found in BC02 and partially in BC03: these samples are those responsible for the bias in the relationship reported in Figure 4. Excluding cluster 6, the correlation coefficient improves from  $r = 0.89$  to  $r = 0.93$ .

The diagram also suggests the goodness of the clustering procedure, since the coarsening (or fining) sequence follows the linear trend, thus inferring the increasing (or reducing) effect of selectivity of the local currents in the sedimentary process affecting the Central Basin.

Given the above considerations, we can deduce that the dominant process is a sedimentation controlled by currents, which tend to modulate intensity in time and space, as seen by the grain size trend (stepwise fining or coarsening) according to different SS modes. The grain sizes conserve a marked modal peak (primary SS subpopulation) which can shift in the order of 5–10  $\mu\text{m}$  from 10  $\mu\text{m}$  to 55  $\mu\text{m}$ . In terms of mean SS each shift of clusters (excluding cluster 6) implies a progressive increase of 1.6 to 2.4  $\mu\text{m}$ . If we consider the sensitivity (relationship between flow speed and mean SS) proposed by McCave et al. [64], the sedimentological changes linked to each cluster step are due to increase in the current speed between 2.2 and 3.3  $\text{cm s}^{-1}$ . Thus, the fining or coarsening grain size trend, which involves the current-related grain size clusters, implies an overall flow speed variation of ca 7.5  $\text{cm s}^{-1}$ .

The mostly regular presence of SS, the lack of sedimentary structures within the sampled thickness, accompanied by low and variable sedimentary rates (between 0.74 and 4.33  $\text{cm ky}^{-1}$ ) not related to changes in grain size, do exclude turbidity currents as well as intermittent sediment supplies.

The sedimentary records seem more likely to be associated to a continuous flux of glacial sediments, rich in silt, delivered by the Ross Ice shelf [65], maintained in suspension by currents up to the shelf break and further moved towards the Central Basin, where they are captured by the westerly contour-current. The specific physiography of the Central Basin is likely to cause a local gyre, as inferred by the pattern of currents resulting from the longline fishing analysis carried out by Richard et al. [66]. Despite the limitation of the method, longline data suggest a complex movement of the water masses directly around and west of Iselin Bank (Figure 1), due to the control given by the topographic highs. These are likely to induce a circular current pattern inside the Central Basin responsible for the partitioning of the sediments according to the specific places, more or less exposed to the velocity gradient. The above hypothesis could explain the difference in the stratigraphic signal, as well as the different current intensities among the different cores, as recorded by the SS proxy.

The contourite pattern is altered by the vertical flux linked to the IRD, characterising the entire stratigraphic record. Although icebergs and sea ice are currently sources of IRD to the slope sediments, the presence of IRD in the sediment does not affect the typical grain size signal due to the current selection. The similar vertical pattern of grain size sorting in BC02 and BC03 is an interesting aspect that we can only discuss as a mere hypothesis. These two box cores seem to be correlated according to a typical downcurrent fining, considering BC03 as the more exposed site and BC02 as a basin sink. This implies that the current would flow from BC03 to BC02, thus inverting the original westerly direction while decreasing its velocity. We are unable to confirm this pathway, but future investigations may or may not confirm this hypothesis.

#### 4.2. *Cryptotephra: Correlation with Volcanic Source*

The Glass composition of BC04 38–39 cryptotephra plot in the compositional field of phonolite to trachyte and overlap the compositions of the products of Mount Rittmann [57,58,60,67] (Figure 7c,d). These can be clearly distinguished from the pyroclastic products of the other volcanic complexes of North Victoria Land namely Mount Melbourne and the Pleiades volcanoes or from the products of the Mt Erebus volcano, which is located further south than the Central Basin. BC04 38–39 cryptotephra shares a geochemical affinity with several marine tephra and cryptotephra layers recently found interbedded in the Holocene–late Pleistocene sediments of the Ross Sea and in ice records [57,60,61]. The glass compositions of BC04 cryptotephra match those of the 1254 C.E. (or  $1252 \pm 2$ ) tephra from Mount Rittmann widespread in the marine sediments from Cape Hallett [31,57] and in the ice records of the entire West Antarctica [58,68–71]. BC04 38–39 cryptotephra

compositions also match very well with the composition of  $11.1 \pm 1.4$  ka Aviator tephra (AVT tephra) found in the marine sediments of the Aviator Basin ([60], and again derived from the Mount Rittmann. Finally, except for slight differences in  $\text{SiO}_2$  and  $\text{Al}_2\text{O}_3$  content, BC04 38-39 cryptotephra shares a broad geochemical affinity, with two marine tephra layers found in the western Ross Sea constrained by  $^{40}\text{Ar}$ - $^{39}\text{Ar}$  ages at  $23.7 \pm 5.3$  ka BP (ANTA02-NW2-0-13) and  $21.2 \pm 6.4$  ka BP (ANTA02-NW31-42-61), respectively [61], and again correlated to the explosive activity of Mount Rittmann [58].

Unfortunately, it was not possible to directly date BC04 38-39 marine cryptotephra using the radiometric method due to the extremely fine grain size of the particles and the very low abundance of K-feldspar crystals directly derived from the tephra. However, as shown in Figure 2 the age of 22.0 ka BP was obtained by AMS dating of AIOM in BC04 at 37 cm, on top of the cryptotephra. Thus, we can attribute to BC04 38-39 cryptotephra a minimum age slightly older than 22 ka BP. This age is in good agreement with those determined for the two marine tephra found interbedded in the marine sediments of the Drygalski Basin [60], dated by the  $^{40}\text{Ar}$ - $^{39}\text{Ar}$  method between  $23.7 \pm 5.3$  ka (ANTA02-NW2-0-13) and  $21.2 \pm 6.4$  ka BP (ANTA02-NW31-42-61) mentioned above.

In addition to slight differences in the major element composition, we suggest that BC04 38-39 cryptotephra and ANTA02-NW2-0-13 and ANTA02-NW31-42-61 marine tephra layers could be derived from the same eruption and represent the very distal and medial-distal deposits, respectively, of a highly energetic explosive eruption of Mount Rittmann which occurred at ca. 22 ka BP.

#### 4.3. Paleoenvironment Interpretation

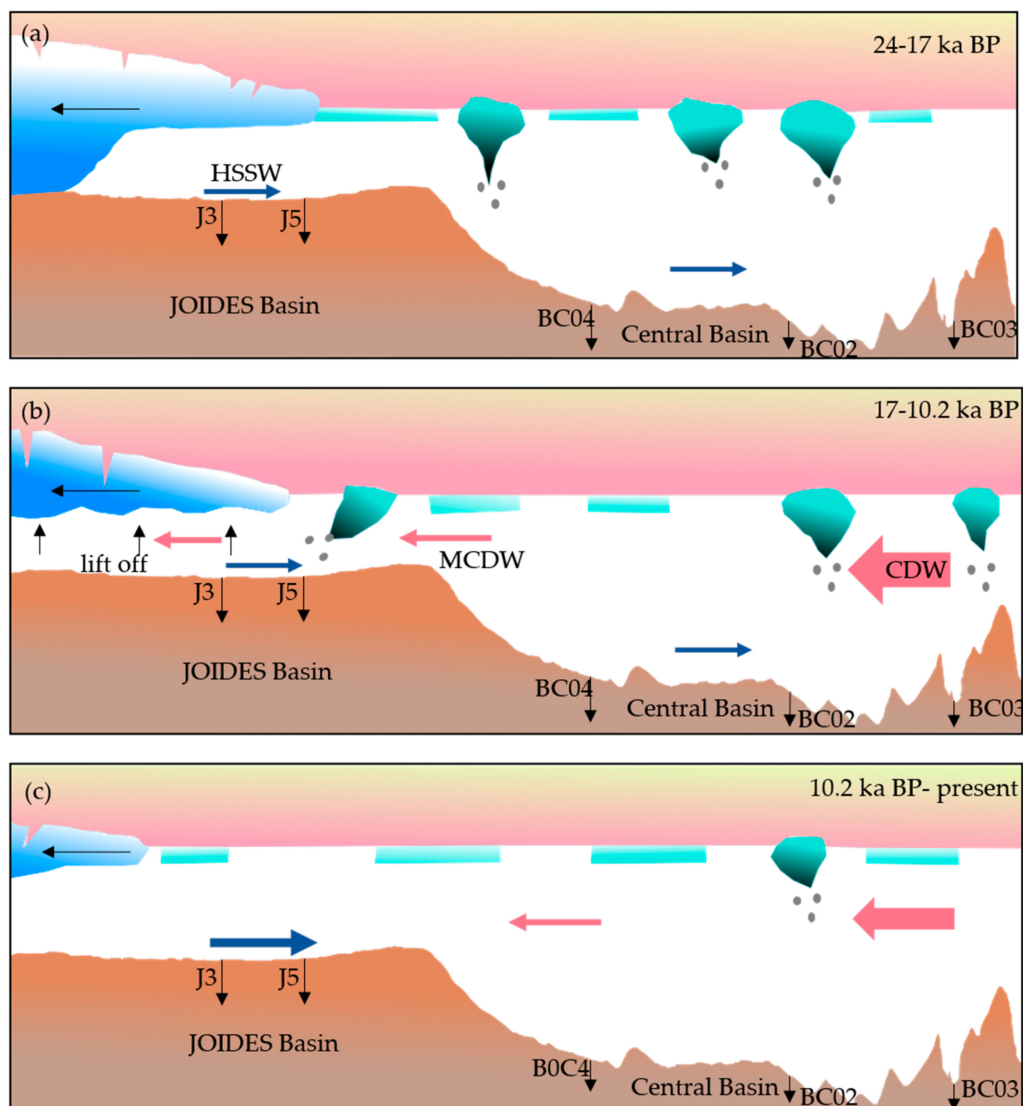
Radiocarbon datings are consistent with their stratigraphic position and therefore the effect of sedimentary reworking is negligible.

On the basis of the age model result, the studied sediments recorded the last 24 ka, which correspond to a part of the Last Glacial Maximum (LGM) (26.5–19 ka BP, *sensu* Clark et al. [72]), the subsequent deglaciation, and the onset of the Holocene. This offers us the possibility to discuss the main phases occurring during this period which are still under debate in terms of its timing, style, and forcing factors (e.g., [9]).

BC04 sampled the oldest sedimentary sequence and allowed for an inference of the environmental and oceanographic condition during the LGM, while BC02 and BC03 record the more recent period and allow for a better understanding of the environmental change during the early stage of the deglaciation and the following Holocene.

The downcore variation in the relative abundance of diatom, silicoflagellate and foraminifera contents and the grain size and tephra data allows for the recognition of three different sedimentary units: Unit 1 (24 ka BP to 17 ka BP), Unit 2 (17 ka BP to 10.2 ka BP), and Unit 3 (10.2 ka BP to present). In Figure 13 we present a schematic sketch of processes occurring in the three sedimentary units.





**Figure 13.** Schematic sketch of the (a) glacial period (b) deglacial period and (c) Holocene period in the Central Basin. The pink arrow indicates Circumpolar Deep Water (CDW), the blue arrow indicates High Salinity Shelf Water (HSSW).

#### 4.3.1. Unit 1: From 24 ka BP to 17 ka BP/Late Pleistocene

During the LGM (global ice-sheet expansion from 26.5 to 19 ka BP, according to Clark et al. [72]), the Ross Ice shelf was grounded on the seafloor (Ice Sheet) near the edge of the continental shelf at the latitude of Coulman Island (Figure 1) [5,9,73–75]. Even if the ice sheet expansion is well documented, the ice shelf cover and its extension still remain poorly constrained. The authors of [9] proposed a model of ice shelf extension starting from 20 ka BP and suggested that the ice shelf covered until the outer sector of the JOIDES basin but the Central Basin has not yet been examined.

In the studied area, Unit 1 (24 ka BP to 17 ka BP) is well represented in BC04 while in BC02 and BC03 only the latest portion of this unit was sampled.

This unit is characterised by silty sediments for the most belonging to cluster 3 (BC04), thus suggesting a dominant contour current able to control the sedimentary processes. The unit features a high gravel content and abundant sand derived from IRD supply. The vertical flux locally tends to alter the current-controlled signal, as highlighted by the presence of cluster 6 in the topmost part of the unit (18–17 ka BP) in BC02 and BC03.

Low ADA and absence of silicoflagellates in this interval are a consequence of high terrigenous supply due to strong glacial influence. In this period, the high relative percentage

of *E. antarctica* which indicates iron enrichment due to ice melting (see Supplementary S2) indicates an environment dominated by iceberg transit and iceberg melting.

The relatively high percentage of *F. obliquocostata* and *A. actinochilus* among diatoms and *S. speculum* var. *coronata* (only detected at 17.2 ka BP in BC02) among silicoflagellates indicate the presence of seasonal sea ice (see Supplementary S2). In BC04, the co-presence of cold and sea ice indicators with *T. antarctica* indicates its vicinity to the ice shelf edge [75] and suggests the proximity to the calving zone [76–78], as well as the ice shelf destabilisation.

Starting from 21 ka BP, the occurrence of calcareous foraminifera is recorded at the site (BC04) closer to the JOIDES Basin. They are characterised by the planktic *N. pachyderma* (only adult tests) and scattered specimens of benthic taxa (Figure 12). Even if the density of *N. pachyderma* is significantly high at 20.5 ka BP (Figure 12), the contemporary presence of numerous fragmented tests (mean fragmentation 51%), led us to consider these foraminifera as transported/reworked. This consideration is in agreement with the influence of bottom currents seen in this period.

A further recovery of calcareous-sediment-rich intervals is also recorded at the site of Hallett Ridge site (BC03), from 18.1 to 15.9 ka BP. In contrast to BC04, the foraminifera here are generally well preserved. They are represented by the planktic *N. pachyderma*, including both adult and juvenile forms. *Neogloboquadrina pachyderma* is able to live in polar oceans, need glacial-free conditions to better proliferate and to reach the reproduction phase [79]. The co-presence of both growth stages of *N. pachyderma* can be the effect of accumulation during different seasons [78]. Similarly, we interpret that their occurrence is indicative of a period characterised by the beginning of open water with seasonal sea ice conditions.

At the same time, the benthic foraminifera are abundant and are mainly represented by *E. exigua*, *A. weddellensis*, *Nonionella* spp., and subordinately by *C. lobatulus*, *G. biora*, *G. subglobosa* and *T. earlandi*. This benthic foraminifera association is normally used to represent sub-ice shelf environments, from proximal to distal, although the presence of *A. weddellensis* and *E. exigua* suggests a more open marine environment [80]. These two small species could also indicate the occasional influence of CDW for this area, as suggested by [80,81].

Similar results of carbonate-rich intervals have been reported either by [82] in the eastern Ross Sea continental margin in a time period spanning from 28.2 to 17.2 ka BP (as uncorrected ages) or by [15] and by [78] in the western Ross Sea continental margin, at around 20 ka BP. Authors of [82] suggested that this carbonate layer was deposited under a destabilisation of the Ross ice shelf–sea ice system likely caused by meltwater pulse (MWP) at 19 ka BP. Authors of [15] suggested that the deposition of carbonate (mainly planktic foraminifera) layer occurred during the glacial period due to the influence of grounded ice sheets on the continental shelf that inhibited the formation of corrosive shelf water and/or due to intense bottom current that allowed preservation by restricting fine material deposition. In our studied area the presence of carbonate is recorded only in those sites (BC03 and BC04) located on two bathymetric highs, whereas carbonates are absent in BC02 due to the greater depth.

To summarise, the co-presence of benthic foraminifera and diatom cold water indicator *F. obliquocostata* and *T. antarctica*, in agreement with the abundance of *N. pachyderma*, *F. curta* and *A. actinochilus*, suggests an environment near the ice shelf calving zone characterised by the presence of IRD and the development of a seasonal sea ice condition, and also confirmed by the presence of the cryptotephra layer in BC04 at 22 ka BP.

The same environmental condition is also reported as a result of the analysis of core J3 collected in the outer section of the JOIDES Basin [25], where the granulated facies representing a lift-off zone or the presence of thin water film [73] is coeval to our unit. The sediments deposited in the Central Basin were therefore likely deposited under strong glacial influence and in the vicinity of the ice shelf calving zone (*sensu* [77]), as also proposed by [11,15] at nearby locations.

The schematic depositional environment during unit 1 is shown in Figure 13a.

#### 4.3.2. Unit 2: From 17 ka BP to 10.2 ka BP/Late Pleistocene-Early Holocene

The Early Deglacial in Antarctica is reported starting from ~22 to 21 ka BP in the West Antarctic Ice Sheet divide Ice core (WDC) (West Antarctic Ice Sheet (WAIS) Divide Project members, 2013 [82]). In contrast different studies based on model and ice core data (Epica Dome C) have hypothesised that the atmospheric warming that drove the deglaciation, following the LGM maximum ice extent, began at 18 ka BP [83–88]. The timing of the ice sheet and consequently ice shelf retreat did not start at the same time in the Antarctic region [5,88–91]. Regarding the western sector of the Ross Sea, the maximum extension of glaciers reached the mid-outer shelf of the JOIDES Basin during the LGM [5,73] and the open water condition began to develop at about 14 ka BP [9].

In our sediments the first evidence of decreasing glacial influence is demonstrated by the inflow of warm waters. This occurs at ~17 ka BP in the two offshore sites (BC02 and BC03), and then in BC04, in which the inflow of warm water occurred from ~16 ka BP.

In this unit we detected the maximum values of ADA and ASA as previously reported in studies performed on cores from the northwest Ross Sea cores [11,15,25,78,92]. The increase in siliceous microfossil concentration testifies to an increase in primary productivity, also indicated by the presence of the phytodetritus benthic foraminifera *E. exigua* [93]. The change in productivity is caused by the continuous inflow of oceanic warm water and less terrigenous supply due to ice shelf retreat and thus supports the hypothesis of ameliorate climate conditions.

This micropaleontological content matches with siltier sediments and the prevalence of cluster 2 (BC03 and BC04) and cluster 1 (BC02) representative of very slow currents, with the exception of the timing interval 16–15 ka BP in BC03 where cluster 3, representative of a more intense current, prevails in agreement with the peak of *T. earlandi*. The beginning of the deglaciation phase, recorded in the three box cores, is marked by the replacement of the cold and sea ice diatoms by the open water taxa, *F. kerguelensis* among diatoms and, the open ocean varieties of *S. speculum* among silicoflagellates (see Supplementary S2). In the offshore sites (BC02 and BC03), the increase in open ocean diatom and silicoflagellates (see Supplementary S2) reached at 16.5 ka BP and corresponds to a drop in ice-related species. In contrast, in the site (BC04) closer to the continental shelf, the increase in open ocean species is interrupted at 16 ka BP by an increase in ice-related species (*F. obliquecostata*, *A. actinochilus* and *S. speculum* var. *coronata*) and the percent maxima of *F. kerguelensis* reached at 14.5–14 ka BP. In the offshore site BC03, the foraminifera strongly decreased from 16 ka BP. Though considerably diminished in absolute abundance, they are still represented by the significant presence of *M. earlandi*, which becomes the only foraminifera present from 11.2 ka BP and above.

This agglutinated taxon has been documented in the diatomaceous sediments of the Ross Sea troughs by [54,80,94] (as *M. arenacea*) during the Late Pleistocene–Holocene transition. The exclusive presence *M. earlandi* and the disappearance of the calcareous foraminifera are normally related to the lower carbonate ion concentration in the deep water, presumably under the influence of the HSSW [14,80].

As pointed out by [30], high abundances of *F. kerguelensis*, are probably due to the intrusion of the warm and nutrient-rich CDW. The correlation with two cores (ANTA99-cJ5 and ANTA99-cJ3 [25] from the JOIDES basin allow us to identify the same *F. kerguelensis* abundances at 13.5 ka BP. This correlation highlighted that the CDW intrusion began from offshore to the continental shelf as well as the increasing distance from the ice shelf calving zone.

Unit 2 thus represents the start of the Deglaciation characterised by the inflow of CDW into the Central Basin and the retreat of the ice shelf onto the JOIDES Basin. The CDW intrusion is first recorded at the outer Central Basin sites and then at the site near the continental shelf margin (Figure 13b).

#### 4.3.3. Unit 3: From 10.2 ka BP to Present

The Holocene period in the Antarctic region is characterised by the AIS retreat in response to the warming ocean and an increase in temperature [87]. During the Holocene, the ice sheet rapidly retreated from the Ross Sea [5] and this led to the establishment of seasonal sea ice. In this unit the sediments show a coarsening trend, suggesting an increase in the contour current velocity.

The decrease in ADA and ASA content recorded in both BC02 and BC04 since 10.2 ka BP documents unfavourable conditions for phytoplankton bloom. The decreased abundance of CRS, especially in the offshore site, reflects the increasing distance of the ice shelf edge, as already observed during the late phase of deglaciation on the Antarctic Peninsula (Barbara et al., 2010), due to the decreased influence of nutrient-rich water from the melting ice shelf.

In the JOIDES Basin, the increase in ice-related species (*F. curta* and *F. obliqucostata*) is observed from 8.2 ka BP [30] and correlates with an increase in ssNa (sea salt Sodium) in ice cores (TALDICE and Taylor Dome) [30], indicating the establishment of a seasonal sea ice cycle and the sea ice extent due to the ice shelf retreats away from the outer sector of the JOIDES Basin. In this time period the JOIDES basin and the Ross Sea Embayment were fully opened as suggested by [95] and later by [30].

As already observed in the previous unit from the early Holocene onwards, calcareous foraminifera are nearly absent in Unit 3 as well and the only benthic species present is *M. earlandi*. The presence of this agglutinated taxon together with the percentage values of *F. kerguelensis* indicates the maintenance of open water conditions [54,80,94–96] at least until 6.5 ka, even though a slight increase and oscillating abundance of ice-related and cold-water species (*F. obliqucostata*, *E. antarctica*, and *S. speculum* var. *coronata*) are observed, especially in the offshore site, suggesting a decreased inflow of CDW. A slight increase in *P. sulcata* from 10.2 ka BP indicates the onset of bottom transport from the shelf and could coincide with the renewed production of HSSW due to wind forcing and sea ice formation.

An increase in sea ice-related species (*F. curta*, *A. actinochilus* and *S. speculum* var. *coronata*) and cold-water-related species (*F. obliqucostata*) is observed from 6.5 ka BP and is associated with low ADA and ASA, low CRS, and a gradual decrease in *F. kerguelensis*. However, the co-occurrence of open ocean and sea ice related species, along with a slight increase in the warm water diatom group point to conditions of seasonal rather than perennial sea ice and a prolonged open water season.

The presence of *P. sulcata* from 4 ka BP, particularly marked in BC04, indicates strengthening and persistent transport from bottom waters also confirmed by the dominance of the grain size found in cluster 5.

The increase in sea-ice related diatom species together with *S. speculum* var. *coronata* is particularly significant in the last 2.5 ka and is higher in the offshore site suggesting colder water conditions. In the same interval, *P. sulcata* is particularly abundant reflecting a stronger influence of the HSSW, whose formation can be related to the establishments of the Ross Sea polynya. Furthermore, the last 2 ka BP is characterized the increase in sand and IRD content which may be related to the presence of icebergs, as evidenced by increased abundances of *E. antarctica*.

To summarise, integrated results suggest that Unit 3 represents the Holocene period characterised by the establishment of seasonal sea ice and intense bottom currents (Figure 13c).

## 5. Conclusions

Micropaleontological, sedimentological and cryptotephra analyses performed on three sediment box-cores allow for the reconstruction of the environmental and oceanographic changes during the LGM–deglacial–Holocene period in the Central Basin of the western Ross Sea.

Micropaleontological investigation allows for the recognition of three stratigraphic units. Unit 1 (from 24 to 17 ka BP) is characterised by a strong glacial influence due to the vicinity to ice shelf calving zone, Unit 2 (17–10.2 ka BP) represents the progressive

receding of the ice shelf calving zone due to CDW inflow. Unit 3 (10.2 ka BP to present) is characterised by the establishment of seasonal sea ice and a strengthening of the bottom current. Moreover, we suggest that the abrupt increase in *F. kerguelensis* may be viewed as an indicator of the beginning of deglaciation and the presence of *P. sulcata* in the offshore area may be viewed as an indicator of the presence of bottom current.

Grain size data highlighted a dominant process of sedimentation controlled by currents, which tended to modulate intensity over time and space, as testified by the grain size central tendency marked by different sortable silt modes. The specific physiography of the Central Basin is likely to cause a local gyre, thus inducing a circular pattern responsible for the partitioning of the sediment according to the specific places, more or less exposed to the velocity gradient.

Finally, this investigation allowed for the identification of a cryptotephra correlated with the explosive activity of Mount Rittmann and dated at c. 22 ka BP. This further confirms the occurrence of highly energetic explosive activity at this volcano in the Late Pleistocene. In addition, this cryptotephra provides a new chronostratigraphic marker for the future dating, correlation and synchronisation of the geological archive in this area.

**Supplementary Materials:** Supplementary materials can be found at <https://www.mdpi.com/article/10.3390/geosciences11040155/s1>.

**Author Contributions:** Conceptualisation E.C. and F.T.; micropaleontological analyses R.M. and A.G. (foraminifera), F.T. (diatoms) and E.M. (silicoflagellates); grain size, M.B. and A.G.; tephra analyses, A.D.R., P.D.C. and B.S.; G.K. organised the <sup>14</sup>C dating at AWI, input to methodology, data validation; age model, R.M.; interpretation of micropaleontological content, F.T., R.M., E.M.; grain size interpretation, E.C. and G.F.; L.C. and C.M. contributed to micropaleontological interpretation, wrote and revised the original manuscript. Project Leaders, funding acquisition, E.C. and B.-K.K. All authors have read and agreed to the published version of the manuscript.

**Funding:** This work was designed in the framework of the STREAM project. This project is co-funded by a grant from the Italian Ministry of Foreign Affairs and International Cooperation and the National Research Foundation of Korea (Korea–Italy Joint Research Program) and partly by KOPRI project (21090).

**Institutional Review Board Statement:** Not applicable.

**Informed Consent Statement:** Not applicable.

**Data Availability Statement:** Micropaleontological data are available on request from the corresponding author. These data are not publicly available as they are objects of PhD thesis. The other data are contained within the article.

**Acknowledgments:** We thank the technicians, captain, and crew of IBRV Araon for their efforts in obtaining sediment samples and geophysical data during the ANA03B expedition. We would like to thank the Italian PNRA (Progetto Nazionale di Ricerca in Antartide) and KOPRI (Korean Polar Research Institute) for funding the campaign. This research used samples provided by the Sorting Center—Trieste Section of the Museo Nazionale dell’Antartide—and it is developed in the framework of the STREAM Project (Late Quaternary evolution of the ocean-ice sheet interactions: the record from the Ross Sea continental margin (Antarctica). EC and BK wish to express their appreciation to the Italian Ministry of Foreign Affairs and International Cooperation (MAECI PGR 00822 and 01060) and PNRA project (2010/A2.07), and the National Research Foundation of Korea (2019K1A3A1A25000116) and KOPRI project (21090), respectively. This is contribution number 2047 of the Marine Science Institute—CNR, Bologna. Many thanks to Karolyn Close for the linguistic revision. We are grateful to the three anonymous reviewers for their suggestions on how to improve the manuscript.

**Conflicts of Interest:** The authors declare no conflict of interest.



## References

1. Camerlenghi, A.; Crise, A.; Pudsey, C.J.; Accerboni, E.; Laterza, R.; Rebesco, M. Ten-month observation of the bottom current regime across a sediment drift of the Pacific margin of the Antarctic Peninsula. *Antarct. Sci.* **1997**, *9*, 426–433. [[CrossRef](#)]
2. Rebesco, M.; Camerlenghi, A.; Geletti, R.; Canals, M. Margin architecture reveals the transition to the modern Antarctic ice sheet ca. 3 MAa. *Geology* **2006**, *34*, 301–304. [[CrossRef](#)]
3. Kim, S.; De Santis, L.; Hong, J.K.; Cottlerle, D.; Petronio, L.; Colizza, E.; Kim, Y.-G.; Kang, S.-G.; Kim, H.J.; Kim, S.; et al. Seismic stratigraphy of the Central Basin in northwestern Ross Sea slope and rise, Antarctica: Clues to the late Cenozoic ice-sheet dynamics and bottom-current activity. *Mar. Geol.* **2018**, *395*, 363–379. [[CrossRef](#)]
4. Castagno, P.; Capozzi, V.; DiTullio, G.R.; Falco, P.; Fusco, G.; Rintoul, S.R.; Spezie, G.; Budillon, G. Rebound of shelf water salinity in the Ross Sea. *Nat. Commun.* **2019**, *10*, 5441. [[CrossRef](#)] [[PubMed](#)]
5. Anderson, J.B.; Conway, H.; Bart, P.J.; Witus, A.E.; Greenwood, S.L.; McKay, R.M.; Hall, B.L.; Ackert, R.P.; Licht, K.; Jakobsson, M.; et al. Ross Sea paleo-ice sheet drainage and deglacial history during and since the LGM. *Quat. Sci. Rev.* **2014**, *100*, 31–54. [[CrossRef](#)]
6. Halberstadt, A.R.W.; Simkins, L.M.; Greenwood, S.L.; Anderson, J.B. Past ice-sheet behaviour: Retreat scenarios and changing controls in the Ross Sea, Antarctica. *Cryosphere* **2016**, *10*, 1003–1020. [[CrossRef](#)]
7. McGlannan, A.J.; Bart, P.J.; Chow, J.M.; DeCesare, M. On the influence of post-LGM ice shelf loss and grounding zone sedimentation on West Antarctic ice sheet stability. *Mar. Geol.* **2017**, *392*, 151–169. [[CrossRef](#)]
8. Lee, J.I.; McKay, R.M.; Golledge, N.R.; Yoon, H.I.; Yoo, K.-C.; Kim, H.J.; Hong, J.K. Widespread persistence of expanded East Antarctic glaciers in the southwest Ross Sea during the last deglaciation. *Geology* **2017**, *45*, 403–406. [[CrossRef](#)]
9. Prothro, L.O.; Majewski, W.; Yokoyama, Y.; Simkins, L.M.; Anderson, J.B.; Yamane, M.; Miyairi, Y.; Ohkouchi, N. Timing and pathways of East Antarctic Ice Sheet retreat. *Quat. Sci. Rev.* **2020**, *230*, 106166. [[CrossRef](#)]
10. Bart, P.J.; Cone, A.N. Early stall of West Antarctic Ice Sheet advance on the eastern Ross Sea middle shelf followed by retreat at 27,500 <sup>14</sup>C year BP. *Palaeogeogr. Palaeoclim. Palaeoecol.* **2012**, *335–336*, 52–60. [[CrossRef](#)]
11. Tolotti, R.; Salvi, C.; Salvi, G.; Bonci, M.C. Late Quaternary climate variability as recorded by micropaleontological diatom data and geochemical data in the Western Ross Sea, Antarctica. *Antarct. Sci.* **2013**, *25*, 804–820. [[CrossRef](#)]
12. Frank, T.D.; James, N.P.; Bone, Y.; Malcolm, I.; Bobak, L.E. Late Quaternary carbonate deposition at the bottom of the world. *Sediment. Geol.* **2014**, *305*, 1–16. [[CrossRef](#)]
13. Bart, P.J.; DeCesare, M.; Rosenheim, B.E.; Majewski, W.; McGLANNAN, A. A centuries-long delay between a paleo-ice-shelf collapse and grounding-line retreat in the Whales Deep Basin, eastern Ross Sea, Antarctica. *Sci. Rep.* **2018**, *8*, 12392. [[CrossRef](#)] [[PubMed](#)]
14. Melis, R.; Salvi, G. Foraminifer and Ostracod Occurrence in a Cool-Water Carbonate Factory of the Cape Adare (Ross Sea, Antarctica): A Key Lecture for the Climatic and Oceanographic Variations in the Last 30,000 Years. *Geoscience* **2020**, *10*, 413. [[CrossRef](#)]
15. Kim, S.; Lee, J.I.; McKay, R.M.; Yoo, K.C.; Bak, Y.S.; Lee, M.K.; Roh, Y.H.; Yoon, H.I.; Moon, H.S.; Hyun, C.U. Late Pleistocene paleoceanographic changes in the Ross Sea—Glacial-interglacial variations in paleoproductivity, nutrient utilization, and deep-water formation. *Quat. Sci. Rev.* **2020**, *239*, 106356. [[CrossRef](#)]
16. Gales, J.; Rebesco, M.; De Santis, L.; Bergamasco, A.; Colleoni, F.; Kim, S.; Accettella, D.; Kovacevic, V.; Liu, Y.; Olivo, E.; et al. Role of dense shelf water in the development of Antarctic submarine canyon morphology. *Geomorphology* **2021**, *372*, 107453. [[CrossRef](#)]
17. Pollard, D.; DeConto, R.M. Modelling West Antarctic ice sheet growth and collapse through the past five million years. *Nature* **2009**, *458*, 329–332. [[CrossRef](#)] [[PubMed](#)]
18. Golledge, N.R.; Menviel, L.; Carter, L.; Fogwill, C.J.; England, M.H.; Cortese, G.; Levy, R.H. Antarctic contribution to meltwater pulse 1A from reduced Southern Ocean overturning. *Nat. Commun.* **2014**, *5*, 5107. [[CrossRef](#)] [[PubMed](#)]
19. DeConto, R.M.; Pollard, D. Contribution of Antarctica to past and future sea-level rise. *Nature* **2016**, *531*, 591–597. [[CrossRef](#)]
20. Colleoni, F.; De Santis, L.; Montoli, E.; Olivo, E.; Sorlien, C.C.; Bart, P.J.; Gasson, E.G.W.; Bergamasco, A.; Sauli, C.; Wardell, N.; et al. Past continental shelf evolution increased Antarctic ice sheet sensitivity to climatic conditions. *Sci. Rep.* **2018**, *8*, 11323. [[CrossRef](#)] [[PubMed](#)]
21. Holland, D.M.; Nicholls, K.W.; Basinski, A. The Southern Ocean and its interaction with the Antarctic Ice Sheet. *Science* **2020**, *367*, 1326–1330. [[CrossRef](#)]
22. Orsi, A.; Wiederwohl, T. A recount of Ross Sea waters. *Deep Sea Res. II Top. Stud. Oceanogr.* **2009**, *56*, 778–795. [[CrossRef](#)]
23. Smith, W.O., Jr.; Sedwick, P.N.; Arrigo, K.R.; Ainley, D.G.; Orsi, A.H. The Ross Sea in a Sea of Change. *Oceanography* **2012**, *25*, 90–103. [[CrossRef](#)]
24. Arndt, J.E.; Schenke, H.W.; Jakobsson, M.; Nitsche, F.O.; Buys, G.; Goleby, B.; Rebesco, M.; Bohoyo, F.; Hong, J.; Black, J.; et al. The International Bathymetric Chart of the Southern Ocean (IBCSO) Version 1.0—A new bathymetric compilation covering circum-Antarctic waters. *Geophys. Res. Lett.* **2013**, *40*, 3111–3117. [[CrossRef](#)]
25. Mezgec, K. Palaeoceanographic Changes during the Post-LGM Deglaciation Phase in the Polar Areas (Ross Sea-Antarctica and Barents Sea-Arctic Cases Studies). Ph.D. Thesis, University of Siena, Siena, Italy, 2015.
26. Wacker, L.; Lippold, J.; Molnár, M.; Schulz, H. Towards radiocarbon dating of single foraminifera with a gas ion source. *Nucl. Instrum. Methods B* **2013**, *294*, 307–310. [[CrossRef](#)]

27. Stuiver, M.; Reimer, P.J.; Reimer, R.W. CALIB 7.1 [WWW Program]. 2018. Available online: <http://calib.org> (accessed on 14 March 2018).
28. Reimer, P.; Bard, E.; Bayliss, A.; Beck, J.; Blackwell, P.; Ramsey, C.; Buck, C.E.; Cheng, H.; Edward, R.L.; Friedrich, M.; et al. IntCal13 and Marine13 Radiocarbon Age Calibration Curves 0–50,000 Years cal BP. *Radiocarbon* **2013**, *55*, 1869–1887. [[CrossRef](#)]
29. Hall, B.L.; Henderson, G.M.; Baroni, C.; Kellogg, T.B. Constant Holocene Southern-Ocean <sup>14</sup>C reservoir ages and ice-shelf flow rates. *Earth Planet. Sci. Lett.* **2010**, *296*, 115–123. [[CrossRef](#)]
30. Mezgec, K.; Stenni, B.; Crosta, X.; Masson-Delmotte, V.; Baroni, C.; Braida, M.; Ciardini, V.; Colizza, E.; Melis, R.; Salvatore, M.C.; et al. Holocene sea ice variability driven by wind and polynya efficiency in the Ross Sea. *Nat. Commun.* **2017**, *8*, 1334. [[CrossRef](#)]
31. Tesi, T.; Belt, S.; Gariboldi, K.; Muschitiello, F.; Smik, L.; Finocchiaro, F.; Giglio, F.; Colizza, E.; Gazzurra, G.; Giordano, P.; et al. Resolving sea ice dynamics in the north-western Ross Sea during the last 2.6 ka: From seasonal to millennial timescales. *Quat. Sci. Rev.* **2020**, *237*, 106299. [[CrossRef](#)]
32. Andrews, J.T.; Domack, E.W.; Cunningham, W.L.; Leventer, A.; Licht, K.J.; Jull, A.J.T.; DeMaster, D.J.; Jennings, A.E. Problems and Possible Solutions Concerning Radiocarbon Dating of Surface Marine Sediments, Ross Sea, Antarctica. *Quat. Res.* **1999**, *52*, 206–216. [[CrossRef](#)]
33. Pudsey, C.J.; Murray, J.W.; Appleby, P.; Evans, J. Ice shelf history from petrographic and foraminiferal evidence, Northeast Antarctic Peninsula. *Quat. Sci. Rev.* **2006**, *25*, 2357–2379. [[CrossRef](#)]
34. Hillenbrand, C.-D.; Smith, J.A.; Kuhn, G.; Esper, O.; Gersonde, R.; Larter, R.D.; Maher, B.; Moreton, S.G.; Shimmield, T.M.; Korte, M. Age assignment of a diatomaceous ooze deposited in the western Amundsen Sea Embayment after the Last Glacial Maximum. *J. Quat. Sci.* **2009**, *25*, 280–295. [[CrossRef](#)]
35. Stuiver, M.; Reimer, P.J.; Reimer, R.W. CALIB 8.2 [WWW Program]. 2021. Available online: <http://calib.org> (accessed on 14 March 2018).
36. Heaton, T.; Köhler, P.; Butzin, M.; Bard, E.; Reimer, R.; Austin, W.; Ramsey, C.B.; Grootes, P.M.; Hughen, K.A.; Kromer, B.; et al. Marine20—The Marine Radiocarbon Age Calibration Curve (0–55,000 cal BP). *Radiocarbon* **2020**, *62*, 779–820. [[CrossRef](#)]
37. Friedman, G.M.; Sanders, J.E. *Principles of Sedimentology*; Wiley: New York, NY, USA, 1978; p. 792.
38. Folk, R.L.; Ward, W.C. Brazos River bar: A study in the significance of grain size parameters. *J. Sediment. Res.* **1957**, *27*, 3–26. [[CrossRef](#)]
39. McCave, I.; Andrews, J. Distinguishing current effects in sediments delivered to the ocean by ice. II. Glacial to Holocene changes in high latitude North Atlantic upper ocean flows. *Quat. Sci. Rev.* **2019**, *223*, 105902. [[CrossRef](#)]
40. McCave, I.N.; Manighetta, B.; Robinson, S.G. Sortable silt and fine sediment size/composition slicing: Parameters for paleocurrent speed and palaeoceanography. *Paleoceanography* **1995**, *10*, 593–610. [[CrossRef](#)]
41. Hammer, Ø.; Harper, D.A.T.; Ryan, P.D. PAST: Paleontological Statistics Software Package for Education and Data Analysis. *Palaeontol. Electron.* **2001**, *4*, 4.
42. Rathburn, A.; Pichon, J.-J.; Ayress, M.; De Deckker, P. Microfossil and stable-isotope evidence for changes in Late Holocene palaeoproductivity and palaeoceanographic conditions in the Prydz Bay region of Antarctica. *Palaeogeogr. Palaeoclim. Palaeoecol.* **1997**, *131*, 485–510. [[CrossRef](#)]
43. Crosta, X.; Koç, N. Diatoms: From micropaleontology to isotope geochemistry. In *Development in Marine Geology, 1, Proxies in Late Cenozoic Palaeoceanography*; Hillaire-Marcel, C., De Vernal, A., Eds.; Elsevier: Amsterdam, The Netherlands, 2007; pp. 27–369.
44. Hasle, G.R.; Syversten, E.E. Marine diatoms. In *Identifying Marine Phytoplankton*; Thomas, C.R., Ed.; Academic Press: San Diego, CA, USA, 1997; pp. 5–385.
45. Armand, L.K. The Use of Diatom Transfer Functions in Estimating Sea-SURFACE temperature and Sea-Ice in Cores from the Southeast Indian Ocean. Ph.D. Thesis, Australian National University, Canberra, Australia, 1997.
46. Etourneau, J.; Collins, L.G.; Willmott, V.; Kim, J.-H.; Barbara, L.; Leventer, A.; Schouten, S.; Damsté, J.S.S.; Bianchini, A.; Klein, V.; et al. Holocene climate variations in the western Antarctic Peninsula: Evidence for sea ice extent predominantly controlled by changes in insolation and ENSO variability. *Clim. Past* **2013**, *9*, 1431–1446. [[CrossRef](#)]
47. Taylor, F.; Sjunneskog, C. Postglacial marine diatom record of the Palmer Deep, Antarctic Peninsula (ODP Leg 178, Site 1098) 2. Diatom assemblages. *Paleoc. Paleoclim.* **2002**, *17*, 8001. [[CrossRef](#)]
48. Malinverno, E. Extant morphotypes of *Distephanus speculum* (Silicoflagellata) from the Australian sector of the Southern Ocean: Morphology, morphometry and biogeography. *Mar. Micropaleontol.* **2010**, *77*, 154–174. [[CrossRef](#)]
49. Jordan, R.; McCartney, K. *Stephanocha* nom. nov., a replacement name for the illegitimate silicoflagellate genus *Distephanus* (Dictyochophyceae). *Phytotaxa* **2015**, *201*, 177–187. [[CrossRef](#)]
50. Malinverno, E.; Maffioli, P.; Gariboldi, K. Latitudinal distribution of extant fossilizable phytoplankton in the Southern Ocean: Planktonic provinces, hydrographic fronts and palaeoecological perspectives. *Mar. Micropaleontol.* **2016**, *123*, 41–58. [[CrossRef](#)]
51. Violanti, D. Taxonomy and distribution of recent benthic foraminifers from Terra Nova Bay (Ross Sea, Antarctica), Oceanographic Campaign 1987/1988. *Palaeontogr. Ital.* **1996**, *83*, 25–71.
52. Murray, J.W.; Pudsey, C.J. Living (stained) and dead foraminifera from the newly ice-free Larsen Ice Shelf, Weddell Sea, Antarctica: Ecology and taphonomy. *Mar. Micropaleontol.* **2004**, *53*, 67–81. [[CrossRef](#)]
53. Majewski, W. Benthic foraminiferal communities: Distribution and ecology in Admiralty Bay, King George Island, West Antarctica. *Pol. Polar Res.* **2005**, *26*, 159–214.

54. Majewski, W.; Bart, P.J.; McGlannan, A.J. Foraminiferal assemblages from ice-proximal paleo-settings in the Whales Deep Basin, Eastern Ross Sea, Antarctica. *Palaeogeogr. Paleoclim. Palaeoecol.* **2018**, *493*, 64–81. [CrossRef]
55. Ellis and Messina Catalogues. Available online: <http://www.micropress.org/> (accessed on 10 December 2020).
56. Le Bas, M.J.; Maitre, R.W.L.; Streckeisen, A.; Zanettin, B.; Rocks, I.S.O.T.S.O.I. A Chemical Classification of Volcanic Rocks Based on the Total Alkali-Silica Diagram. *J. Pet.* **1986**, *27*, 745–750. [CrossRef]
57. Di Roberto, A.; Colizza, E.; Del Carlo, P.; Petrelli, M.; Finocchiaro, F.; Kuhn, G. First marine cryptotephra in Antarctica found in sediments of the western Ross Sea correlates with englacial tephtras and climate records. *Sci. Rep.* **2019**, *9*, 10628. [CrossRef]
58. Lee, M.J.; Kyle, P.R.; Iverson, N.A.; Lee, J.I.; Han, Y. Rittmann volcano, Antarctica as the source of a widespread  $1252 \pm 2$  CE tephra layer in Antarctica ice. *Earth Planet. Sci. Lett.* **2019**, *521*, 169–176. [CrossRef]
59. Harpel, C.; Kyle, P.; Dunbar, N. Englacial tephrostratigraphy of Erebus volcano, Antarctica. *J. Volcanol. Geotherm. Res.* **2008**, *177*, 549–568. [CrossRef]
60. Di Roberto, A.; Albert, P.; Colizza, E.; Del Carlo, P.; Di Vincenzo, G.; Gallerani, A.; Giglio, F.; Kuhn, G.; Macrì, P.; Manning, C.; et al. Evidence for a large-magnitude Holocene eruption of Mount Rittmann (Antarctica): A volcanological reconstruction using the marine tephra record. *Quat. Sci. Rev.* **2020**, *250*, 106629. [CrossRef]
61. Del Carlo, P.; Di Roberto, A.; Di Vincenzo, G.; Bertagnini, A.; Landi, P.; Pompilio, M.; Colizza, E.; Giordano, G. Late Pleistocene-Holocene volcanic activity in northern Victoria Land recorded in Ross Sea (Antarctica) marine sediments. *Bull. Volcanol.* **2015**, *77*, 36. [CrossRef]
62. Bukry, D. Silicoflagellate stratigraphy of offshore California and Baja California, Deep Sea Drilling Project Leg 63. In *Initial Reports of the DSDP*; Yeats, R.S., Haq, B.U., Pisciotto, K.A., Eds.; U.S. Government Printing Office: Washington, DC, USA, 1981; Volume 63, pp. 595–610.
63. Hoffmann, S.S.; Dalsing, R.E.; Murphy, C.S. Sortable silt records of intermediate-depth circulation and sedimentation in the Southwest Labrador Sea since the Last Glacial Maximum. *Quat. Sci. Rev.* **2019**, *206*, 99–110. [CrossRef]
64. McCave, I.N.; Thornalley, D.J.R.; Hall, I.R. Relation of sortable silt grain-size to deep-sea current speeds: Calibration of the ‘Mud Current Meter’. *Deep Sea Res. Part I Oceanogr. Res. Pap.* **2017**, *127*, 1–12. [CrossRef]
65. Andrews, J.T.; Principato, S.M. Grain-size characteristics and provenance of ice-proximal glacial marine sediments. *Geol. Soc. Lond. Spec. Publ.* **2002**, *203*, 305–324. [CrossRef]
66. Richard, G.J.; Roberts, M.J.; Williams, M.J.; Dunn, A.; Smith, M.H. Mean circulation and hydrography in the Ross Sea sector, Southern Ocean: Representation in numerical models. *Antarct. Sci.* **2010**, *22*, 533–558. [CrossRef]
67. Armienti, P.; Tripodo, A. Petrography and chemistry of lavas and comagmatic xenoliths of Mt. Rittmann, a volcano discovered during the IV Italian expedition in Northern Victoria Land (Antarctica). *Mem. Soc. Geol. Ital.* **1991**, *46*, 427–451.
68. Dunbar, N.W.; Zielinski, G.A.; Voisins, D.T. Tephra layers in the Siple Dome and Taylor Dome ice cores, Antarctica: Sources and correlations. *J. Geophys. Res.* **2003**, *108*, 2374. [CrossRef]
69. Dunbar, N.W.; Kurbatov, A.V. Tephrochronology of the Siple Dome ice core, West Antarctica: Correlations and sources. *Quat. Sci. Rev.* **2011**, *30*, 1602–1614. [CrossRef]
70. Narcisi, B.; Petit, J.R.; Chappellaz, J. A 70 ka record of explosive eruptions from the TALDICE ice core (Talos Dome, East Antarctic plateau). *J. Quat. Sci.* **2010**, *25*, 844–849. [CrossRef]
71. Sigl, M.; Fudge, T.J.; Winstrup, M.; Cole-Dai, J.; Ferris, D.; McConnell, J.R.; Taylor, K.C.; Welten, K.C.; Woodruff, T.E.; Adolphi, F.; et al. The WAIS Divide deep ice core WD2014 chronology—Part 2: Annual-layer counting (0–31 ka BP). *Clim. Past* **2016**, *12*, 769–786. [CrossRef]
72. Clark, P.U.; Dyke, A.S.; Shakun, J.D.; Carlson, A.E.; Clark, J.; Wohlfarth, B.; Mitrovica, J.X.; Hostetler, S.W.; McCabe, A.M. The Last Glacial Maximum. *Science* **2009**, *325*, 710–714. [CrossRef] [PubMed]
73. Domack, E.W.; Jacobson, E.A.; Shipp, S.; Anderson, J.B. Late Pleistocene–Holocene retreat of the West Antarctic Ice-Sheet system in the Ross Sea: Part 2—Sedimentologic and stratigraphic signature. *Geol. Soc. Am. Bull.* **1999**, *111*, 1517–1536. [CrossRef]
74. Bart, P.J.; Anderson, J.B.; Trincardi, F.; Shipp, S.S. Seismic data from the Northern Basin, Ross Sea, record extreme expansions of the East Antarctic ice sheet during the late Neogene. *Mar. Geol.* **2000**, *166*, 31–50. [CrossRef]
75. McKay, R.M.; Dunbar, G.B.; Naish, T.R.; Barrett, P.J.; Carter, L.; Harper, M. Retreat history of the Ross Ice Sheet (Shelf) since the Last Glacial Maximum from deep-basin sediment cores around Ross Island. *Palaeogeogr. Palaeoclim. Palaeoecol.* **2008**, *260*, 245–261. [CrossRef]
76. Cunningham, W.L.; Leventer, A.; Andrews, J.T.; Jennings, A.E.; Licht, K.J. Late Pleistocene-Holocene marine conditions in the Ross Sea, Antarctica: Evidence from the diatom record. *Holocene* **1999**, *9*, 129–139. [CrossRef]
77. Smith, J.A.; Graham, A.G.C.; Post, A.L.; Hillenbrand, C.D.; Bart, P.J.; Powell, R.D. The marine geological imprint of Antarctic ice shelves. *Nat. Commun.* **2019**, *10*, 5635. [CrossRef]
78. Melis, R.; Capotondi, L.; Torricella, F.; Ferretti, P.; Geniram, A.; Hong, J.K.; Kuhn, G.; Khim, B.-K.; Kim, S.; Malinverno, E.; et al. Last Glacial Maximum to Holocene paleoceanography of the northwestern Ross Sea inferred from sediment core geochemistry and micropaleontology at Hallett Ridge. *J. Micropalaeontol.* **2021**, *40*, 15–35. [CrossRef]
79. Mikis, A.; Hendry, K.R.; Pike, J.; Schmidt, D.N.; Edgar, K.M.; Peck, V.; Peeters, F.J.C.; Leng, M.J.; Meredith, M.P.; Todd, C.L.; et al. Temporal variability in foraminiferal morphology and geochemistry at the West Antarctic Peninsula: A sediment trap study. *Biogeosciences* **2019**, *16*, 3267–3282. [CrossRef]

80. Majewski, W.; Prothro, L.O.; Simkins, L.M.; Demianiuk, E.J.; Anderson, J.B. Foraminiferal Patterns in Deglacial Sediment in the Western Ross Sea, Antarctica: Life Near Grounding Lines. *Paleoceanogr. Paleoclimatol.* **2020**, *35*, 003716. [[CrossRef](#)]
81. Majewski, W.; Wellner, J.S.; Anderson, J.B. Environmental connotations of benthic foraminiferal assemblages from coastal West Antarctica. *Mar. Micropaleontol.* **2016**, *124*, 1–15. [[CrossRef](#)]
82. Bonaccorsi, R.; Quaia, T.; Burckle, L.H.; Anderson, R.F.; Melis, R.; Brambati, A. C-14 age control of pre- and post-LGM events using *N. pachyderma* preserved in deep-sea sediments (Ross Sea, Antarctica). In Proceedings of the 10th ISAES X, USGS, Santa Barbara, CA, USA, 26 September–1 October 2007.
83. WAIS Divide Project Members. Onset of deglacial warming in West Antarctica driven by local orbital forcing. *Nature* **2013**, *500*, 440–444. [[CrossRef](#)] [[PubMed](#)]
84. Jouzel, J.; Masson, V.; Cattani, O.; Falourd, S.; Stievenard, M.; Stenni, B.; Longinelli, A.; Johnsen, S.J.; Steffensen, J.P.; Petit, J.R.; et al. A new 27 ky high resolution East Antarctic climate record. *Geophys. Res. Lett.* **2001**, *28*, 3199–3202. [[CrossRef](#)]
85. EPICA Community Members. One-to-one coupling of glacial climate variability in Greenland and Antarctica. *Nature* **2006**, *444*, 195–198. [[CrossRef](#)]
86. Jouzel, J.; Masson-Delmotte, V.; Cattani, O.; Dreyfus, G.; Falourd, S.; Hoffmann, G.; Minster, B.; Nouet, J.; Barnola, J.M.; Chappellaz, J.; et al. Orbital and millennial Antarctic climate variability over the last 800,000 years. *Science* **2007**, *317*, 793–796. [[CrossRef](#)]
87. Stenni, B.; Buiron, D.; Frezzotti, M.; Albani, S.; Barbante, C.; Bard, E.; Barnola, J.M.; Baroni, M.; Baumgartner, M.; Bonazza, M.; et al. Expression of the bipolar see-saw in Antarctic climate records during the last deglaciation. *Nat. Geosci.* **2011**, *4*, 46–49. [[CrossRef](#)]
88. Bostock, H.; Barrows, T.; Carter, L.; Chase, Z.; Cortese, G.; Dunbar, G.; Ellwood, M.; Hayward, B.; Howard, W.; Neil, H.; et al. A review of the Australian–New Zealand sector of the Southern Ocean over the last 30 ka (Aus-INTIMATE project). *Quat. Sci. Rev.* **2013**, *74*, 35–57. [[CrossRef](#)]
89. Anderson, J.B.; Shipp, S.S.; Lowe, A.L.; Wellner, J.S.; Mosola, A.B. The Antarctic Ice Sheet during the Last Glacial Maximum and its subsequent retreat history: A review. *Quat. Sci. Rev.* **2002**, *21*, 49–70. [[CrossRef](#)]
90. Bentley, M.J.; Cofaigh, C.Ó.; Anderson, J.B.; Conway, H.; Davies, B.; Graham, A.G.C.; Hillebrand, C.D.; Hodgson, D.A.; Jamieson, S.S.R.; Larter, R.D.; et al. A community-based geological reconstruction of Antarctic Ice Sheet deglaciation since the Last Glacial Maximum. *Quat. Sci. Rev.* **2014**, *100*, 1–9. [[CrossRef](#)]
91. Yokoyama, Y.; Esat, T.M.; Thompson, W.G.; Thomas, A.L.; Webster, J.M.; Miyairi, Y.; Sawada, C.; Aze, T.; Matsuzaki, H.; Okuno, J.; et al. Rapid glaciation and a two-step sea level plunge into the Last Glacial Maximum. *Nature* **2018**, *559*, 603–607. [[CrossRef](#)] [[PubMed](#)]
92. Maas, S.M. Last Glacial Maximum—Holocene Glacial and Depositional History from Sediment 1049 Cores at Coulman High beneath the Ross Ice Shelf, Antarctica. Master’s Thesis, Victoria University of Wellington, Wellington, New Zealand, 2012; 114p.
93. Jorissen, F.J.; Fontanier, C.; Thomas, E. Paleooceanographical proxies based on deep-sea benthic foraminiferal assemblage characteristics. In *Proxies in Late Cenozoic. Paleooceanography, Developments in Marine Geology, 1*; Hillaire-Marcel, C., De Vernal, A., Eds.; Elsevier: Amsterdam, The Netherlands, 2007; pp. 263–325.
94. Melis, R.; Salvi, G. Late Quaternary foraminiferal assemblages from western Ross Sea (Antarctica) in relation to the main glacial and marine lithofacies. *Mar. Micropaleontol.* **2009**, *70*, 39–53. [[CrossRef](#)]
95. Baroni, C.; Orombelli, G. Abandoned penguin rookeries as Holocene paleoclimatic indicators in Antarctica. *Geology* **1994**, *22*, 23–26. [[CrossRef](#)]
96. Crosta, X.; Romero, O.; Armand, L.K.; Pichon, J.-J. The biogeography of major diatom taxa in Southern Ocean sediments: 2. Open ocean related species. *Palaeogeogr. Palaeoclim. Palaeoecol.* **2005**, *223*, 66–92. [[CrossRef](#)]