

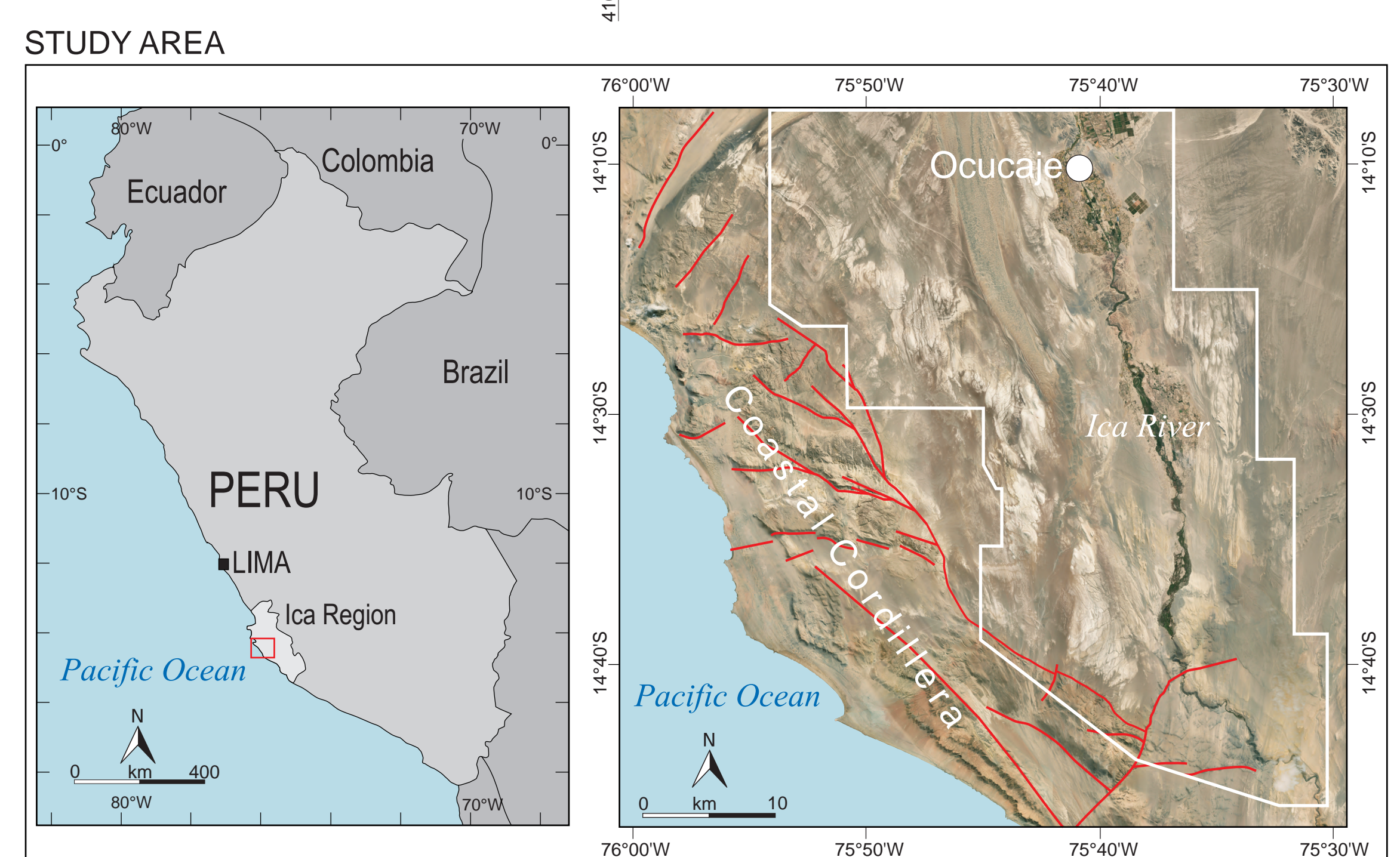
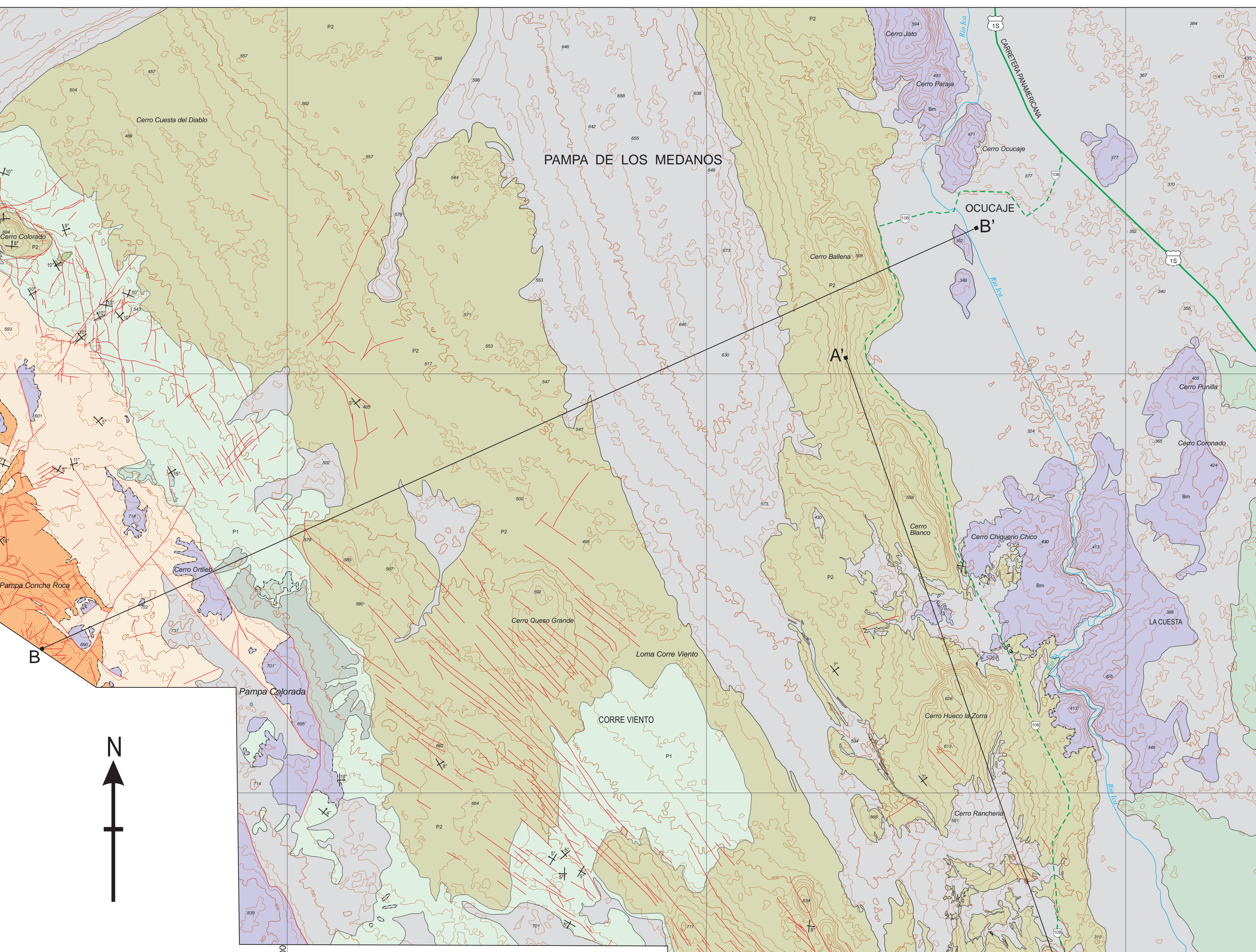
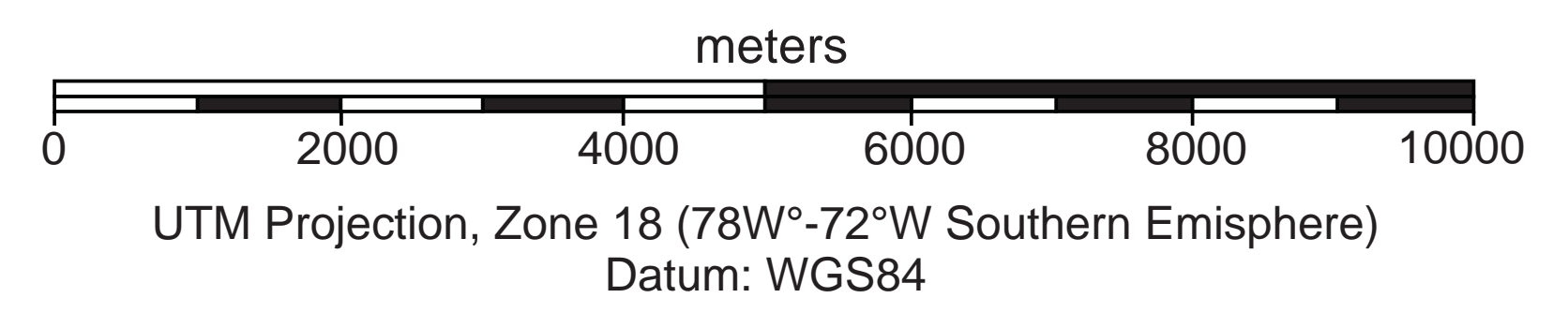
# Geology of the East Pisco Basin, Ica Desert, Peru

Di Celma C.<sup>(1)</sup>, Pierantoni P.P.<sup>(1)</sup>, Volatili T.<sup>(1)</sup>, Mollì G.<sup>(2)</sup>, Mazzoli S.<sup>(1)</sup>, Sarti G.<sup>(2)</sup>, Ciattoni S.<sup>(3)</sup>, Bosio G.<sup>(4)</sup>, Malinverno E.<sup>(4)</sup>, Collareta A.<sup>(2)</sup>, Gariboldi K.<sup>(2)</sup>, Giocada A.<sup>(2)</sup>, Jablonska, D.<sup>(1)</sup>, Landini W.<sup>(2)</sup>, Urbina M.<sup>(5)</sup>, Bianucci G.<sup>(2)</sup>

(1) Scuola di Scienze e Tecnologie, Università di Camerino, Camerino, Italy  
 (2) Dipartimento di Scienze della Terra, Università di Pisa, Pisa, Italy  
 (3) Scuola di Scienze Geologiche e Ambientali, Università degli Studi di Urbino, Urbino, Italy  
 (4) Dipartimento di Scienze dell'Ambiente e della Terra, Università di Milano-Bicocca, Milan, Italy  
 (5) Departamento de Paleontología de Vertebrados, Museo de Historia Natural-UNMSM, Lima, Peru



1:50,000 Scale at full printed size  
 Contour interval: 25 m



### LEGEND

**Quaternary surficial map units**

- Eolian sands, alluvial gravels, salar gypsum

**Cenozoic units**

- Unmapped exposures of Cenozoic sediments

**Pisco Formation (middle to upper Miocene)**

- P2: Tan to brown sandstones grading upwards into poorly defined beds of massive or finely laminated diatomites and diatomaceous siltstones with intermittent beds of sandstone, volcanic ash, and dolomite.
- PEO.2 unconformity
- P1: Tan to brown sandstones grading upwards into poorly defined beds of massive or finely laminated diatomites and diatomaceous siltstones with intermittent beds of sandstone, volcanic ash, and dolomite.
- PEO.1 unconformity
- P0: Tan to brown sandstones grading upwards into poorly defined beds of massive siltstones.
- PEO.0 unconformity

**Chilcatay Formation (lower Miocene)**

- CO2: Massive, intensely bioturbated, tan to brown sandstones changing upwards into massive siltstones. Interslated with these undeformed strata is a folded and chaotic interval displaying a range of slump-related soft sediment deformation structures (C2b).
- CE0.2 unconformity
- CO1: Basal boulder-bearing sandstones and conglomerates grading upwards into finely laminated siltstones, irregularly intercalated with sandstone and conglomerate beds, overlain by a coarse-grained wedge of mixed siliciclastic-carbonate diatomites (C1b).
- CE0 unconformity

**Otuma Formation (upper Eocene-Oligocene)**

- O: A concretionary, fine- to medium-grained sandstone package overlain by finely laminated siltstones interbedded with orange-weathering dolomite-cemented siltstone beds.
- OE0 unconformity

**Paracas Formation (middle to upper Eocene)**

- Pf: Basement-derived boulders in coarse-grained, mixed siliciclastic-bioclastic sandstones (the skeletal fraction is dominated by large benthic foraminifera of the family Lepidocyclusidae, bivalves, echinoids, and brachiopods), which grade upwards into tuffaceous and diatomaceous siltstones.
- PE0 unconformity

**Basement (pre-Cenozoic)**

- Bn: A complex mixture of magmatic and metamorphic rocks overlain by volcaniclastic rocks.

**Symbols**

- Strike and dip of bedding
- Fault
- Paired arrows along normal faults indicate direction of relative displacement
- Trace of geologic cross-section
- Main roads
- Secondary roads

